



Bansal Roofing Products Ltd.

Structuring Dreams from Steel

NSIC-CRISIL Rated Company, An ISO 9001-2015 Company

Registered Office : (Unit II) 274/2, Samlaya-sherpura Road, Village : Pratapnagar, Taluka: Savli. District : Vadodara-391520, Gujarat-India.
(L) : +91 99250 60542 (M) : +91 85111 48598 Email : cs@bansalroofing.com
CIN No. L25206GJ2008PLC053761, Website : www.bansalroofing.com

Date: 25th January, 2024

To,
The Manager,
Listing Department
BSE Limited
P. J. Towers, Dalal Street, Fort,
Mumbai - 400 001

Sub: Intimation of Credit Rating under Regulation 30 of SEBI (Listing obligation and Disclosure Requirements) Regulations, 2015

Scrip Code: 538546

Dear Sir/ Madam,

In Pursuant to Regulation 30 of the Securities and Exchange Board of India (Listing obligation and Disclosure Requirements) Regulations, 2015, and other applicable provisions of Listing Regulations, this is to inform that the company got itself graded under CRISIL SME Grading from CRISIL Limited. The grading indicates overall creditworthiness of an enterprise arrived at by analyzing its operating performance and financial strength.

The company received its grading report from the credit rating agency on 25th January, 2024, the details of which is as under:

Credit Rating Agency	Grading	Valid Till	Change from previously assigned Grading
CRISIL LIMITED	SME 1	3 rd January, 2025	No Change

The detailed Grading Report is available on the website of the Company at www.bansalroofing.com.

We request you to kindly take the above information on record.

Thanking You,
For, Bansal Roofing Products Limited



Kaushalkumar S Gupta
Chairman & Managing Director.
DIN: 02140767

Factory : (Unit-I) Plot No.6, Raj Industrial Estate, Jarod-Samlaya Road, Village: Vadadala (Devpura), Taluka : Savli,
Dist. Vadodara, Gujarat, India. Pin 391 520. Ph. : 63523 82760

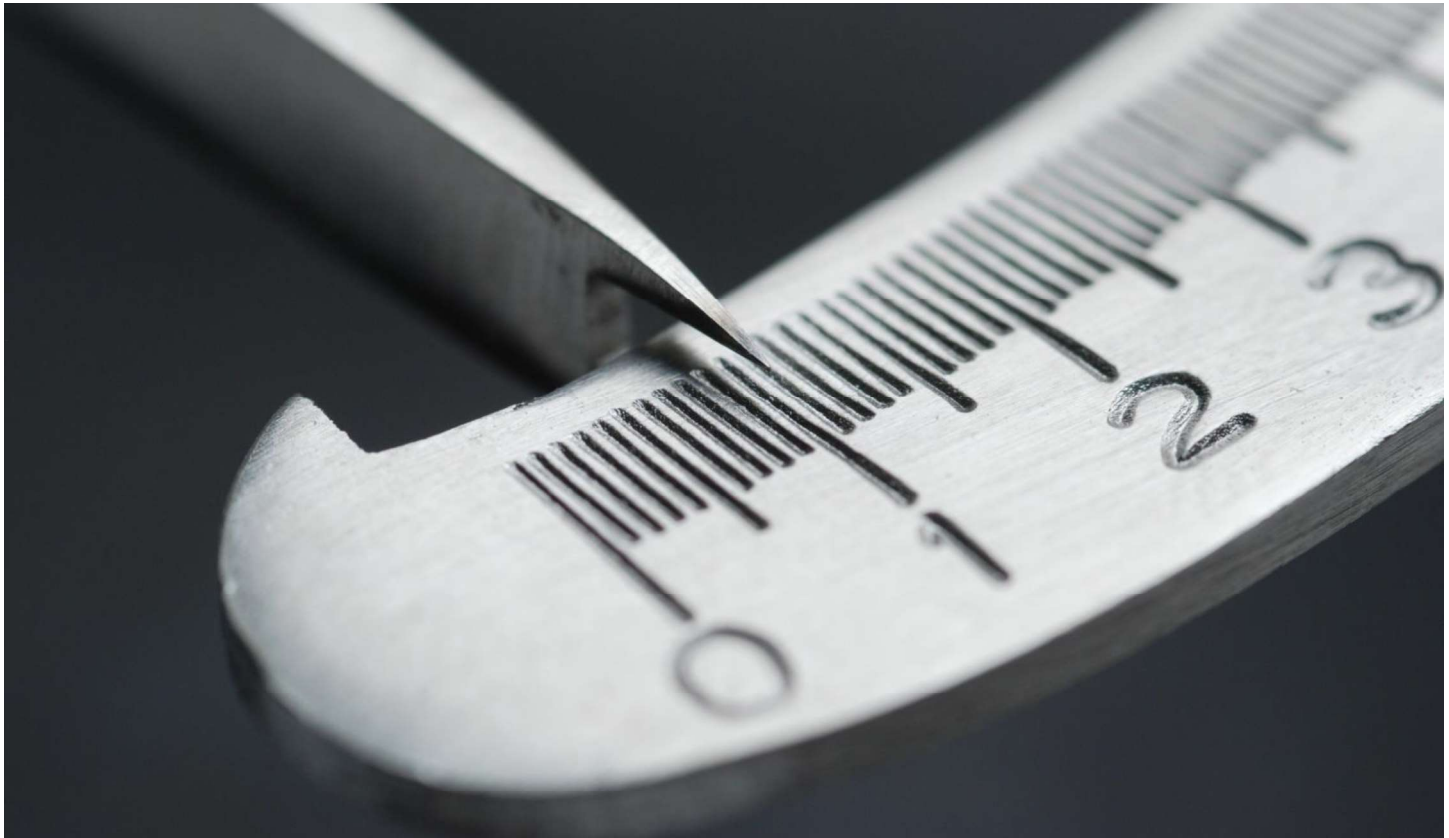
Marketing Office : 1, Bansal House, Kapurai Chokdi, Near Highway (Over Bridge), Dabhoi Road,
Vadodara-390004. Gujarat, India. Ph. : 72260 00587

Bansal Roofing Products Limited

**CRISIL Grading: CRISIL SME 1
'Highest'**

Indicates the level of creditworthiness in relation to other Micro & Small Enterprises

Report Date: January 05, 2024 / **Valid Till:** January 03, 2025



CRISIL SME Grading

SME 1 indicates 'Highest' creditworthiness in relation to other SMEs	CRISIL SME Grading	Definition
	SME 1	Highest
	SME 2	High
	SME 3	Good
	SME 4	Above Average
	SME 5	Average
	SME 6	Below Average
	SME 7	Weak
	SME 8	Poor

SME grading history

Grading	Assigned on	Valid till	Grading acceptance	Remarks
SME 1	January 5, 2023	January 4, 2024	Grading accepted	Renewal

Grading history

Grading	Financial Strength	Operating Strength	Assigned on	Valid till	Grading acceptance	Remarks
MSE 1	Highest	High	January 5, 2022	January 4, 2023	Grading accepted	Renewal
MSE1			January 5, 2021	January 4, 2022		
MSE 1			December 18, 2019	December 16, 2020		
MSE 2			December 18, 2018	December 17, 2019		
MSE 2			December 18, 2017	December 17, 2018		
MSE 2			December 18, 2016	December 17, 2017		
SE 2B			December 18, 2015	December 17, 2016		
SE 2B			December 18, 2014	December 17, 2015		
SE 2B			December 28, 2013	December 27, 2014		