



Maps | APIs | Navigation | Tracking | GIS

January 28, 2022

The Listing Department
BSE Limited
Phiroze Jeejeebhoy Towers
Dalal Street
Mumbai 400 001
BSE SCRIIP Code: 543425

The Listing Department
National Stock Exchange of India Limited
Exchange Plaza
Bandra Kurla Complex, Bandra (East)
Mumbai 400 051
NSE Symbol: MAPMYINDIA

Subject: Addendum to Investor Presentation submitted on January 27, 2022 for Q3 & 9M FY2022 Results.

Ref.: Regulation 30 of SEBI (Listing Obligations and Disclosure Requirements) Regulations, 2015

Dear Madam / Sir,

Please find attached herewith amended Investor Presentation for Q3 & 9M FY2022 Results.

Kindly acknowledge the receipt of the same.

Thanking you.

Yours faithfully,
For C.E. Info Systems Limited

Saurabh Surendra Somani
Company Secretary & Compliance Officer



Encl:

1. Investor Presentation

C.E. INFO SYSTEMS LIMITED

(Previously Known as C.E. Info Systems Pvt Ltd)

237, Okhla Industrial Estate, Phase - III, New Delhi 110020, Digital Address: eloc.me/mmi000, Email: contact@mapmyindia.com,
Website: www.mapmyindia.com, Phone: +91-11-4600 9900, CIN : L74899DL1995PLC065551, A CMMI & ISO 9001:2008 Certified Company

MapmyIndia

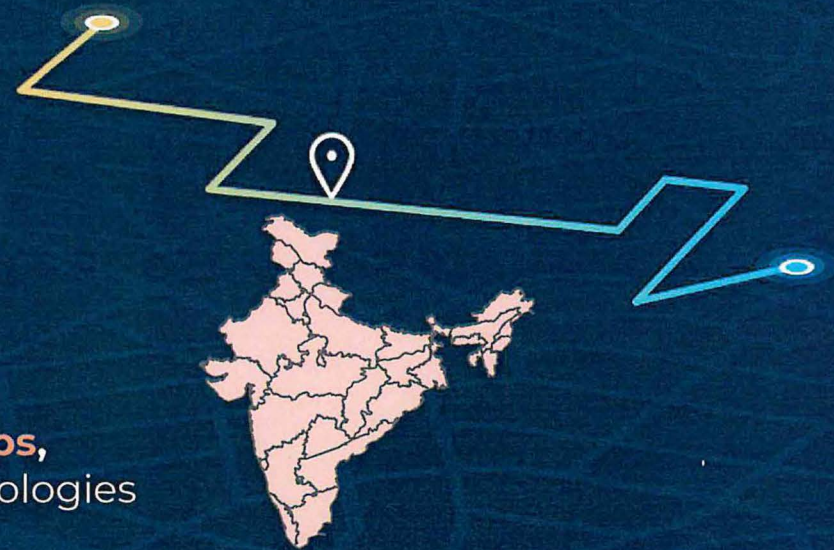
Quarterly Earnings Call Investor Presentation January 27th 2022

C.E. Info Systems Limited

MapmyIndia

India's leading provider of **advanced digital maps**,
geospatial software & **location-based IoT** technologies

B2B and B2B2C market leader for maps and geospatial
products in India with a comprehensive suite of
SaaS, PaaS and MaaS offerings



MAPPLS

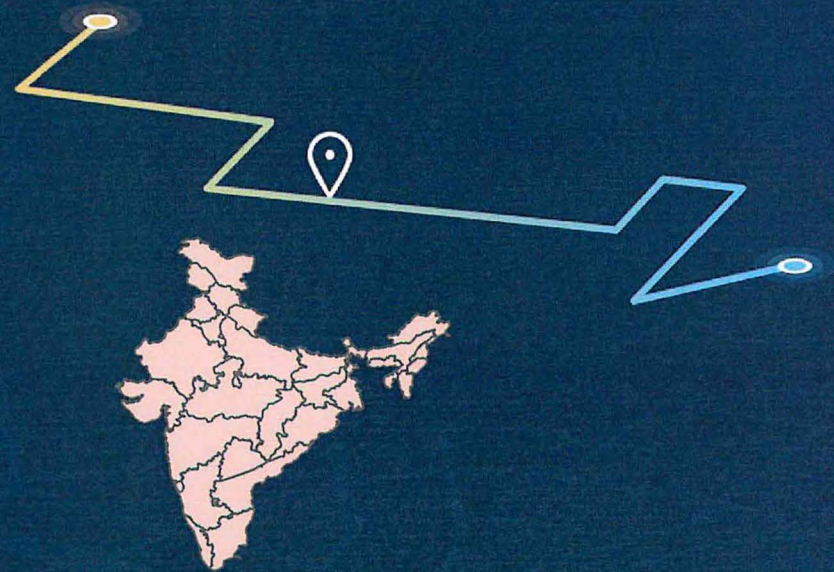
Presentation Overview

Business Overview

Strengths & Strategy

Q3 and 9M FY2022 Update

Operational Highlights



Pioneering Vision & Mission Led by a Technocrat Founding Team MapmyIndia



26 years ago ...

...we envisioned that some day a significant percentage of all data would have a location dimension to it, and that such data would be critical in solving myriad problems faced by businesses, government and consumers

Leadership Team



Rakesh Verma

Chairman and Managing Director

35+ Years of Experience

Co-founded the company in 1995
B E (Hons.), Mechanical Engineering
BITS, Pilani (1972)
MBA, Eastern Washington
University, USA (1979)



Rashmi Verma

Co-founder and CTO

34+ Years of Experience

B Tech, Chemical Engineering
IIT, Roorkee (1977)
MSc
Eastern Washington University, USA (1979)



Rohan Verma

Whole-time Director and CEO

14+ Years of Experience

B Tech, Electrical Engineering
Stanford University, USA (2007)
MBA
London Business School (2015)

A comprehensive suite of maps and geospatial technology products and platforms, for India and the world

MapmyIndia

MaaS ("Maps as a Service"), SaaS ("Software as a Service") and PaaS ("Platform as a Service") offerings



**Digital Map &
Geospatial Data**
Products



**Map, Location &
Navigation**
Products &
Platforms



**Developer APIs &
SDKs**



**Location-Powered
Consumer Tech &
Enterprise Digital
Transformation**
Solution Suite



**GIS, Geospatial
Analytics & Geo-AI**
Products & Platforms



**Location-based IoT,
Fleet & Workforce
Automation**
Products & Platforms



**Consumer location-
based apps & IoT
gadgets**



**N-CASE Automotive
& Mobility**
Tech Solutions Suite

... for the India market, under
our brand, MapmyIndia

MapmyIndia

... and for the world market,
under our brand, Mappls



MAPPLS

Integrated maps of 200+ countries

MAPPLS

| Business Model and Customer Segments

MapmyIndia

Leading enterprises are powered by
MapmyIndia technologies

Automotive

Hyundai

MG Motor

Consumer Tech

PhonePe

Flipkart

Yulu

BFSI

HDFC Bank

Government

Goods and
Services Tax
Network

Mobility

AVIS
SafeXpress

Telecom

Airtel



Target **B2B** and **B2B2C** enterprise customers including **new-age tech companies, automotive OEMs, businesses** across industry verticals, **government** organisations, app **developers** and **consumers**.



500+ customers on SaaS, PaaS and MaaS platforms¹



Serviced **2,000+** enterprise customers since inception¹



Long-term mutually renewable contracts of 3 to 5 years, providing continued synergy and revenue predictability



Products, platforms, APIs as well as end-to-end customized solutions for wide variety of use case

Key Highlights of Business Model

Charge fees per period based on per vehicle, per asset, per transaction, per use case, and / or per user, as applicable

Subscription fees, Royalties and Annuities primarily form company's revenue from operations

Note: 1) As on 31st March 2021

Ever expanding use cases; Continuous innovation to address technology paradigm shifts

MapmyIndia



AUTOMOTIVE

- In-built Navigation devices
- Connected Vehicles
- Shared & EV Mobility



ECOMMERCE

- Long haul first mile
- Last mile delivery tracking



FOOD DELIVERY

- Address intelligence
- Last mile delivery tracking



TRANSPORTATION AND LOGISTICS

- Fleet and asset tracking
- Transportation data
- Truck routing solutions



BFSI

- Geo-verification and on-boarding
- Usage-based auto insurance
- Geo-CRM for sales



RETAIL AND QSR

- Location enabled online e-commerce
- Location-based digital advertising



TELECOM AND UTILITIES

- Field force monitoring
- Optical fiber mapping and distribution analytics



HEALTHCARE AND PHARMA

- Distribution and logistics of medical goods
- Mapping of plants



GOVERNMENT

- Geo-tagging of public assets for repair and overhaul



RAILWAYS AND WATERWAYS

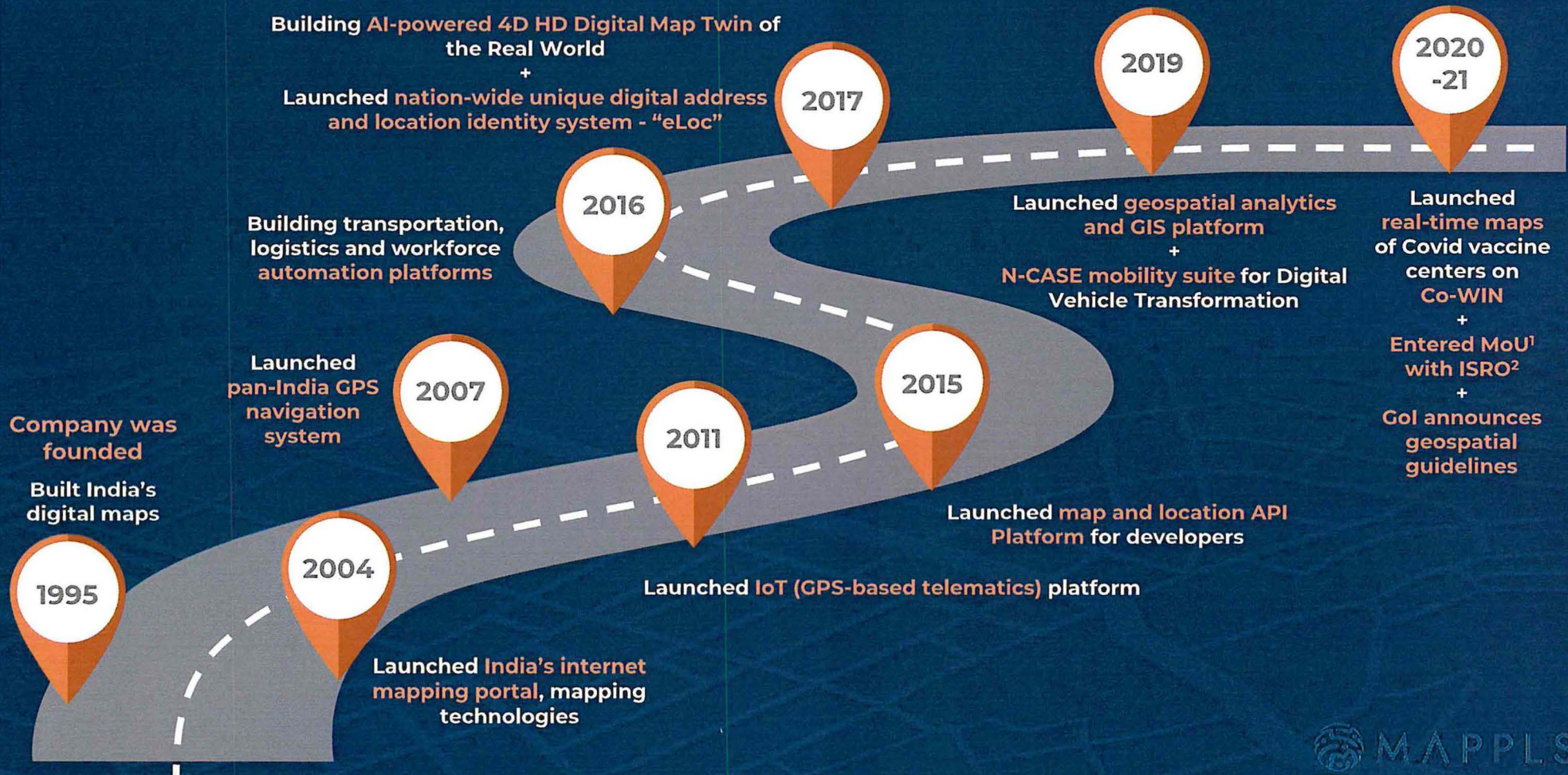
- Network and route mapping
- Tracking of fleet

Retail Customers and Users: Provide our maps and technologies to consumers through our MapmyIndia Move App, Maps.MapmyIndia.com internet mapping portal and our MapmyIndia Move GPS-based IoT gadgets



| Our Innovation Led Journey so far...

MapmyIndia



MAPPLS

MaaS Map data products created & continuously updated and enhanced through cutting-edge technologies

MapmyIndia

AI-powered 4D, HD Digital Map Twin of the Real World

Map Data Product Coverage Highlights:



6.29 mn kms of roads³
98.5% of India's road network^{2,3}



7,933 towns³
6,37,472 villages³



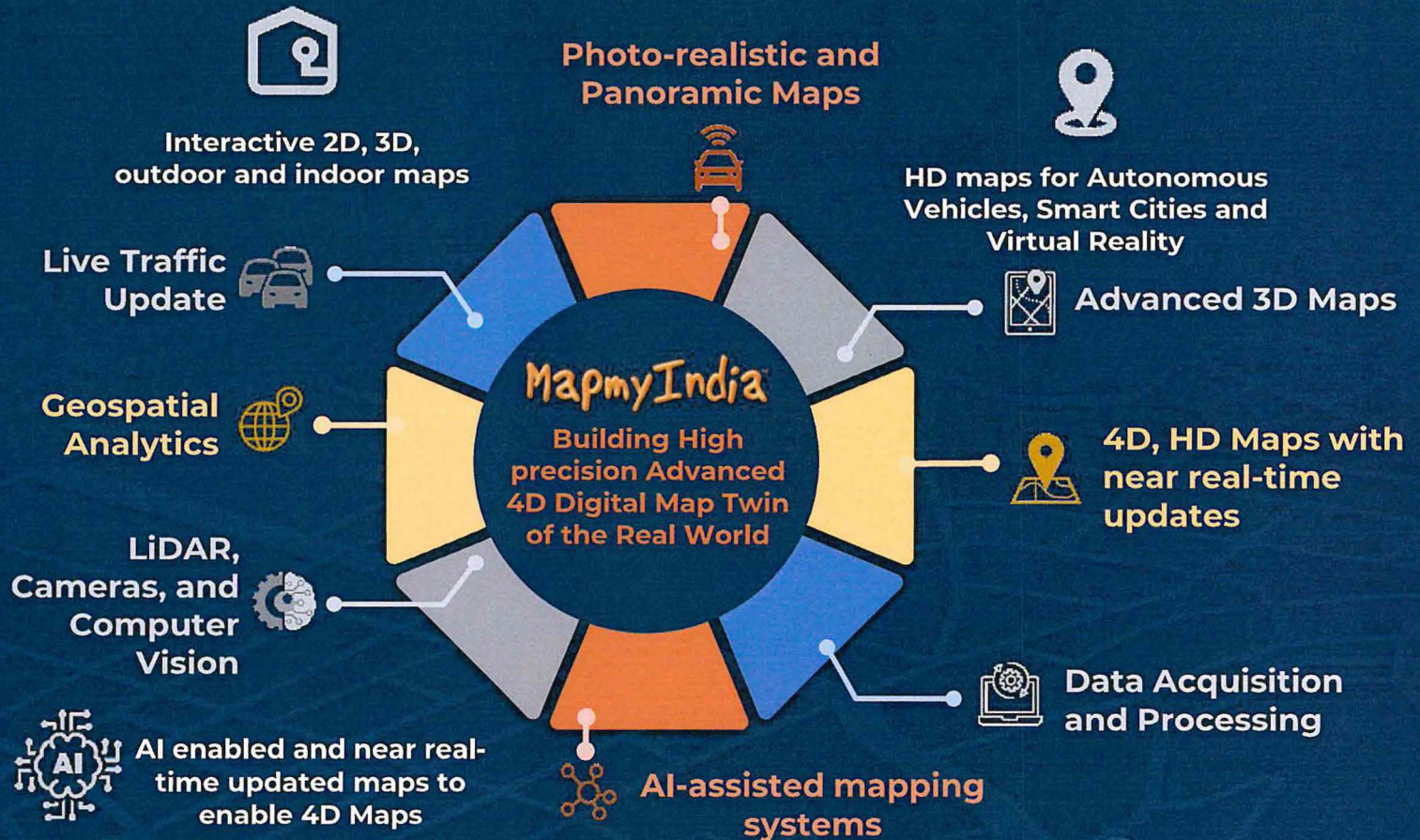
17.79 mn places of interest^{3,4}
14.51 mn house or building addresses³



400+ mn geo referenced photos, videos & 360° panoramas



Value added location analytics datasets

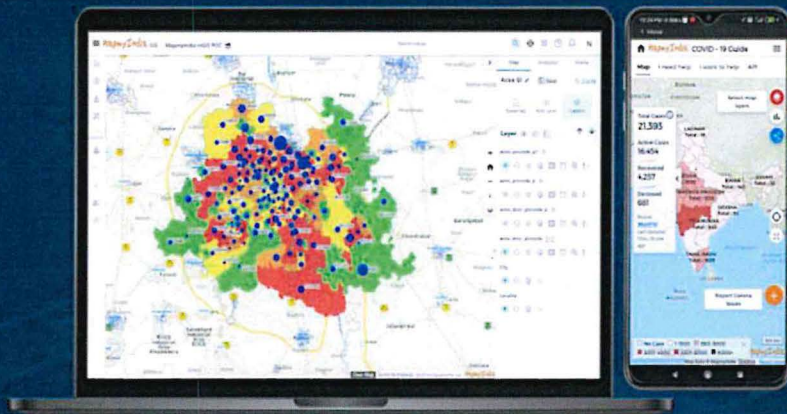


MAPPLS

SaaS products for Geospatial Analytics, GIS, IoT, Fleet Management, Workforce Automation & N-CASE Mobility

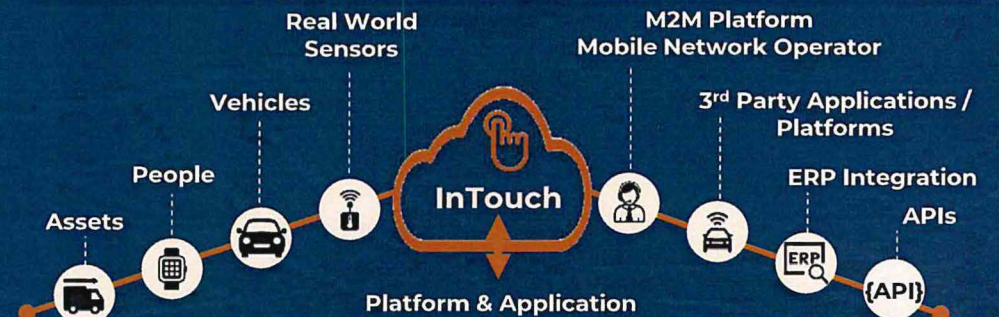
MapmyIndia

mGIS (Geospatial analytics, Geospatial Information Systems, AI & visualization, Mapping as a Service)



Localized, highly focused and updated map data

InTouch (IoT, Fleet Management, Logistics Optimisation) and WorkMate (Workforce & Workflow Management)



“Workmate” App - Enable organizations to get real-time visibility and live location tracking for workforce and workflow management, monitoring and automation capabilities

N-CASE
Mobility
Suite



Navigation
Assistant



Connected
vehicle &
telematics
platform



Autonomous
safety
platform
(ADAS)



Shared
mobility
platform



EV mobility
platform

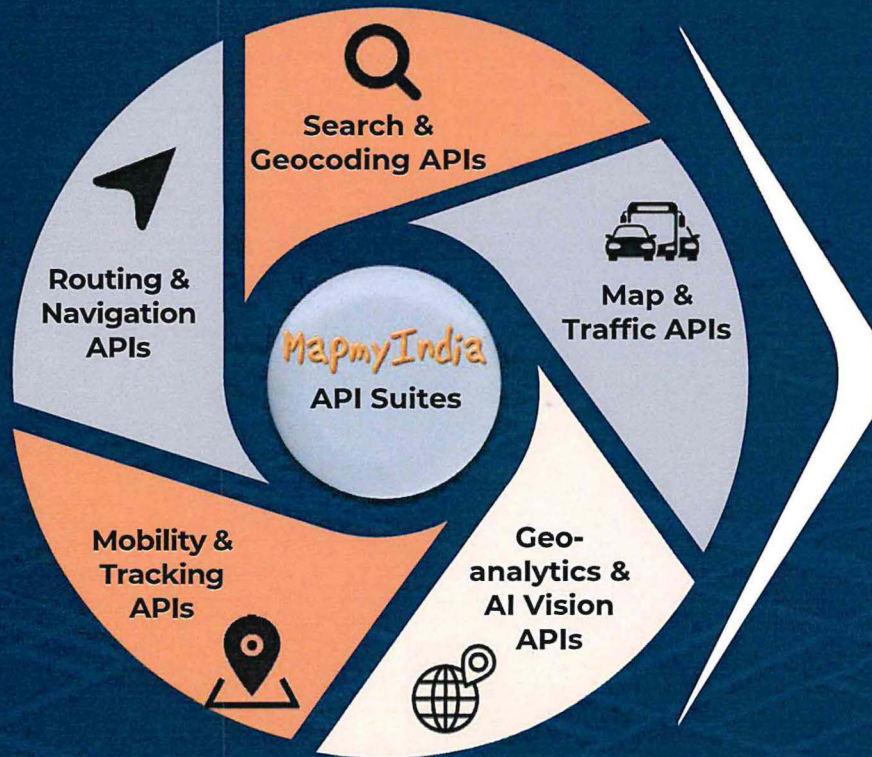
Provide solutions through cloud, hybrid and in-premise deployments


MAPPLS

PaaS (Platform as a Service) APIs to enable developer innovation and flexibility of creating products & solutions


MapmyIndia

Large catalogue of developer APIs and SDKs





Response Time
Faster response times than ever



Versioning & Docs
Standardized versioning with backward compatibility


Scalable
Auto-scalable architecture to support many request


Versatile
Highly configurable to suit use cases


Security & Monitoring
Oauth 2.0 based / VA / PT certified


Accurate
Location Bias most relevant than ever


Natural Language
Searches for what the user is trying to say


Developer Friendly
Easy integration and standard response code

Integrated maps of 200+ countries



To offer global solutions to customers

MAPPLS

Network effect continuously enhances our MaaS, SaaS & PaaS

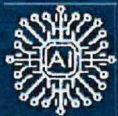
MapmyIndia



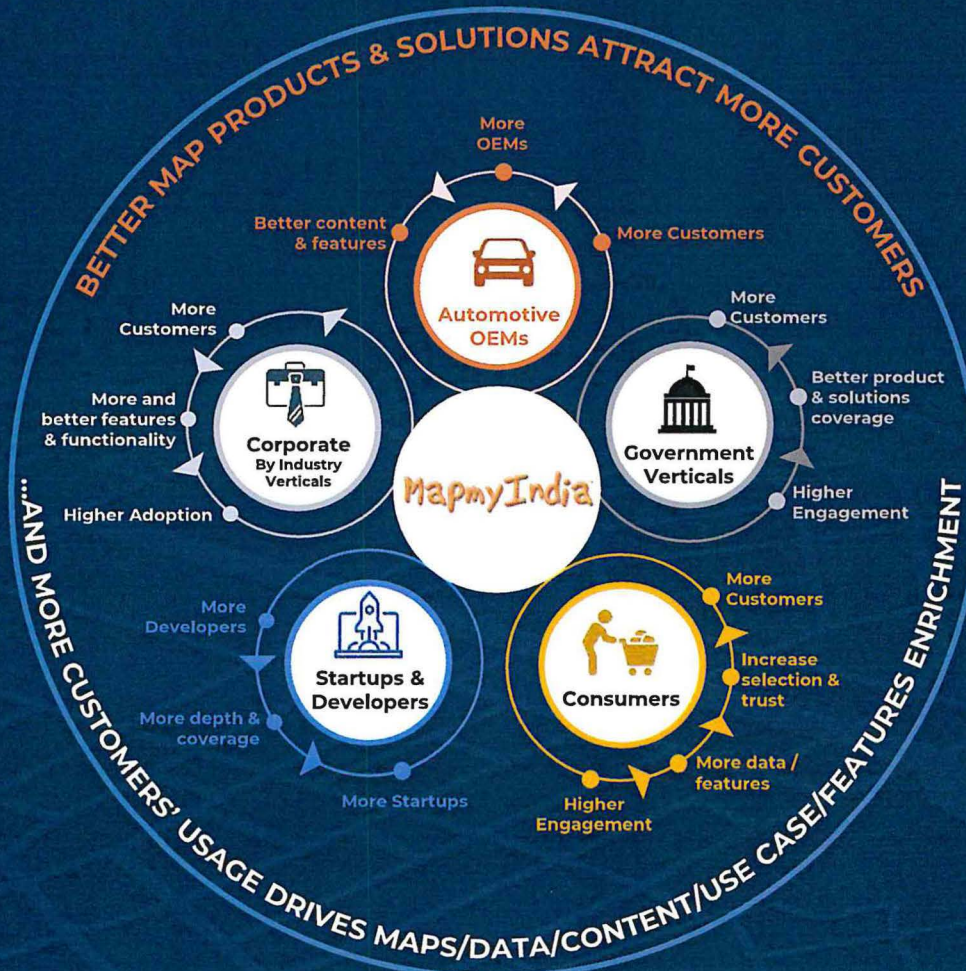
Highly differentiated, unique digital asset that is difficult to replicate



Comprehensive 4D HD digital map database created for India through professional field surveys, collection and compilation of geographical data



Proprietary end-to-end technology-driven and AI-assisted mapping systems



Integration of our digital maps with our internet-connected platforms



Increasing usage of products by customers, creates a network (flywheel) effect



Continuously increasing the value proposition of our offerings and help grow our business

MAPPLS

Technocrat Founding team supported by an experienced professional management team

MapmyIndia



Rakesh Verma

Co-founder and CMD

47+ Years of Experience

B E (Hons.), Mechanical Engineering
BITS, Pilani
MBA
Eastern Washington University, USA



Rashmi Verma

Co-founder and CTO

40+ Years of Experience

B Tech, Chemical Engineering
IIT, Roorkee
MSc
Eastern Washington University, USA



Rohan Verma

Whole-time Director and CEO

17+ Years of Experience

B Tech, Electrical Engineering
Stanford University, USA
MBA
London Business School



Sapna Ahuja

Chief Operating Officer

17+ Years with MapmyIndia
BSc, Computer Science
(Delhi University)
MSc, Applied Operations Research
(Delhi University)



Anuj Jain

Chief Financial Officer

10+ Years with MapmyIndia
B Com, University of Rajasthan
Chartered Accountant (CA)
Company Secretary (CS)
Cost and Management Accountant (CMA)



Ankeet Bhat

Chief Strategy Officer

11+ Years with MapmyIndia
B Tech, Electronics and instrumentation
(Hons),
BITS Pilani



Nikhil Kumar

President - Geospatial

Total Experience of 24+ Years
MSc (Electronics), Kurukshetra University
Previously worked with:
Here Technologies, Trimble, ESRI

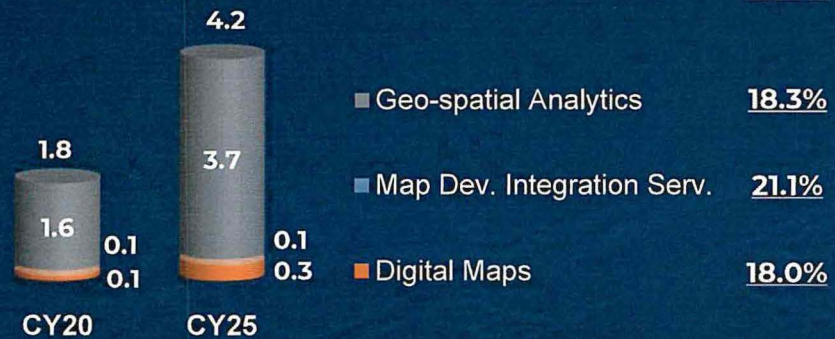
MAPPLS

Growing addressable market in India with industry tailwinds driving growth outlook

MapmyIndia

Indian Digital Map Services Market¹

(USD bn)



Indian Mobility Navigations Solutions and Telematics Market¹

(USD bn)



Total on-road vehicles in India in 2020¹

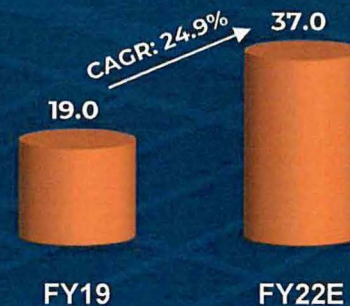
230 mn Two-wheelers

40 mn Passenger Vehicles

9.5 mn Commercial Vehicles

App Downloads in India^{1,2}

(in bn)



Digital services market in India¹

USD 52 bn (INR 3.8 tn)

Digital services market by 2025

CAGR (19-25)

12.2%
Digital Services

vs

3.1%
Legacy Services

Source: 1) F&S Report commissioned and paid for by the company, 2) IBEF, App Annie; 3) Datareportal

Government Initiatives: Macro-Economic Enablers for digital maps and location intelligence

MapmyIndia



Liberalization of Geospatial Sector & Restrictions on Foreign Entities



GPS-based toll collection method



Automotive Industry Standard 140 ("AIS 140")²



Digital India Land Records Modernization Programme³



Plans to make **ADAS compulsory in all cars by 2022**



Geotagging of Companies⁴



Telematics in Insurance⁵



Drone Rules, 2021 - Liberalized and simplified drone regulations⁶



Allowed "Beyond Visual Line of Sight" flight testing of drones⁷



Digital India Initiatives

Source: 1) F&S Report commissioned and paid for by the company; Note: 2) All State public transport vehicles need a vehicle tracking system, a camera surveillance system and emergency SOS panic button; 3) Digitize the existing land records and develop an Integrated Land Information Management System; 4) Requires all registered companies to file particulars about the registered offices in E-form ACTIVE; 5) IRDAI has proposed the adoption of Telematics in motor insurance; 6) development of a drone corridor would be facilitated by the Ministry for transportation of goods by drones; 7) With latest UAV(unmanned air vehicles) /UAS (unmanned aero systems) laws, Nano drones in India can start flying legally

Our Strengths

MapmyIndia

#1



B2B and B2B2C market leader for maps and geospatial products in India with a comprehensive suite of offerings¹

#2



Ever expanding use cases; Innovating to address technology paradigm shifts

#3



Large addressable market in India with industry tailwinds driving growth outlook

#4



Government Initiatives: Macro-Economic Enablers for digital maps and location intelligence

#5



Independent, global geospatial products and platforms company

#6



Proprietary technology and network effect -> **Strong entry barriers**

#7



Marquee customers across sectors with capability to **up-sell** and **cross-sell**

#8



Increasing new orders; profitable and cash generating business model with consistent financial track record

#9

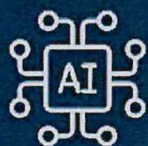


Founding team supported by an experienced **professional management team**

Source: 1) F&S Report commissioned and paid for by the company

Future Strategy

MapmyIndia



Augment products, platforms and technology lead

- ▶ Invest to further develop innovation and technological capabilities
- ▶ Build a deeper and broader stack of software products



Continue to scale and expand our customer reach leveraging market presence in India

- ▶ Expansion of relationships with existing active customers
- ▶ Leverage first-mover advantage with the GoI's increasing traction



Drive expansion in international markets and geospatial sector

- ▶ Target international markets with 'Mappls'
- ▶ Use integrated maps of 200+ countries



Pursue selective strategic acquisitions and investments to grow business

- ▶ Acquired Vidteq Private Limited in FY18
- ▶ Intend to continue pursuing selective strategic acquisitions to enter into new business segments and geographies



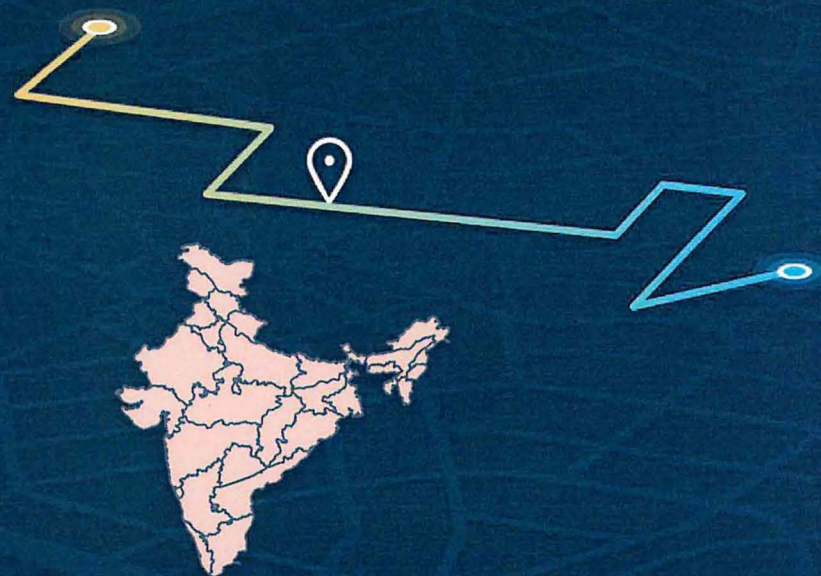
Attract, develop and retain skilled employees to sustain the product quality and customer experience

- ▶ Expand R&D efforts by recruiting more technical employees
- ▶ Formulated ESOP scheme for employees

Quarterly Earnings Call
Investor Presentation
January 27th 2022

C.E. Info Systems Limited
MapmyIndia

Q3 and 9M FY2022 Updates & Highlights



| Listed in Indian Public Markets on Dec 21, 2021

MapmyIndia

Humbled by the public market response to our IPO, subscribed 155 times

IPO Offer price at INR 5500 Crore valuation, opened with 53% gains, and became India's first geospatial unicorn



| Q3 and 9M FY2022 Management Commentary

MapmyIndia

Commenting on the Q3 and 9M FY22 results, Rakesh Verma, Chairman & Managing Director, MapmyIndia, said

"Last quarter was special to us due to the stellar response we received to our IPO being subscribed 155 times. We gratefully welcome more than 1.3 lakh shareholders into our company.

During the last quarter, Q3, and for the first nine months, 9M, of FY2022, we continued to manage and calibrate the company in a fiscally prudent manner, focusing on profitable growth over the course of the year, while relentlessly innovating on our technologies, products and platforms and focusing on expanding our reach to customers.

The momentum for our products and platforms is strong and this will further cement our leadership position in the digital mapping and geospatial space."

Key Consolidated Financial Highlights for Q3 and 9M FY2022

MapmyIndia

1) Q3 PAT margins were 36% on Total Income of Rs 52.1 Crores and Revenue from Operations of Rs 43.4 Crores.

2) Growth on 9M YoY basis i.e., for the period of 9M FY2022 vs 9M FY2021:

- **Revenue from Operations up 37%** to Rs 143.4 Crores from Rs 105 Crores
- **EBITDA up 87%** to Rs 62.7 Crores from Rs 33.6 Crores
- **PAT up 60%** to Rs 65.2 Crores from Rs 40.7 Crores

3) Margin Expansion on 9M YoY basis i.e., for the period of 9M FY2022 vs 9M FY2021:

- **EBITDA Margins expanded to 44%** from 32%
- **PAT Margins expanded to 37%** from 30%

Key Consolidated Financial Highlights for Q3 and 9M FY2022

MapmyIndia

Particulars	Q3 FY22	9M FY22	9M FY21	% Growth (9M YoY)	FY21
Total Income (Rs Cr)	52.1	174.2	136.3	28%	192.3
Revenue from Operations (Rs Cr)	43.4	143.4	105.0	37%	152.5
EBITDA (Rs Cr)	16.7	62.7	33.6	87%	52.8
EBITDA Margin (%)	39%	44%	32%		35%
PAT (Rs Cr)	18.5	65.2	40.7	60%	59.8
PAT Margin (%)	36%	37%	30%		31%
Cash and Cash Equivalents at end of period (Rs Cr)	389.6	389.6	302.0	29%	336.2

Quarterly Movement Understanding

MapmyIndia

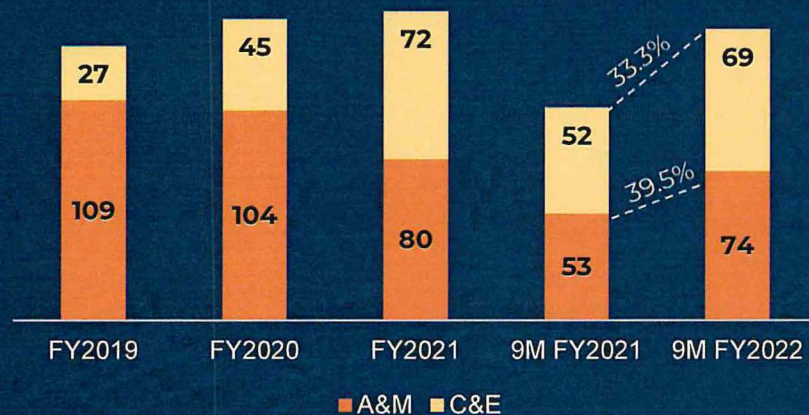
Q3 FY 2022 revenue was down in comparison to Q2 FY2022 (previous quarter) and Q3 FY 2021 (same quarter, previous year). This is attributed to:

- 1) Sales of automotive OEMs were impacted due to semiconductor shortage, which in turn impacted us.
- 2) Additionally, comparative quarters of Q2 FY2022 (previous quarter), and Q3 FY2021 (same quarter, previous year) had benefitted from post-covid recovery pent-up demand.
- 3) As supply chains recover, quarterly revenues will get normalised and covered up. We are seeing that happen in this quarter. Also, more new vehicle models pre-installed with MapmyIndia Maps and technologies are going live this quarter, further helping growth in the time to come.
- 4) Also, some B2B and B2B2C contracts that we get are milestone-based wherein revenue gets recognised at specified time frames. This makes some quarterly revenue numbers lumpy, in a positive or negative manner. **The right way to look at MapmyIndia's business and compare periods is on a Year-to-Date (YTD) Year-on-Year (YoY) basis and not on quarterly basis i.e on 9M FY 2022 vs 9M FY 2021 numbers.**

Segmental Revenue

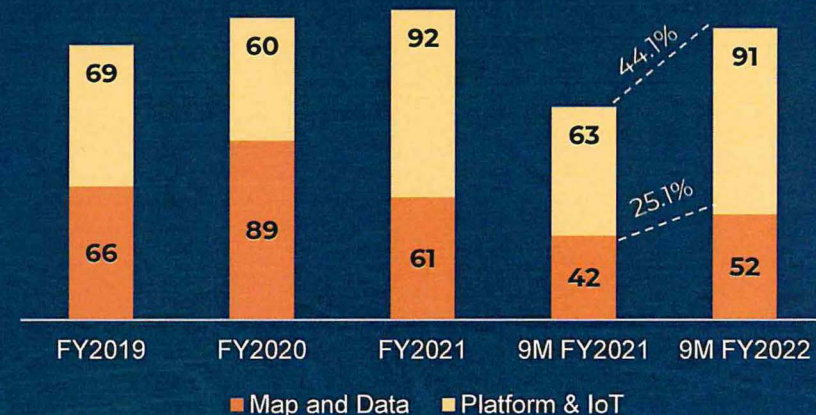
MapmyIndia

Market Segment (In ₹ Crores)



- A&M revenue has grown 39.5% on a YTD YoY basis. Thus, revenue from A&M which had been falling in previous years, has nicely turned around this year.
- Also, A&M revenue for Q3FY22 has grown in comparison to quarterly run-rate of H1FY22, despite the automotive industry facing a semiconductor shortage. In absence of semiconductor shortage, A&M revenue in Q3FY22 could have been even higher.
- C&E revenue is up 33.3% on YTD YoY basis too.

Product Segment (In ₹ Crores)



- Revenue from Platform & IoT is up by 44.1% on a YTD YoY basis, and even Q3FY22 has grown in comparison to quarterly run-rate of H1FY22. This indicates our map-powered SaaS and PaaS business continues to grow well.
- Some of our map & data contracts in the C&E market segment are milestone based wherein revenue gets recognized at specified time frames and hence may be lumpy across quarters.
- Yet, Revenue from Map & Data is up 25.1% on YTD YoY basis as well.

Note: 1) C&E : Consumer tech and enterprise digital transformation; A&M : Automotive and mobility tech;

2) Platform & IoT Revenue represents our SaaS (Software as a Service) and PaaS (Platform as a Service) which leverage and add value on top of our MaaS (Map as a Service).

Q3 and 9M FY2022 Management Commentary (contd.)



Rohan Verma, CEO & Executive Director, MapmyIndia, said

"The future is looking more exciting than ever before, and we are very confident and optimistic about our company's short- and long- term future. As we near the anniversary of the Government of India's historic geospatial sector reforms that were announced on 15th February 2021, we express our gratitude to the government for enabling an Aatmanirbhar Bharat in this sector of national strategic importance, and for encouraging Indian companies in this space through their policies and initiatives.

Our talented team continues to innovate world-class maps and technologies and execute on the business with focus and energy. During this last quarter, we welcomed multiple marquee customers across industry verticals, and we thank them as well as our existing customers who continue to trust MapmyIndia's ability to deliver best-in-class solutions and benefits. We are also evaluating and pursuing exciting inorganic opportunities that will help us expand further in the IoT and logistics tech space, as well as in the automotive and augmented reality metaverse tech space."

| Some Customer Wins & Use Case Expansion

MapmyIndia

Automotive & Mobility Tech:

- European 4-Wheeler OEM went live with MapmyIndia for in-vehicle navigation
- Two 2-Wheeler OEMs rolling out with MapmyIndia to power their connected vehicles and turn-by-turn navigation
- EV infrastructure and mobility solutions company started to adopt MapmyIndia for monitoring location and other parameters for their Evs
- EV Commercial Vehicle OEM went live with MapmyIndia for battery pack monitoring
- MapmyIndia Shared Mobility platform adopted by leading taxi company
- Ministry of Road Transport & Highways signed MoU with MapmyIndia for integrating information of accident-prone road stretches and promoting MapmyIndia's app, that gives real-time ADAS safety alerts to drivers during navigation, to users across India

 MAPPLS

| Some Customer Wins & Use Case Expansion

MapmyIndia

Consumer Tech & Enterprise Digital Transformation:

- Fin-tech super app went live with MapmyIndia to power consumer-facing mapping services, and for location-enhanced digital transformation
- QSR company adopted MapmyIndia for evaluating and selecting restaurant sites based on MapmyIndia's geospatial data and analytics platform
- Consumer durables brand adopted MapmyIndia for field workforce management
- Government health agency selected MapmyIndia to power GIS (geospatial information systems) and location-based services for India's health services
- Key initial customers for MapmyIndia's Metaverse and Drone 3D map solutions, opening up futuristic use cases for MapmyIndia capabilities.

| Some Product & Platform Updates

MapmyIndia

Digital Map & Data (“Map as a Service” or “MaaS”)

- MapmyIndia’s digital map data product, created professionally using cutting-edge survey and mapping technologies since last 25 years, gives highly accurate and reliable data for 6.6 million road kilometers, all 7.5 lakh villages and 8000+ towns, and more than 3.1 crore places and addresses
- Not just 2D maps, but MapmyIndia offers highly accurate and precise 3D, 4D, HD and information-rich hyper local maps: AI-powered Digital Map Twin of the Real World
- Using drones to capture and offer high-res 3D photo-real data across multiple cities
- Using vehicle-mounted cameras and sensors to create and offer sub-metre, highly accurate, high-definition maps for roads and 360-degree RealView across cities

| Some Product & Platform Updates

MapmyIndia

Digital Map & Data (“Map as a Service” or “MaaS”)

NOTE: Geospatial guidelines released by Government of India on February 15th 2021, liberalizes all survey and mapping activities by Indian entities like MapmyIndia, while restricting foreign entities from conducting vehicle-based ground surveys or street view surveys, and from acquiring, re-selling granular geospatial data as well as restricting these to pass through their servers. Thus, for all customers, Indian entities who offer map data products and APIs, would become the preferred supplier. MapmyIndia is an Indian entity and the leading supplier in this space.

| Some Product & Platform Updates

MapmyIndia

Platform & IoT (“Software as a Service” or “SaaS”, and “Platform as a Service” or “PaaS”):

- MapmyIndia now offers end-to-end drone solution capabilities to customers including flying drones safely and then acquiring and processing data captured from drones, finally disseminating and delivering the data in multiple formats, combined with the rest of MapmyIndia’s data and platforms, to provide integrated solutions for a wide range of use cases across industry verticals. MapmyIndia is positioned as a leading drone solution provider, in a sector that is set to explode with continued liberalization.
- Further enhancing capabilities of customers to optimize logistics costs, MapmyIndia released its Vehicle Routing Problem (VRP) solution which can optimize field and fleet operations, minimizing transport, logistics and delivery costs of customers while helping them maximize their SLA capabilities for their customers
- For updated information across all of the company’s products, platforms, APIs and solutions, customers and users can visit www.mapmyindia.com.

 MAPPLS

Other Important Updates: Dividend Policy and Inorganic Acquisitions and Investments

MapmyIndia

Dividend Payment Discussion

The Board in its meeting today (January 27th 2022) discussed the Dividend Policy for the Company and requested the Audit Committee to explore the possibility and make suitable recommendations for declaration of interim dividend. Accordingly, the stock exchanges have been intimated.

Other Important Updates: Dividend Policy and Inorganic Acquisitions and Investments

MapmyIndia

Inorganic Growth:

The Board gave approval for acquiring 9.99% stake in, Pupilmesh Pvt Ltd, a young, exciting automotive tech and augmented reality metaverse tech company, for a consideration of Rs 49.95 Lakhs. This will allow us to bring to market cutting-edge augmented reality based helmets and heads-up-displays for 2-wheelers and 4-wheelers, and glasses for professionals, powered by MapmyIndia's maps and technologies.

The Board was informed about the Company having identified a potential acquisition target in the field of IoT and logistics SaaS tech. This will substantially expand our ability to further penetrate the commercial vehicle market in India with solutions powered by MapmyIndia's maps and technologies.

Disclaimer



This presentation and the accompanying slides (the "Presentation") have been prepared by C.E. Info Systems Limited ("Company") solely for information purposes and to provide background information about the Company and do not constitute an offer to sell or, recommendation or solicitation or invitation of any offer to subscribe for or purchase any securities and nothing contained herein shall form the basis of any contract or commitment whatsoever. This Presentation is strictly confidential and may not be taken away, copied, published, distributed or transmitted or reproduced or redistributed or passed on directly or indirectly to any other person, whether within or outside your organization or firm, or published in whole or in part, for any purpose by recipients directly or indirectly to any other person.

This Presentation is not intended to be a prospectus, an offer letter, offering circular, offering document, information memorandum, statement in lieu of a prospectus, draft red herring prospectus, red herring prospectus, invitation, advertisement or prospectus as defined under the Companies Act, 2013 as amended, the Securities and Exchange Board of India (Issue of Capital and Disclosure Requirements) Regulations, 2018, as amended, or any other applicable law in India.

The information contained in this Presentation should be considered in the context of the circumstances prevailing at the time and has not been, and will not be, updated to reflect material developments which may occur after the date of the Presentation. The information set out herein may be subject to updating, completion, revision, verification and amendment without notice and such information may change materially. This presentation is based on the economic, regulatory, market and other conditions as in effect on the date hereof. It should be understood that subsequent developments may affect the information contained in this presentation, which neither the Company nor its affiliates, advisors or representatives are under an obligation to update, revise or affirm.

You acknowledge and agree that the Company and/or its affiliated companies and/or their respective employees and/or agents have no responsibility or liability (express or implied) whatsoever and howsoever arising (including, without limitation for any claim, proceedings, action, suits, losses, expenses, damages or costs) which may be brought against or suffered by any person as a result of acting in reliance upon the whole or any part of the contents of this Presentation and neither the Company, its affiliated companies nor their respective employees or agents accepts any liability for any error, omission or misstatement, negligent or otherwise, in this Presentation and any liability in respect of the Presentation or any inaccuracy therein or omission therefrom which might otherwise arise is hereby expressly disclaimed.

Certain statements contained in this Presentation may be statements relating to the Company's beliefs, plans and expectations about the future and other forward looking statements that are based on management's current expectations or beliefs as well as a number of assumptions about the Company's operations and factors beyond the Company's control or third party sources and involve known and unknown risks and uncertainties that could cause actual results to differ materially from those contemplated by the relevant forward looking statements. Forward looking statements contained in this Presentation regarding past trends or activities should not be taken as a representation that such trends or activities will continue in the future. There is no obligation to update or revise any forward looking statements, whether as a result of new information, future events or otherwise. You should not place undue reliance on forward looking statements, which speak only as of the date of this Presentation.

Certain data contained in this Presentation was obtained from various external data sources, and neither the Company nor any of its affiliates, advisors or representatives has verified this data with independent sources. Accordingly, the Company and its affiliates, advisors and representatives make no representation as to the fairness, accuracy, correctness or completeness of that data, and this data involves risks and uncertainties and is subject to change based on various factors.

The information contained in this Presentation is not to be taken as any recommendation made by the Company or any other person to enter into any agreement with regard to any investment. You will be solely responsible for your own assessment of the market and the market position of the Company and you will conduct your own analysis and be solely responsible for forming your own view of the potential future performance of the business of the Company.

MapmyIndia

India's leading provider of **advanced digital maps**,
geospatial software & **location-based IoT** technologies

B2B and B2B2C market leader for maps and geospatial
products in India with a comprehensive suite of
SaaS, PaaS and MaaS offerings

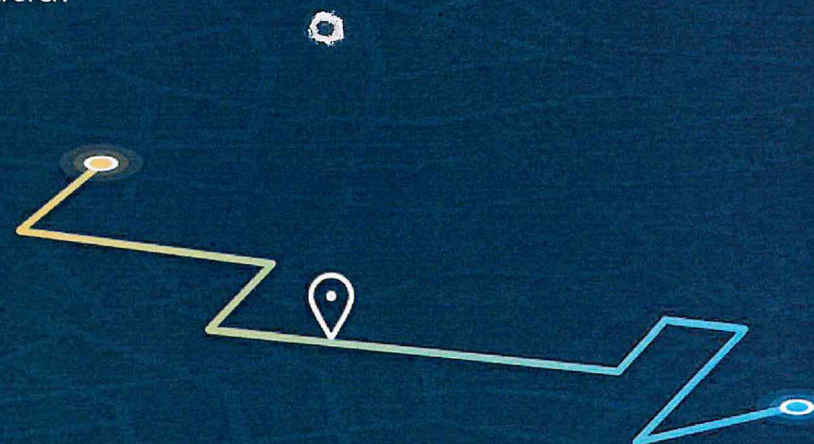
C.E. Info Systems Limited

MapmyIndia

Investor Queries: investor.relations@mapmyindia.com

Media Queries: pr@mapmyindia.com

More information: www.mapmyindia.com



 MAPPLS