

31st October, 2017

To,
The Secretary
BSE Limited
P J Towers,
Dalal Street,
Mumbai – 400 001
Scrip Code: 532706

The Manager
National Stock Exchange of India Limited
Exchange Plaza, 5th Floor, Plot No C/1,
G Block, Bandra-Kurla Complex,
Bandra (East), Mumbai – 400 051
Scrip Code: INOXLEISUR

Dear Sir / Madam,

Sub: Disclosure of Material Event / Information under Regulation 30 of SEBI (Listing Obligations and Disclosure Requirements) Regulations, 2015 – Earnings Presentation.

Pursuant to Regulations 30 of the Securities and Exchange Board of India (Listing Obligations and Disclosure Requirements) Regulations, 2015, a copy of the Earnings Presentation that we propose to make during the Conference Call for analyst and investors scheduled to be held on Tuesday, 31st October, 2017 at 3.30 p.m. is enclosed and the said Earnings Presentation has also been uploaded on the Company's Website at <https://www.inoxmovies.com/Corporate.aspx?Section=3>

We request you to kindly take the same on record.

Thanking you.

Yours faithfully,
For INOX Leisure Limited


Dhanraj Mulki

**Vice President - Legal
& Company Secretary**
Encl: As above.





pavtm
IMAX **INOX** **INSIGNIA** **LASER**

UNWIND

INOX

LIVE *the* MOVIE

INOX LEISURE LTD.

Q2&H1 FY2018
RESULTS UPDATE

Introducing the 'THEATRE OF DREAMS' ... INOX INSIGNIA at Atria Mall, Worli Mumbai



- Live food counter serving gourmet delights
- A new level of luxury paired with bespoke interiors
- Laser projection with Dolby Atmos Sound and 3D powered by Volfoni systems

- Theatres with opulent recliners
- Personalized ticketing and butler-on-call
- Gourmet Menu curated by Celebrity Chef Vicky Ratnani
- Staff Uniforms crafted by Arjun Khanna



✓This presentation and the following discussion may contain “forward looking statements” by Inox Leisure Limited (“ILL” or “the Company”) that are not historical in nature. These forward looking statements, which may include statements relating to future state of affairs, results of operations, financial condition, business prospects, plans and objectives, are based on the current beliefs, assumptions, expectations, estimates, and projections of the management of ILL about the business, industry and markets in which ILL operates.

✓These statements are not guarantees of future performance, and are subject to known and unknown risks, uncertainties, and other factors, some of which are beyond ILL’s control and difficult to predict, that could cause actual results, performance or achievements to differ materially from those in the forward looking statements.

✓Such statements are not, and should not be construed, as a representation as to future performance or achievements of ILL. In particular, such statements should not be regarded as a projection of future performance of ILL. It should be noted that the actual performance or achievements of ILL may vary significantly from such statements.



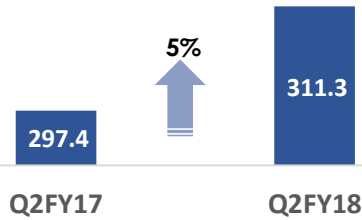
Entrance
Atria, Worli, Mumbai

- Q2 & H1 FY18 RESULT HIGHLIGHTS
- Q2 & H1 FY18 RESULT ANALYSIS
- NEW PROPERTIES OPENED
- PAN INDIA PRESENCE
- NEW SCREENS PIPELINE
- CONTENT PIPELINE
- SHAREHOLDING STRUCTURE
- ANNEXURE

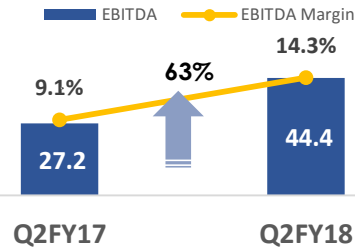
Q2 & H1FY18 Result Highlights

Q2 FY18 YoY Comparison

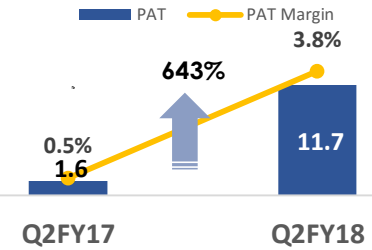
Revenue from Operations



EBITDA

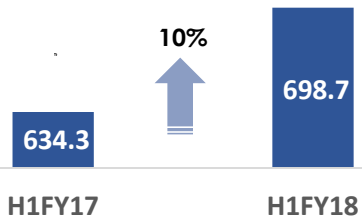


PAT

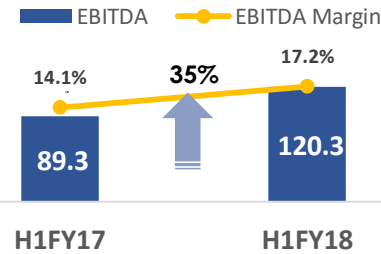


H1 FY18 YoY Comparison

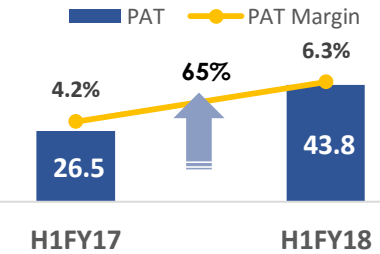
Revenue from Operations



EBITDA

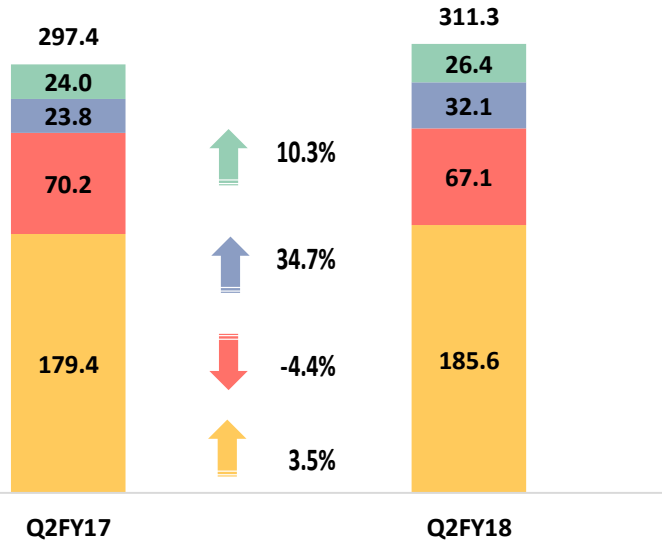


PAT

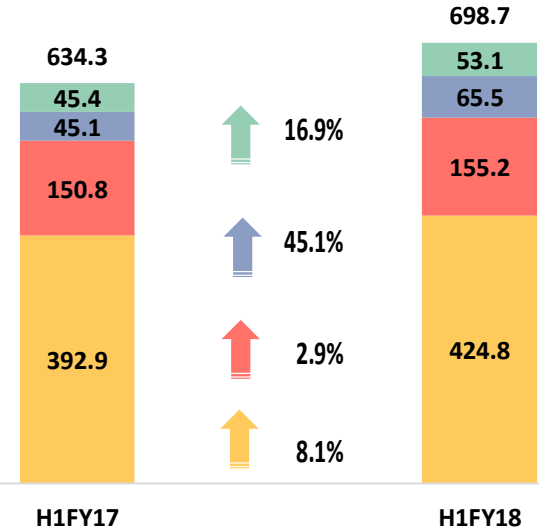


Q2 & H1FY18 Results Analysis – Revenue Break Up Analysis

Q2 FY18 YoY Comparison

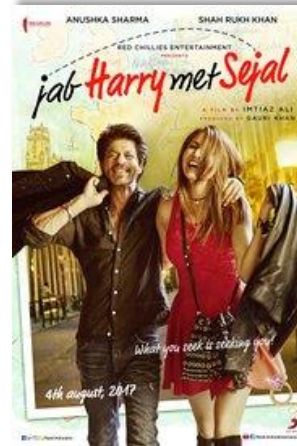
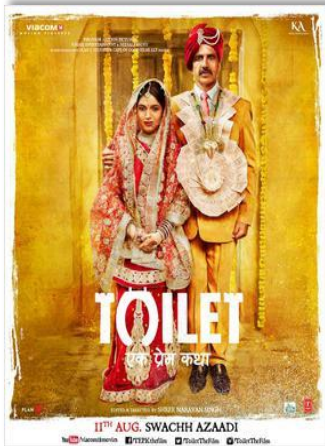


H1 FY18 YoY Comparison



%Share	Q2FY17	Q2FY18	H1FY17	H1FY18
Net Box Office	60.3%	59.6%	61.9%	60.8%
Net Food & Beverage	23.6%	21.5%	23.8%	22.2%
Advertisement	8.0%	10.3%	7.1%	9.4%
Other Operating Revenues	8.1%	8.5%	7.2%	7.6%

TOP 5 Movies in INOX

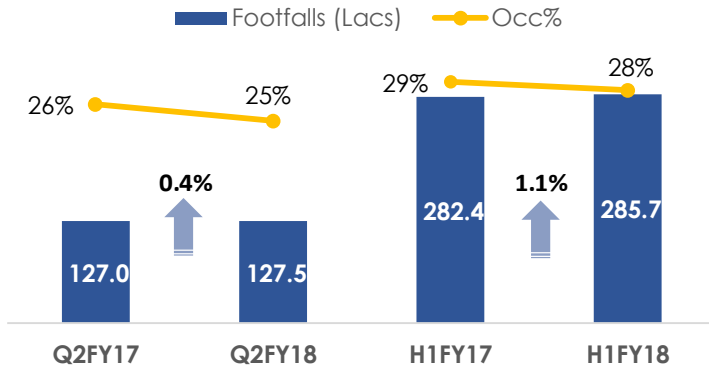


Q2FY18	Toilet Ek Prem Katha	Spiderman Homecoming	Jab Harry Met Sejal	Jagga Jasoos	Mubarakan
Footfalls [Lacs]	12.44	6.23	5.39	6.05	5.61
GBOC [INR Crs.]	24.75	13.11	11.96	11.39	10.33

Top 5 films accounted for 30% of Q2 FY18 GBOC revenues (51% in Q2 FY17)

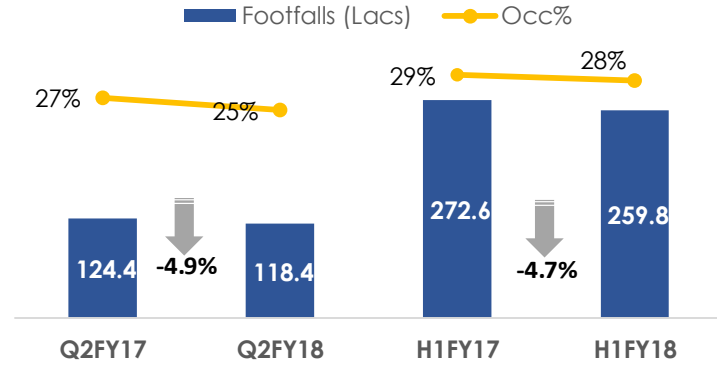
Q2 & H1FY18 Results Analysis – Key Operational Metrics

Overall Footfalls & Occupancy%

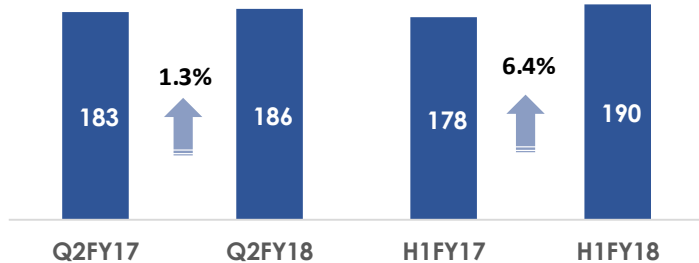


Footfalls with Management properties: Q2FY18 – 134.06 lacs, H1FY18 – 302.05lacs

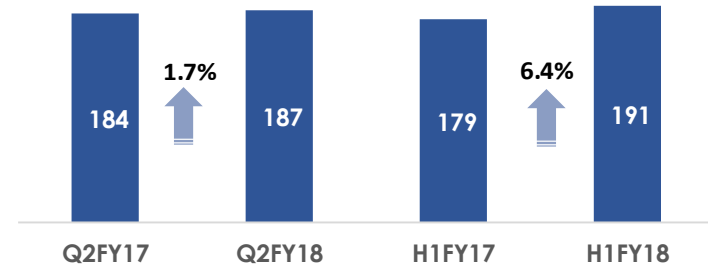
Comparable Properties Footfalls & Occupancy%



Overall Average Ticket Price (ATP) [INR]



Comparable Properties Average Ticket Price (ATP) [INR]

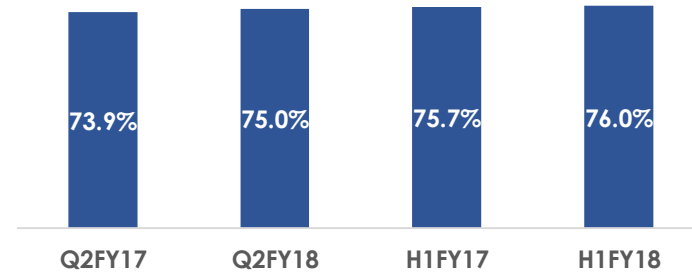
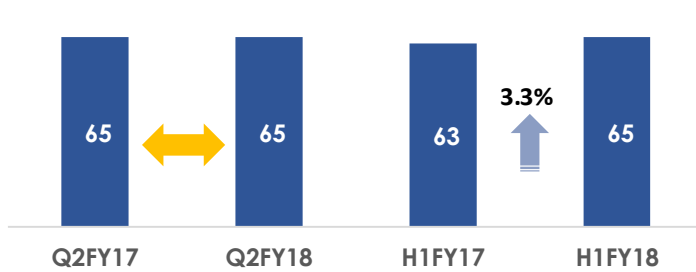


Note: All above charts exclude management properties

Q2 & H1FY18 Results Analysis – Key Operational Metrics

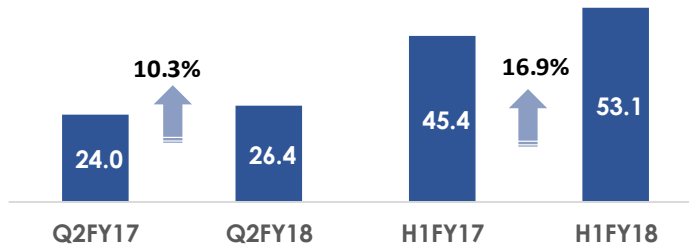
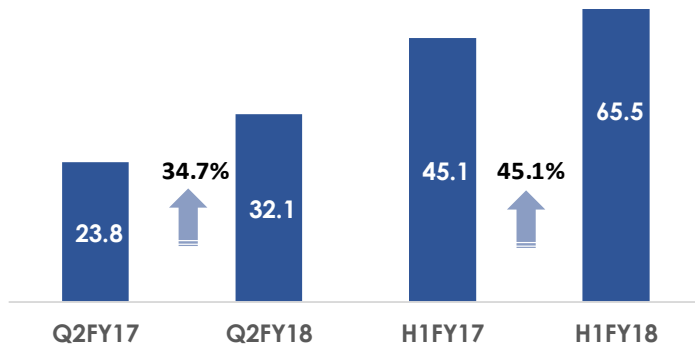
Spend Per Head (SPH) [INR]

Food & Beverages – Net Contribution (%)



Advertisement Revenue [INR Crs.]

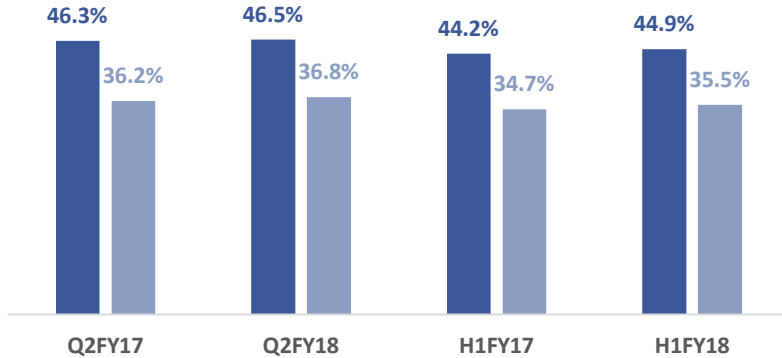
Other Operating Revenue [INR Crs.]



Q2 & H1FY18 Results Analysis – Key Operational Metrics

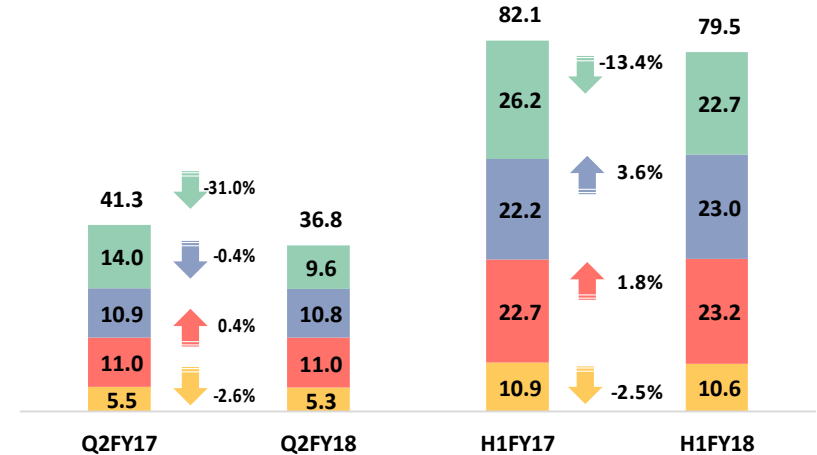
Film Distributor Share [%]

■ Distributor Share On NBOC ■ Distributor Share On GBOC



Other Overheads Per Operating Screen (INR Lacs)

■ Employee Benefits ■ Property Rent & Conducting Fees
 ■ CAM, Power & Fuel, R&M ■ Other Overheads



New Properties Opened



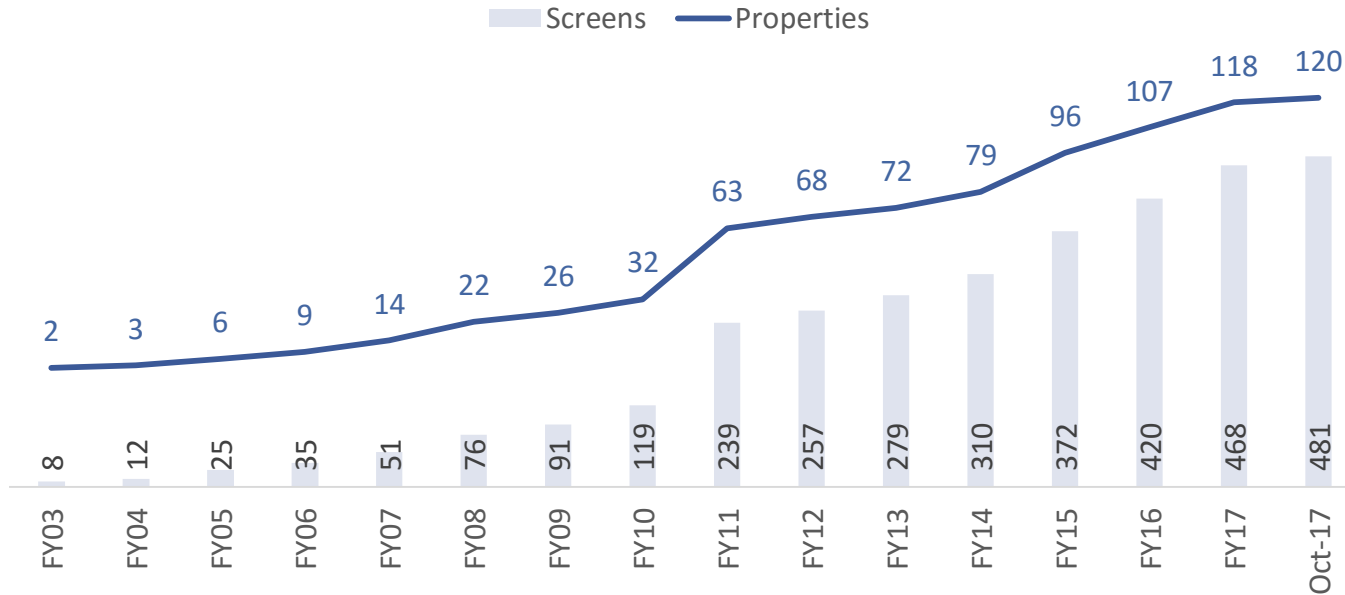
Greater Noida Omaxe Mall (14th Jul 2017)
5 Screens 1223 Seats



Atria, Worli Mumbai (21st Oct 2017)
5 Screens 167 Seats

Property Names	Opened	Property	Screens	Seats
Pune Hertiage Mall	Q1FY18	1	4	662
Greater Noida Omaxe Mall	Q2FY18	1	5	1,223
Mumbai Worli Atria	Q3FY18	1	5	167
YTD Openings		3	14	2,052

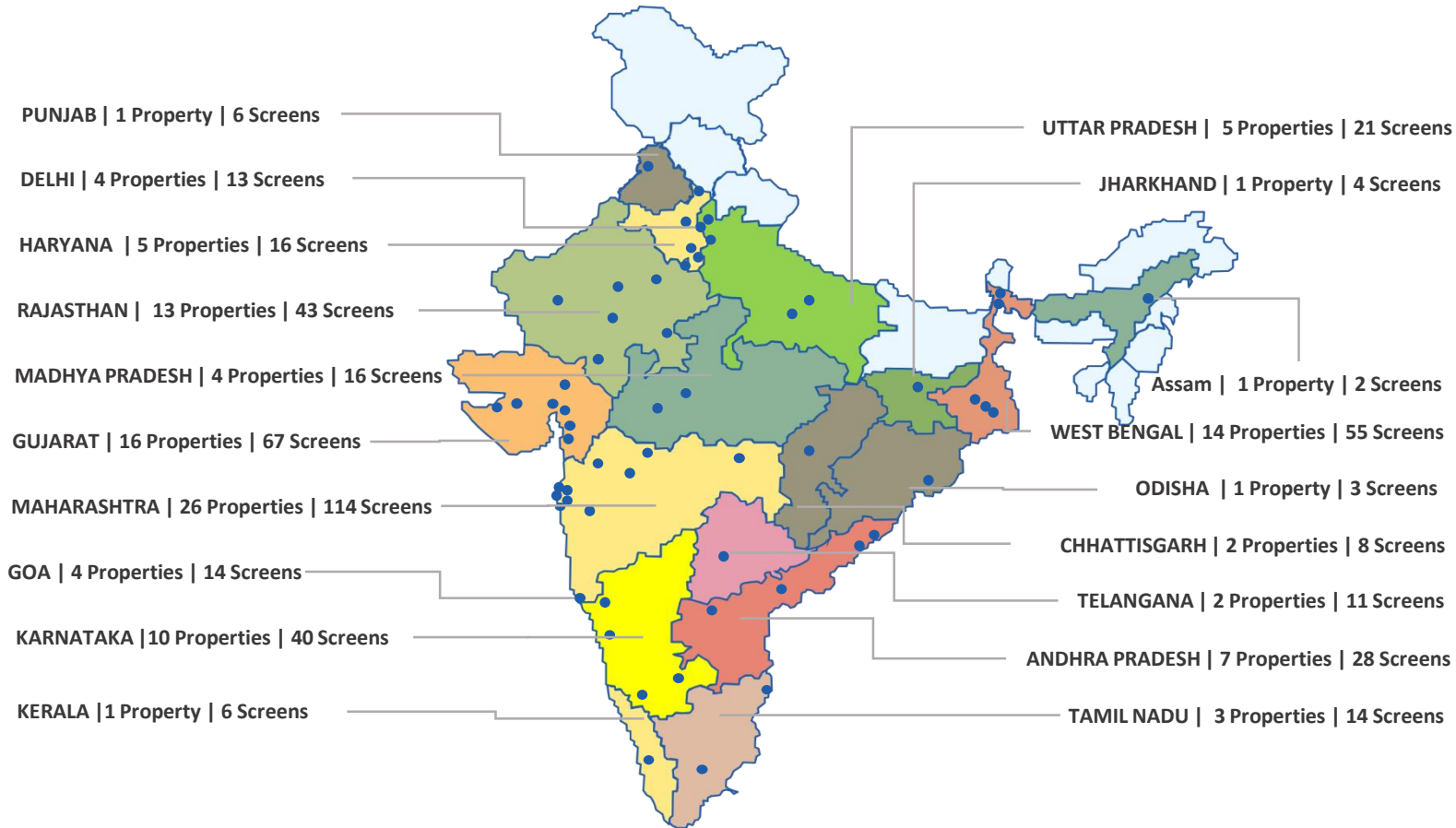
Track Record of Aggressive Expansion



ON AN AVERAGE ADDITION OF 3 SCREENS EVERY MONTH OVER THE LAST DECADE

Note: Includes Acquisition of 1. Calcutta Cine Prime Limited in FY07, 2. Fame India in FY11, 3. Satyam Cineplexes in FY15

ONE OF THE LARGEST MULTIPLEX CHAIN OPERATOR IN INDIA



19
States

58
Cities

120
Properties

481
Screens

119,342
Seats

* Includes 8 management properties with 29 screens and 7,370 seats

FY18 Pipeline			
Properties	Properties	Screens	Seats
Pune Heritage (Opened 26 th Apr17)	1	4	662
Greater Noida Omaxe (Opened 14 th Jul17)	1	5	1,223
Mumbai Atria (Opened 21 st Oct17)	1	5	167
Kolhapur	1	4	870
Coimbatore	1	9	2,088
Cuttack	1	4	846
Nadiad	1	3	649
Navi Mumbai	1	4	779
Gurgaon	1	3	619
Surat (Existing Property)	0	1	30
Bhubaneswar	1	3	612
Total	10	45	8,545

	Properties	Screens	Seats
FY17	118	468	118,285
Additions - Apr17 to Oct17	3	14	2,052
Expected - Nov17 to Mar17	7	31	6,493
FY18**	127	512	125,835
Additions Post FY18	85	515	94,777
Leading to	212	1,027	220,612

**** Note;**

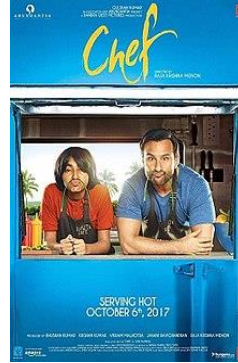
- 1 property with 1 screen and 612 seats reduced at Bengaluru Shankarnag due to Completion of the Lease Tenure
- 112 seats reduced in Bharuch Bluechip in Gujarat due to conversion into recliner seats
- 51 seats reduced in Malleshwaram, Bengaluru due to renovation
- 220 seats reduced in Metro, Mumbai due to renovation

STRONG VISIBILITY FROM NEW SCREENS PIPELINE BACKED BY SIGNED AGREEMENTS



Blade Runner 2049

Release Date:
6th October 2017
Cast: Ryan Gosling,
Harrison Ford
Director: Denis
Villeneuve
Banner: Warner
Bros. Pictures



Chef

Release Date:
6th October 2017
Cast: Saif Ali Khan
Director: Raja
Krishna Menon
Banner: T-Series



Secret Superstar

Release Date:
19th October 2017
Cast: Aamir Khan
Director: Advait
Chandan
Banner: Aamir
Khan Productions



Golmaal Again

Release Date:
20th October 2017
Cast: Ajay Devgan,
Kareena Kapoor,
Tusshar Kapoor,
Arshad Warsi
Director: Rohit
Shetty
Banner: Phantom
Films



Mersal

Release Date:
18th October 2017
Cast: Vijay, Samantha,
Kajal
Director: Atlee Kumar
Banner: Thenandal
Studio Ltd.



Geostorm (3D IMAX)

Release Date:
27th October 2017
Cast: Gerard Butler,
Abbie Cornish, Ed
Harris
Director: Dean Devlin
Banner: Warner
Bros., Skydance
Media, Electric
Entertainment



Ittefaq

Release Date:
3rd November 2017
Cast: Siddharth Malhotra, Akshay Khanna, Sonakshi Sinha
Director: Abhay Chopra
Banner: Red Chillies Entertainment, BR Films, Dharma Productions



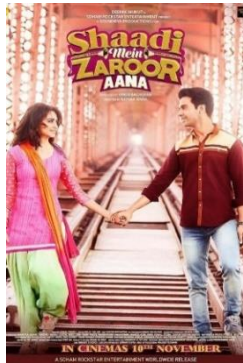
Thor Ragnarok (3D IMAX)

Release Date:
3rd November 2017
Cast: Chris Hemsworth, Benedict Cumberbatch, Idris Elba, Jaimie Alexander
Director: Taika Waititi
Banner: Marvel Studios



Qarib Qarib Single

Release Date:
10th November 2017
Cast: Irfan Khan, Parvathy Thiruvothu, Bijendra Kala, Neha Dhupia
Director: Tanuja Chandra
Banner: Zee Studios



Shaadi Mein Zaroor Aana

Release Date:
10th November 2017
Cast: Rajkumar Rao, Kirti Kharbanda, Govind Namdev
Director: Vinod Bachchan
Banner: Soundarya Production



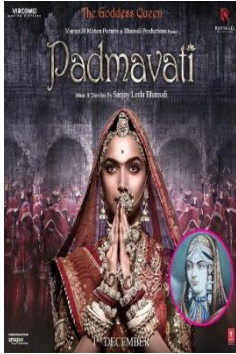
Tumhari Sulu

Release Date:
17th November 2017
Cast: Vidhya Balan
Director: Suresh Triveni
Banner: T-Series, Ellipsis Entertainment



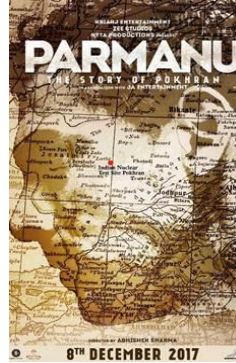
Justice League (3D IMAX)

Release Date:
17th November 2017
Cast: Gal Gadot, Jason Momoa, Amber Heard, Henry Cavill, Ben Affleck, Amy Adams
Director: Zack Snyder
Banner: DC Films, RatPac Entertainment, Atlas Entertainment, Cruel and Unusual Films



Padmavati

Release Date:
1st December 2017
Cast: Deepika Padukone, Ranveer Singh
Director: Sanjay Leela Bhansali
Banner: Bhansali Productions



Parmanu - The Story Of Pokhran

Release Date:
8th December 2017
Cast: John Abraham, Boman Irani, Diana Penty
Director: Abhishek Sharma
Banner: KriArj Entertainment, J A Entertainment, Zee Studios



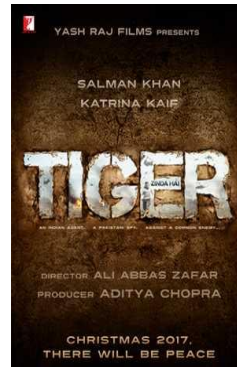
Fukrey Returns

Release Date:
8th December 2017
Cast: Richa Chadha, Pulkit Samrat, Ali Fazal, Varun Sharma
Director: Mrigdeep Singh Lamba
Banner: Excel Entertainment



Star Wars : Episode VIII - The Last Jedi (3D IMAX)

Release Date:
15th December 2017
Cast: Benecio Del Toro, Carrie Fisher, Adam Driver, Andy Serkis
Director: Rian Johnson
Banner: Lucasfilm Ltd.



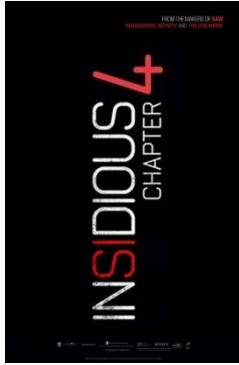
Tiger Zinda Hai

Release Date:
22nd December 2017
Cast: Salman Khan, Katrina Kaif
Director: Ali Abbas Zaffar
Banner: Yash Raj Films



Jumanji (3D IMAX)

Release Date:
22nd December 2017
Cast: Dwayne Johnson, Jack Black, Kevin Hart, Tom Holland
Director: Jake Kasdan
Banner: Columbia Pictures, Matt Tolmach Productions, Radar Pictures, Seven Bucks Productions



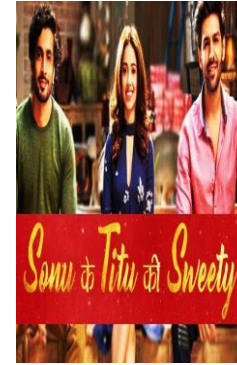
Insidious Chapter 4

Release Date:
5th January 2018
Cast: Spencer Locke,
Josh Stewart, Bruce
Davinson
Director: Adam Robitel
Banner: Blumhouse
Productions, Stage 6
Films



Bharat Ane Nenu

Release Date:
11th January 2018
Cast: Mahesh
Babu, Kiara Advani
Director: Koratala
Siva
Banner: DVV
Entertainments



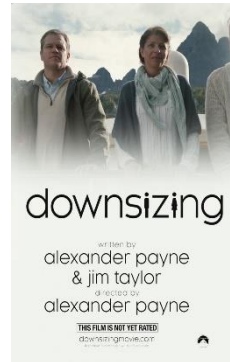
Sonu Ke Titu Ki Sweety

Release Date:
12th January 2018
Cast: Karthik Aaryan,
Nusrat Bharucha,
Sunny Singh Najjar
Director: Luv Ranjan
Banner: T-Series, Luv
Films



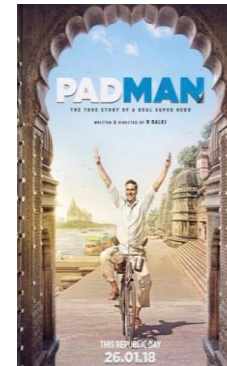
Thaana Serndha Kootam

Release Date:
12th January 2018
Cast: Surya, Keerthy
Suresh
Director: Vighnesh
Shivan
Banner: Studio
Green



Downsizing

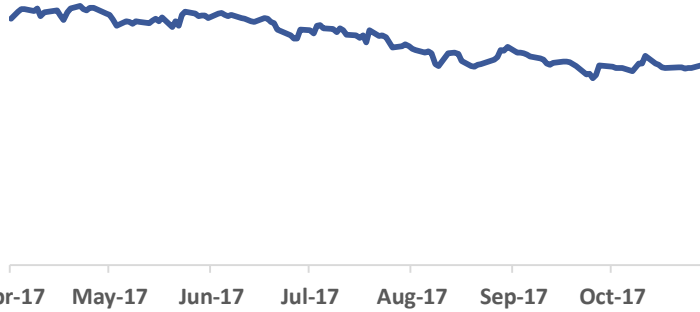
Release Date:
12th January 2018
Cast: Kristen Wiig,
Matt Damon,
Cristoph Waltz
Director: Alexander
Payne
Banner: Ad
Hominem
Enterprises



Padman

Release Date:
26th January 2018
Cast: Akshay Kumar,
Sonam Kapoor,
Radhika Apte
Director: R Balki
Banner: Mrs
Funnybones Movies

Share Price Performance

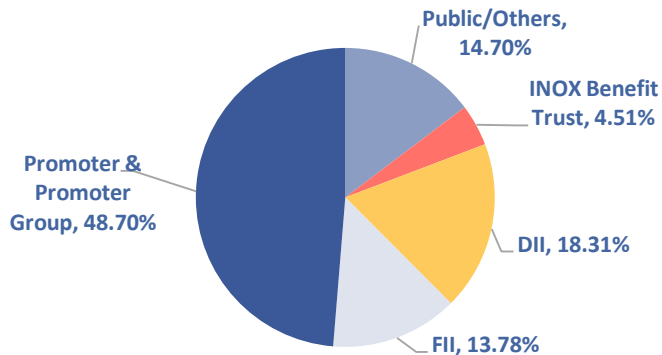


Source: BSE

Market Data	As on 30th Oct 2017
Market Capitalisation (INR Crs.)	2,240
Price (INR)	232.2
No. of Shares Outstanding (Crs.)	9.6
Face Value (INR)	10.0
52 week High/Low (INR)	305.85/193

Source: BSE

% Shareholding as of Sep 2017



Source: Company

Key Institutional Investors – Sep 2017	% Holding
DSP Blackrock Small MF	6.7%
Reliance MF	3.5%
Birla Sunlife	3.3%
Kuwait Investment Authority Fund	3.0%
Goldman Sachs India Limited	2.6%
Morgan Stanley	2.5%
ICICI Prudential MF	1.7%
Aadi Financial Advisors LLP	1.5%
TATA MF	1.2%
Sundaram MF	1.1%

Source: Company

Particulars (INR Crs.)	Sep-17	Mar-17
Share Capital	96.2	96.2
Other Equity	533.5	489.0
Interest in Inox Benefit Trust, at cost	(32.7)	(32.7)
Total Shareholder funds	597.0	552.5
Non-Controlling Interest	0.01	0.01
Total Equity	597.0	552.5
Total Debt	307.0	317.0
Other Non-Current Liabilities	93.3	96.0
Total Sources of Funds	997.4	965.5
Fixed Assets	771.9	765.3
Other Non-Current Assets	277.7	273.5
Current Assets	101.8	81.8
Cash & Cash Equivalents	85.8	23.5
Less: Current Liabilities	239.9	178.5
Net Current Assets	(52.2)	(73.3)
Total Assets	997.4	965.5

Key Balance sheet Ratios	Sep-17	Mar-17
Net Debt : Equity	0.4	0.5
Return on Equity (ROE)	8.3%	5.7%
Return on Capital Employed (ROCE)	10.5%	7.3%

- Calculated on Trailing 12 Months Basis
- ROE: PAT/Avg. Equity, ROCE: EBIT/Avg. Capital Employed (Capital Employed = Equity + Total Debt)

Strong Balance Sheet → **Low Leverage
Net D/E: 0.4x**

**Treasury Stock in
Inox Benefit Trust** → **101 INR Crs.
Current Market
Price**

Promoters Stake → **48.7%**

**Real Estate on
Balance Sheet** → **INR 350 Crs.**

**Potential To Grow Aggressively Without Any
Significant Stress On Balance Sheet**



Annexure



Annexure: Consolidated P&L Statement

Particulars (INR Crs.)	Q2 FY18	Q2 FY17	YoY %	Q1FY18	QoQ %	H1 FY18	H1 FY17	YoY %	FY17
Revenue from Operations	311.3	297.4	4.7%	387.4	-19.6%	698.7	634.3	10.2%	1,220.7
Exhibition Cost	88.5	86.6	2.1%	107.1	-17.4%	195.5	181.6	7.7%	345.3
Food & Beverages Cost	16.8	18.3	-8.5%	20.5	-18.1%	37.2	36.7	1.4%	68.1
Employee Benefits Expense	23.3	21.8	6.9%	23.0	1.5%	46.3	43.4	6.5%	86.4
Lease Rental & Hire Charges	48.5	44.0	10.1%	52.2	-7.1%	100.6	90.5	11.2%	185.8
CAM, Power & Fuel, R&M	47.5	43.5	9.3%	52.6	-9.7%	100.1	88.5	13.2%	174.5
Other Expenses	42.3	56.0	-24.3%	56.3	-24.8%	98.6	104.3	-5.4%	214.6
EBITDA	44.4	27.2	63.4%	75.9	-41.4%	120.3	89.3	34.7%	146.1
EBITDA Margin %	14%	9%	513 bps	20%	-530 bps	17%	14%	314 bps	12%
Depreciation & Amortisation	21.5	20.8	3.5%	21.5	-0.2%	43.0	41.0	4.8%	84.1
Impairment Loss on PP&E	0.7	-		0.6	11.6%	1.3	-		1.3
Other Income	2.9	2.1	35.8%	2.3	24.3%	5.2	4.6	13.1%	9.1
Finance Cost	7.3	5.8	25.4%	7.2	1.7%	14.5	11.6	24.8%	25.3
Exceptional Items	-	-		-		-	-		-
Share of Profit from Joint Ventures	(0.0)	(0.0)	-61.3%	0.0	-198.7%	0.0	(0.0)	-101.4%	0.1
PBT	17.8	2.7	559.8%	48.9	-63.5%	66.7	41.2	61.9%	44.6
Current Tax	6.7	1.9	247.8%	17.8	-62.3%	24.5	15.7	55.9%	14.7
Deferred Tax	(0.6)	(0.8)	-30.9%	(1.1)	-47.6%	(1.6)	(1.1)	51.9%	0.9
Tax pertaining to earlier years	-	-		-		-	-		(1.6)
PAT	11.7	1.6	643%	32.1	-64%	43.8	26.5	65%	30.6
PAT Margin %	4%	1%	322 bps	8%	-453 bps	6%	4%	208 bps	2.5%
Earnings Per Share (EPS)	1.27	0.17	643%	3.49	-64%	4.77	2.89	65%	3.33

Annexure: Consolidated Balance Sheet Statement

Equity & Liabilities (INR Crs.)	Sep-17	Mar-17
Equity:		
Equity Share Capital	96.2	96.2
Other Equity	533.5	489.0
Interest in Inox Benefit Trust, at cost	(32.7)	(32.7)
Equity attributable to owners of the company	597.0	552.5
Non-Controlling Interest	0.0	0.0
Total Equity	597.0	552.5
Non-current liabilities:		
Borrowings	270.0	291.9
Other Financial Liabilities	2.6	3.1
Provisions	10.2	10.0
Other Non-current Liabilities	80.5	82.9
Total of Non-Current Liabilities	363.3	388.0
Current Liabilities:		
Borrowings	-	-
Trade Payables	102.4	88.4
Other Financial Liabilities	98.0	64.8
Other Current Liabilities	59.9	36.0
Provisions	16.5	14.4
Current Tax Liabilities (Net)	0.0	0.0
Total of Current Liabilities	276.9	203.6
Total Equity & Liabilities	1,237.2	1,144.1

Assets (INR Crs.)	Sep-17	Mar-17
Non-Current Assets:		
Property, Plant & Equipment	670.8	672.8
Capital work-in-progress	72.0	62.6
Goodwill	17.5	17.5
Other Intangible Assets	11.7	12.4
Investments in Joint Ventures	0.1	0.1
Other Investments	1.0	1.2
Loans	71.7	69.0
Other Financial Assets	81.4	71.8
Deferred Tax Assets (Net)	37.6	48.3
Tax Assets (Net)	8.4	5.5
Other Non Current Assets	77.6	77.6
Total Non Current Assets	1,050	1,039
Current Assets:		
Inventories	9.3	9.1
Other Investments	67.6	10.7
Trade Receivables	68.8	46.6
Cash and Bank Balances	16.8	9.8
Bank Balances Other than above	2.2	3.4
Loans	4.3	4.4
Other Financial Assets	0.3	0.3
Other Current Assets	18.4	21.0
Total Current Assets	187.7	105.3
Total Assets	1,237.2	1,144.1

Business Overview

- Inox Leisure Limited (ILL), incorporated in 1999, is one of the largest multiplex operator in India
- ILL is a part of Inox Group which is diversified across industrial gases, engineering plastics, refrigerants, chemicals, cryogenic engineering, renewable energy and entertainment sectors
- ILL currently operates 120 properties (481 screens and 119,342 seats) located in 58 cities across India, being the only multiplex operator having such a diverse presence across pan India
- The company accounts for ~20% share of the multiplex screens in India and ~8% share of domestic box office collections
- The company has aggressively scaled up through organic and inorganic expansion over last decade growing from 2 properties – 8 screens in FY03 to 120 properties – 481 screens at present, virtually adding on an average 3 screens every month over more than a decade.

Key Strengths

- One of the largest multiplex chains in India
- Most diversified distribution of multiplexes in India
- Premium multiplex properties, state of the art technology and unmatched service and ambience
- Strong partnerships with more than 50 leading Indian and Global brands, offering high growth potential for advertising and other ancillary revenues
- Strong management team and recognized and trusted corporate group

Strong Financials

- Consolidated Revenues, EBITDA and PAT were Rs 1,220.7 cr, Rs 146.1 cr and Rs 30.6 cr in FY17
- Strong balance sheet with Gross Debt of Rs 317.0 cr, Net Debt of Rs 293.45 cr and Equity of Rs 552.5 cr in FY17 with net D/E ratio of 0.5x

Annexure : Recognised & Trusted Corporate Group

90 Year track record of consistent business growth

USD \$3 Billion Inox Group diversified across 7 different businesses

10,000+ employees at 150+ business units across India

Distribution network spread over 50+ countries



Listed Companies

Other Key Companies



Gujarat Fluorochemicals Limited

- Largest producer of chloromethanes, refrigerants and Polytetrafluoroethylene in India
- Pioneer of carbon credits in India



Inox Wind Limited

- Fully integrated player in the wind energy market
- State-of-the-art manufacturing plants near Ahmedabad (Gujarat) and at Una (Himachal Pradesh) and new facility in Madhya Pradesh. Madhya Pradesh facility one of the largest in Asia
- Ability to provide end-to-end turnkey solutions for wind farms



Inox Leisure Limited

- One of the largest multiplex chain in India
- In the business of setting up, operating and managing a national chain of multiplexes under the brand name 'INOX'
- Present in 58 cities with 120 multiplexes and 481 screens



Inox FMCG Private Limited

- Launched in January 2016, it is focussed on FMCG business encompassing F&B and non-F&B categories.
- INOX FMCG products branded as "Inox Muchos" are retailed through Modern Trade, General Trade and HORECA Institutions.



Inox Air Products Private Limited

- 50:50 joint venture with Air Products Inc., USA
- Largest producer of industrial gases in India
- 40 plants spread throughout the country



Inox India Private Limited

- Largest producer of cryogenic liquid storage and transport tanks in India
- Offers comprehensive solutions in cryogenic storage, vaporization and distribution engineering
- Has operations in India, USA, Canada, Netherlands and Brazil



Inox Renewables Limited

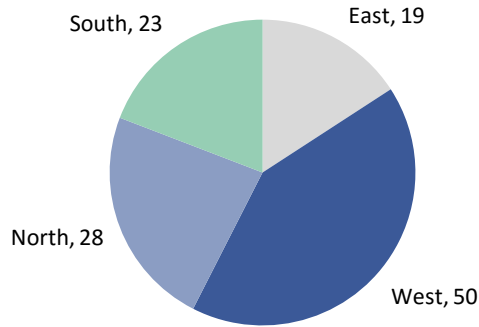
- Engaged in the business of setting up and operating of wind farms
- Existing operating capacity of ~ 260 MW in states of Rajasthan, Maharashtra, Tamil Nadu and Madhya Pradesh

Well Diversified Distribution of Multiplexes across India

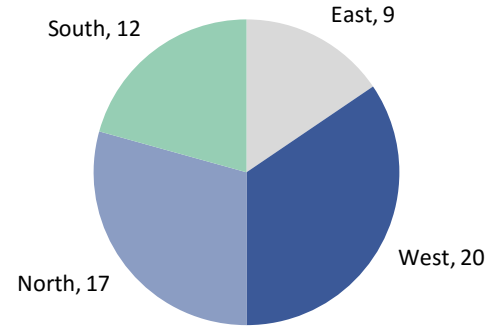
Access to Wide Variety of Regional Content

Lower Dependency on Hindi and English Content

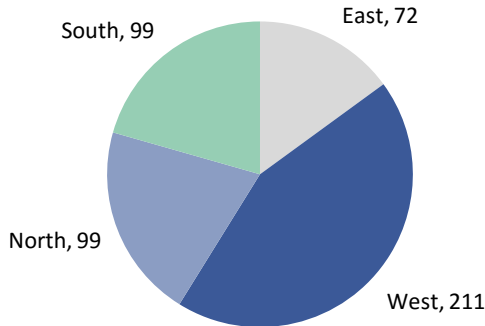
120 Properties



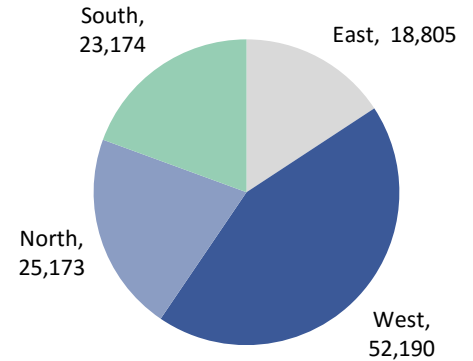
58 cities



481 Screens



119,342 Seats



Includes 8 management properties with 29 screens and 7,370 seats

Annexure: Strong Brand Presence

Automobiles



HONDA



TOYOTA



Mercedes-Benz



Hero

Media



॥ वास्तविक कवचकार ॥
THE REALITY OF POWER



FMCG



SINCE 1930



Consumer Durables



SAMSUNG



Panasonic

BOROSIL



BFSI



IDFC LIMITED



Ecommerce & Telecom



vodafone



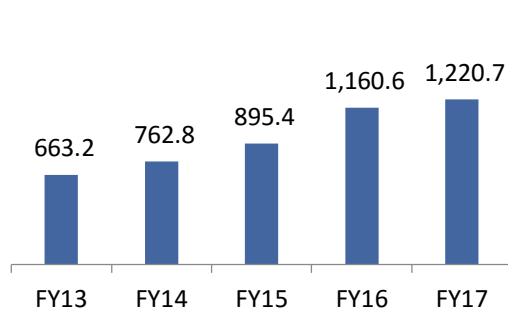
Others



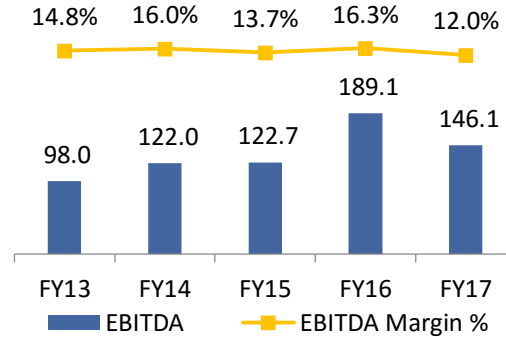
Financial Summary is as per IGAAP for FY13 to FY15 and as per IND-AS for FY16 and FY17.

Revenues for FY13 to FY15 are shown net of entertainment tax, consistent with the revenues under IND-AS for FY16 and FY17

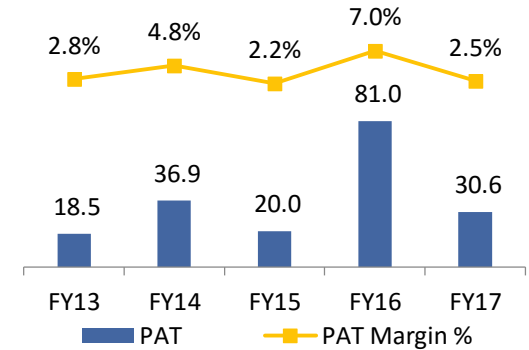
REVENUES



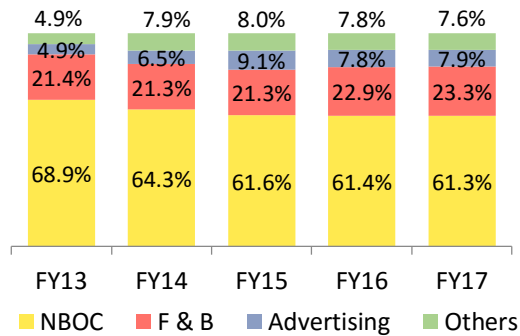
EBITDA



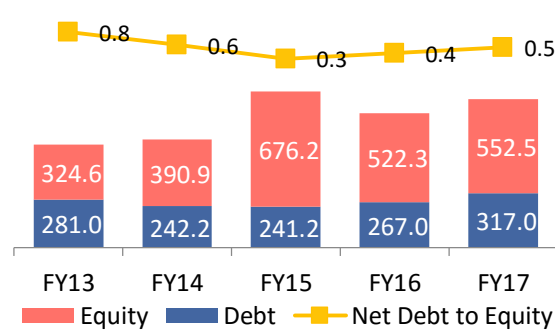
PAT



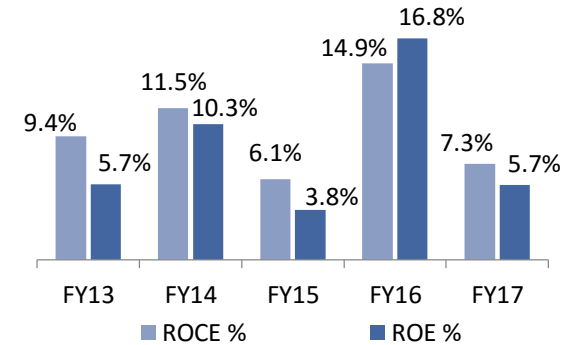
REVENUES - SEGMENT BREAKUP



LEVERAGE ANALYSIS



RETURN METRICS



ROE: PAT/Avg. Equity, ROCE: EBIT/Avg. Capital Employed [(Capital Employed = Equity + Total Debt)

Net Debt = Total Debt – Cash – Bank – Liquid MF Investments

A wide-angle photograph of a modern lounge or bar area. The room features a large, patterned carpet with a swirling, organic design in shades of gold and brown. Several black leather armchairs with gold-colored trim are arranged in small groups around a central, round, gold-colored table with a textured surface. In the background, there are more chairs, a bar area with illuminated displays, and a large, multi-tiered chandelier hanging from the ceiling. The walls are decorated with vertical wood paneling and gold-colored accents. The overall atmosphere is elegant and sophisticated.

Thank You