

September 14, 2016

Mr. Hari K.  
Listing Department  
The National Stock Exchange of India Ltd.  
Exchange Plaza, 5<sup>th</sup> Floor, Plot C/1, G Block  
Bandra – Kurla Complex, Bandra (E)  
Mumbai 400 001  
Fax No.: 26598237/38

The Manager  
Listing Department  
Bombay Stock Exchange Limited  
Phiroze Jeejeebhoy Tower  
Dalal Street  
Mumbai – 400 051  
Fax No.: 22723719/

Dear Sirs,

Sub: Media Release

Please find attached herewith a media release being issued today announcing “Geometric Continues to Revolutionize CNC Programming with a New Release of ‘Tolerance Based Machining’ for CAMWorks.”

This is for your information and records.

Kindly acknowledge receipt.

Thanking you,

Yours Faithfully,  
For **Geometric Ltd.**



**Sunipa Ghosh**  
Company Secretary & Compliance Officer  
Membership No: 22216

**Geometric Limited**

CIN : L72200MH1994PLC077342

Unit No. 703-A, 7th floor, B Wing, Reliable Tech Park, Airoli, Navi Mumbai 400708, India  
T +91.22.67056500 F +91.22.67056891 [www.geometricglobal.com](http://www.geometricglobal.com)

Reg. Office: Plant 11, 3rd floor, Pirojshanagar, Vikhroli (West), Mumbai 400 079, India



## Media Release

**Geometric Americas, Inc.**

15974 N 77th St, Suite 103,  
Scottsdale, AZ 85260-1790 USA.

T +1.480.367.0132

F +1.480.367.0420

For Immediate Release

---

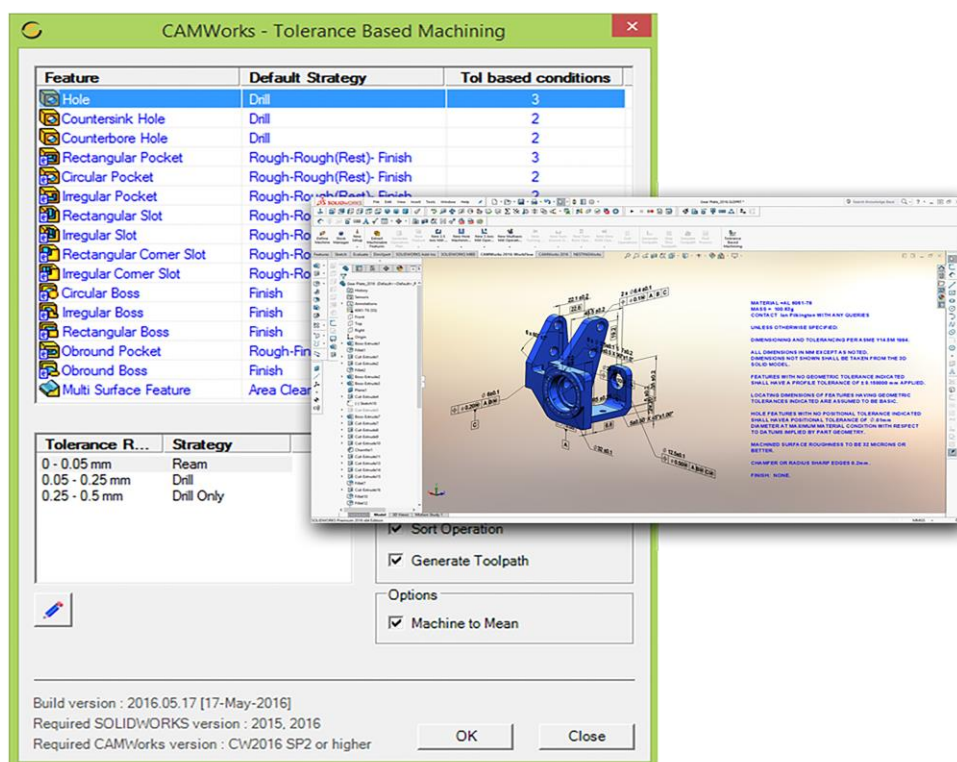
## **Geometric Continues to Revolutionize CNC Programming with a New Release of ‘Tolerance Based Machining’ for CAMWorks®**

*CAMWorks 3D CAM software technology, Tolerance Based Machining uses tolerances, hole callouts, surface finishes, and other annotations to automatically generate CNC programs for SOLIDWORKS 3D parts. In the new release, Tolerance Based Machining has been expanded to support ISO 286-2, (Tolerance Classes for Holes & Shafts)*

**Scottsdale, AZ, Sep 14, 2016:** Geometric Americas ([www.geometricglobal.com](http://www.geometricglobal.com)), a global leader in 3D CNC machining software, today announced a new release of their revolutionary technology that uses SOLIDWORKS® 3D DimXpert and Model Based Definition (MBD) 3D dimensions and annotations to automate the programming of CNC machined components.

CAMWorks was uniquely architected to reduce a 3D solid model into a set of discrete machining features, and apply a knowledge base that selects tools, feeds, speeds, and machining strategies to automate the creation of CNC toolpaths. Tolerance Based Machining dramatically enhances CAMWorks core architecture by adding the ability to read and react to non-geometric manufacturing information such as tolerances, surface finish, and other annotations in 3D models. This ability not only speeds up the CNC programming process, and improvements in quality, but also creates a much stronger design-to-manufacturing process for machined components.

User Interface image 1.0



Jim Foster (VP channel marketing and sales) says, “In a world where every manufacturer is competing globally, we need to have tools that provide real breakthroughs in time-to-market. Tolerance Based Machining not only completes the digital thread between design and manufacture for machined components, but also significantly reduces CNC programming time, improves quality, and allows users to capture and reuse their best practices.

**About CAMWorks:**

CAMWorks’ revolutionary workflow that automatically extracts manufacturing features and leverages knowledge based machining to provide customers with the most advanced solution in the industry for creating CNC programs. CAMWorks capability includes 2.5 and 3 Axis Milling, 3 Plus 2 Advanced Milling, Simultaneous 5 Axis Milling, Turning, Mill-Turn, High Speed Machining and True G-Code Simulation. CAMWorks is SOLIDWORKS Gold Partner product and provides seamless integration and full associativity with SOLIDWORKS parts, assemblies and configurations. For more information, go to [www.camworks.com](http://www.camworks.com).

**About Geometric:**

Geometric is a specialist in the domain of engineering solutions, services and technologies. Its portfolio of Global Engineering services, Product Lifecycle Management (PLM) solutions, Embedded System solutions, and Digital Technology solutions enables companies to formulate, implement, and execute global engineering and manufacturing strategies aimed at achieving greater efficiencies in the product realization lifecycle.

Listed on the Bombay and National stock exchanges in India, the company recorded consolidated revenues of Rupees 12.33 billion (US Dollars 188.49 million) for the year ended March 2016. It employs over 4700 people across 14 global delivery locations in the US, France, Germany, Romania, India, and China. Geometric has been assessed at Maturity Level 3 for CMMI 1.3-Development and CMMI 1.3-Services for its Software and Engineering Services business units and is ISO 9001:2008 certified for engineering operations. The company's operations are also ISO 27001:2005 certified.

##

**For more information, please contact:**

Marcus Freeland

+1.480.367.0132

[marcus.freeland@geometricglobal.com](mailto:marcus.freeland@geometricglobal.com)