

Ref: H/NK/STX/ /2016  
Date: September 14<sup>th</sup>, 2016



National Stock Exchange of India Limited Exchange Plaza Plot No. C/1, G Block Bandra – Kurla Complex Bandra (E), Mumbai - 400 051 Tel.: 2659 8452 Fax No.: 2659 8237-38	BSE Limited Phiroze Jeejeebhoy Towers Dalal Street, Mumbai – 400 001 Tel.: 2272 1233/8058 Extn – 8013 Fax No. : 2272 2037/2039/2041/2061
---	--

Dear Sir/Madam,

**Sub.: Schedule of Analyst Meet & Presentation**

Pursuant to regulation 30 and Part A of Schedule III of SEBI (Listing Obligations and Disclosure Requirements) Regulations, 2015, we would like to inform you that Analyst Meet with the officials of the Company is scheduled on 14<sup>th</sup> September, 2016 at 11.00 AM at St Regis, Lower Parel, Mumbai.

Please find enclosed herewith presentation to be made to the Analysts.

Thanking you,

Yours faithfully,  
For EVEREST INDUSTRIES LIMITED

  
NEERAJ KOHLI  
COMPANY SECRETARY & HEAD – LEAL

**Everest Industries Limited**

D-206 Sector-63 Noida- 201301 Uttar Pradesh Tel +(91)-120-4791800 India  
Helpline 09958037777 info@everestind.com www.everestind.com

Regd. Office GAT No. 152 Lakhmapur Taluka Dindori Nashik 422 202 Maharashtra Tel +91 2557 250375/462 Fax +91 2557 250376

Corporate Identity Number : L74999MH1934PLC002093



**EVEREST**

Everest Industries Limited  
Investor Presentation  
September 2016



This presentation and the accompanying slides (the “Presentation”), which have been prepared by Everest Industries Limited (the “Company”), have been prepared solely for information purposes and do not constitute any offer, recommendation or invitation to purchase or subscribe for any securities, and shall not form the basis or be relied on in connection with any contract or binding commitment whatsoever. No offering of securities of the Company will be made except by means of a statutory offering document containing detailed information about the Company.

This Presentation has been prepared by the Company based on information and data which the Company considers reliable, but the Company makes no representation or warranty, express or implied, whatsoever, and no reliance shall be placed on, the truth, accuracy, completeness, fairness and reasonableness of the contents of this Presentation. This Presentation may not be all inclusive and may not contain all of the information that you may consider material. Any liability in respect of the contents of, or any omission from, this Presentation is expressly excluded.

Certain matters discussed in this Presentation may contain statements regarding the Company’s market opportunity and business prospects that are individually and collectively forward-looking statements. Such forward-looking statements are not guarantees of future performance and are subject to known and unknown risks, uncertainties and assumptions that are difficult to predict. These risks and uncertainties include, but are not limited to, the performance of the Indian economy and of the economies of various international markets, the performance of the industry in India and world-wide, competition, the company’s ability to successfully implement its strategy, the Company’s future levels of growth and expansion, technological implementation, changes and advancements, changes in revenue, income or cash flows, the Company’s market preferences and its exposure to market risks, as well as other risks. The Company’s actual results, levels of activity, performance or achievements could differ materially and adversely from results expressed in or implied by this Presentation. The Company assumes no obligation to update any forward-looking information contained in this Presentation. Any forward-looking statements and projections made by third parties included in this Presentation are not adopted by the Company and the Company is not responsible for such third party statements and projections.

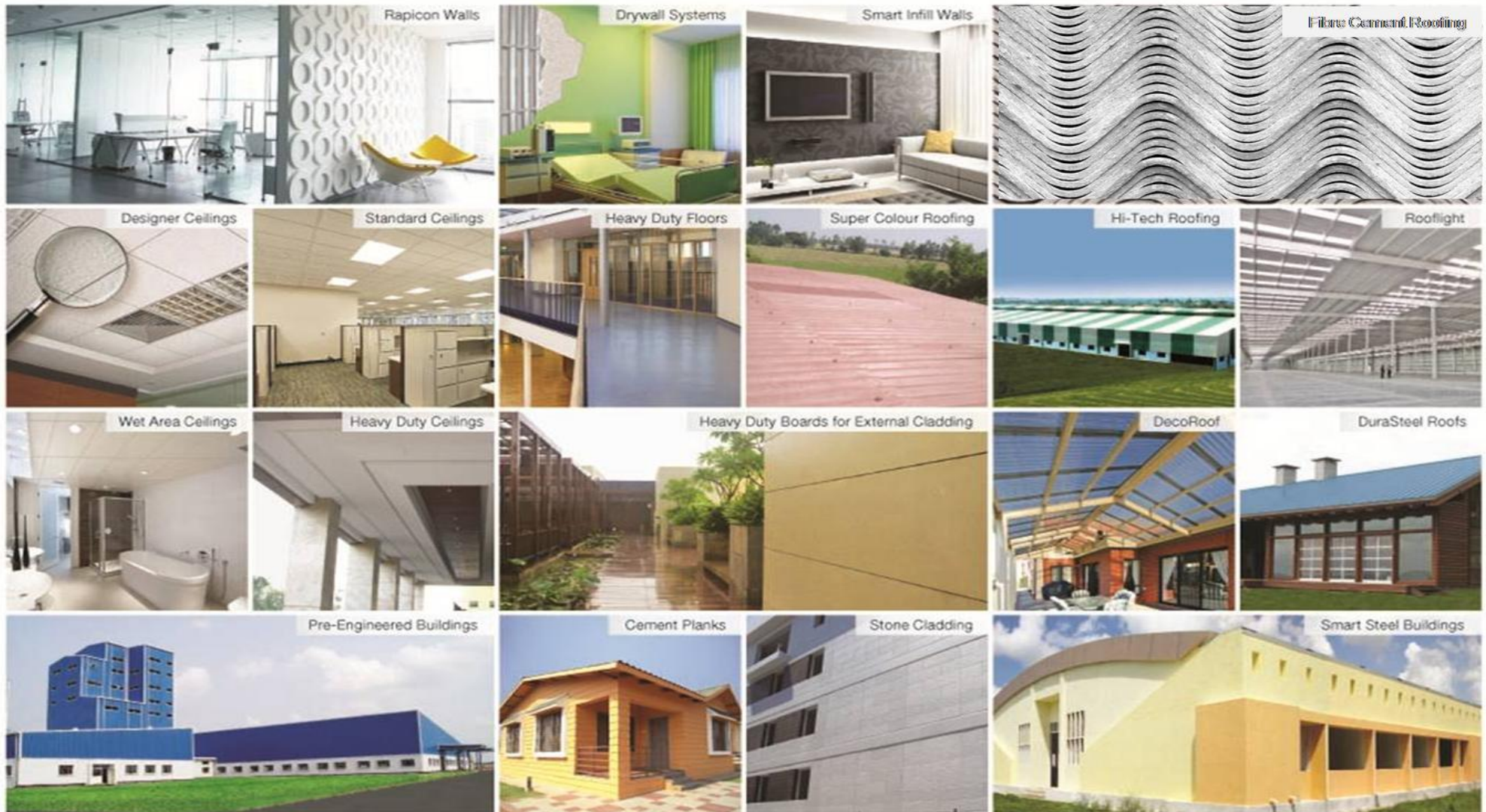
# Everest at a Glance



	Building Products		Pre Engineered Building
<b>Demand</b>	Rural and Semi-urban	Urban	Industrial, Logistics, Commercial, Institutional and Infrastructure
<b>Products</b>	Roofing Sheets & Accessories	Boards, Solid Wall Panels & Grids	Pre-engineered Steel Buildings Smart Steel Buildings
<b>Capacity</b>	865,000 MTPA		72,000 MTPA
<b>Manufacturing Facilities</b>	6 manufacturing plants located across India (7 roofing lines - including 1 dual use line, 3 Boards lines and 2 Solid Wall Panel lines)		3 manufacturing plants (2 steel building plants, 1 metal roofing plant )
<b>Distribution Network</b>	40 Sales Depot & over 6,000 Dealer Outlets Serving over 600 cities & 100,000 villages Export to over 25 countries		>1,600 Projects executed till date; Despatched 1 building every working day



# Everest at a Glance



## OUR RANGE OF PRODUCTS

Roofing | Walls | Ceilings | Cladding | Steel Buildings

1

**Everest - “The Untapped Potential”**

---

2

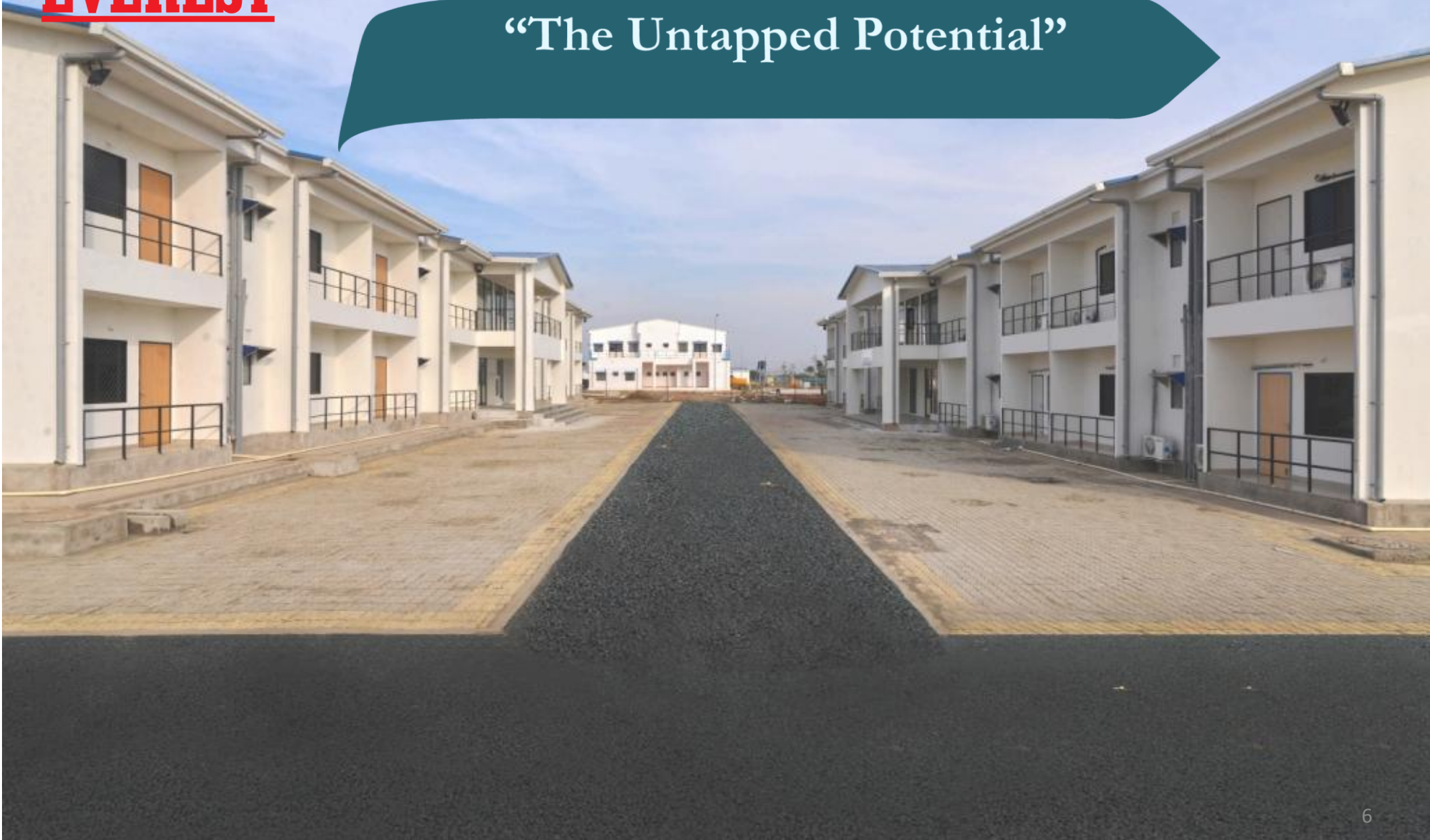
**Financial Performance and Analysis**

---





“The Untapped Potential”



## Everest on a growth trajectory

- Building Products - Undertaken project to enhance value offering business to our stakeholders
  - Emerging thought process from products to solutions entity
  - Successfully captured 10% volume in which the value added products have been launched
  - Product quality enhancement in terms of aesthetics and quality
  - Established new benchmarks in customer service levels such as
    - Reducing turn around time
    - Significantly reducing breakage claims cycle
  - In a stagnant environment, grew in high remunerative markets
  - Enhanced production by elimination of bottlenecks



- Boards and Panels - A prime focus area
  - High value add through variants and solutions offerings
  - Aggressive push to capture domestic market share
  - Target to sell entire production offerings in domestic market in coming years
  - Successful in tapping demand from select rural and tier II towns - Strategically positioned to tap enormous potential
  - Increasingly being used as a substitute for plywood

## Everest on a growth trajectory

- Pre Engineered Buildings
  - Everest currently has around 10% market share in an estimated Rs 6000 Cr Domestic market
  - Currently positioned as second largest player in the Industry
  - Domestic PEB market is estimated to grow at CAGR of over 15% over next 5 years
  - Steel Buildings provide few unique advantages over conventional construction such as
    - Converting uncertainty of site into certainty of factory
    - Offers wide usage base such as
      - Commercial space
      - Warehousing
      - Industrial expansions
    - Provide exceptional speed advantage and time saving in project completion

## Everest on a growth trajectory

- Smart Steel buildings emerging as one of most preferred alternative for buildings requiring fast execution
- Sectors which have seen demand growth are
  - Startup infrastructure
  - Projects requiring extremely fast execution speed
  - Meeting light weight requirements
  - Provided solutions in some of difficult terrains such as northern hills
- Projects implemented in sectors such as
  - Schools, Universities
  - Commercial establishments
  - Hospitals, Hospitality
  - Rooftop expansions



## Mau - Uttar Pradesh

- Mau one of 75 districts in UP has been generating demand of 100 MT per month
- Everest Boards have emerged as preferred choice material for doors
  - Collaboration between regional dealers and Everest marketing team has led to a unique product innovation
  - Supported by superior properties against moisture, termite and chemical resistance, our board has become a runaway success in doors application
  - Educating the dealers, contractors and local architects through different forums had led to the awareness which on back of product superiority has created a new segment for Everest boards

## Sangamner - Maharashtra

- A relatively unknown town of Maharashtra has started consuming 100 MT of boards per month
  - It all started with the efforts of Everest marketing team in collaboration with local dealer in educating the local contractors regarding superior board properties
  - Once the local contractors community and architects were made aware of resilient nature of Everest boards, it became preferred material of choice in local commercial buildings
  - Once the boards had the acceptance of local architect community, Everest panels also found way into the homes of local residents who were looking at modification, improvement in interiors

- PEB has a potential to grow manifold as the opportunities are immense. PEB Growth is primarily driven by
  - Industrial and Infrastructure growth - Investment of 100 Lakhs Crore planned during next 5 year
  - Conversion of existing civil construction to PEB ( Particularly Low rise commercial buildings)
- Conversion to PEB and new applications are expected to drive PEB growth for next 5-7 years
- at high rate.
- Currently “Speed” is the most important USP for PEB in India. Modern aesthetics and turn key
- solution are the other added advantage .
- ‘Pre Engineered Steel Buildings’ used to bring to mind the ‘Industrial’/ ‘Logistics’ Structures.
- Now no more - Newer applications have been implemented by Everest to include Corporate
- Offices/ IT Parks to name a few. A whole lot of new applications are emerging.

## Key Features (Spice Board)

- Its a Quality evaluation Laboratory cum training center for
  - Central Govt. of India at Navi Mumbai
  - Building area: Total 44684 sqft. ( Basement + 4 floor)
  - Above Basement, all 3 floors with full Mezzanine & deck concrete slab
  - Curved roof with front Glazing & ACP panel
  - Total Tonnage= 318.27 MT
  
- **Major Scope of EIL**
  - Civil Foundations , RCC Basement Work With PEB structure
  - All Internal walls , Partitions with all finishing & False ceiling work
  - All Electrical work From substations to Transformer (High Side) & all Low side work with all fixtures
  - Plumbing Work with fittings
  - Fire fighting work with sprinkler systems
  - VRV HVAC system supply & installation



# New applications PEB

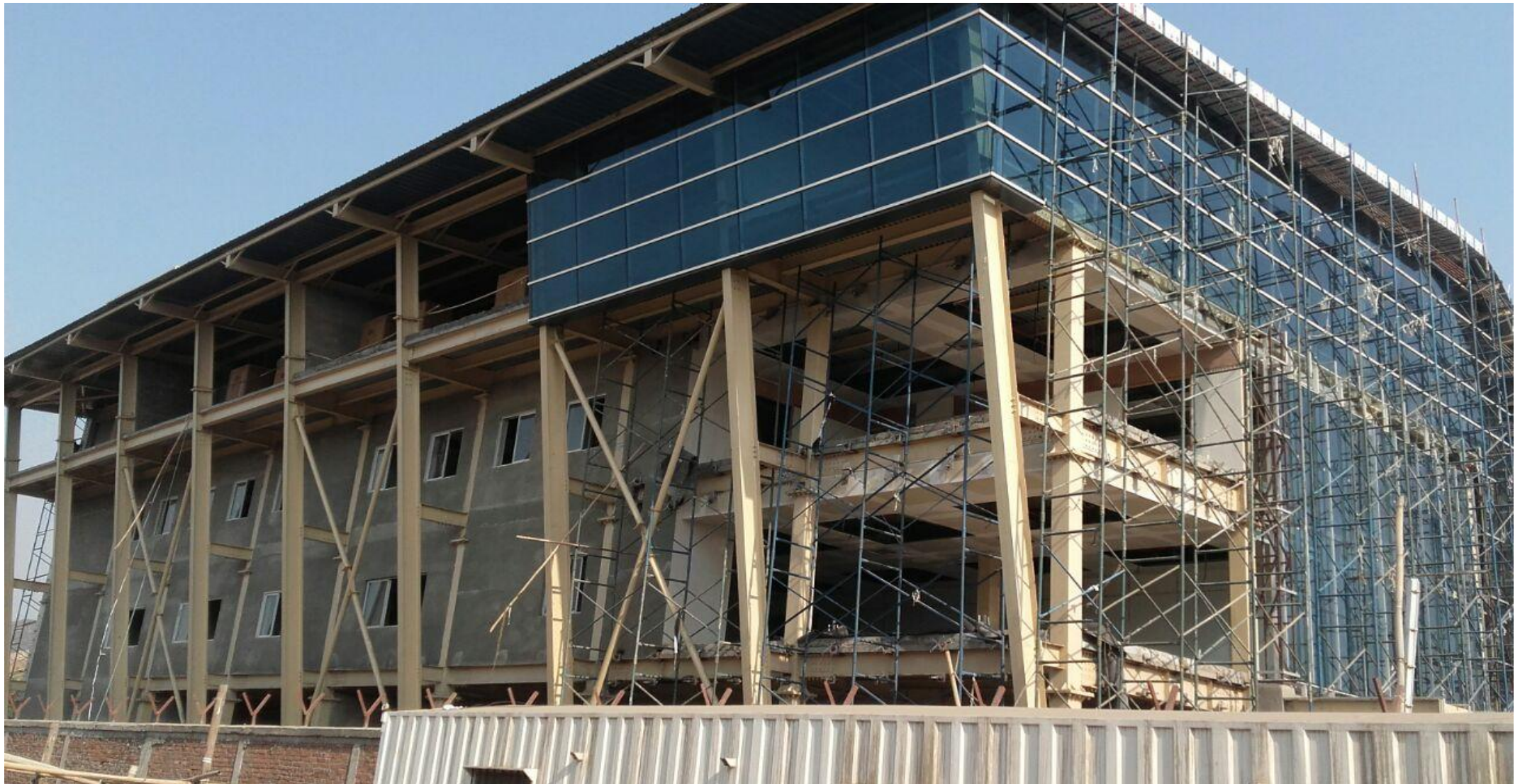
- Corporate office Spice Board Mumbai





# New applications PEB

- Corporate office Spice Board Mumbai





# New applications PEB

- Corporate office Spice Board Mumbai





## Key Features (IT Park-3, HCL IT City)

- Building area: Total 2339 Sqm. ( 02 buildings)
  
- Total Tonnage= 2158 MT
- 
- Ground + 2 floors with full Mezzanine & deck concrete slab
- 
- Flat roof with parapet wall and four sides Glazing with ACP
- Panel
  
- Major Scope of EIL:
  - a) Civil Foundations With PEB structure
  - b) All Internal walls , Partitions including Finishing Work
  - c) Plumbing Work
  - d) Fire fighting work with sprinkler systems

# New applications PEB

- IT Park , HCL IT City , Lucknow





# New applications PEB

- IT Park , HCL IT City , Lucknow





## A House made of Steel - May be...

Some of most challenging projects undertaken by Everest Steel Buildings Solutions

- OPGC - Project Highlights

- Location : Jharsuguda, Odhisha
- Project Area : 10,7134 sq.ft.
- Type of Building : G+1 Structure. Construction of Housing Colonies for Project Management Team
- Key Features : Setting up an Housing colony with all recreational facilities with in a time span of 9 months
- Challenges : Extremely remote location with limited access & Stringent project timelines





## A Housing Cluster in 'Not so accessible' Hilly Terrain...

Some of most challenging projects undertaken by Everest Steel Buildings Solutions

- Bijoli Holi Chamba, Himachal Pradesh
  - Location : Bijoli Holi Chamba, Himachal Pradesh
  - Project Area : 13,961 sq.ft.
  - Type of Building : G+2 Structure for Staff Accommodation for Families
  - Key Features : Stepped construction on hill-top. Minimal use of electricity & water
  - Challenges : Hilly terrain with no proper access. It is ongoing project.



# GMR Bijoli Holi Hydro Power Pvt. Ltd.







## Project Highlights

Project Location : Roha, Maharashtra

Project Area : 70,000 sqft

Project Duration : 150 days

Key Features : Challenging octagonal geometry of 20 dormitory completed in stipulated time frame from scratch to finish









## Project Highlights

Location : Gurugram, Haryana

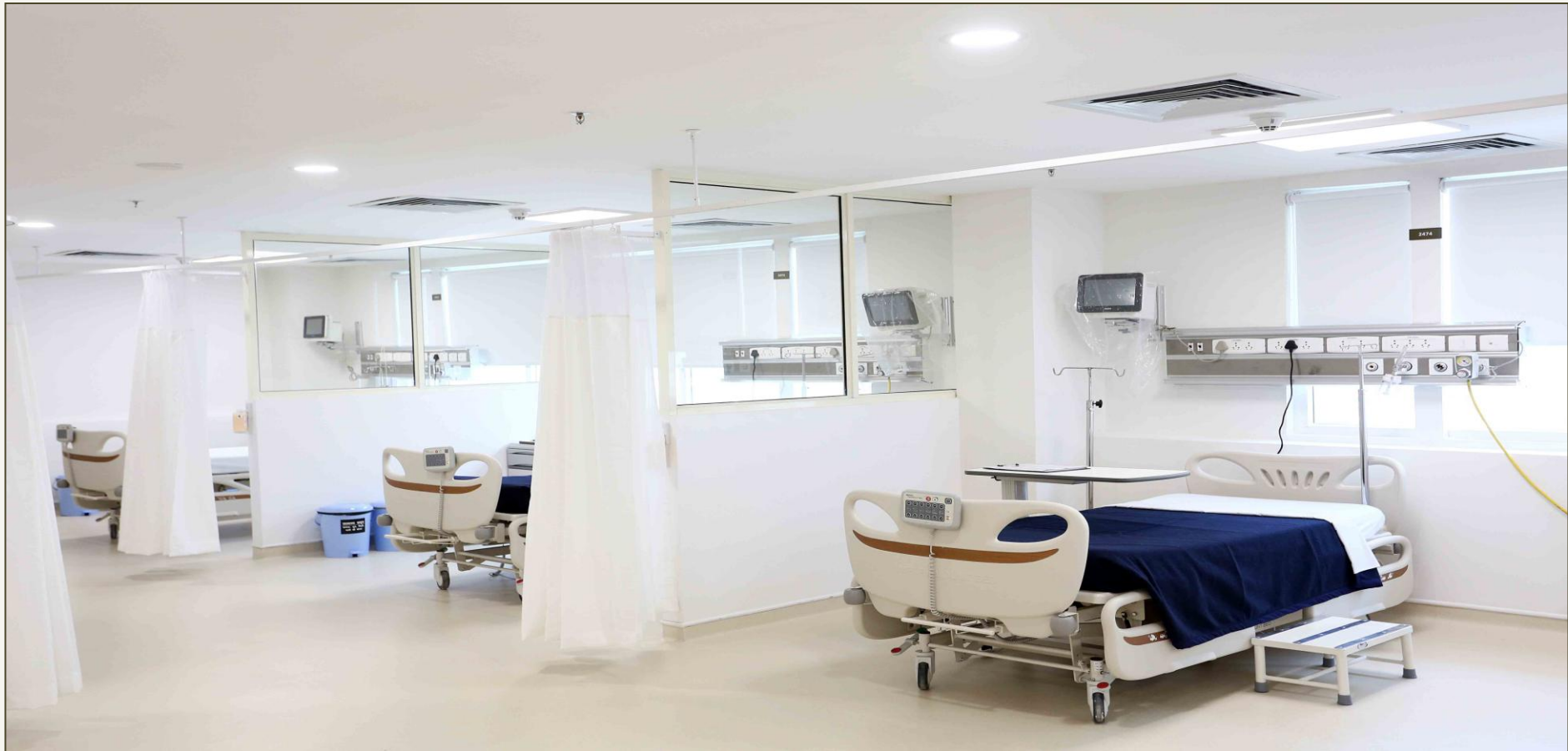
Rooftop Area : 14,445 sq ft

Completion Period : 96 Days

Scope of Work : Designing the sophisticated structure, Finishing of the building as per hospital requirements

Challenges : Running hospital and stringent safety norms

# Smart Steel Roof top Extension



**Project of Artemis Hospital -Rooftop Extension at Gurgaon, Haryana**

**Size : 1,324 sq meter**

# Smart Steel Roof top Extension



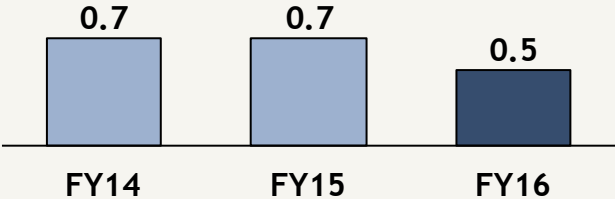


The logo for Everest, featuring the word "EVEREST" in a bold, red, sans-serif font. The letters are contained within a red outline that forms a stylized mountain peak or a house-like shape above the text.A dark teal arrow-shaped banner pointing to the right, containing the text "Financial Performance & Analysis" in a white, serif font. The banner is overlaid on a photograph of a large industrial warehouse interior with a complex steel truss ceiling and numerous hanging lights.

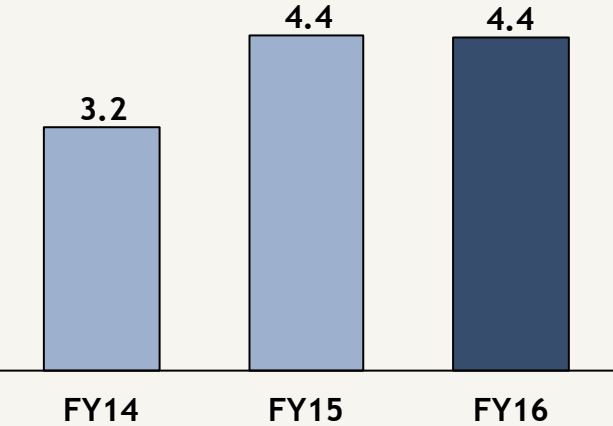
# Strong Balance Sheet...



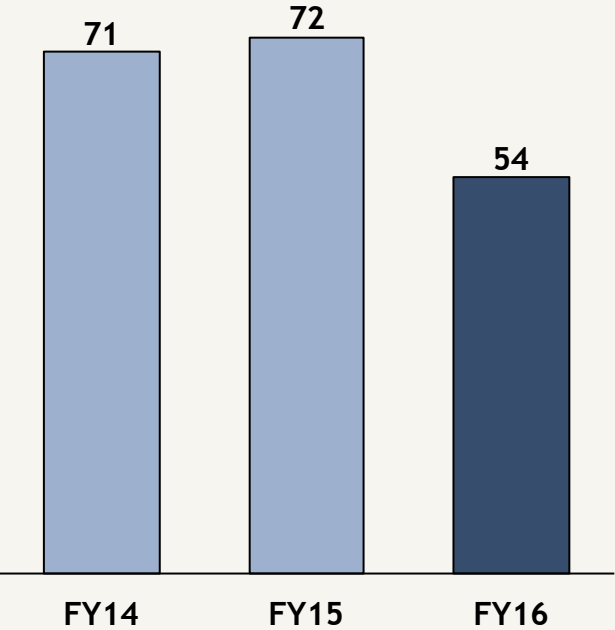
Net Debt / Equity (x)



Interest Coverage Ratio



Working Capital Days



**Improvement in leverage position despite CAPEX in last 3 years**

Net Debt/Equity : (Total Debt-cash) / Networth

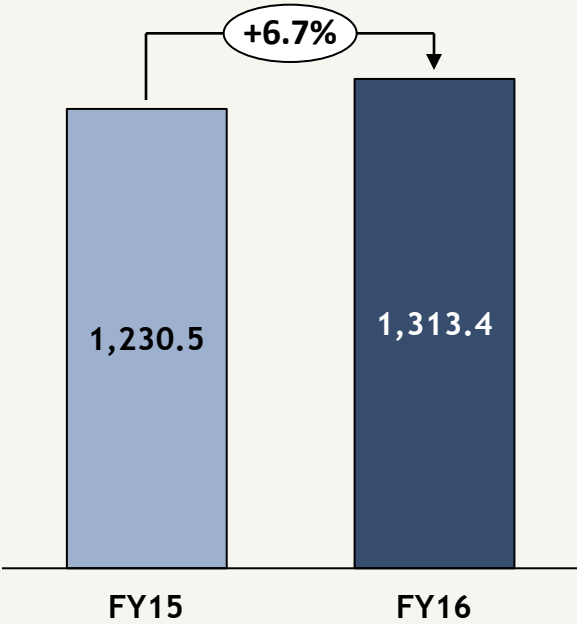
Interest Coverage : EBITDA / Interest

Working Capital Days :  
Debtor Days + Inventory Days - Payable Days

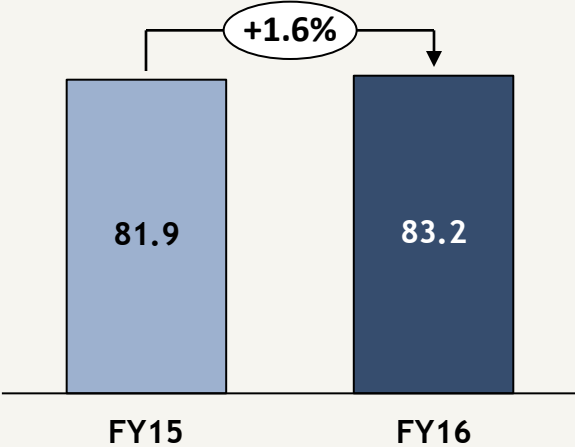
# Annual Financial Highlights



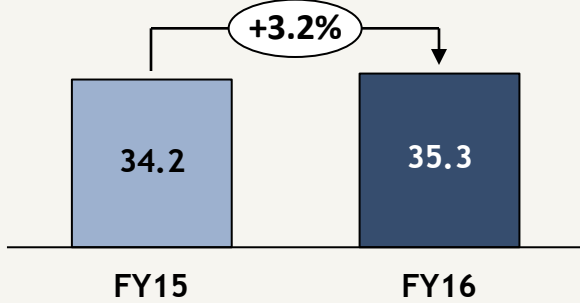
Revenues (Rs Cr)



EBITDA (Rs Cr)



PAT (Rs Cr)

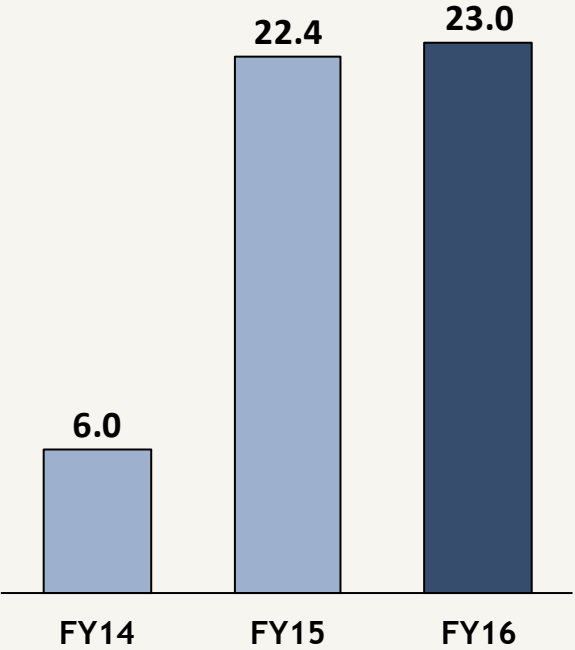




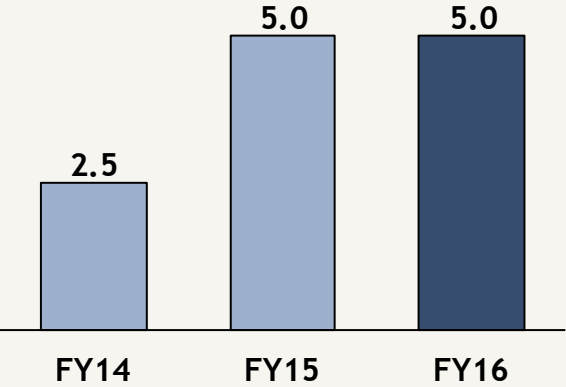
# Consistent Dividend Paying Company



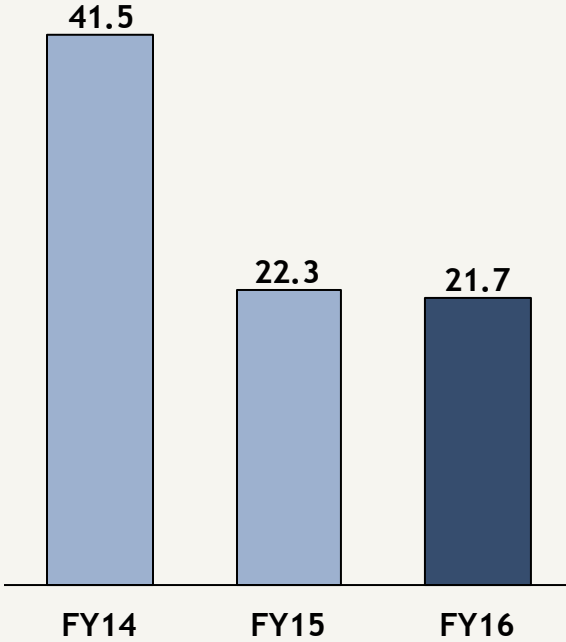
Earning Per Share (EPS)



Dividend Per Share (DPS)



Payout (%)

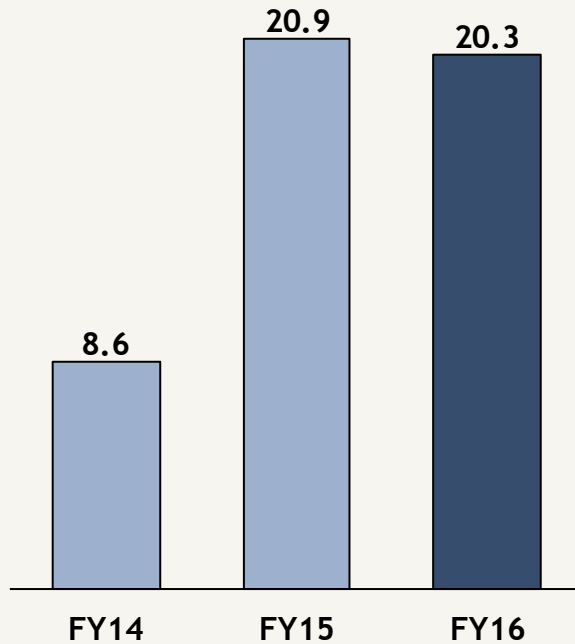


**Board recommended Dividend of s. 5 per equity share for FY16**

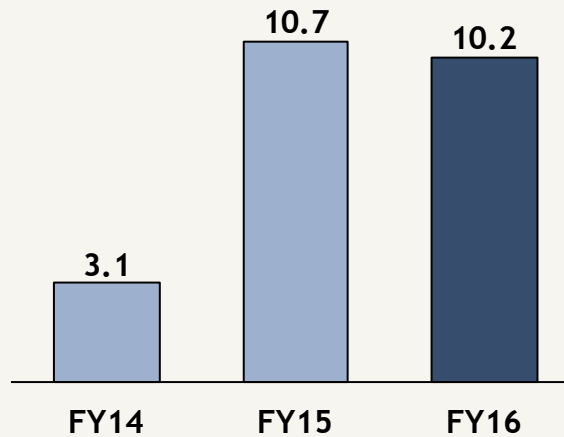
# With improving Return Ratios



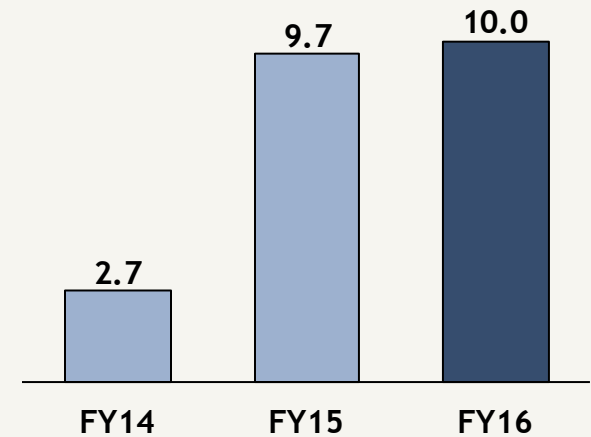
Return on Capital Employed (%)



Return on Equity (%)



Return on Assets (%)



RoCE : EBIT / Capital Employed

RoE : PAT / Networth

RoA : PAT / Fixed Assets incl. CWIP

For further information, please contact:



Company :	Investor Relations Advisors :
<p data-bbox="400 675 1101 746">Everest Industries Ltd. CIN: L74999MH1934PLC002093</p> <p data-bbox="400 803 1101 875">Mr. Rakesh Gupta <a href="mailto:rakeshgupta@everestind.com">rakeshgupta@everestind.com</a></p> <p data-bbox="400 982 1101 1018"><a href="http://www.everestind.com">www.everestind.com</a></p>	<p data-bbox="1101 675 1751 746">Stellar IR Advisors Pvt. Ltd. CIN: U74900MH2014PTC259212</p> <p data-bbox="1101 803 1751 925">Mr. Gaurang Vasani / Mr. Vikash Verma <a href="mailto:vgaurang@stellar-ir.com">vgaurang@stellar-ir.com</a> <a href="mailto:vikash.verma@stellar-ir.com">vikash.verma@stellar-ir.com</a></p> <p data-bbox="1101 982 1751 1018"><a href="http://www.stellar-ir.com">www.stellar-ir.com</a></p>