

May 30, 2017

<b>The BSE Ltd.</b> Phiroze Jeejeebhoy Towers, Dalal Street, Mumbai – 400001 Phones: 022-2272 3121, 2037, 2041 Fax: +91-22-22721919 <a href="mailto:corp.relations@bseindia.com">corp.relations@bseindia.com</a> <b>Security Code No.: 532286</b>	<b>The National Stock Exchange of India Ltd.</b> Exchange Plaza, 5 <sup>th</sup> Floor, C - 1, Block G, Bandra – Kurla Complex, Bandra (E), Mumbai – 400051 Maharashtra Phones: 022-2659 8237, 8238, 8347, 8348 Fax No: +91-22-26598120 <a href="mailto:cm1ist@nse.co.in">cm1ist@nse.co.in</a> <b>Security Code No.: JINDALSTEL</b>
--	--

**Subject: Intimation under Regulation 30(6) of the Securities and Exchange Board of India (Listing Obligations and Disclosure Requirements) Regulations, 2015**

Dear Sir(s),

Please find enclosed herewith Investor Presentation for the information of the Stakeholders.

Submitted for your kind information and records please.

Kindly host the same on your website.

Thanking You.

Sincerely,

For **Jindal Steel & Power Limited**

  
**Rajesh Bhatia**  
Chief Financial Officer



**Encl:** as above



# *Jindal Steel and Power Ltd*

## *Investor Presentation*

4Q FY17 (May' 17)



<i>S No.</i>	<i>Content</i>	<i>Slides</i>
<b>1</b>	<b><i>The Company</i></b>	<b>3-11</b>
<b>2</b>	<b><i>Focus for FY2016-17</i></b>	<b>12</b>
<b>3</b>	<b><i>Overview &amp; Business Segments</i></b>	<b>13-22</b>
<b>4</b>	<b><i>Power Business</i></b>	<b>23-29</b>
<b>5</b>	<b><i>Global Ventures</i></b>	<b>30-39</b>
<b>6</b>	<b><i>Financials &amp; Operational Highlights</i></b>	<b>40-45</b>
<b>7</b>	<b><i>Key Initiatives &amp; Projects Update</i></b>	<b>46-50</b>
<b>8</b>	<b><i>Facilities at a glance</i></b>	<b>51-66</b>
<b>9</b>	<b><i>CSR Initiatives</i></b>	<b>67-71</b>
<b>10</b>	<b><i>Rewards &amp; Recognitions</i></b>	<b>72-74</b>
<b>11</b>	<b><i>Contact Us</i></b>	<b>75</b>

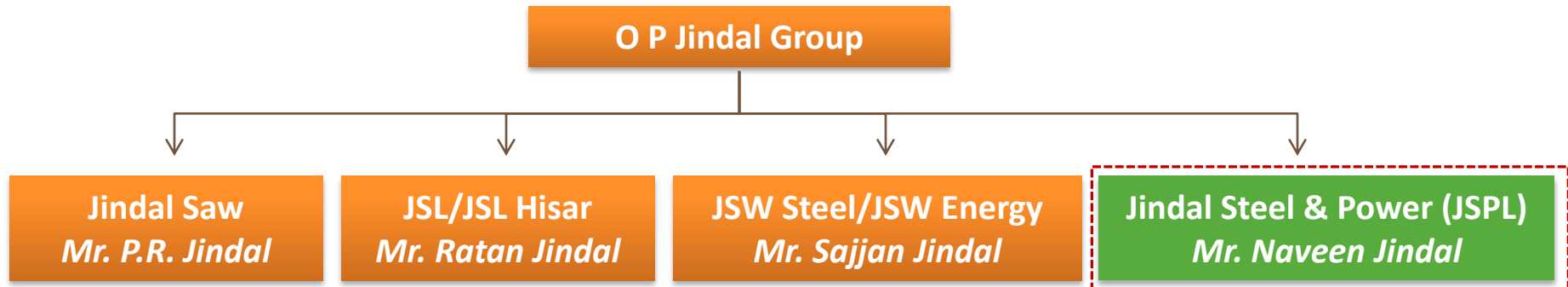
# *Jindal Steel & Power Limited*

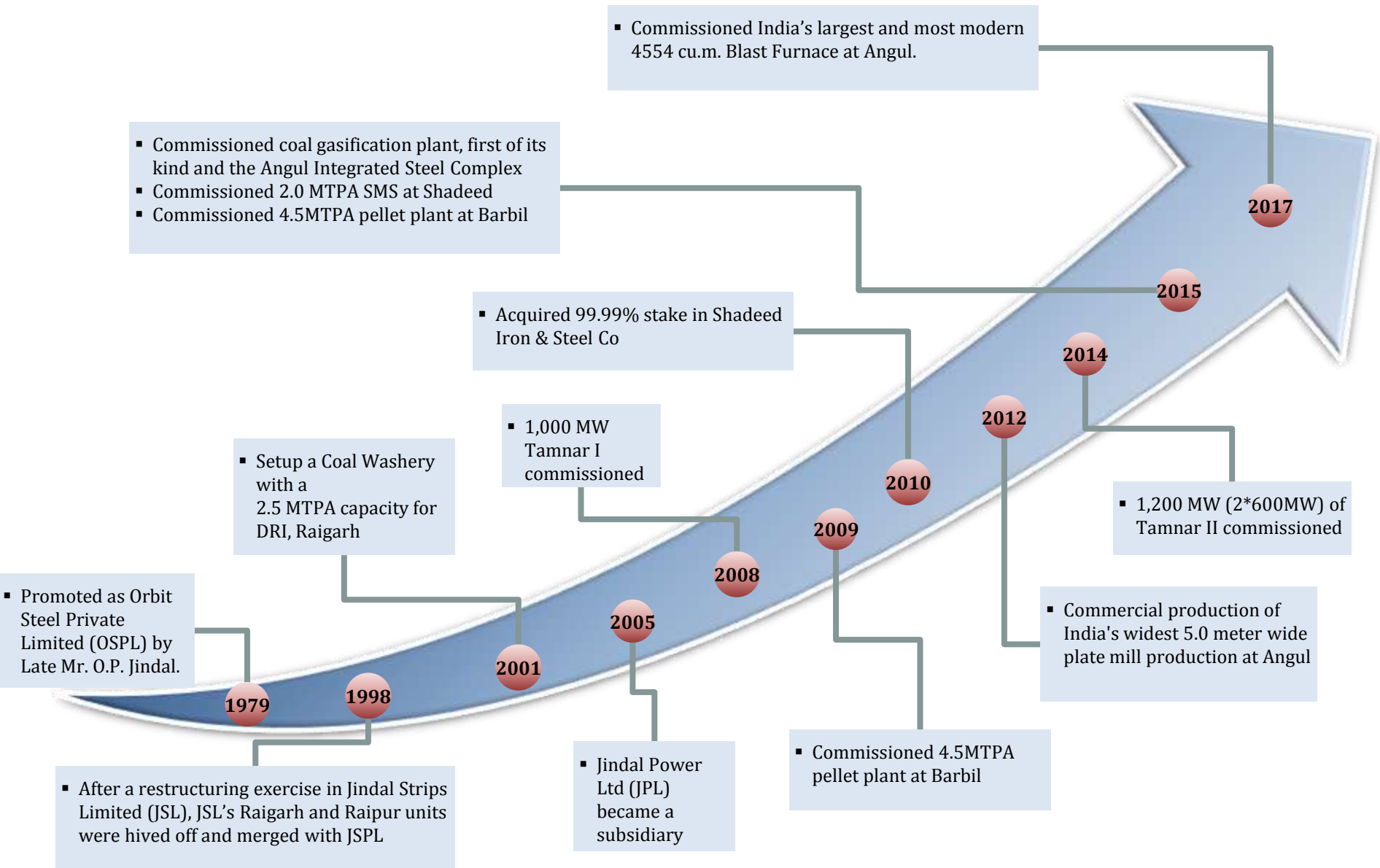
## *Building the Nation of Our Dreams*



*Aerial View of Raigarh Plant*

# Ownership Structure - O P Jindal Group





# JSPL - Formidable Steel & Power player



✓ Capex cycle completed – on path to achieve multifold earnings growth



✓ Projects at strategic locations – in proximity to raw materials, end markets and evacuation infrastructure



✓ A comprehensive diversified long products portfolio with several unique high value added products



✓ Amongst the lowest cost producers of steel and power in India

✓ 3,400 MW IPPs set up at extremely competitive project cost

## *JSPL is at the cusp of turnaround & phenomenal growth ..*



Profits set to increase with increase in volumes



Debt reduction to be the key focus with higher cash flows



Margins set to expand with

- ◆ Change in product mix to “Value added” & “Premium” products &
- ◆ Amortization of costs over higher volumes



# Experienced Board Of Directors



**Ravi Uppal**  
*MD & Group CEO*

- Experience: >36 years
- Qualification: MBA (IIM – A)



**Naveen Jindal**  
*Chairman*

- Experience: 21 years
- Qualification: MBA (University of Texas)



**Shalu Jindal**  
*Non Executive Director*



**R.V. Shahi**  
*Independent Director*

- Experience: >33 years
- Qualification: MBA
- Former Power Secretary



**Arun Kumar Purwar**  
*Independent Director*

- Experience: >30 years
- Qualification: M.Com
- Former CMD, SBI



**Arun Kumar**  
*Independent Director*

- Experience: 38 years
- Qualification: MSc



**Hardip Singh Wirk**  
*Independent Director*

- Experience: >11 years
- Qualification: LLB



**Sudershan Kumar Garg**  
*Independent Director*

- Experience: 39 years
- Qualification: Bcom & CA



**Dinesh Kumar Saraogi**  
*Wholetime Director*

- Experience: 32 years
- Qualification: Mechanical Engineering



**Rajeev Bhadauria**  
*Whole time director*

- Experience: 28
- Qualification: LLB



**Deepak Sood**  
*Nominee director*



**Anjan Barua**  
*Nominee Director*



**Kuldip Chander Sood**  
*Independent Director*



**Dr Amar Singh**  
*Independent Director*

# ...& Best in Class Management



**Anand Goel**  
*Chief Advisor*

- Experience:  
>36 years



**Rajesh Bhatia**  
*CFO*

- Experience:  
>25 years



**VK Mehta**  
*Director, S&M*

- Experience:  
>36 years)



**N.A. Ansari**  
*CEO, Oman*

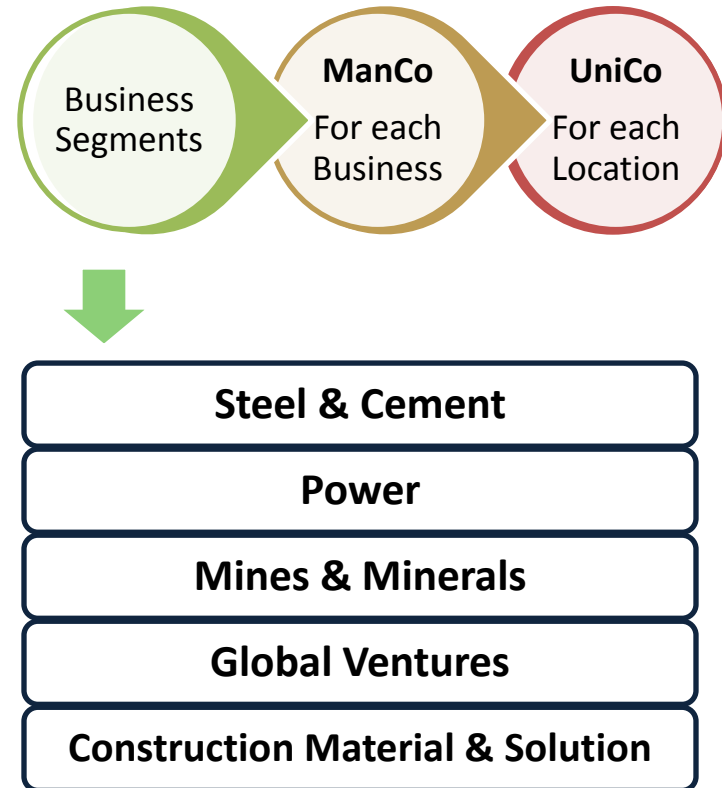
- Experience:  
>38 years.

# Moving Towards Plural Leadership

## Strategic Governance Structure



## Operational Governance Structure

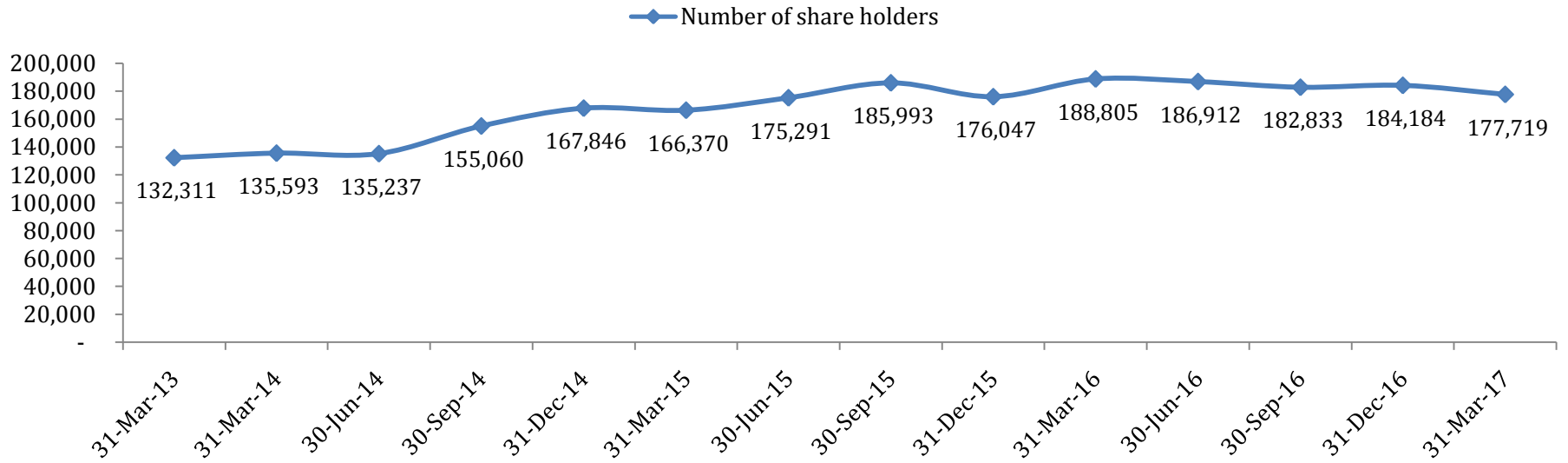


## Implementation of Strategic & Operational Governance Structure

# Shareholding of JSPL from FY13

	31-Mar-13	31-Mar-14	31-Mar-15	30-Jun-15	30-Sep-15	31-Dec-15	31-Mar-16	30-Jun-16	30-Sep-16	31-Dec-16	31-Mar-17
Promoters	59.13%	60.41%	61.29%	61.34%	61.89%	61.89%	61.89%	61.89%	61.89%	61.89%	61.89%
Institutional Investors*	27.45%	26.45%	22.66%	21.91%	19.53%	22.35%	21.08%	21.33%	20.00%	19.39%	19.57%
Public and other share holding	13.42%	13.14%	16.05%	16.75%	18.58%	15.76%	17.03%	16.77%	18.11%	18.72%	18.54%
<b>Total</b>	<b>100.00%</b>	<b>100.00%</b>	<b>100.00%</b>	<b>100.00%</b>	<b>100.00%</b>	<b>100.00%</b>	<b>100.00%</b>	<b>100.00%</b>	<b>100.00%</b>	<b>100.00%</b>	<b>100.00%</b>
Number of share holders	1,32,311	1,35,593	166,370	175,291	185,993	176,047	188,805	186,912	182,833	184,184	177,719

### Number of share holders



# *Focus for FY18*

## **Capacity Utilization**

- Ensure Full Utilization of Steel Capacity
- Increase Operational efficiency of all processes
- Transition of product mix – More “ Value Added” & “ Premium” products
- Commission & Commercial production from Blast Furnace in Angul
- Optimally utilize power capacities to generate higher operating profits

## **Financial Prudence**

- Cost Savings & Incremental Operating Profits by Completion of Angul Phase IB
- Substantially increase margins in Oman - utilize full Rebar capacity
- Further reduction in Working Capital
- Fixed Cost Reduction

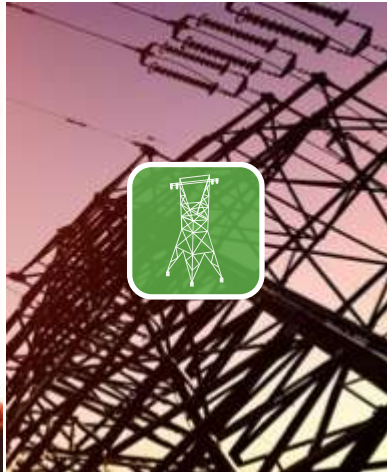
Steel

Power

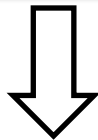
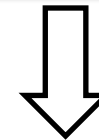
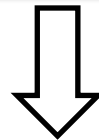
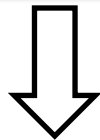
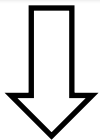
Mines & Minerals

Global Ventures

Construction Material & Solution



## Current Capacities – Domestic & Global



5.1 MTPA Steel\*

IPP – 3400 MW\*\*  
CPP – 1634 MW

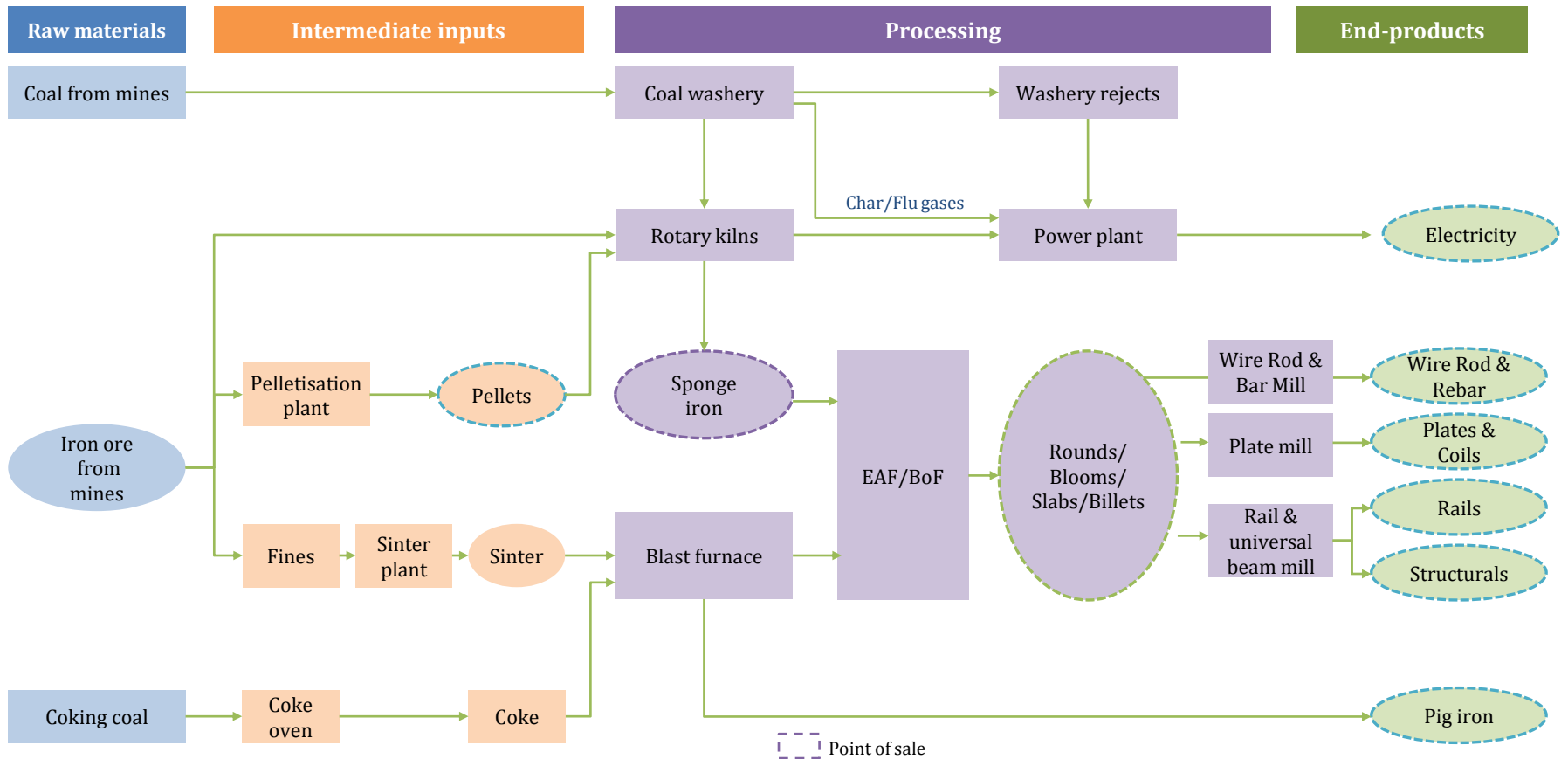
3.11 MTPA\*

2 MTPA Steel  
& Mines

Cement  
Road solutions  
LGS

• Domestic  
\*\* 1000 MW Divestment announced

# Integrated Operations with multiple point of sale



Multiple sale points across steel value chain

# Steel Capacities across Life Cycle

## Iron Making (6.75 MTPA)

DRI 3.12 MTPA

BF 2.13 MTPA\*

HBI 1.50 MTPA

## Liquid Steel (7.10 MTPA)

SMS 7.10 MTPA\*

## Finished Steel (6.65 MTPA)

WRM 0.60 MTPA

RUBM 0.75 MTPA

MLSM 0.70 MTPA

Plate Mill 2.20 MTPA

BRM 2.4 MTPA

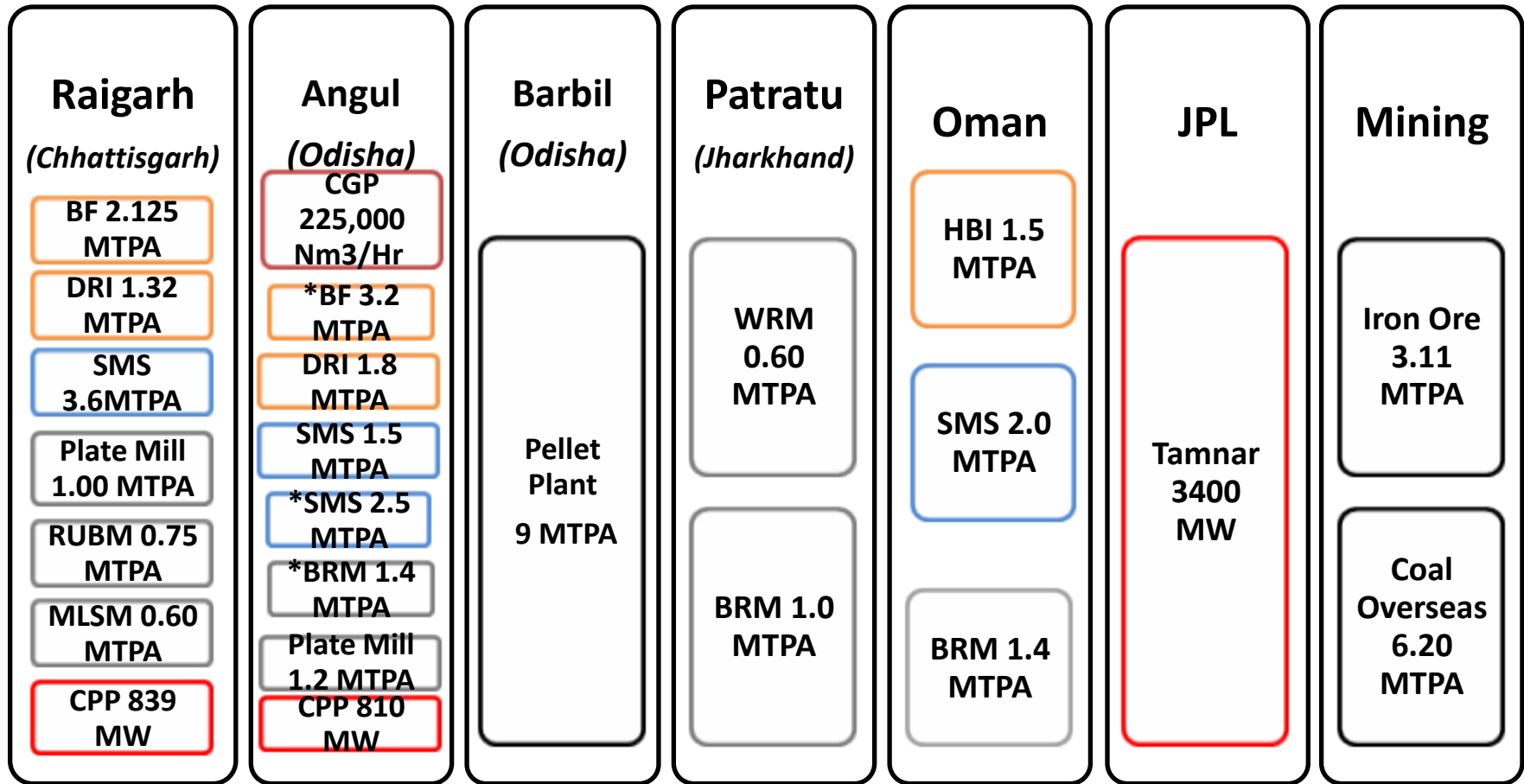
\*BF in Angul 3.25 MTPA - To be commissioned

\*BRM in Angul 1.4 MTPA - To be commissioned

\*BoF in Angul 2.5 MTPA - To be commissioned



# Integrated & Diversified operations of scale



Power
  Hot Metal
  Liquid Steel
  Finished Steel

*\*To be commissioned*

## LONG PRODUCTS



### Rail

**Track Rail:** IRS 52, UIC 60(E1&E2), UIC 54E  
**Crane Rails:** CR 80, CR 100



### Parallel Flange Beams & Columns

**Sections:** UB, UC, NPB, WPB, IPE and HE series.  
**Size range:** 180m to 900mm



### Channel

**Sizes:** 75mm to 400mm



### Angles

**Sizes:** 50mm to 250mm



### Wire Rods

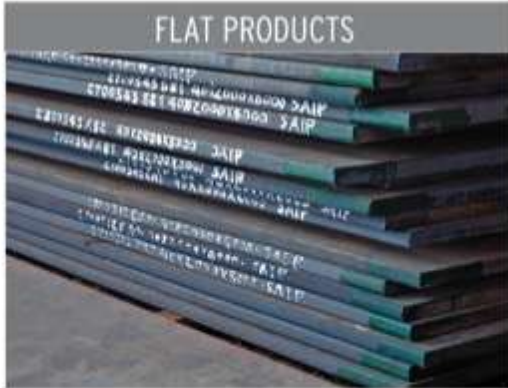
**Grades:** MS, MC & HC, EQ, Boron and other Alloy Steel  
**Size range:** 5.2mm, 5.5mm to 22mm



### Jindal Panther TMT Rebars

**Grades:** 500, 500D, 550, 550D, 600 and CRS  
**Size range:** 6mm to 40mm, 45°, 50°

# JISPL Product Range



**Plates**  
**Width:** 1500mm to 4900mm  
**Thickness:** 5mm to 150mm



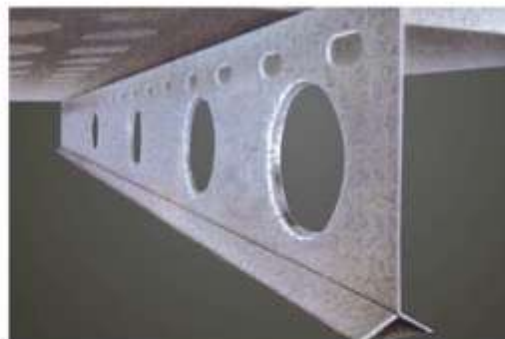
**Fabricated Structures**  
**Sections:** H-type Beam, I-type Beams, Box Sections and Star Couiums  
**Sections:** Depth: 350mm - 3000mm, Flange Width: 250mm - 1000mm, Length: 3 to 18 meters



**Cut & Bend**  
 Customized and Ready to Use  
 TMT Rebars



**Coils**  
**Width:** 1500mm to 2500mm  
**Thickness:** 5mm to 25mm



**Speed Floor**  
**Available Joist Depth:** 200mm, 250mm, 300mm, 400mm



**Welded Wire Mesh**  
**Width:** 1200mm to 3200mm  
**Length:** 2000mm to 6000mm



- *Developed steel grades for various critical applications like boilers, ship building, petroleum pipes, high strength grades for automotive and earth movers, structural steel for oil exploration platforms, grades for making warships , ballistic launch applications and bullet proof vehicles, stainless steel low thickness plates for nuclear application*

# Value Added Products – help in higher Turnover & EBITDA margins



Cement



Cut & Bend



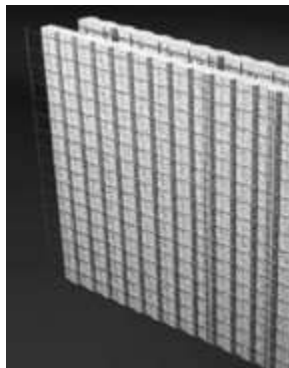
Welded Mesh



Speed Floor



LGS



EPS Panels



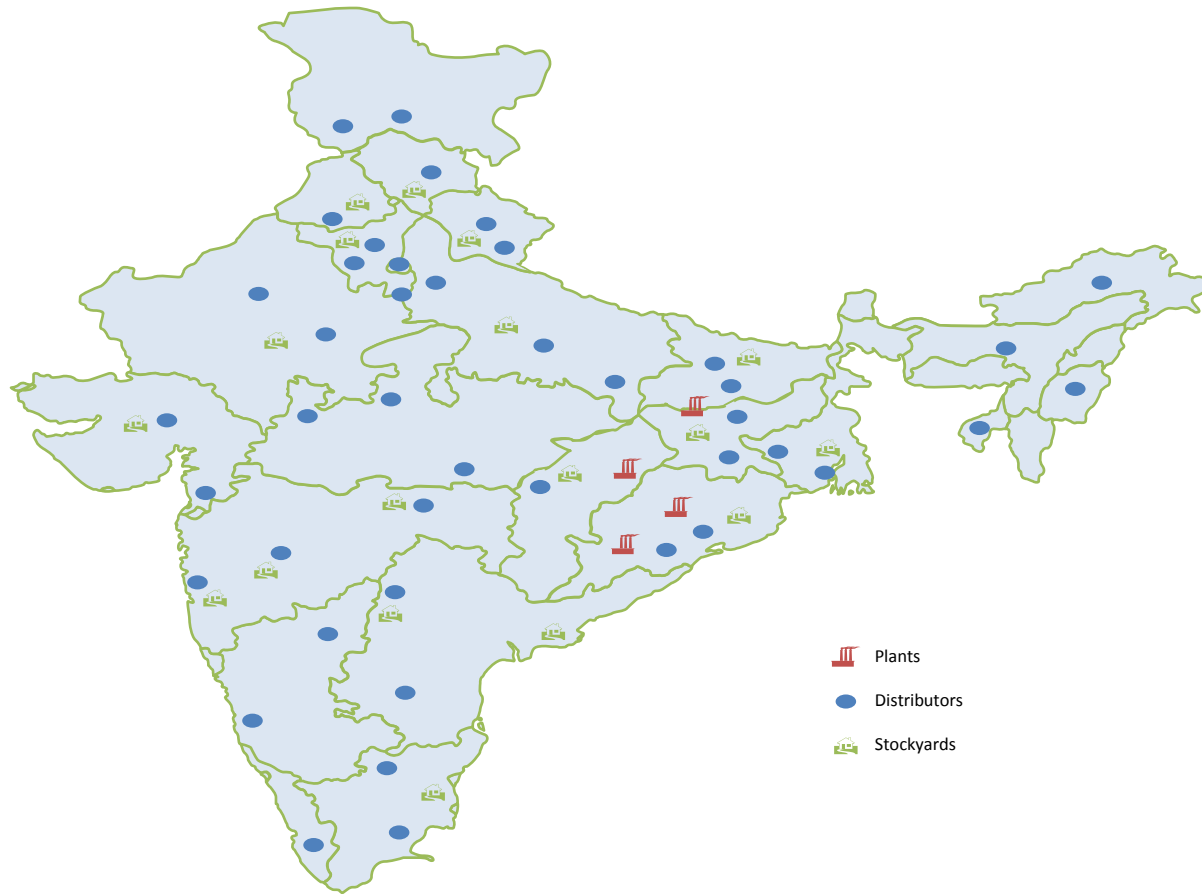
Road Stabilizer



Bricks & Pavers



LWA



Pan India presence with multiple customer touch points


Customer base comprising large public and private sector clients

# ***POWER BUSINESS***







## Independent Power Projects (IPP)

Project	Capacity (MW)	Fuel	Configuration	Status
Tamnar 1 <sup>(a)</sup> *	1,000	Coal	4x250 MW	Operational
Tamnar 2 <sup>(a)</sup>	2,400	Coal	4x600 MW	Operational

## Captive power projects (within JSPL)

Project	Capacity (MW)	Fuel	Configuration	Status
DCPP, Raigarh	540	Coal	4x135 MW	Operational
JSPL, Raigarh	299	Coal & waste heat	2x25 MW & 40 MW (Waste heat) 2x55 MW 3x25 MW 24 MW	Operational
Angul, Odisha	810	Coal	6 x135 MW	Operational

One of the largest & cost-efficient thermal portfolios in India



***96.43% subsidiary of JSPL***

**EUP - I**

**1000MW (4 X 250)**




**EUP - II**

**1200MW (2 X 600)**

**EUP - III**

**1200MW (2 X 600)**

# Key Contractual Arrangements for JPL

		Tamnar-I, 1,000 MW (EUP I)	Tamnar-II - 1,200 MW (EUP II)	Tamnar-II - 1,200 MW (EUP III)
FSA		<ul style="list-style-type: none"> <li>Coal sourced through – market purchase and e-auction</li> <li>Tara coal block - Subjudice</li> </ul>	<ul style="list-style-type: none"> <li>Long term linkage from Mahanadi Coal Limited (MCL) and South Eastern Coalfields Limited (SECL)</li> </ul>	<ul style="list-style-type: none"> <li>Market purchase and e-auction</li> <li>Gare IV/2&amp;3 - Subjudice</li> </ul>
PPA		<ul style="list-style-type: none"> <li>TNEB – 200 MW</li> <li>Bilateral/short term/merchant</li> </ul>	<ul style="list-style-type: none"> <li>TNEB – 400MW</li> <li>CSEB – 60MW</li> <li>KSEB – 200MW</li> <li>KSEB – 150MW</li> </ul>	<ul style="list-style-type: none"> <li>CSEB – 60MW</li> </ul>
Evacuation		<ul style="list-style-type: none"> <li>258km transmission line from plant to national grid</li> </ul>	<ul style="list-style-type: none"> <li>Open access against PPAs</li> </ul>	<ul style="list-style-type: none"> <li>Open access to be finalised against PPAs</li> </ul>

Raw materials, transmission & PPAs in place for achieving higher PLF

# PPA Arrangements

Project	Buyer	Type	Period		Quantum (MW)
			From	To	
Tamnar II (Phase 1)	Tamil Nadu	Long Term	Feb-14	Sep-28	400
Tamnar I		Medium Term	Sep-12	Aug-17	200
Tamnar II (Phase 1)	KSEB	Long Term	Jun-16	May-41	200
Tamnar II (Phase 1)		Long Term	Oct-17	Sep-42	150
Tamnar II (Phase 1)		Long Term	After commercial operation of Unit and for complete life of plant		60
Tamnar II (Phase 2)	Chhattisgarh	Long Term	After commercial operation of Unit and for complete life of plant		60

**Over 30% of total capacity tied up \***

Particulars	Net Sales (Rs. Cr.)	PAT (Rs. Cr.)	Generation (MU)
Year 2016-17	3,119	(668)	9,176
Year 2015-16	2,997	(766)	9,542
Year 2014-15	3,228	(171)	10636
Year 2013-14	2,457	1,107	8282
Year 2012-13	2,510	1,113	7973



# JPL- Snapshot of Key Financials

(Figures in INR Crores)

Particulars	Q4FY17	Q4FY16	Q3FY17	%YoY	%QoQ
Net Sales	863	674	854	+28%	+1%
EBITDA	382	105	302	+263%	+27%
EBITDA %	44%	16%	35%		
Depreciation + Amortization	376	647	385	-42%	-2%
Interest	235	133	200	+77%	+18%
Profit/(Loss) Before Tax	(134)	(471)	(182)	+71%	+26%
Profit/(Loss) After Tax	(84)	(406)	(162)	+79%	+48%
Cash Profit	241	210	203	+15%	+19%
Generation (MU)	2,336	2,357	2,356	-1%	-1%

Particulars	FY17	FY16	%YoY
Net Sales	3,119	2,997	+4%
EBITDA	1,048	635	+65%
EBITDA %	34%	21%	
Depreciation + Amortization	1,436	1514	-5%
Interest	789	451	+75%
Profit/(Loss) Before Tax	(780)	(820)	+5%
Profit/(Loss) After Tax	(668)	(766)	+13%
Cash Profit	656	706	-7%
Generation (MU)	9,176	9,542	-4%

# *GLOBAL VENTURES*



# Summary of International Operations

## Shadeed, Oman

- 1.5 MT HBI, 2 MT SMS Plant & 1.4 MT Rebar Mill – an Integrated Steel Plant

## Mozambique, Africa

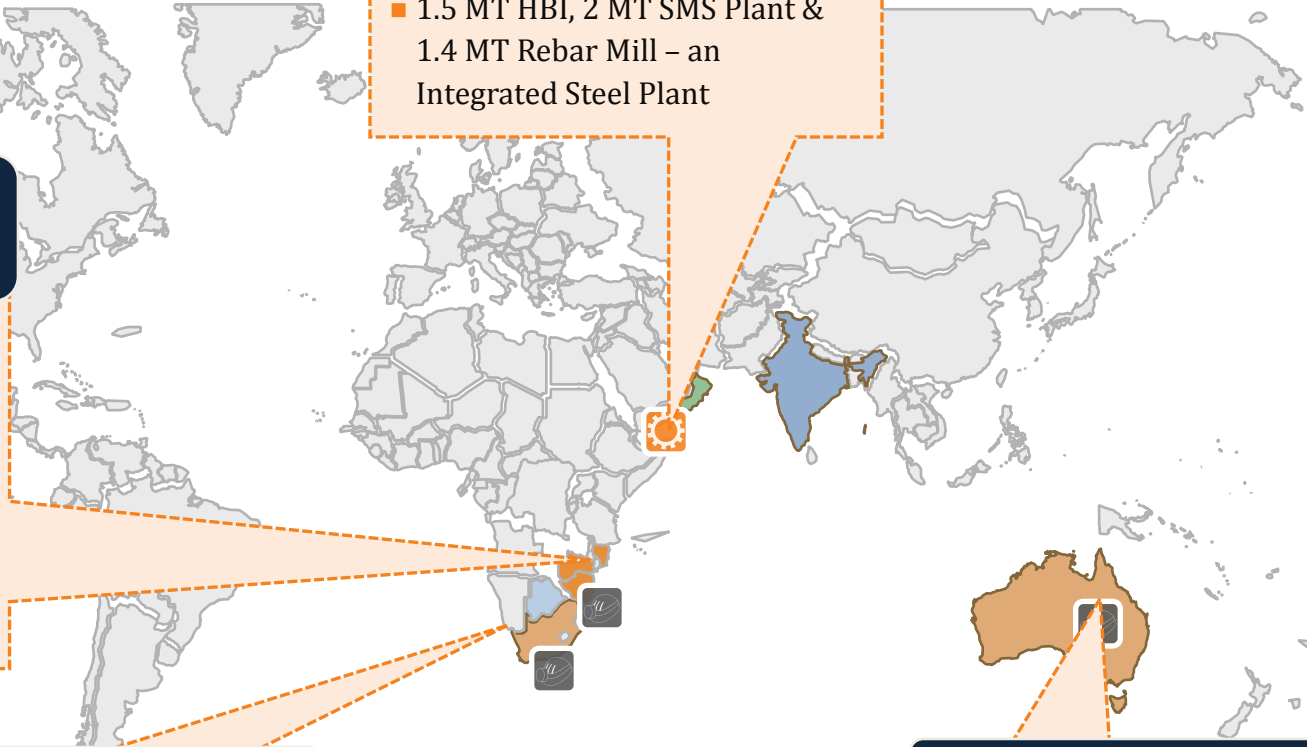
- Developing 3MTPA coal mine in Mozambique's coal-rich Moatize region
- Coal resources estimated at 1.3 bn tonnes including coking coal

## South Africa, Africa

- JSP's Kiepersol Colliery produces Anthracite coal, sold domestically and internationally Plans to ramp up capacity

## Australia

- Acquired 82.04% controlling stake in Wollongong Coal





# *Holding structure for global operations*

**Jindal Steel & Power Ltd**

Listed Operating Entity in India

**Jindal Steel & Power (Mauritius) Ltd**

Holding company for overseas business

Oman

2 MTPA Integrated Steel plant

Australia

Coking Coal

South Africa

Anthracite Coal

Mozambique

Thermal/ Coking Coal

## Marching towards becoming a Fully Integrated Steel Plant



**1.5 HBI**



**2 MTPA SMS**



**1.4 MTPA Rolling Mill**

## Oman - Salient Features

- First & Largest Integrated steel plant of Oman
- Third largest in Arabian Peninsula
- Port based steel plant
- Largest Arc furnace in Arabian Peninsula, with contracted natural gas
- World's Best Performing Midrex plant (category 1.5MTPA)
- Products : TMT Rebars, HBI, Blooms & Billets

## Sourcing of Raw Materials - Oman Plant

- Iron Ore Pellets from **Vale** (*Next door neighbour*)
- Natural Gas from Oman Government through long term contract (*at concessional prices*)
- Scrap from External Purchase

## An Underground Anthracite and Lean Bituminous Coal mine



- **Location:** Piet Retief in Mpumalanga province, South Africa
- **Resources :** Up to 40 MT
- **Reserves:** 22 MT
- **Products :** Anthracite coal
- **Mining Capacity :** Can be expanded to 1.2 MTPA capacity annually

## Open Cut Coking & Thermal Coal Mine



- **Location:** Chirodzi, Mozambique (105 kms from Tete)
- **Resources :** 2,000 MT
- **Reserves:** 132 MT
- **Products :** Semi Hard coking coal , High Grade Thermal Coal
- **Mining Capacity :** 3 MTPA

# Mozambique - Salient Features



## Coking Coal Asset

Exploration License over 100 square kms.  
in Central Kalimantan

Medium to large size deposits of hard  
coking

## Thermal Coal Asset

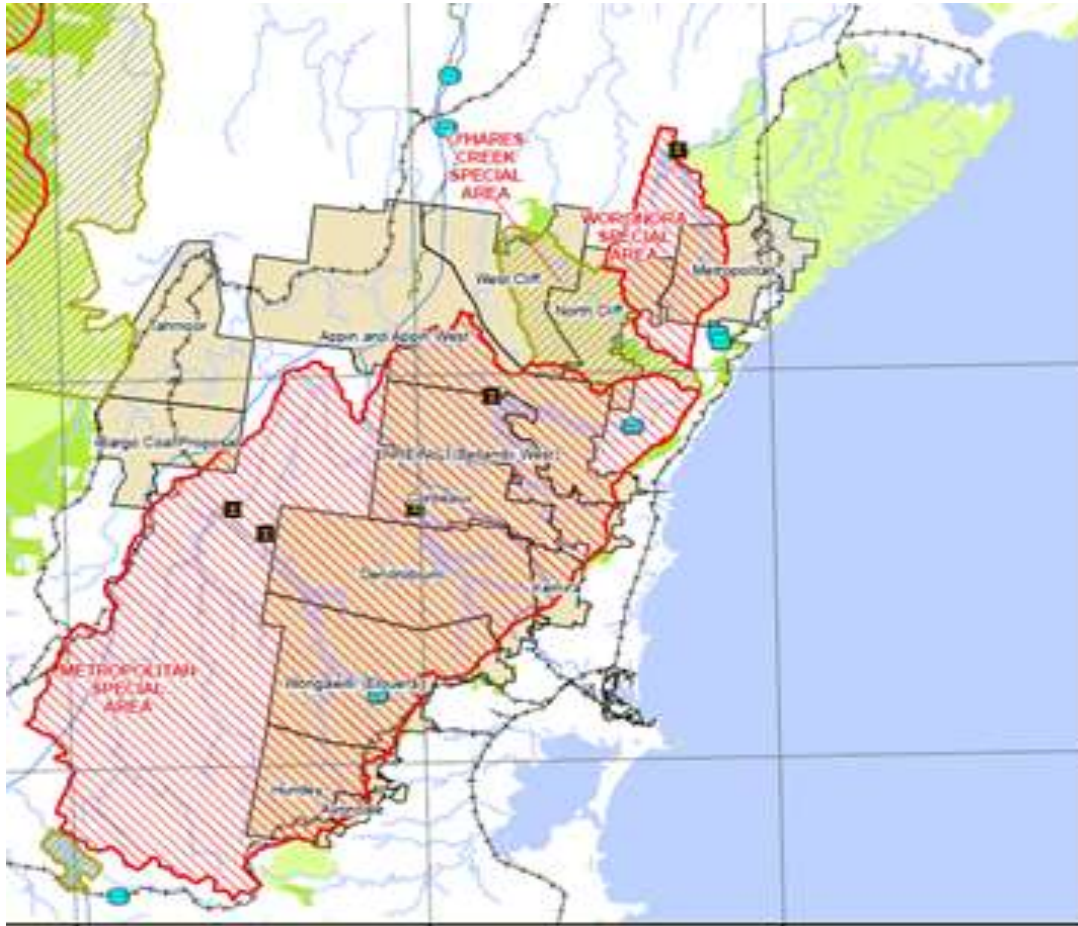
- Large size deposit of low ash – low sulphur thermal coal for open cast operation
  - MoU signed with Bupati Barito to develop road for coal hauling
- Return load for 200,000 MT tonnages secured resulting in decrease of logistics costs
- Infrastructure developed in Moatize for storage and loading of coal into trains

Two Mines with Unique unmatched location & strategic advantages



- **Location:** Russell Vale & Wongawilli (Wollongong - 80 kms. South of Sydney)
- **Reserves :** 175 MT
- **Products :** High Quality Coking Coal
- **Mining Capacity :** Targeting 2 MTPA
- **Logistics :** Port Kembla - Less than 20 kms

# Australia - Salient Features



## ➤ Unique Geographic Location

- Wollongong  
(80 kms. South of Sydney)
- Experienced mining community available
- Port Kembla:  
Less than 20 kms with sufficient coal handling and Cape size capacity
- Easy and reliable connectivity through Rail and Road

**Unique unmatched location with strategic advantages**

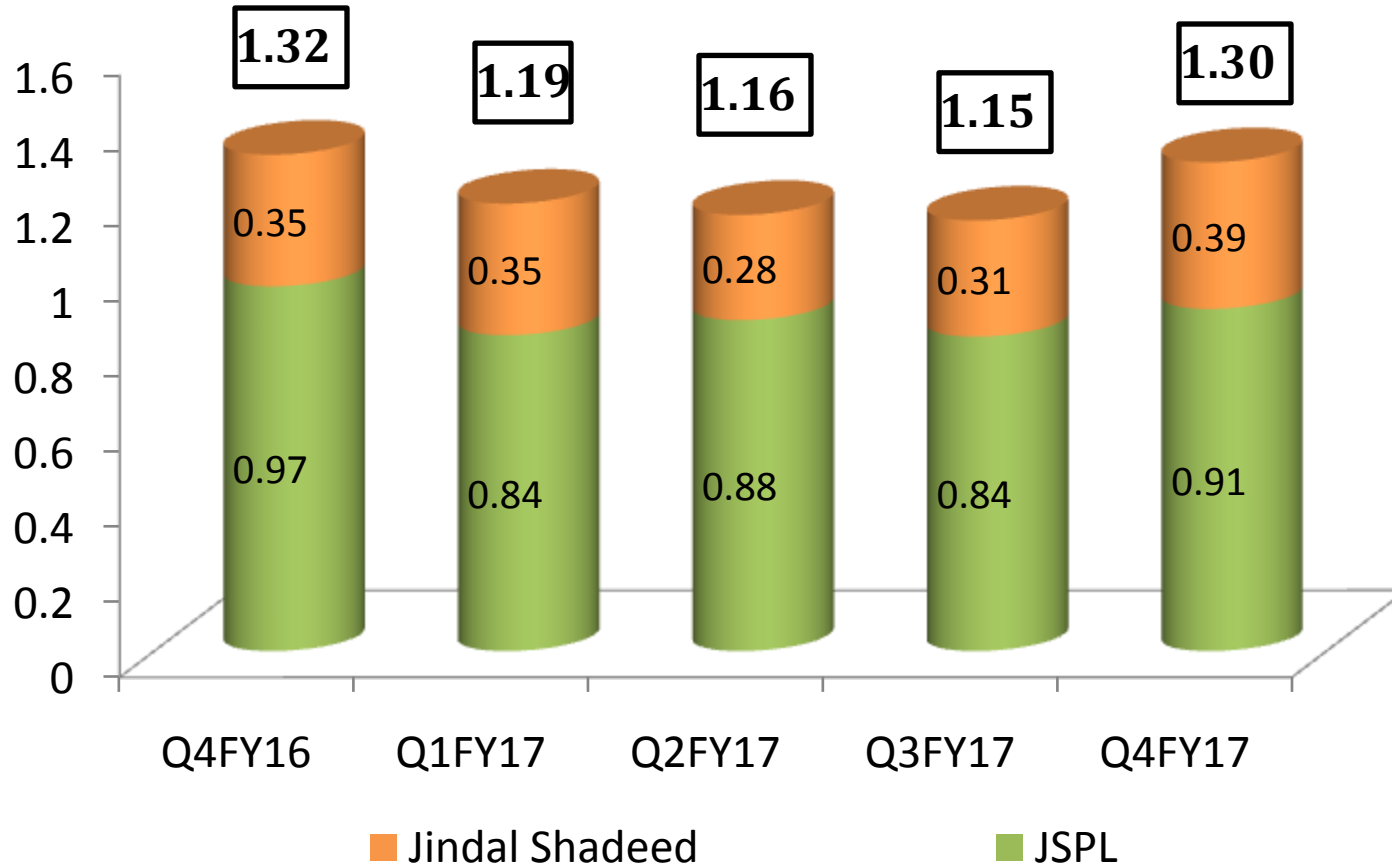


# *Financials & Operational Highlights*



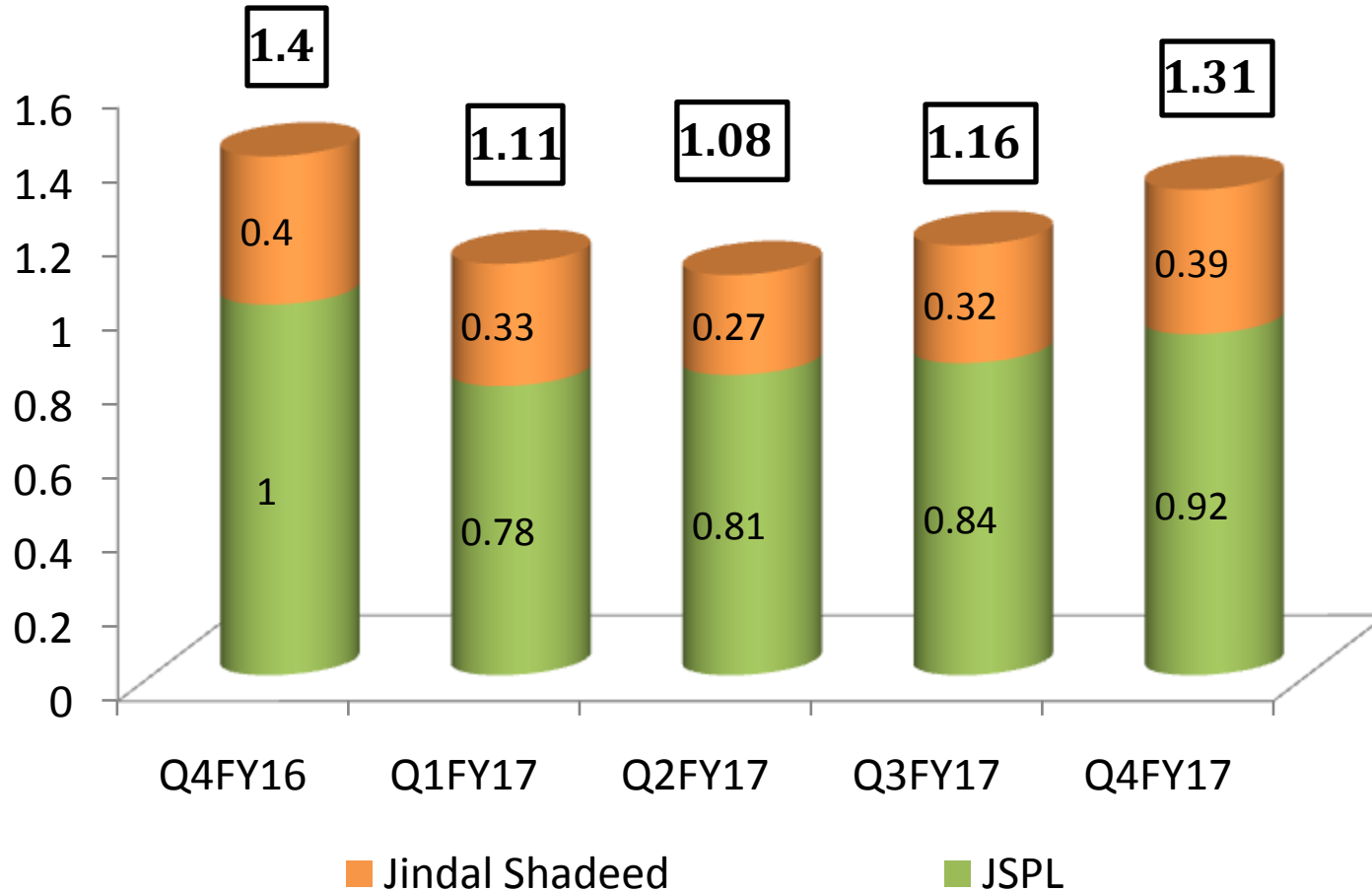
# Consolidated Steel Production

(Figures in Million Tonnes)



# Consolidated Steel Sales Volumes

(Figures in Million Tonnes)



# Consolidated Financials at a Glance

(Figures in INR Crores)

	FY11	FY12	FY13	FY14	FY15	FY16	FY17
<b>INCOME STATEMENT</b>							
Revenue	13,194	18,351	19,943	19,352	19,626	20,368	22,696
EBITDA	6,398	6,935	6,131	5,522	5,708	3,437	4,658
PAT	3,804	4,002	2,912	1,894	-1,455	-3,086	-2,540
Cash Profit	5,115	5,575	4,594	3,876	2,065	104	905
<b>SIGNIFICANT RATIOS</b>							
EBITDA Margin (%)	48%	38%	31%	29%	29%	17%	21%
Net Profit to Sales (%)	29%	22%	15%	10%	-7%	-15%	-11%
EPS (INR/Share)	40.8	42.4	31.1	20.5	-15.9	-33.7	-27.8

# Standalone 4Q FY 17 - Snapshot of Key Financials

(Figures in INR Crores)

Particulars	Q4FY17	Q4FY16	Q3FY17	%YoY	%QoQ
Total Revenue	4,545	4,033	3,898	+13%	+17%
EBITDA	914	681	779	+34%	+17%
EBITDA %	20%	17%	20%		
Depreciation	489	531	542	-8%	-10%
Finance Cost	515	641	535	-20%	-4%
Profit/(Loss) Before Tax	(81)	(491)	(298)	+83%	+73%
Profit/(Loss) After Tax	(116)	(218)	(187)	+47%	+38%
Cash Profit	408	41	244	+895%	+67%

Particulars	FY17	FY16	%YoY
Total Revenue	15,494	14,693	+5%
EBITDA	2,858	2,441	+17%
EBITDA %	18%	17%	
Depreciation	2,044	2,148	-5%
Finance Cost	2,280	2,646	-14%
Profit/(Loss) Before Tax	(1,457)	(2,330)	+37%
Profit/(Loss) After Tax	(986)	(1,419)	+30%
Cash Profit	587	(182)	+423%

# Consolidated 4Q FY 17 - Snapshot of Key Financials

(Figures in INR Crores)

Particulars	Q4FY17	Q4FY16	Q3FY17	%YoY	%QoQ
Total Revenue	6,756	5,442	5,787	+24%	+17%
EBITDA	1,552	898	1,269	+73%	+22%
EBITDA %	23%	16%	22%		
Depreciation	1,006	1,232	1,027	-18%	-2%
Finance Cost	864	853	828	+1%	+4%
PBT before Exceptional	(309)	(1,080)	(586)	+71%	+47%
Exceptional Items	(253)	(113)	-		
Profit/(Loss) Before Tax	(56)	(967)	(586)	+94%	+90%
Profit/(Loss) After Tax	(98)	(637)	(455)	+85%	+78%
Cash Profit	950	264	442	+260%	+115%

Particulars	FY17	FY16	%YoY
Total Revenue	22,696	20,368	+11%
EBITDA	4,658	3,437	+36%
EBITDA %	21%	17%	
Depreciation	3,949	4,068	-3%
Finance Cost	3,390	3,254	+4%
PBT before Exceptional	(2,671)	(3,728)	+28%
Exceptional Items	372	236	
Profit/(Loss) Before Tax	(3,043)	(3,964)	+23%
Profit/(Loss) After Tax	(2,540)	(3,086)	+18%
Cash Profit	905	104	+770%

# **Key Initiatives & Project Updates**

# India's largest Blast Furnace





## BOF under construction



## Converted : EAF to NEOF (Zero power furnace), Raigarh



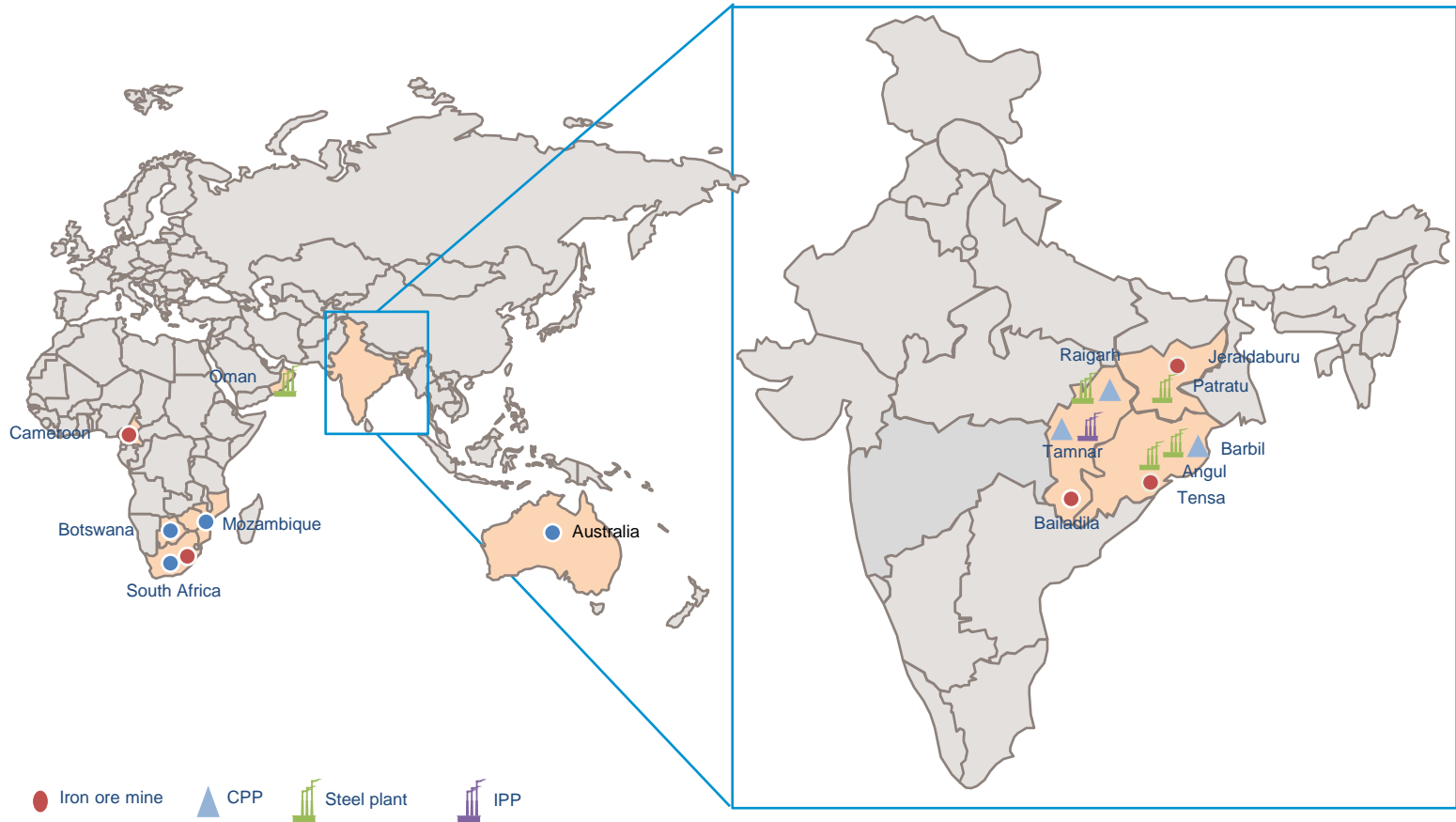
- JSPL has successfully converted one of its Electric Arc Furnace(EAF) to a basic oxygen type furnace.
- Would result in i) lower Thermal coal requirement (as more hot metal produced through Blast Furnace route will be used) ii) power savings and iii) eliminates consumption of Electrodes.
- This will result in substantial saving in our steel making (liquid steel) cost at Raigarh. .

# Construction & Solutions Growth : BKC, Mumbai



# Facilities at a glance

# Global Presence in attractive markets



Presence in resource rich regions well connected with evacuation infrastructure

*INDIA*

# ***Chhattisgarh State***

# *JISPL, Raigarh*





# *Structural Steel Division, Punjipatra*



# *Heavy Machinery Division, Raipur*





# *Odisha State*

# *J SPL, Angul*



# *Pellet Plant, Barbil*



# ***Jharkhand State***

# *JISPL, Patratu*





# *Oman*







## 9 PILLARS OF CSR



### HEALTH

Establishing multiple charitable clinics, hospitals and providing world-class health facilities to its employees and communities.



### INFRASTRUCTURE DEVELOPMENT

Improve quality of life by reducing rural urban divide. Easy access to modern amenities and improve surroundings.



### ENVIRONMENT

Protecting the environment through JSPL's policies and practices.



### EDUCATION

Capacity building through education and enabling environment for children to evolve as responsible citizens.



### LIVESTOCK

Improved animal husbandry practices for improve health status of livestock.



### ADMINISTRATIVE EXPENSES



### LIVELIHOOD

Development of self-dependency and encouragement for practical skills for individual community and long term prosperity.



### SPORTS, ART & CULTURE

Channelizing the energy of the youth towards the development of communities by giving opportunity in various activities.



### DOCUMENTATION MONITORING EVALUATION OTHERS

# A Responsible Corporate Citizen

Health	Education & Skill development	Infrastructure	Women empowerment	Environment
<p><b>85,000</b></p> <p>Adolescent Girls benefited from our healthcare initiatives</p>	<p><b>15,000</b></p> <p>Students empowered through quality education</p>	<p><b>2,50,000</b></p> <p>People provided with safe and clean drinking water</p>	<p><b>1,000</b></p> <p>Women entrepreneurs developed</p>	<p><b>87,000+</b></p> <p>Saplings planted</p>
<p><b>200,000</b></p> <p>People benefited from our health initiatives</p>	<p><b>24,000+</b></p> <p>People provided with vocational training</p>	<p><b>10,000</b></p> <p>People benefited by 1,000 sanitation facilities</p>	<p><b>1,500+</b></p> <p>Women benefited by 150+ Self Help Groups through income generation activities</p>	<p><b>343</b></p> <p>Acres of watershed developed</p>



SAFETY INDUCTION



ON-THE-JOB SAFETY TRAINING



SAFETY REVIEWS



SAFETY AUDITS / INSPECTIONS



TOOL BOX MEETINGS



SAFETY AWARDS/REWARDS



MEDICAL EXAMINATIONS/ WORLD CLASS PPEs



MOCK DRILLS



## Recent Awards & Recognitions

- ***Mr. Naveen Jindal, Chairman, JSPL received the 'Steelie Award 2016' for being the "Industry Communicator of the Year"***
- ***Jindal Shadeed won Frost and Sullivan's '2017 GCC Ferrous Company of the Year Award' for Business Excellence best practices.***
- ***JSPL honoured with the prestigious Odisha INC Award for its innovative CSR activities in Odisha.***
- ***JSPL-Barbil Pellet Plant awarded with most prestigious JIPM award for TPM –Excellence***
  - ***First pellet plant in the world to be conferred with this JIPM award***
- ***Jindal Shadeed won following laurels***
  - ***Prestigious "Sultan Qaboos Award" for Industrial Excellence by the Ministry of Commerce and Industry on February 9, 2016***
  - ***2016 Steel Manufacturing Product Line Strategy Leadership Award, GCC", at GIL 2016: Middle East, Dammam, Saudi Arabia on February 10, 2016***
- ***Jindal Shadeed have received 2 Awards from Midrex***
  - ***For the achievement of 5 Million tons of production within 4 years of Operation [2011 – 2014]***
  - ***For the achievement of Exceptional annual operational availability for the year 2014 - 98.51%. (Total 3 plants have received the awards out of 72 Midrex DR Plants in the world, and Jindal Shadeed stands number 2.)***
- ***JSPL Raigarh got placed in Limca book of world records' for manufacturing longest 121 meter long single piece track rail***
- ***JPL received "Par Excellence Award for 5'S implementation" by QCFI on 26th Nov'16***
- ***JPL was awarded 2<sup>nd</sup> rank amid the top 25 'Best in Industry' companies in Dale Carnegie Global Leadership Award***
- ***MRIG TRISHNA (Coal Washery), AGNI (Operation) & AAKASH (Ash Handling Plant) won the prestigious "Par Excellence Award" at NCQC-2016, Raipur***

# *Award and Accolades for JSPL (2014-15)*

- *National Award for Excellence in Energy Management 2014, CII*
- *National Award for Innovative Training Practices, ISTD Delhi, 2014*
- *Dun & Bradstreet – Infra Award 2014 in Power Category*
- *Chhattisgarh Industrial Health & Safety Award, Govt of Chhattisgarh, 2014*
- *Award for Innovative HR Practices, Global HR Excellence Awards, 2015*
- *Best CSR Practice – Education, Think Media Inc., 2014*
- *Project Excellence Award, Global Symposium, 2014*
- *Procurement Excellence Award: "Outstanding Leader in Procurement" at the 2nd Annual CPO Forum India & Awards 2014.*
- *Innovation in Employee Retention Strategies, Greentech Foundation, 2014*
- *2nd Best in Overall Mining – Mega Mines Group, Annual Safety Fortnight Competitions, 2015*

**2013** International Safety Award with merit 2014 by British Safety Council, UK.  
World CSR Congress Award 2013  
Greentech CSR Award 2013



**2012** Golden Peacock National CSR Award 2012  
  
Ranked No.1 as Wealth Creator in India over a 10- year period (Business World)  
Awarded the Dun & Bradstreet- Rolta Corporate Awards 2011

**2011** Ranked 3rd in the Metals Category of Business World's India's Most Respected Companies Survey  
Received the Forbes Asia's 'Fabulous 50' International Award  
Golden Peacock Innovation Management Awards  
Greentech Award for 1st Position in Metal & Mining Industries  
World HRD Congress CSR Award on women empowerment  
  
Rated the World's 2nd Largest Value Creator by Boston Consulting Group (BCG), based on Total Shareholder Return from 2005-2009, and the largest Value Creator in Mining and Materials category



**2010** Received the Forbes Asia's 'Fabulous 50' International Award  
Golden Peacock Innovation Management Awards  
CSR Excellence Award 2010 by ASSOCHAM for promoting and propagating Corporate Social Responsibility initiatives  
  
Received the CNBC's Most Promising Entrant into the Big League at IBLA



**2009** National Energy Conservation Award  
Golden Peacock Innovation Award 2009  
Winner of 'Shrishti Green Cube Award 2009'  
SAIL HR Excellence Award 2009

**For any information please contact: -**

Mr. Nishant Baranwal – Head, Investor Relations

Tel : +91 11-41462198

Mobile:+91 8800690255

Email: - [nishant.baranwal@jindalsteel.com](mailto:nishant.baranwal@jindalsteel.com)

Ms. Shweta Bagaria – Assistant Manager, Investor Relations

Tel: +91-124-6612073

Mobile: +91 95995 53717

Email: [shweta.bagaria@jindalsteel.com](mailto:shweta.bagaria@jindalsteel.com)

*This presentation may contain certain forward looking statements concerning JSPL's future business prospects and business profitability, which are subject to a number of risks and uncertainties and the actual results could materially differ from those in such forward looking statements.*

*The risks and uncertainties relating to these statements include, but are not limited to, risks and uncertainties regarding fluctuations in earnings, our ability to manage growth, competition (both domestic and international), economic growth in India and the target countries for exports, ability to attract and retain highly skilled professionals, time and cost over runs on contracts, our ability to manage our international operations, government policies and actions with respect to investments, fiscal deficits, regulations, etc., interest and other fiscal costs generally prevailing in the economy. Past performance may not be indicative of future performance. We do not undertake to update our forward-looking statements.*

*This presentation is not intended, and does not, constitute or form part of any offer, invitation or the solicitation of an offer to purchase, otherwise acquire, subscribe for, sell or otherwise dispose of, any securities in JSPL or any of its subsidiary undertakings or any other invitation or inducement to engage in investment activities, neither shall this presentation nor the fact of its distribution form the basis of, or be relied on in connection with, any contract or investment decision. The numbers & the contents in this presentation are purely indicative and subject to change.*

**THANK YOU**