



KEWAL KIRAN CLOTHING LIMITED

Registered & Corporate Office :- Kewal Kiran Estate, 460/7, I.B. Patel Road, Goregaon (E), Mumbai: 400 063
Tel No. +91 22 26814400 Fax No. +91 22 26814410
CIN No. L18101MH1992PLC065136 website : www.kewalkiran.com

Date: January 21, 2023

To,

<u>National Stock Exchange of India Limited</u> Exchange Plaza, Plot No. C/1, G Block, Bandra Kurla Complex, Bandra(East), Mumbai-400051 NSE Code - KKCL	<u>BSE (Bombay Stock Exchange) Limited</u> "Phiroze Jeejeebhoy Tower", Dalal Street, Mumbai-400001 BSE Code - 532732
--	---

Dear Sir/Madam,

Sub: Investor Presentation – Disclosure under Regulation 30 of the SEBI (Listing Obligations and Disclosure Requirements) Regulations, 2015, as amended.

Pursuant to the provisions of the Regulation 30 of the SEBI (Listing Obligations and Disclosure Requirements) Regulations, 2015, as amended, please find enclosed herewith the Investor Presentation for the third quarter (Q3) and nine months (9M) period ending December 31, 2022.

The said presentation will also be uploaded on the website of the Company.

This is for your information and records.

Thanking you.

Yours Truly
For Kewal Kiran Clothing Limited

Abhijit B. Warange
Vice President – Legal & Company Secretary

Encl.: a/a

KIRAN

KEWAL KIRAN CLOTHING LIMITED

KILLER
this is us

IntegrIt
THE
SPIRIT
CALLED
YOUTH

LA MAN Pg³
BE THE STAR

easies
BY KILLER

DÉSI BELLE
BREAK FREE

OFFICIAL SPONSOR



A KILLER PARTNERSHIP!



Q3 & 9M FY23 FINANCIAL OVERVIEW & CORPORATE PRESENTATION

Disclaimer

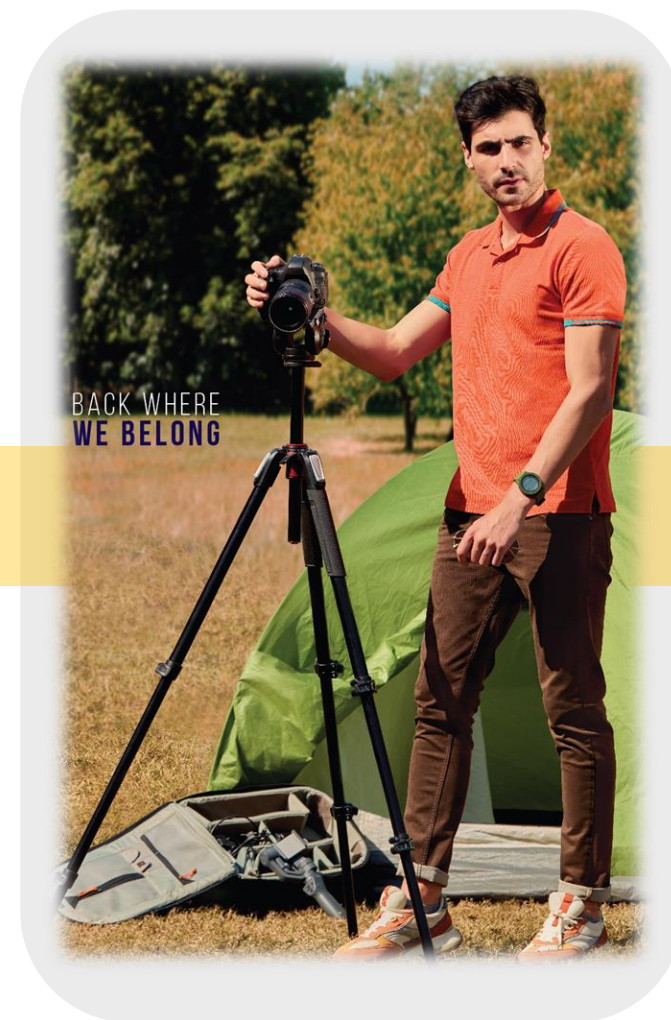
This presentation has been prepared by Kewal Kiran Clothing Limited (the “**Company**”) solely for information purposes without regard to any specific objectives, financial situations or informational needs of any particular person. By attending the meeting where this presentation is being made or by reading the presentation materials, you agree to be bound by following limitations:

The information in this presentation has been prepared for use in presentations by the Company for information purposes only and does not constitute, or should not be regarded as, or form part of, any offer, invitation, inducement or advertisement to sell or issue, or any solicitation or initiation of any offer to purchase or subscribe for, any securities of the Company in any jurisdiction, including but not limited to India; nor shall it, or the fact of its distribution form the basis of, or be relied on, in connection with, any investment decision or any contract or commitment to purchase or subscribe for any securities of the Company in any jurisdiction, including but not limited to India. This presentation does not constitute a recommendation by the Company or any other party to sell or buy any securities of the Company. This presentation and its contents are not and should not be construed as a “prospectus” or “offer document” (as defined or referred to, as the case may be, under the Companies Act, 2013, as amended) or an “offer document” under the Securities and Exchange Board of India (Issue of Capital and Disclosure Requirements) Regulations, 2018, as amended. Nothing in this presentation is intended by the Company to be construed as legal, accounting, tax or other advice. This presentation may not be copied, distributed or disseminated, directly or indirectly, in any manner.

This presentation may include statements which may constitute forward-looking statements. These statements include descriptions regarding the intent, belief or current expectations of the Company or its directors and officers with respect to the results of operations and financial condition of the Company. Forward-looking statements are statements concerning future circumstances and results, and any other statements that are not historical facts, sometimes identified by the words including, without limitation "believes", "expects", "predicts", "intends", "projects", "plans", "estimates", "aims", "foresees", "anticipates", "targets", and similar expressions. Such forward-looking statements are not guarantees of future performance and involve risks and uncertainties, and actual results may differ from those specified in such forward-looking statements as a result of various factors and assumptions. The risks and uncertainties relating to these statements include, but are not limited to, (i) fluctuations in earnings, (ii) the Company’s ability to manage growth, (iii) competition, (iv) government policies and regulations, and (v) political, economic, legal and social conditions in India and outside India. The Company does not undertake any obligation to revise or update any forward-looking statement that may be made from time to time by or on behalf of the Company. Given these risks, uncertainties and other factors, viewers of this presentation are cautioned not to place undue reliance on these forward-looking statements. The Company assumes no obligation to update any forward-looking information contained in this Presentation. Any statements or projections made by third parties included in this Presentation are not verified by the Company and the Company is not responsible for such third party statements and projections.



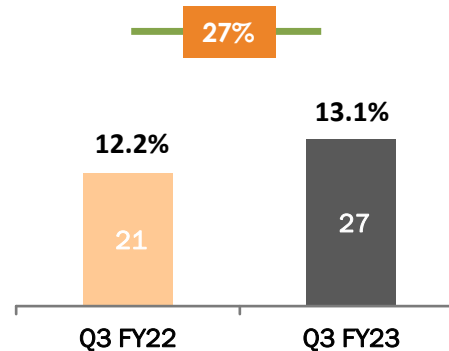
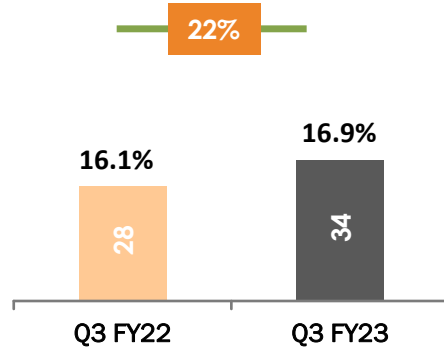
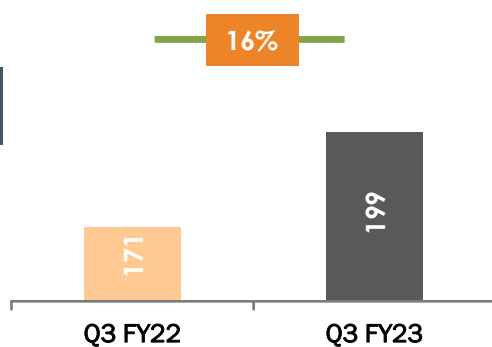
Q3 & 9M FY23 Operational & Financial Highlights



Q3/9M FY23 – Key Financial Highlights

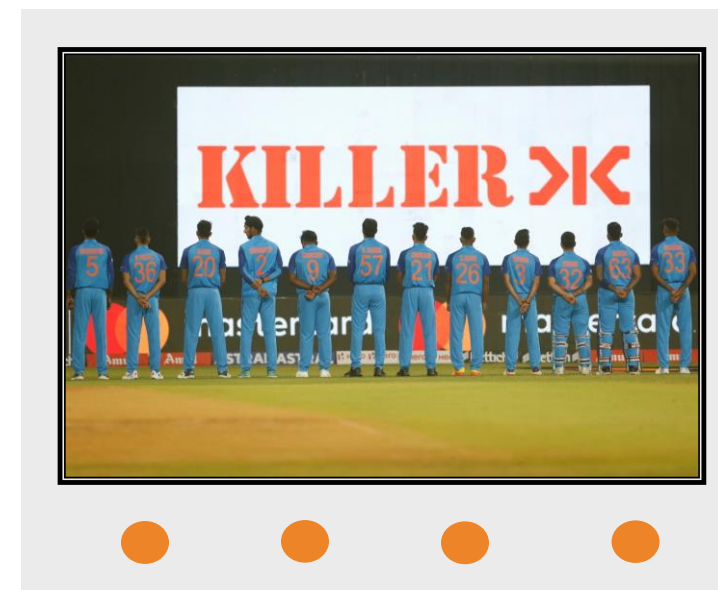
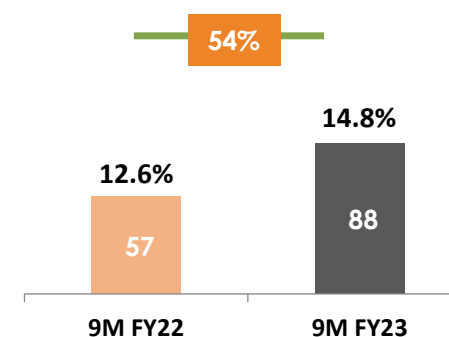
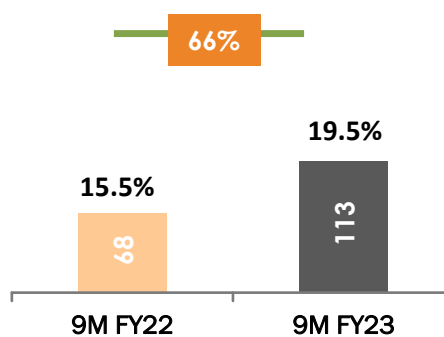
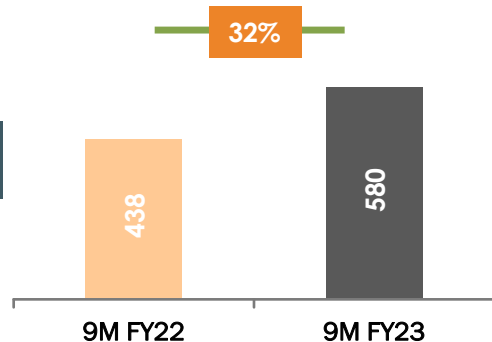
Q3

₹ Cr



9M

₹ Cr



Profitability Highlights

Particulars (₹ Cr)	Q3 FY23	Q3 FY22	Y-O-Y % Change	Q2 FY23	9M FY23	9M FY22	Y-O-Y % Change	FY22
Revenue from Operations	199.1	171.4	16%	226.3	580.0	438.0	32%	607.6
COGS	118.2	103.5		132.6	338.5	261.7		358.7
Employee Expenses	25.3	20.7		24.3	72.5	57.0		79.8
Administrative & Other Expenses	9.7	8.0		10.1	27.8	26.9		35.4
Selling & Distribution Expenses	12.4	11.8		9.3	28.1	24.6		33.7
EBIDTA	33.6	27.5	22%	50.0	112.9	67.9	66%	100.0
EBIDTA Margin	16.9%	16.1%		22.1%	19.5%	15.5%		16.5%
Other Income	6.6	3.8		5.9	12.7	13.4		16.9
Depreciation & Amortisation	2.3	1.8		2.2	6.4	5.2		7.0
EBIT	37.9	29.6	28%	53.7	119.2	76.0	57%	109.9
EBIT Margin	18.4%	16.9%		23.1%	20.1%	16.8%		17.6%
Finance Cost	1.7	1.0		1.5	4.6	3.5		4.5
Profit before Tax	36.2	28.6	27%	52.3	114.7	72.5	58%	105.3
PBT Margin	17.6%	16.3%		22.5%	19.3%	16.1%		16.9%
Tax	9.2	7.3		13.1	27.0	15.7		23.7
PAT	27.0	21.3	27%	39.1	87.7	56.9	54%	81.7
PAT Margin %	13.1%	12.2%		16.8%	14.8%	12.6%		13.1%

Balance Sheet

Particulars (₹ Cr)	As at Dec 2022	As at Mar 2022
ASSETS		
Non-Current Assets		
Property, Plant and Equipment	82.8	77.7
Right of Use Asset	13.8	6.8
Capital work-in-progress	-	0.9
Investment Property	1.3	1.3
Other Intangible Assets	0.3	0.3
Financial Assets		
Investment in Subsidiary & Joint Venture	8.5	8.5
Investments Others	99.7	18.8
Loans	2.8	-
Other Financial Assets	14.0	15.3
Deferred Tax Assets (Net)	2.1	0.4
Non Current Assets (Net)	1.9	0.1
Other Non Current Assets	1.8	0.2
Total - Non-Current Assets	228.8	130.1
Current Assets		
Inventories	200.5	113.0
Financial Assets		
Investments	45.4	118.5
Trade Receivables	176.2	170.9
Cash and Cash Equivalents	171.1	191.2
Bank balances other than Cash and Cash equivalent:	0.1	0.6
Other Financial Assets	1.9	2.7
Other Current Assets	19.8	16.1
Total - Current Assets	615.1	613.0
TOTAL - ASSETS	843.9	743.1

Particulars (₹ Cr)	As at Dec 2022	As at Mar 2022
EQUITY AND LIABILITIES		
Equity		
Equity Share Capital	61.6	61.6
Other Equity	454.0	416.6
Total - Shareholders' funds	515.6	478.2
LIABILITIES		
Non-Current Liabilities		
Financial Liabilities		
Lease Liability	10.8	4.4
Provisions	0.1	0.1
-	-	-
-	-	-
-	-	-
-	-	-
Total - Non-Current Liabilities	10.9	4.5
Current Liabilities		
Financial Liabilities		
Borrowings	54.5	76.6
Lease Liabilities	1.8	0.9
Trade Payables	76.7	53.4
Other Financial Liabilities	16.4	14.5
Other Current Liabilities	14.1	14.9
Provisions	149.3	100.1
Current Tax Liabilities (Net)	4.6	-
Total - Current Liabilities	317.3	260.5
TOTAL - EQUITY AND LIABILITIES	843.9	743.1

KILLERX

PROUD TO BE RECOGNISED AS
**THE BEST BRAND
OF THE YEAR 2022**

Bb

THE ECONOMIC TIMES
BEST BRANDS

2022

Bb

The Economic Times recognises
KILLERX
as one of the Best Brands 2022

Economic Times : Iconic Brands of India 2022

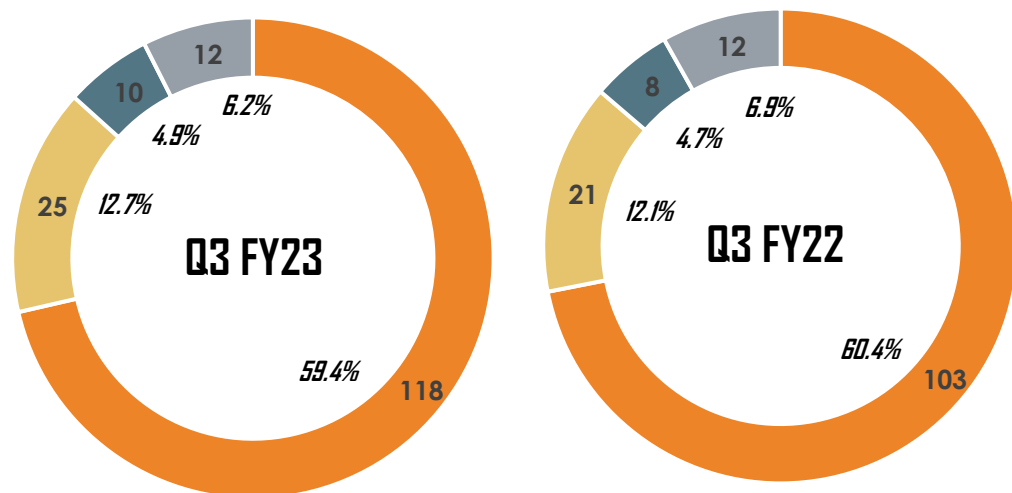


One of the **Best Brands 2022**

Operational Matrix

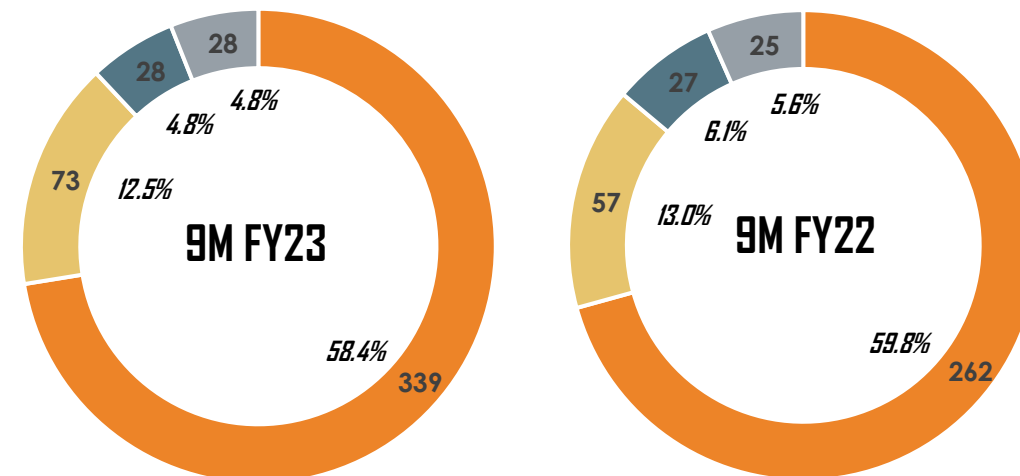
Q3 Operational Matrix

₹ Cr



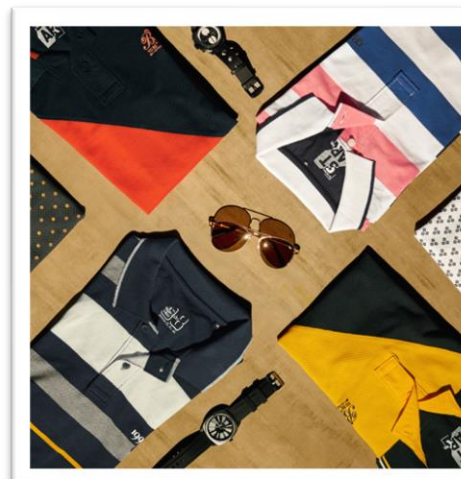
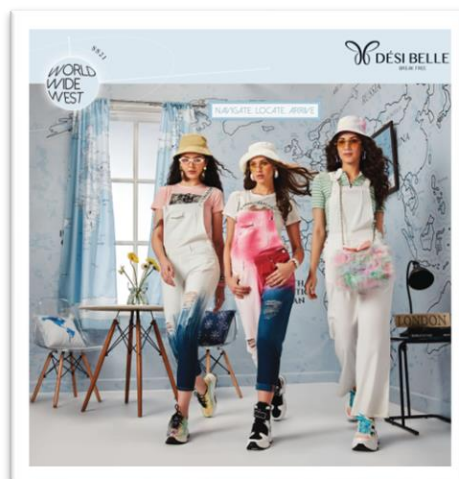
9M Operational Matrix

₹ Cr



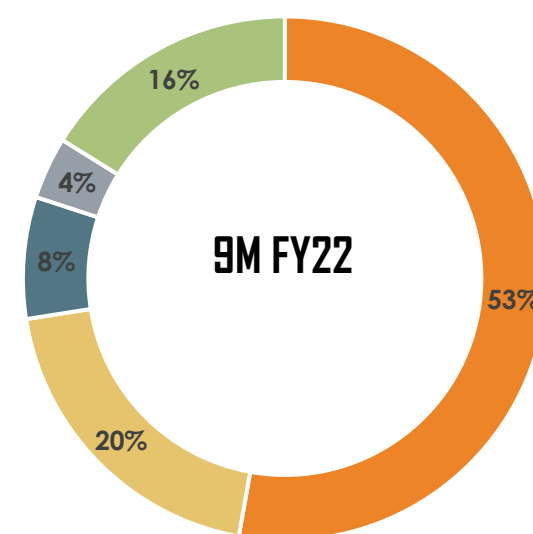
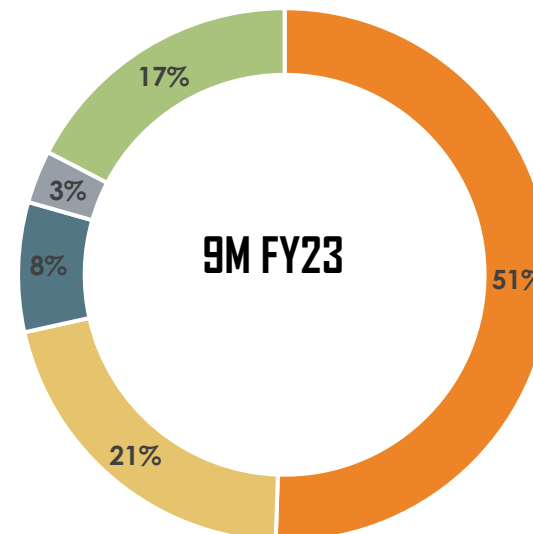
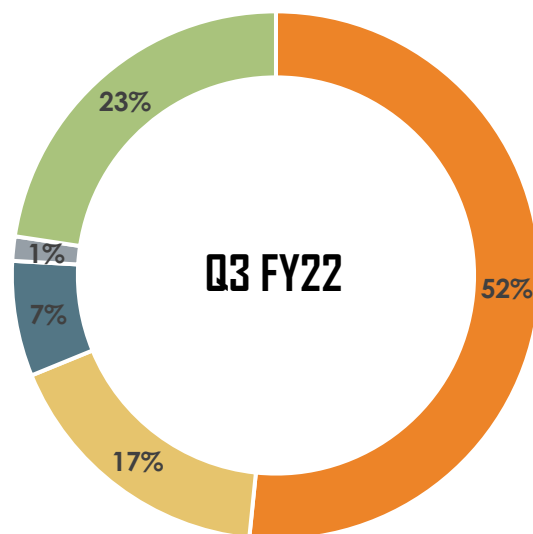
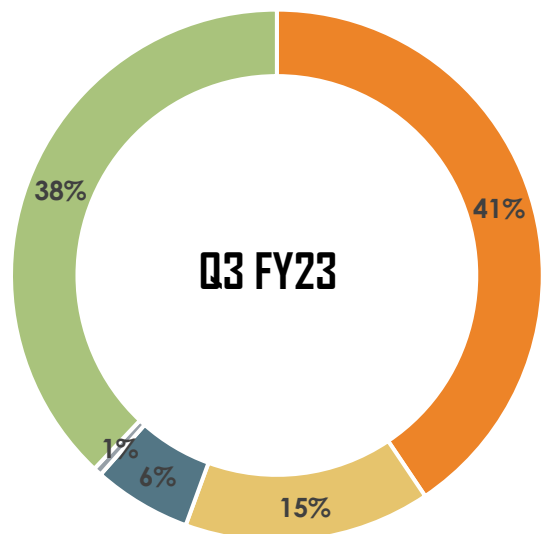
■ COGS ■ Employee Exp. ■ Admn & Oth. Exp. ■ S&D Exp.

% of Operating Revenue



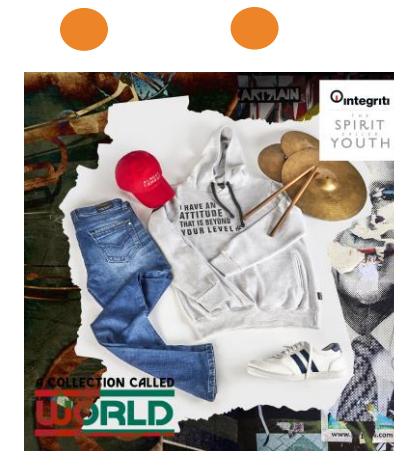
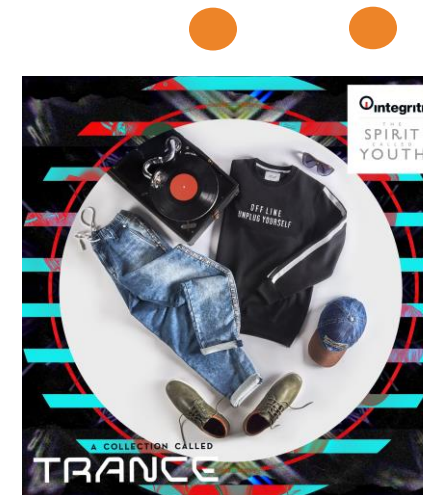
Product Category Performance

■ JEANS ■ SHIRTS ■ TROUSERS ■ T-SHIRTS ■ Others (incl. Accessories)



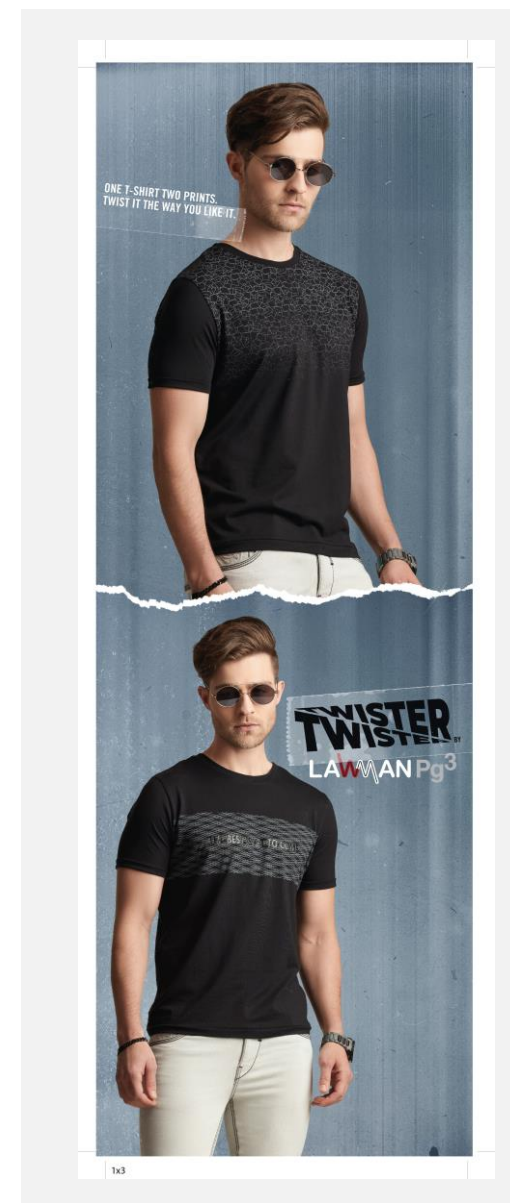
Product Wise Sales Contribution

Qty Sales / Sales Realisation	Q3 FY23	Q3 FY22	9M FY23	9M FY22	FY22
Apparel and Lifestyle Accessories/Products Sales Qty (Units in Lakhs)	25.74	25.14	81.29	64.95	89.77
Apparel Units % of Total Qty Sales	70%	73%	72%	77%	76%
Sales Realisation (₹ per unit)	767	679	709	672	674



Channel wise Sales Performance

	Q3 FY23	Q3 FY22	9M FY23	9M FY22	FY22
Retail	55%	46%	46%	41%	42%
Non-Retail	32%	30%	34%	34%	36%
Others	13%	23%	19%	26%	22%



EBO Network Update

Particulars	COCO/COFO Nos.	FOFO Nos.	Total Nos.
As on 1 April 2022	25	331	356
As on 31 Dec 2022	27	411	438
Under Development		37	

82

Break up of EBOs	
• K-Lounge	: 205
• Killer Brand EBOs	: 205
• Other Brand EBOs	: 27
• Factory Outlet	: 1

Mix of COCO / COFO / FOFO stores (with FOFO model dominant)

Totally spread over an approx. area of more than

2,75,000 sq.ft spread across India



Mumbai – Viviana Mall



Mumbai – Infiniti Mall



Allahabad, Uttar Pradesh



Howrah, West Bengal



Buxar, Bihar



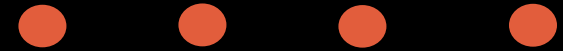
Vasco, Goa



Varanasi, Uttar Pradesh



Select Recent EBO Openings



Indore, Madhya Pradesh



Sagwara, Rajasthan

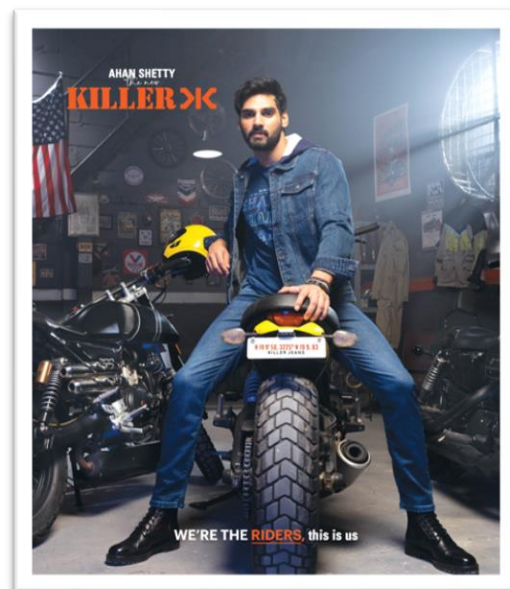


Mumbai, Maharashtra



Mysore, Karnataka

Q3FY23 : Brand Promotion Campaign





Title Sponsor : India-Bangladesh Test Series

India v/s South Africa Series

(In-Stadium Advertisement)



Pro Kabaddi League : Season 9



Associate Sponsor :

Gujarat Giants

WELCOME!

LAWMAN Pg3 | **MUMBA**

ASSOCIATE SPONSOR

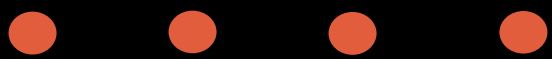
We welcome **Killer Jeans** as
the **Associate Sponsor** for
Pro Kabaddi League
Season 9.



Emerging Sport Focus : Kabaddi

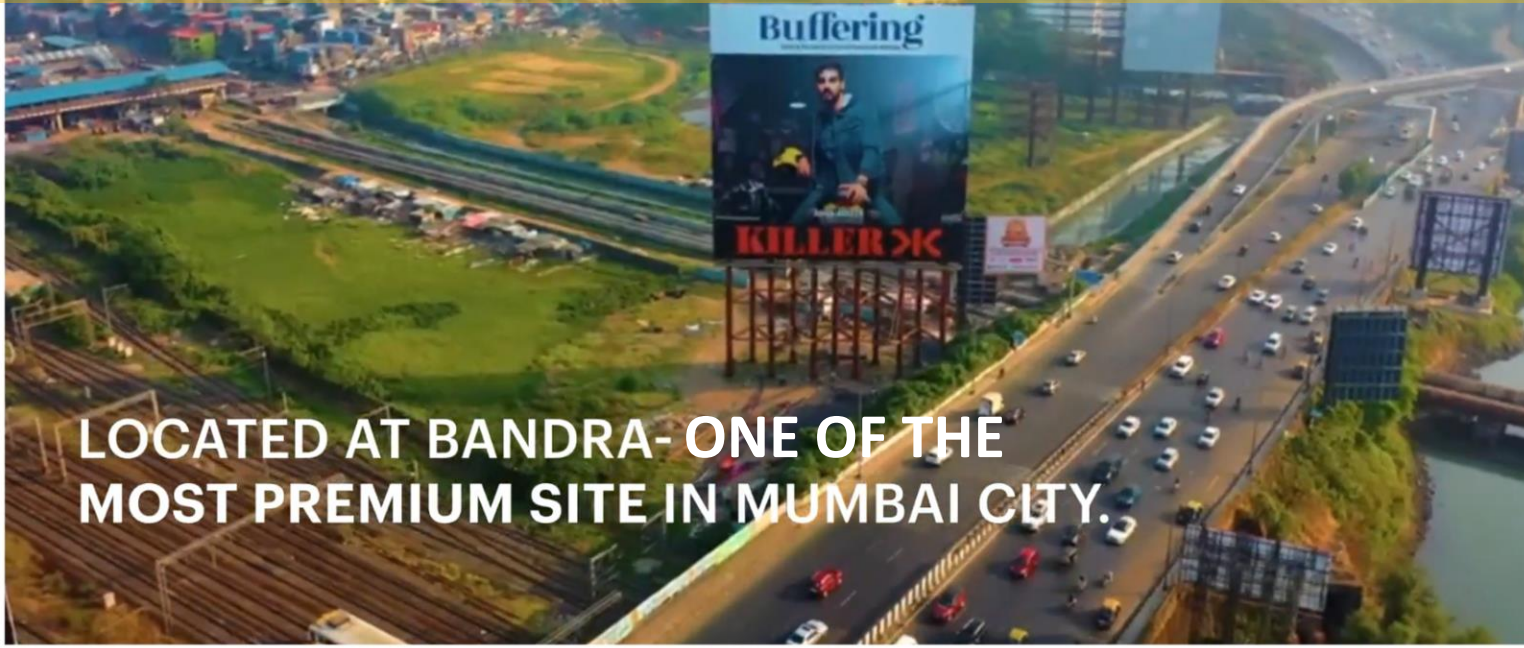
Associate Sponsor :

U Mumba





Outdoor Marketing Campaign



LOCATED AT BANDRA- ONE OF THE MOST PREMIUM SITE IN MUMBAI CITY.



TANUJ VIJWANI
#Chillin
COLLECTION

20
SPRITED
WEAR

K-LOUNGE

FOR FRANCHISEE & INSTITUTIONAL ENQUIRY CALL:
WEST AND SOUTH 9828056602
NORTH: 9356002885
EAST: 9437015400
ODISHA & CHATTISHGARH 9927504020
MP: 9928282920
CORPORATE OFFICE (MUMBAI) 022-26814400
OR EMAIL: franchisee@kwalkiran.com

APPARELS | EYE GEAR | FOOT WEAR | INNER WEAR | TIME GEAR | TRAVEL GEAR | PERSONAL CARE | ACCESSORIES

AVAILABLE AT: **Ontegrity** | EXCLUSIVE STORES, K-LOUNGE & ALL LEADING RETAILERS IN YOUR CITY.

FOR FRANCHISEE & INSTITUTIONAL ENQUIRY CALL : 022-26814400 OR EMAIL AT : franchisee@kwalkiran.com | www.kwalkiran.com
OR EMAIL AT : franchisee@kwalkiran.com | www.kwalkiran.com

DÉSI BELLE
BREAK FREE

STYLE VOYAGE

AVAILABLE AT: K-LOUNGE AND ALL LEADING RETAILERS IN YOUR CITY

FOR FRANCHISEE & INSTITUTIONAL ENQUIRY CALL : 022-26814400 OR EMAIL AT : franchisee@kwalkiran.com

FOLLOW US ON:  

GET BACK INTO THE WORLD

easies
BY KILLER X

BACK WHERE WE BELONG

AVAILABLE AT: K-LOUNGE AND ALL LEADING RETAILERS IN YOUR CITY

FOR FRANCHISEE & INSTITUTIONAL ENQUIRY CALL : 022-26814400 OR EMAIL AT : franchisee@kwalkiran.com | www.easies.in
OR EMAIL AT : franchisee@kwalkiran.com | www.easies.in

GET BACK INTO THE WORLD

easies
BY KILLER X

BACK WHERE WE BELONG

AVAILABLE AT: K-LOUNGE AND ALL LEADING RETAILERS IN YOUR CITY

FOR FRANCHISEE & INSTITUTIONAL ENQUIRY CALL : 022-26814400 OR EMAIL AT : franchisee@kwalkiran.com | www.easies.in
OR EMAIL AT : franchisee@kwalkiran.com | www.easies.in

Print Media Advertisements

ROHIT SHETTY'S
LAWMAN Pg3

APPARELS | EYE GEAR | FOOT WEAR | INNER WEAR | TIME GEAR | TRAVEL GEAR | PERSONAL CARE | ACCESSORIES

AVAILABLE AT: **LAWMAN** | EXCLUSIVE STORES, K-LOUNGE & ALL LEADING RETAILERS IN YOUR CITY.

FOR FRANCHISEE & INSTITUTIONAL ENQUIRY CALL : 022-26814400 OR EMAIL AT : franchisee@kwalkiran.com | www.lawman3.com
OR EMAIL AT : franchisee@kwalkiran.com | www.lawman3.com

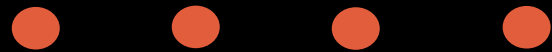
ANJAN SHETTY
KILLER X

WE'RE THE RIDERS, this is us

APPARELS | EYEWEAR | HATSWEAR | TRAVEL GEAR | PERSONAL CARE | ACCESSORIES

AVAILABLE AT: **KILLER EXCLUSIVE STORES** | EXCLUSIVE STORES | K-LOUNGE STORES | AND ALL LEADING RETAILERS IN YOUR CITY.

FOR FRANCHISEE & INSTITUTIONAL ENQUIRY CALL : 022-26814400 OR EMAIL AT : franchisee@kwalkiran.com | www.killerx.com
OR EMAIL AT : franchisee@kwalkiran.com | www.killerx.com



KKCL : Corporate Overview



40+ years of Success filled Journey



- Amongst the few Indian Denim brands to have successfully contributed to the evolving Denim culture in India : 40+ years of tasting success and continuing



- Integrated Operations & amongst the few players to be present across Value Chain : Designing - Manufacturing - Branding - Retailing



- Denims in Apparels are recognized with distinctive Brand Labels : KKCL has been able to penetrate through its audience with its evolving brand culture with 4 iconic brands



- Established name in the Menswear category : KKCL intends to capitalize its brand recall with deep penetration across various product categories in the menswear category and opportunistically explore other categories gradually keeping its profitability driven ethos in mind

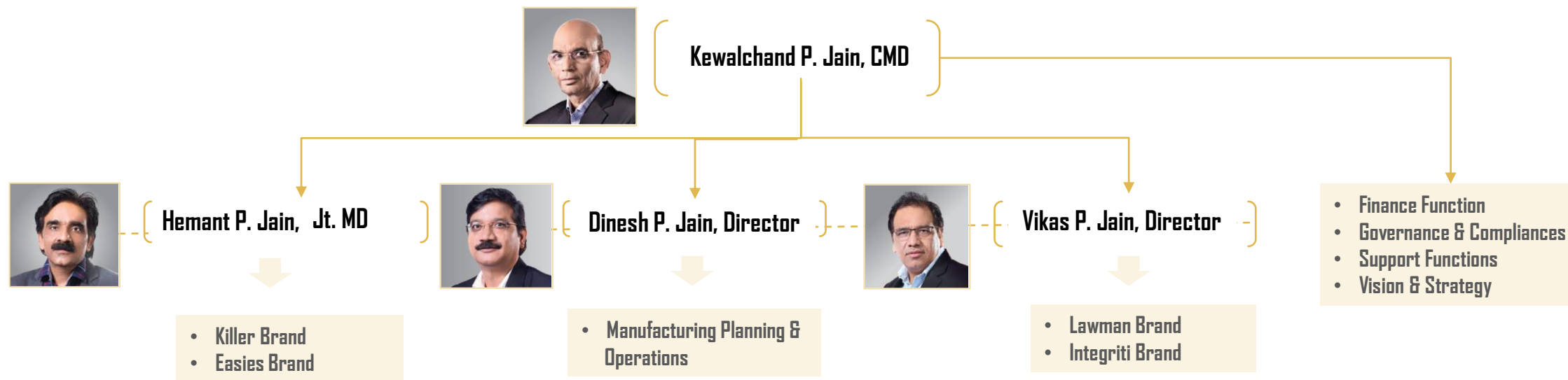


- Established Widespread Distribution : Presence and reach across India with channel mix spread across EBOs, National Chain stores, E-commerce channel and the traditional MBO channel



Designing success since 1980s

Focused Founding Team



MISSION :

- ❖ Driving excellence through our people, business partners and other stakeholders
- ❖ Focusing on consumer satisfaction and executing a customer-centric business module
- ❖ Adopting international standards and best practices across our operations
- ❖ Executing the business based on the three core growth principles of: Stability, Sustainability and Scalability



VISION :

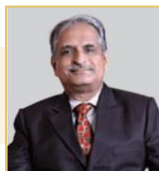
To be a world-class business organization which enables value, best services and enhancement of net worth for all the stakeholders.

Independent Directors



Dr. Prakash A. Mody
Independent Director

- Chairman and Managing Director of Unichem Laboratories Limited and brings onboard rich experience in marketing, research and production
- A doctorate in Organic Chemistry from University of Mumbai and pursued Marketing Management from Jamnalal Bajaj Institute of Management Studies, University of Mumbai;
- Graduate alumnus of the Harvard Business School, following attending the Owner Presidents' Management Programme.



Mr. Nimish G. Pandya
Independent Director

- Founding Partner at Pandya Juris LLP, International Lawyers & Tax Consultants and Proprietor at Pandya and Co. Advocates and Notary
- Trustee of Shree Sathya Sai Trust, Maharashtra and All India President of Shree Satya Sai Seva Organisation, India
- Member of the Bar Council of Maharashtra and was appointed as a Notary Public by the Government of Maharashtra in 1993
- Specialises in Mergers and Acquisitions, Litigation and Arbitration, Trusts and Charities, Corporate, Commercial and Financial Planning and Execution, including Transaction Support and Contracts, Intellectual Property, Technology, Media and Communications, Competition and Trade, Conveyancing and Real Estates and Family and Personal Law



C.A. Mr. Yogesh A. Thar
Independent Director

- Senior Partner in Bansil S. Mehta & Co., a reputed Chartered Accountancy firm in Mumbai
- Member of the Direct Tax Committee of the Chamber of Tax Consultants
- Member of the Institute of Chartered Accountants of India and with 31+ years of experience in Business Mergers, Acquisitions and Restructuring, Business Valuations, Corporate Taxation and Taxation of Non-resident Citizens and Foreign Companies



C.A Ms. Drushti R. Desai
Independent Director

- Partner in Bansil S. Mehta & Co., a reputed Chartered Accountancy firm in Mumbai
- Member of the Institute of Chartered Accountants of India with 20+ years of experience in Valuation of Shares, Businesses and Intangibles, Advisory Services on Schemes relating to Mergers, Acquisitions, Spin-offs and other forms of Corporate Restructuring and Family Settlements, Financial and Management Advice, Corporate and Individual Taxation (Income-tax, Wealth-tax, Gift-tax)

Bringing multiple industry experience

KKCL : A New Rising focused towards Growth



- **Induction of experienced Professional Team** across key market Functions coupled with strong business acumen of the founding team across the supply chain



- **Expansion of Product category** to diversify revenue and providing customers an increased choice offering



- Renewed focus towards increase in **growing number of Brand focused EBOs** with a dual purpose of increasing visibility and growing coverage



- **Equal participation in the growth led by new age channels of Large Format stores and E-commerce** with balanced business models focused towards profitability



- **Increased support aids towards the distribution channel** in order to provide increased incentive to perform better



- More focus towards **increased marketing coverage**



- **Organizing Trade Shows** twice a year which helps in supply chain planning



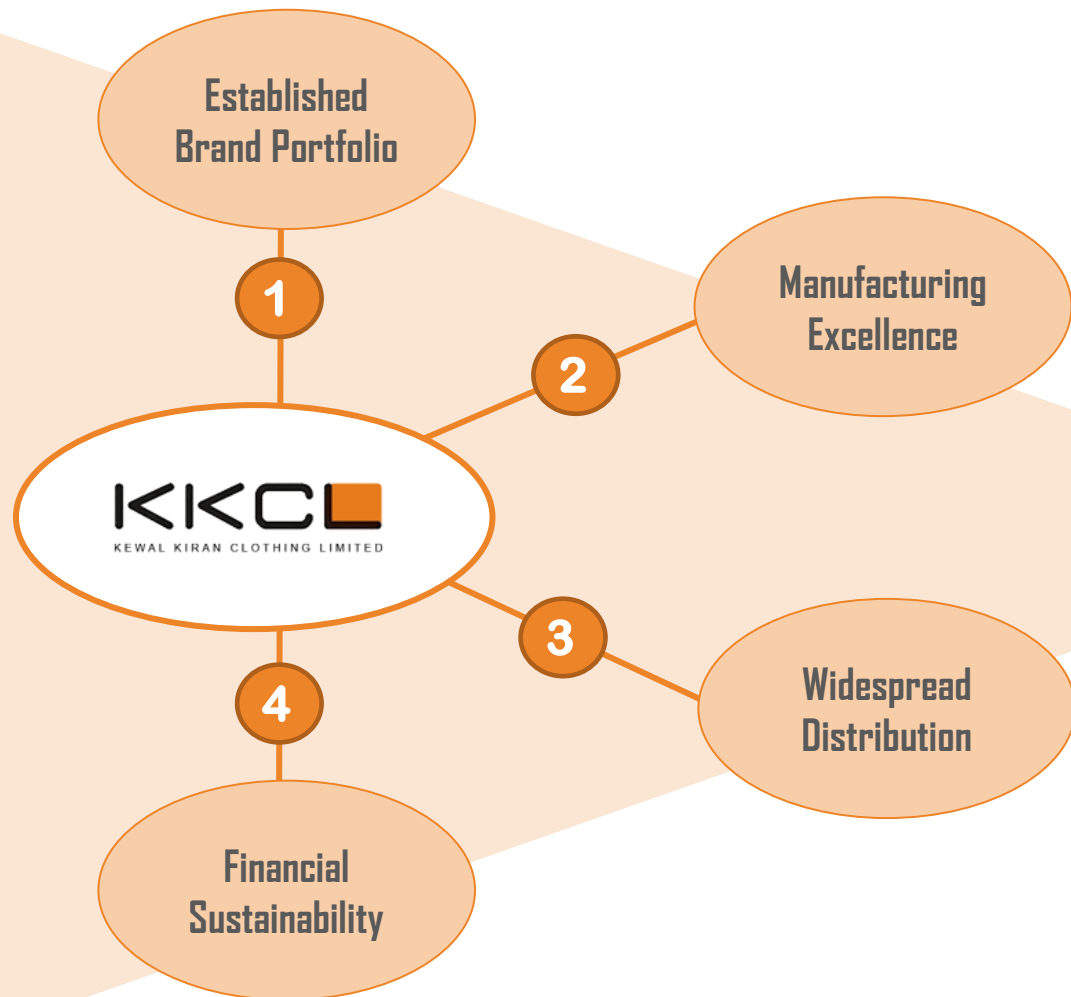


**Killer & easies
Trade Show : August 2022**

Trade Show : Connecting with Channel Partners



KKCL : Riding on Key Success Factors



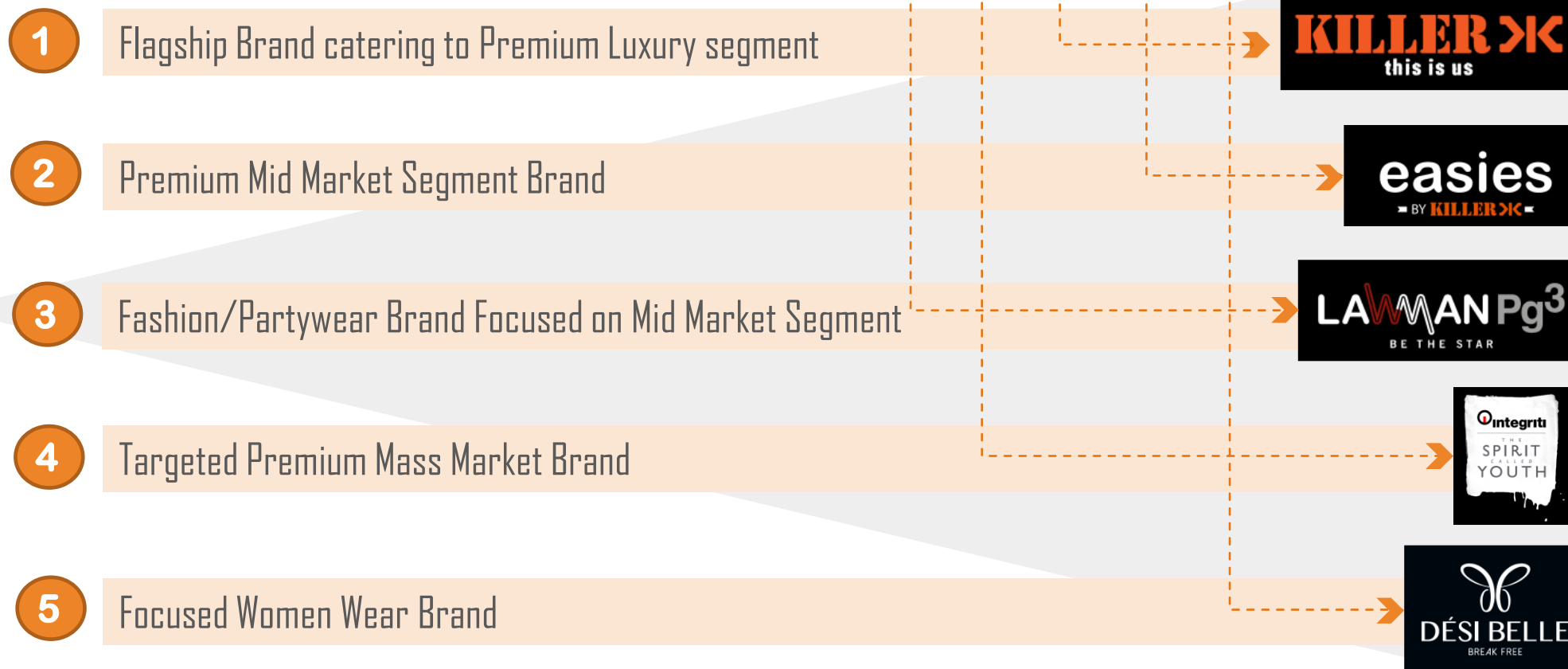
1 Established Brand Portfolio

Key Mantra - Branding drives Aspiration, commands Premium and sense of Stickiness



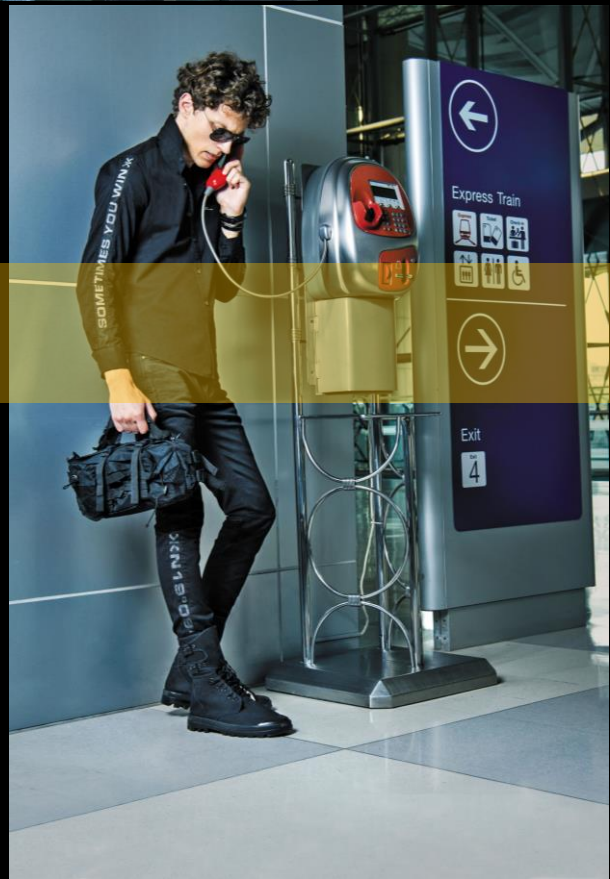
Established Brand Portfolio

“ **L I K E D** ”
by targeted consumers



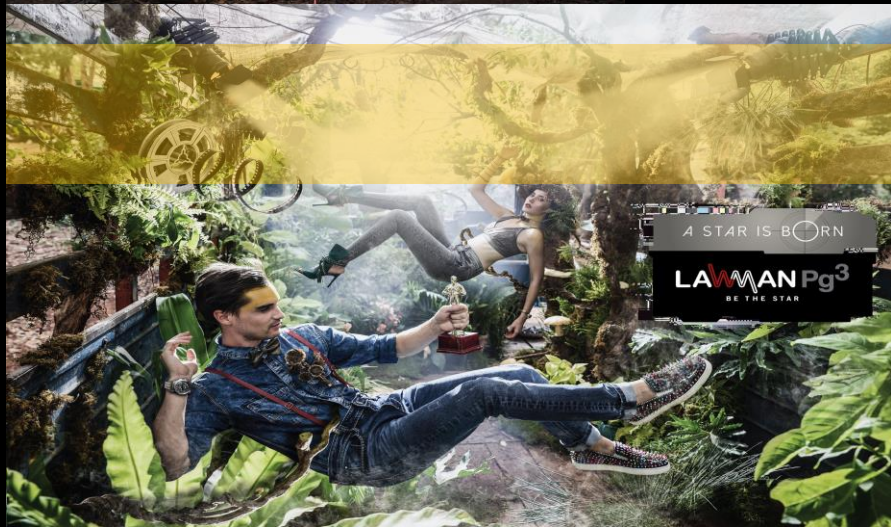
Denims:
Label Tagging an important tool

Labels that compete with global contemporaries



Killer : Premium Casuals

Flagship brand "Killer" imbibes in it the cool confidence of today's youth and redefines denims, giving a bold character to them



Lawman : Fashion Capital

A glamorous, lifestyle brand, "LawmanPg3" specialises in trendsetting denim and partywear for young adults



Reflecting and resonating the ambition and energy of youth, "Integriti" offers a credible, trusted and value proposition across work and casual wear



Easies : Contemporary Semi Formal Wear



— With our sharp smart casuals, —
let your hair down throughout the week.

easies
BY KILLERX

A blend of classic and contemporary preferences, “Easies” is reshaping corporate fashion in India through its range of semi-formal menswear, made from the most premium range of fabric and linen



DESİ BELLE
WOMENWEAR

WORLD
WIDE
WEST

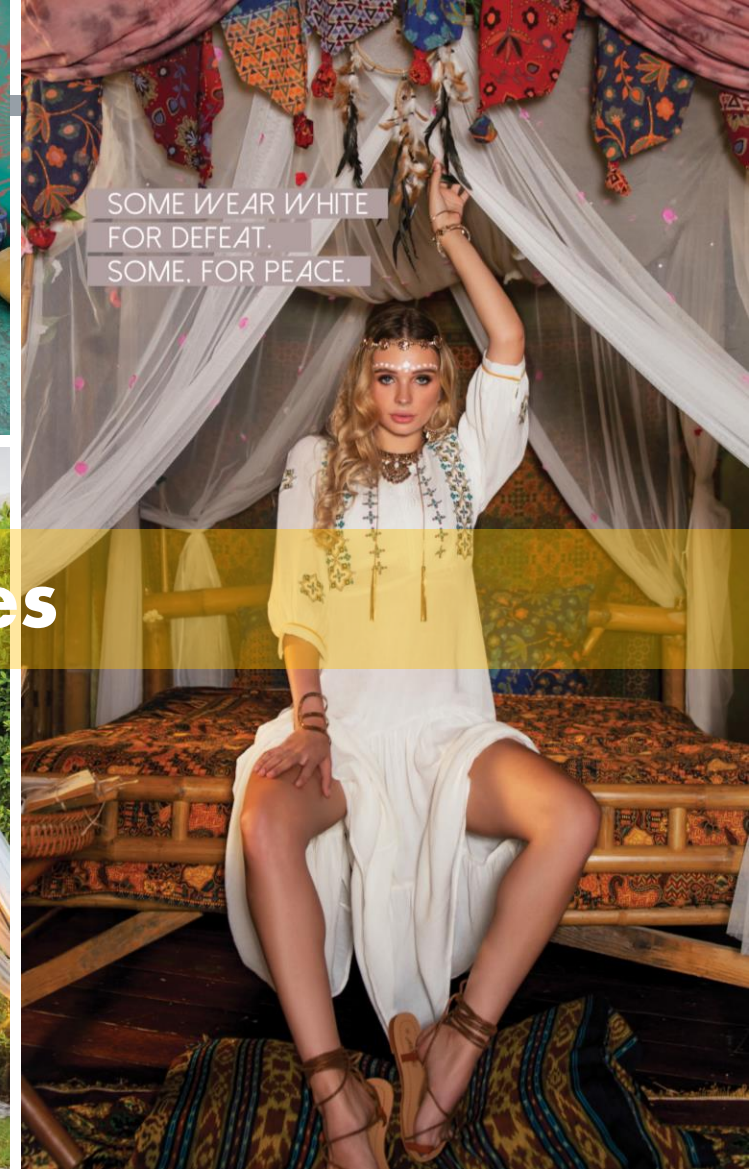
NAVIGATE. LOCATE. ARRIVE.



desi belle



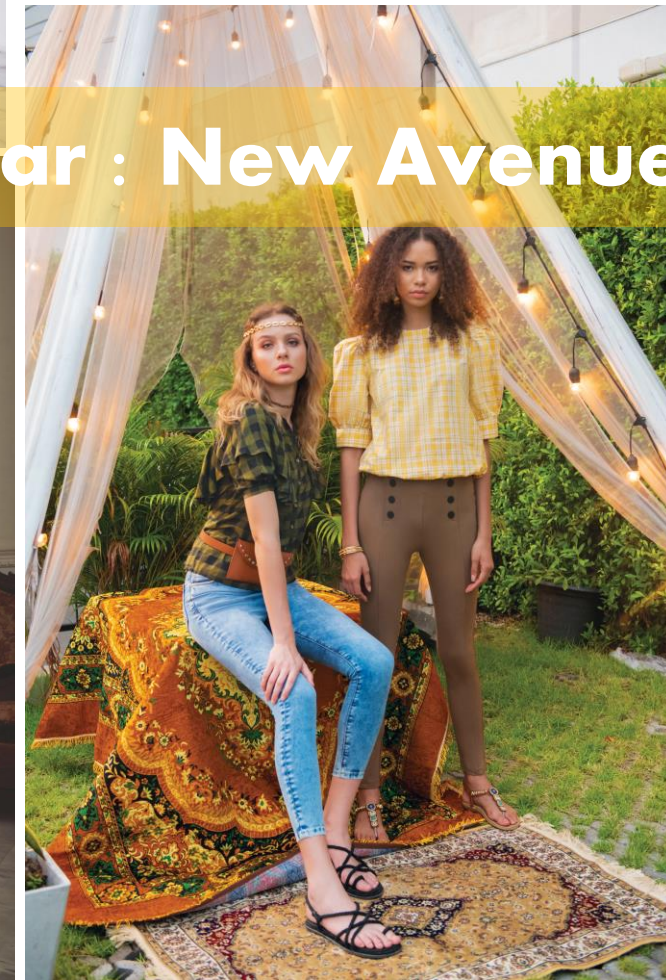
SOME WEAR WHITE
FOR DEFEAT.
SOME, FOR PEACE.



Women Wear : New Avenues



desi belle



"Desi Belle" is an Indo-Western womenswear that exists at the confluence of modern style and desi touch, catering to the contemporary woman

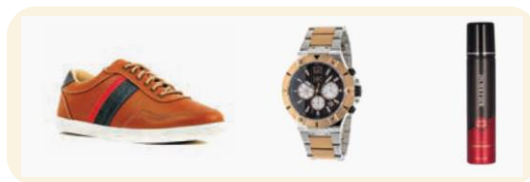
Wide Product Portfolio capitalizing Brands



- **Accessories Business through Brand Extension** : Opportunistic Play capitalizing on Brand Recognition & Entrenchment

Deodorants - Shoes - Belts - Masks - Purses - Socks : Amongst Others

Product Identification - Licensing - Branding - Selling



Integrati
THE SPIRIT CALLED YOUTH

SUBJECT: **POUCH JACKET**

3 OUTSTANDING FEATURES

- POUCH
- ZIPPER
- POCKETS

JACKET FOLDABLE INTO POUCH

X-ZIPPER
Robust and stylish zipper sliders that glide smoothly.

X-POCKETS
Adding to your glam with the stylish pockets placed at just the right spots.

X-FACTOR
POUCH JACKET

Integrati
THE SPIRIT CALLED YOUTH

SUBJECT: **REVERSIBLE JACKET**

4 OUTSTANDING FEATURES

- REVERSIBLE
- PIPE
- POCKETS
- NECK PILLOW

WEAR THE JACKET INSIDE OUT

X-GREEN JACKET LOOK

X-BLUE JACKET LOOK

X-FACTOR
REVERSIBLE JACKET

Integrati
THE SPIRIT CALLED YOUTH

SUBJECT: **DREAMERS JACKET**
(CEREBULL WASH FELLOW)

8 OUTSTANDING FEATURES

- PIPE
- POCKETS
- NECK PILLOW
- ZIPPER
- MATERIAL

X-PIPE
The secret weapon that enables you to inflate the pillow and the power of your dreams.

X-POCKETS
Adding to your glam with the stylish pockets placed at just the right spots.

X-NECK PILLOW
The attached pillow gives your neck the rest that it needs in between the adventures. A perfect launch station for your dreams.

X-FACTOR
DREAMERS JACKET

Integrati
THE SPIRIT CALLED YOUTH

SUBJECT: **PUFFER JACKET**

5 OUTSTANDING FEATURES

- ZIPPER
- MATERIAL
- POCKETS

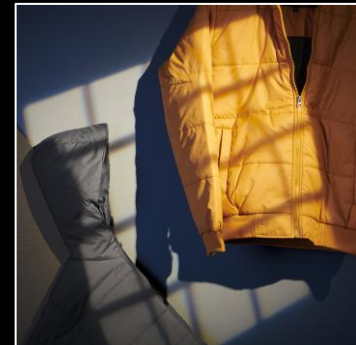
X-ZIPPER
Robust and stylish zipper that glide smoothly.

X-MATERIAL
Made from high quality, windproof and water resistant material to take on any situation.

X-POCKETS
Adding to your glam with the stylish pockets placed at just the right spots.

X-FACTOR
PUFFER JACKET

New Category Focus: Winterwear / Jackets / Blazers





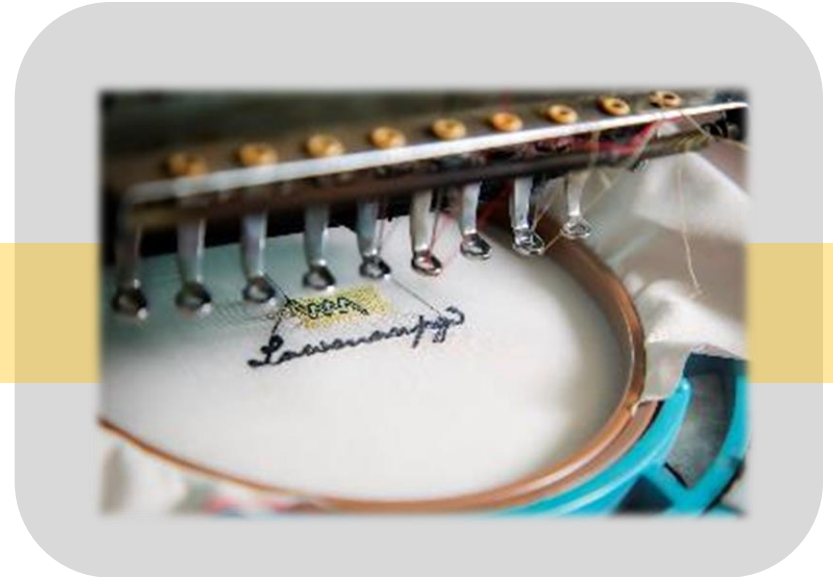
Additions : Accessories Play as a Brand Extension



The accessories wing of KKCL, "Additions" offers lifestyle products such as deodorants, watches, wallets, belts and innerwear

2 Manufacturing Excellence

Market dynamics paves the way for Creator's market – Manufacturing back in focus



Manufacturing Excellence

- **Tech-led manufacturing capabilities** : State-of-the-art technology in manufacturing denims with units equipped with advanced machinery, helping us offer the best products to our customers
- **Best in class Washing Facility:** Key Factor to Denim Manufacturing with high compliances
- **Assisted by international professionals to lead our research and technology wing** allowing us to **develop new products** and improving existing product range
- **Balanced approach towards a mix of in-house manufacturing and outsourcing** considering keeping the key functions within control to manage quality and costs
- Years of Experience in the field of manufacturing has given them a strong acumen in terms of **managing supply chain smoothly** - Especially during the time of raw material price volatility, **Company's cash positions** has played to its advantage
- All KKCL manufacturing facilities are certified ISO 9000:2008 and the Vapi facility is additionally certified ISO 14001: 2004



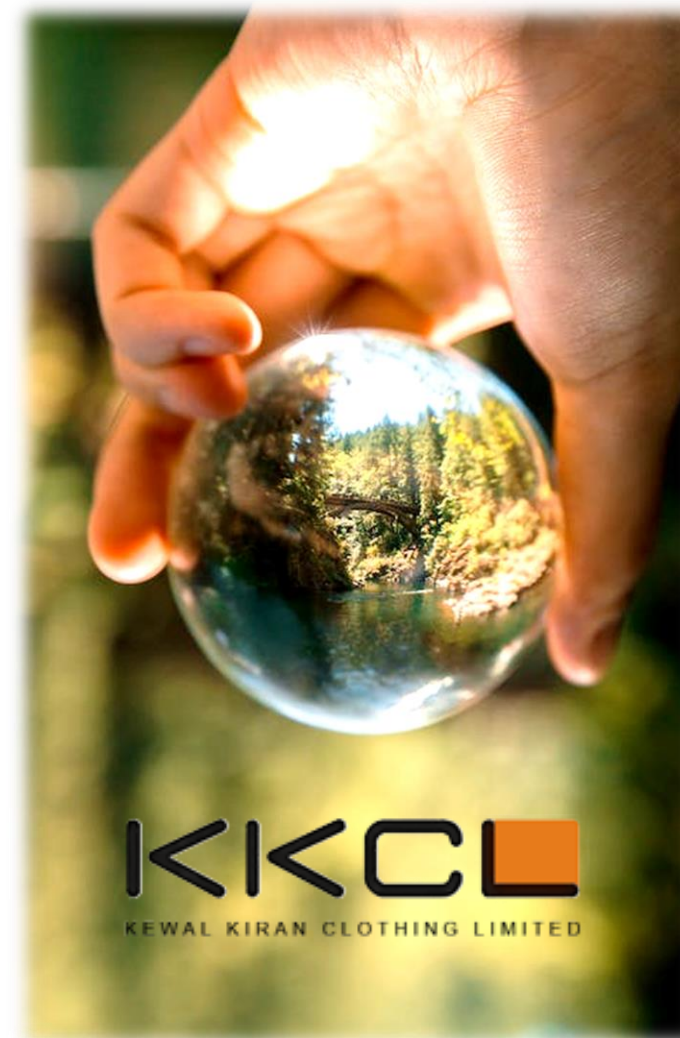
Designing – Procurement – Washing – Stitching – Labelling – Packing – Retail



Robust Manufacturing Setup
 – Giving it a “Good control over product costs factor and Quality”

Coupled with Environment Friendly Practices

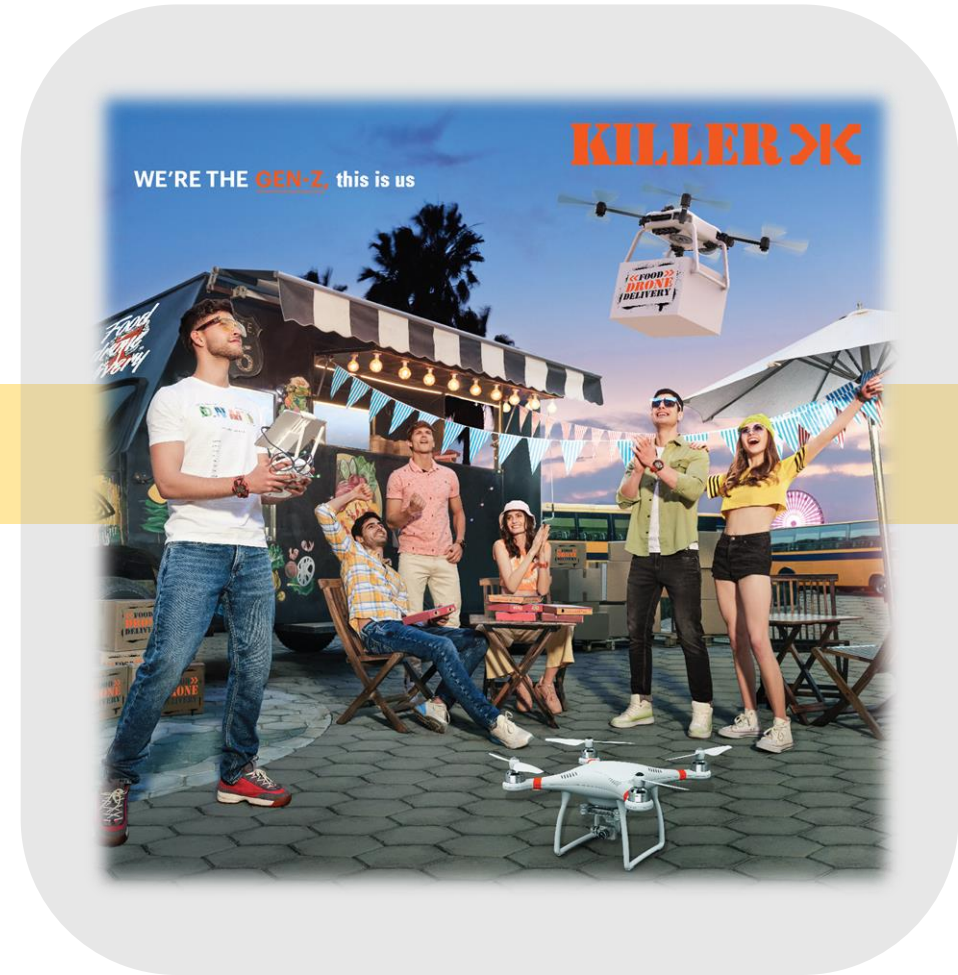
- Use of High end Machines with an objective to Conserve Water, Purify Chemicals and save resources like time and energy
- Adopt certified green chemicals, latest blue technology and energy conservation initiatives to be one of the best environment friendly organisations
- Use of Ozone System for Denim Wash : (i) Water Saver (ii) Stain remover with less water and (iii) purify chemicals used during denim manufacturing



3

Widespread Distribution

Brand recognition driving market "Pull Strategy" – playing it with a flexible profit oriented & balanced market strategy



Strategic Widespread Presence

Exclusive Retail Store Count

438 EBOs

** As on December 31, 2022*



MBO Presence

Widespread MBO presence through traditional Distribution Channel : 80+ Distributors covering ~4,000+ MBOs across India

Large Format Stores

Select Key Stores: Reliance Retail, Shoppers Stop, Max, Lifestyle, & Others – 2200+ counters across regions

Multiple E-Commerce Portal Presence

Flipkart / Myntra

Amazon



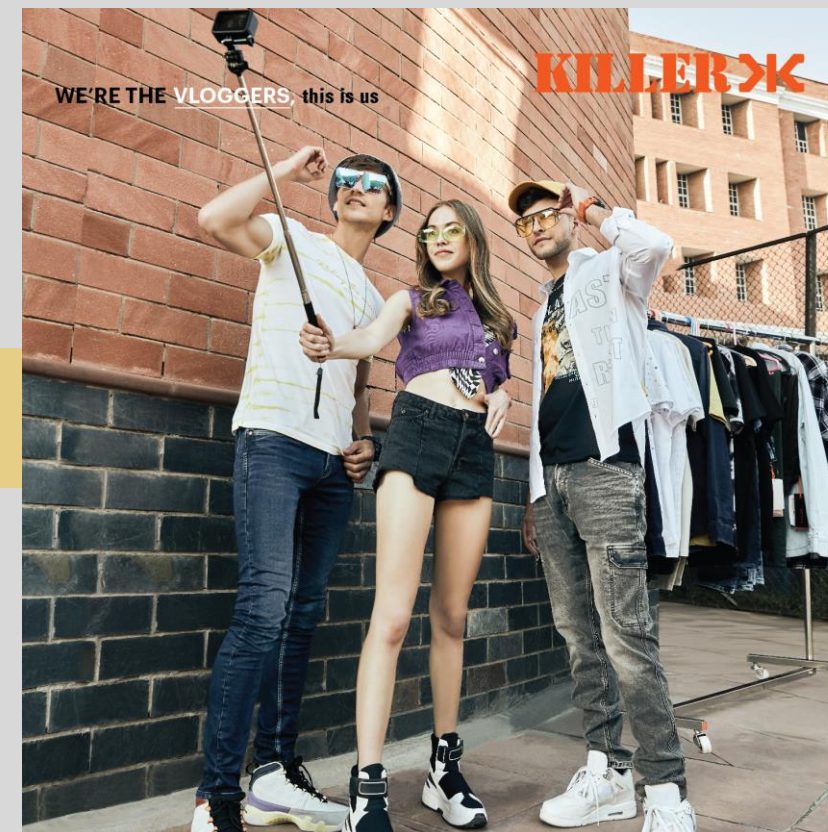
Extensive footprint of directly operated and franchise stores, along with a presence in large format stores, carefully selected multi-brand outlets (MBOs)

4

Financial Sustainability

Balanced Profitability driven Business Growth

-
-
-
-



Company Driven by Inherent Financial Acumen

- **Simplicity in Business working** : Focused Balanced Approach striving towards Profitability driven business growth
- **Success Driven Philosophy with a Cautious Approach** : Follow prototype model with an objective to make "Small to Big"
- **Financial Sustainability driven Decision Making** : Key Driver for achieving the **3 Key "S"** of Business
 - Business **Stability**
 - Business **Sustainability**
 - Business **Scalability**
- **Inclusive Business Culture** : Being considerate towards all key stakeholders
 - Customers
 - Human Resource (Employees)
 - Suppliers
 - Channel Partners
 - Shareholders
 - Bankers



Robust Balance Sheet Strength

Cash Rich Company : War chest for Growth

+

Provisioning Practice for Business Cushion



Consistently Profitable with rich Dividend Payment History

Profit & Loss

Particulars (₹ In Cr)	FY18	FY19	FY20	FY21	FY22
Revenue from Operations	461.9	502.4	529.7	302.7	607.6
COGS	240.5	241.2	262.1	180.1	358.7
Employee Expenses	65.1	75.1	71.5	52.6	79.8
Administrative & Other Expenses	30.7	32.8	33.1	32.8	35.4
Selling & Distribution Expenses	27.5	40.9	68.0	18.6	33.7
EBIDTA	98.2	112.3	95.1	18.7	100.0
EBIDTA Margin	21.3%	22.4%	18.0%	6.2%	16.5%
Other Income	21.1	22.0	17.5	17.0	16.9
Depreciation & Amortisation	5.8	8.1	8.2	6.7	7.0
EBIT	113.5	126.3	104.4	29.0	109.9
EBIT Margin	23.5%	24.1%	19.1%	9.1%	17.6%
Finance Cost	5.0	6.9	8.8	6.8	4.5
Profit before Tax	108.6	119.4	95.6	22.2	105.3
PBT Margin	22.5%	22.8%	17.5%	6.9%	16.9%
Tax	35.3	39.0	22.5	2.8	23.7
PAT	73.3	80.3	73.0	19.4	81.6
PAT Margin %	15.2%	15.3%	13.3%	6.1%	13.1%

Balance Sheet

Particulars (₹ Cr)	As at Mar 2022	As at Mar 2021
ASSETS		
Non-Current Assets		
Property, plant and equipment	84.4	80.8
Capital work-in-progress	0.9	1.0
Investment Property	1.3	1.3
Other Intangible Assets	0.3	0.2
Financial Assets		
Investments	27.3	21.9
Other Financial Assets	15.3	18.7
Deferred Tax Assets (Net)	0.4	-
Other Non Current Assets	0.3	2.9
Total - Non-Current Assets	130.1	126.8
Current Assets		
Inventories	113.0	50.6
Financial Assets		
Investments	118.5	109.0
Trade Receivables	170.9	131.0
Cash and Cash Equivalents	191.2	153.6
Bank balances other than Cash & Cash equivalents	0.6	0.1
Other Financial Assets	2.4	1.3
Other Current Assets	16.4	10.0
Total - Current Assets	613.0	455.6
TOTAL - ASSETS	743.1	582.3

Standalone basis

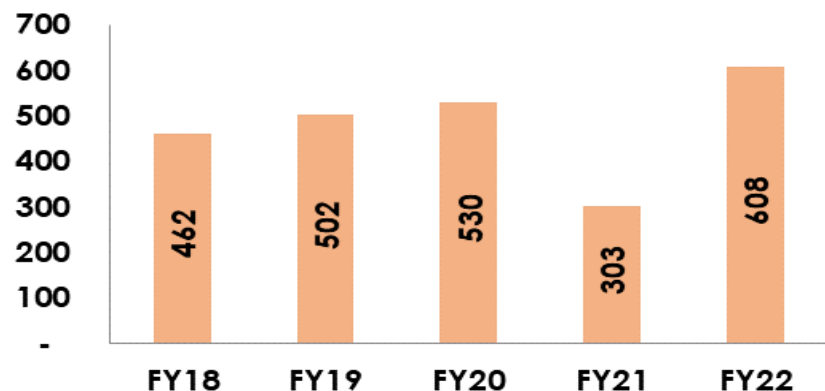
Particulars (₹ Cr)	As at Mar 2022	As at Mar 2021
EQUITY AND LIABILITIES		
Equity		
Equity Share Capital	61.6	12.3
Other Equity	416.6	420.6
Total - Shareholders' funds	478.2	433.0
LIABILITIES		
Non-Current Liabilities		
Financial Liabilities		
Lease Liability	4.4	3.1
Provisions	0.1	0.1
Deferred Tax Liabilities (Net)	-	2.9
Total - Non-Current Liabilities	4.5	6.1
Current Liabilities		
Financial Liabilities		
Borrowings	76.6	46.4
Trade Payables	53.4	36.5
Lease Liabilities	0.9	0.3
Other Financial Liabilities	14.5	13.6
Other Current Liabilities & Provisions	115.1	46.4
Total - Current Liabilities	260.5	143.3
TOTAL - EQUITY AND LIABILITIES	743.1	582.3

Key Financial Indicators

Standalone basis

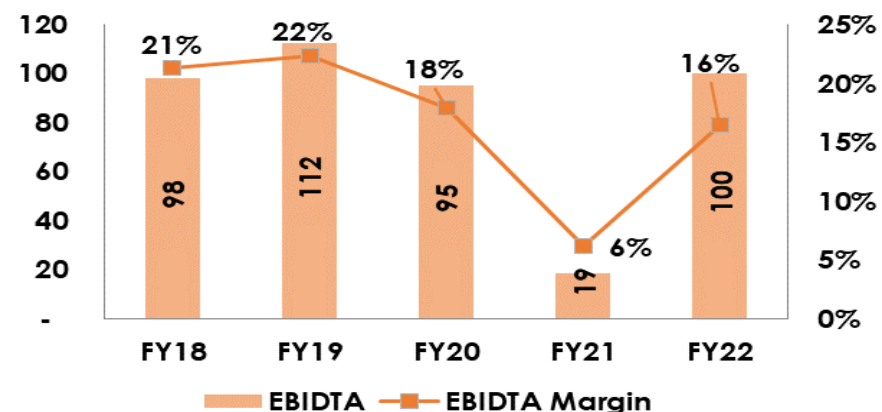
Operating Income

₹ Cr



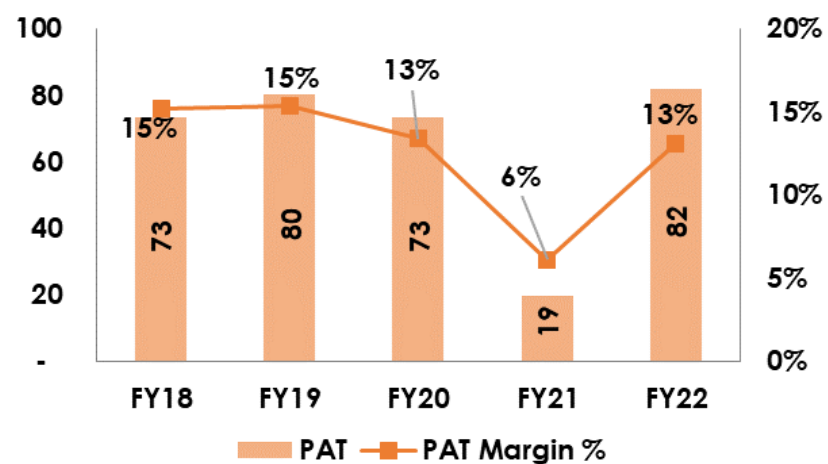
EBIDTA

₹ Cr



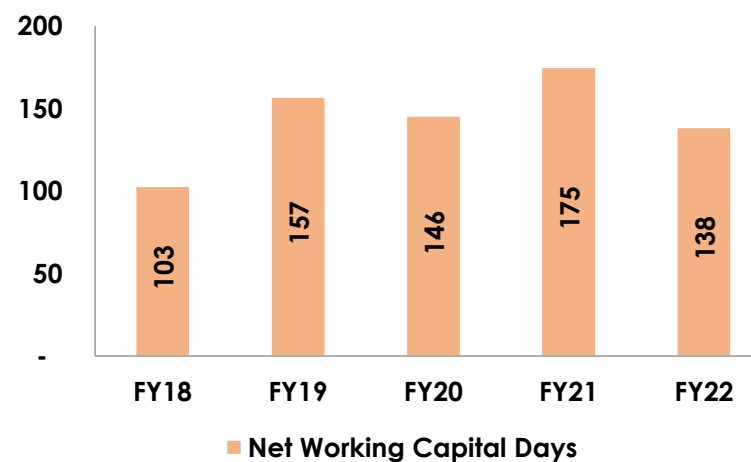
PAT

₹ Cr



Net Working Capital Days

In Days

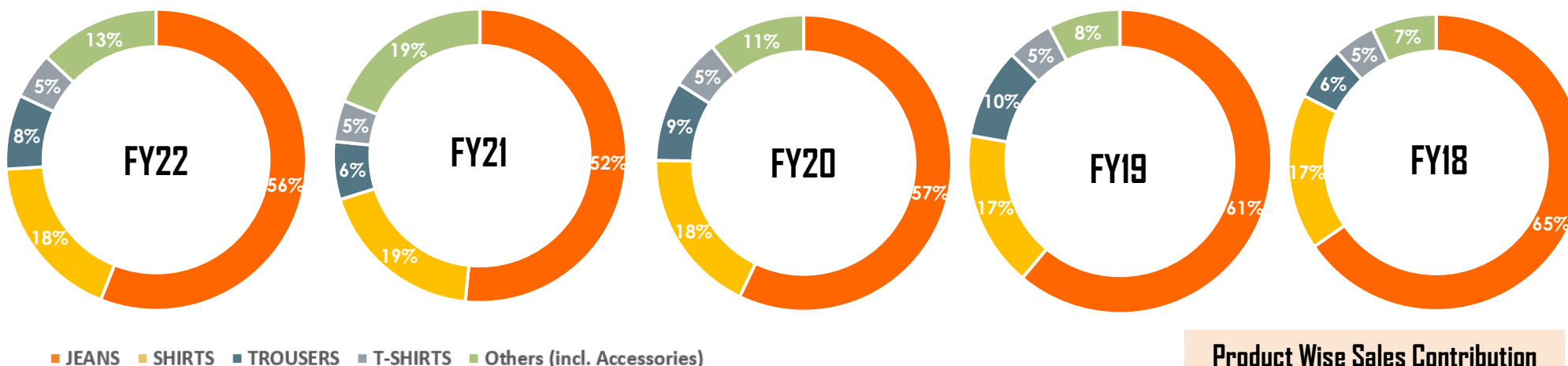


Channel wise Sales Performance

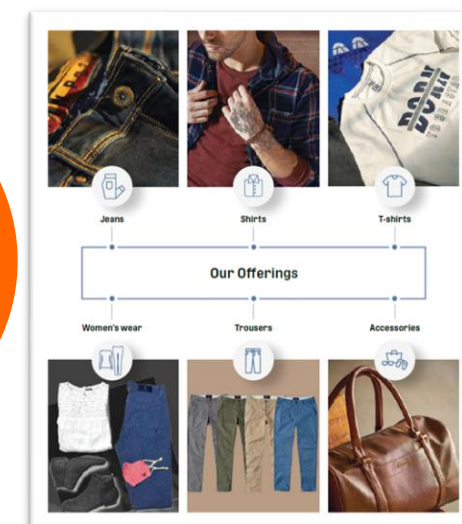
	FY22	FY21	FY20	FY19	FY18
Retail	42%	39%	43%	41%	34%
Non-Retail	36%	36%	42%	42%	51%
Others	22%	25%	15%	17%	15%



Product Category Sales Performance



Product Wise Sales Contribution



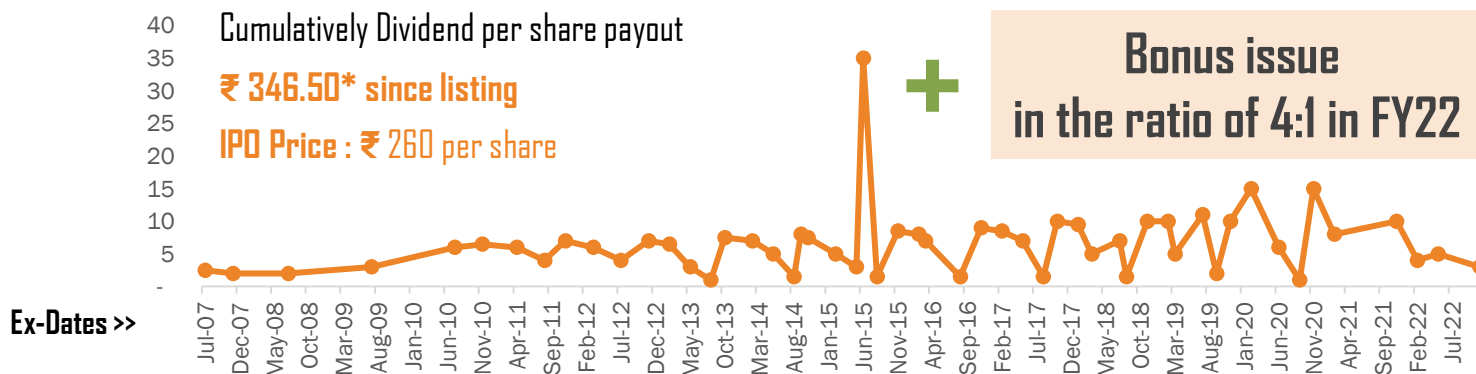
Qty Sales / Sales Realisation	FY22	FY21	FY20	FY19	FY18
Apparel and Lifestyle Accessories/Products Sales Qty (Units in Lakhs)	89.77	57.77	82.95	84.00	58.69
Apparel Units % of Total Qty Sales	76%	61%	64%	61%	79%
Sales Realisation (₹ per unit)	674	520	633	591	779

Consistent Performance since Listing



Shareholders Information - Consistent Performance since Listing

Consistently Rewarding Shareholders - Dividend Payout

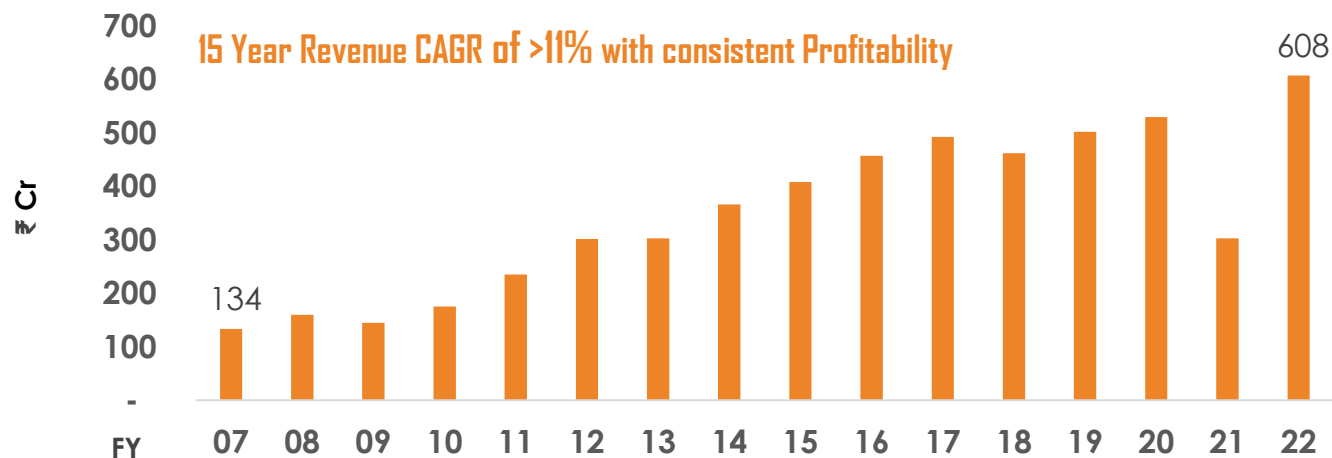


Particulars - Current Market Information			
CMP *	(₹)	:	515.20
52-Week High	(₹)	:	592.00
52-Week Low	(₹)	:	180.20
CMP (Adjusted for Bonus Issue - Pre Bonus)	(₹)	:	2,576
IPO Price	(₹)	:	260
Market Capitalisation*	(₹ Cr)	:	3,175

* FY22 & Onward - Impact due to expanded equity capital on account of bonus issue in the ratio of 4:1 in FY2022. Includes ₹ 10 DPS before bonus and ₹ 12 DPS after bonus issue

* As on January 19, 2023 (www.nseindia.com)

Robust Growth in Business



Thank You



Kewal Kiran Clothing Limited

460/7, I.B. Patel Road, Kewal Kiran Estate,
Goregaon (East), Mumbai 400063

Investor Relations Advisor



Marathon Capital Advisory Private Limited

Rahul Porwal (99675 76900 / rahul@marathoncapital.in)

Bhavin Ranawat (9819345619 / bhavin@marathoncapital.in)

