

CS/BSE/NSE/PR/2017-2018

June 1, 2017

To
The Manager
Listing Department
National Stock Exchange of India Limited
Exchange Plaza, Bandra Kurla Complex
Bandra (E), Mumbai – 400 051

To
The General Manager
Department of Corporate Services
BSE Limited
25th Floor, P. J. Towers,
Dalal Street, Mumbai - 400 001

Stock Code: SUVEN - EQ

Stock Code: 530239

Dear Sir/Madam,

Sub: Annual Investors Conference on 05th June, 2017


.....

We wish to inform you that senior management team of Suven Life Sciences is giving corporate presentation on 5th June, 2017 in **“Annual Investor Conference Trinity India – 2017”** with fund managers and analysts meet organized in Mumbai by B&K Securities from 5th to 7th June, 2017.

Please find enclosed Corporate Presentation.

This is for your information and record.

Thanking you,
Yours faithfully,
For **Suven Life Sciences Limited**

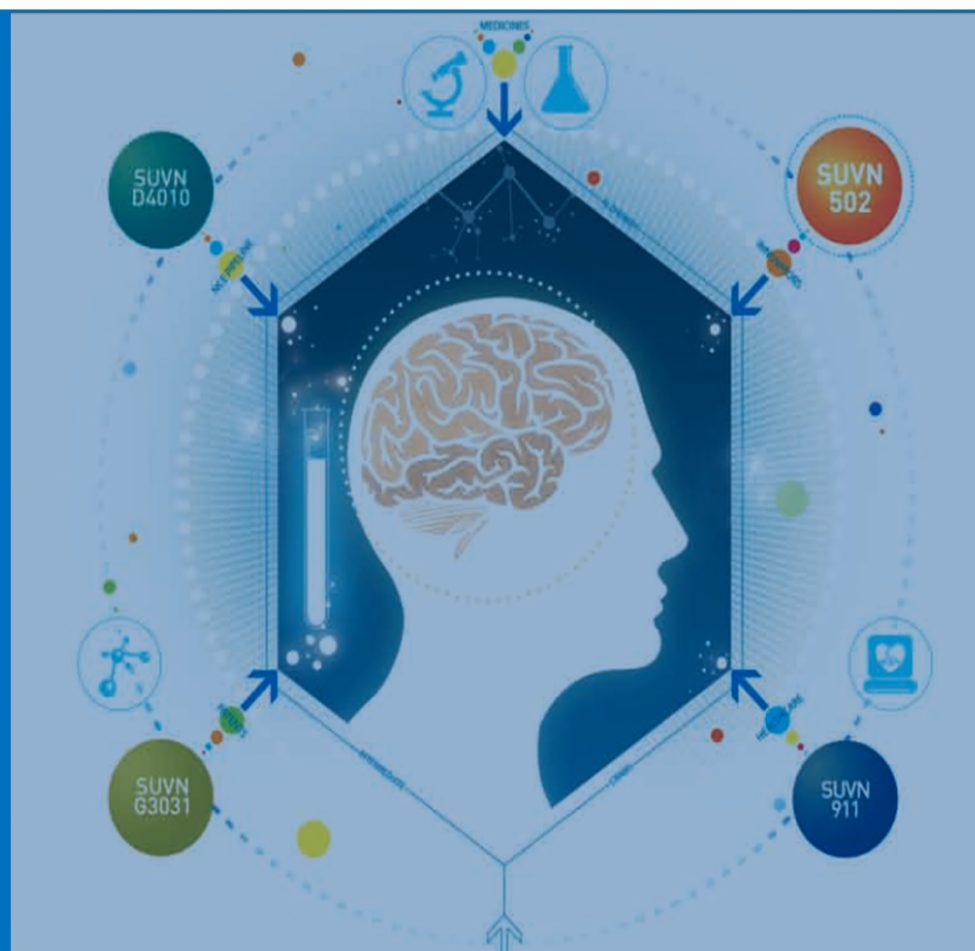

K Hanumantha Rao
Company Secretary

Suven Life Sciences Limited

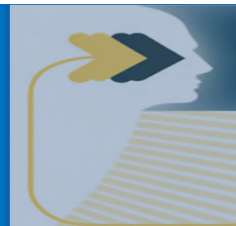
Registered Office: 8-2-334 I SDE Serene Chambers I 6th Floor Road No.5 I Avenue 7
Banjara Hills I Hyderabad – 500 034 I Telangana I India I CIN: L24110TG1989PLC009713
Tel: 91 40 2354 1142/ 3311/ 3315 Fax: 91 40 2354 1152 Email: info@suven.com website: www.suven.com

Suven Life Sciences Limited

**B&K's Annual Conference – 'Trinity India 2017'
on June 5, 2017 – Mumbai**

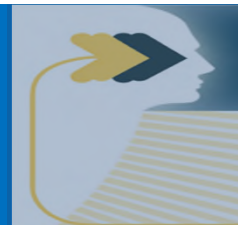


Safe Harbor Statement



Except for historical information, all of the statements, expectations and assumptions, including expectations and assumptions, contained in this presentation may be forward-looking statements that involve a number of risks and uncertainties. Although Suven attempts to be accurate in making these forward-looking statements, it is possible that future circumstances might differ from the assumptions on which such statements are based. Other important factors which could cause these statements to differ materially including outsourcing trends, economic conditions, dependence on collaborative partnership programs, retention of key personnel, technological advances and continued success in growth of sales that may make our products/services offerings less competitive; Suven may not undertake to update any forward-looking statements that may be made from time to time

Table of Contents



1



Company Overview

2



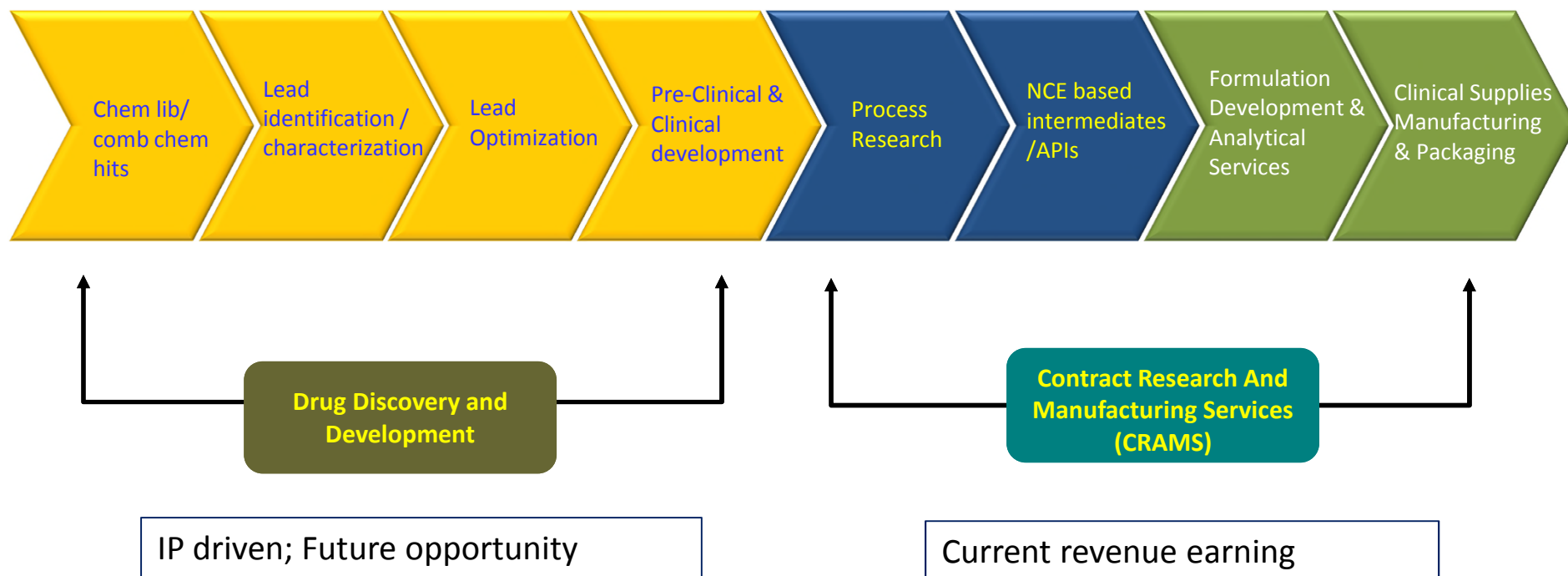
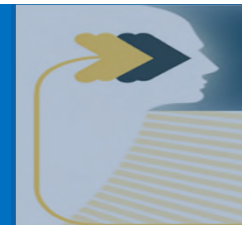
Our Business Strategy

3

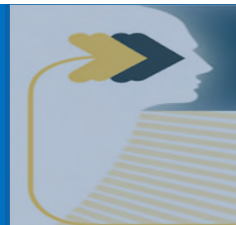


Our Financial Approach

Business Model



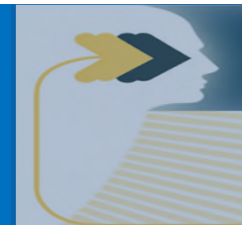
Vision and Mission



- Providing world-class R&D solutions for Global Life Science companies with efficiency in cost, quality and speed
- Become a leading company focused on treatments for unmet medical needs in Mental Health
- Health for patients and value for partners



Our Evolution

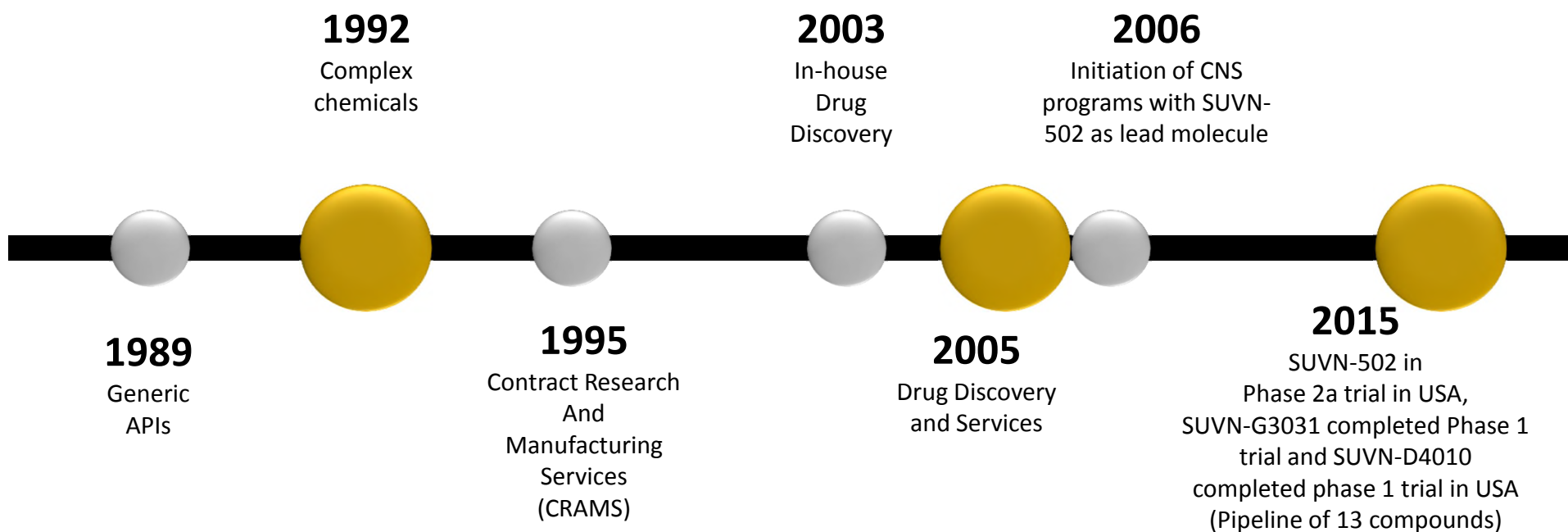


- Pioneer in CRAMS

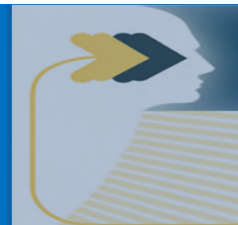
- Diverse and entrenched business relationships

- Proven ability and expertise

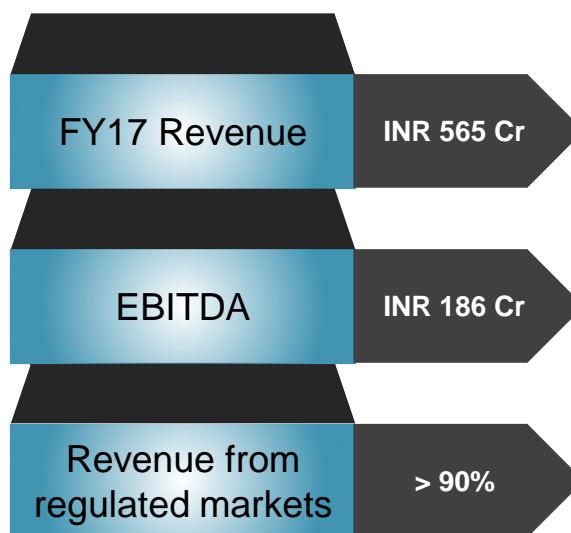
- Well integrated CRAMS and Discovery services



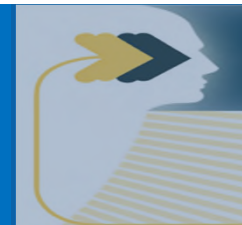
Company Overview



- Profitable and dividend paying since listing in 1995 on the NSE and BSE
- Established Contract Research And Manufacturing Services (CRAMS) - Leader and innovator for NCE based intermediates
- **110+3** Number of active CRAMS projects
- World class infrastructure, equipment and models with over 900 employees
- Robust financials and a healthy balance sheet
- Relationships with over 22 global pharmaceutical companies
- USFDA inspected facilities
- Current total cash and cash equivalents ~ INR 305 Cr.



Suven Facilities



**Vizag, Andhra Pradesh,
India**



- 307 KL reactor volume
- 3KL to 12KL Reactors
- GL/SS (45No's)
- API's/Advanced Intermediate's/CMO

**Pashamylaram, Telangana,
India
SUVEN API & Formulation
Facility**



- 120 kL reaction volume
- 50L – 6000 L GL/SS (45)
- API Manufacturing
- Biopharmaceutical Research (GLP)
- Formulation R&D

**Banjara Hills, Hyderabad,
India
Corporate Office**



**Jeedimetla, Telangana, India
SUVEN R&D–Pilot Plant**

- Process Research
- Discovery R&D, Analytical R&D
- Killo lab, 30L CM Reactors (32)
- 50L – 4000 L GL/SS

- 300 CM reactors (93)
- 500L to 10 KL GL/SS
- GMP Intermediates

**Suryapet, Telangana, India
SUVEN Intermediate Mfg.
Facility**

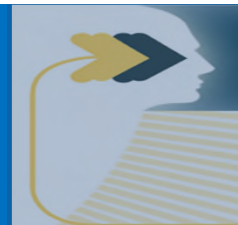


**SUVEN USA, New Jersey
Business Office**

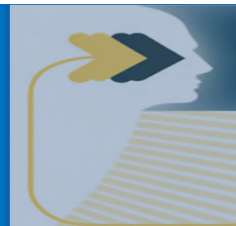
- Business Development
- Project Management
- Intellectual Property Management



Our Customer Relationships



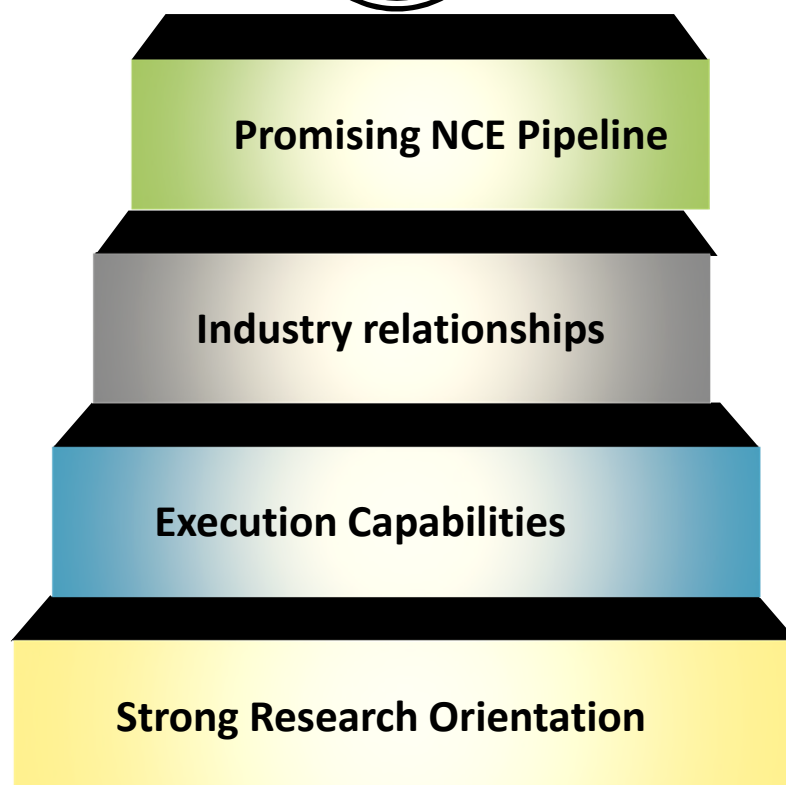
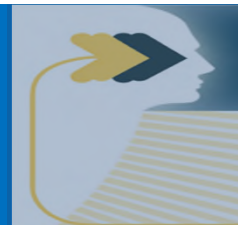
Our Focus



A full fledged bio-pharmaceutical solutions provider for global pharmaceutical companies

- 1** Focused on value addition in research and development
- 2** NCE based CRAMS
- 3** Investing in R&D over a decade specializing in CNS segment

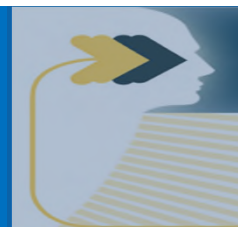
Business Drivers



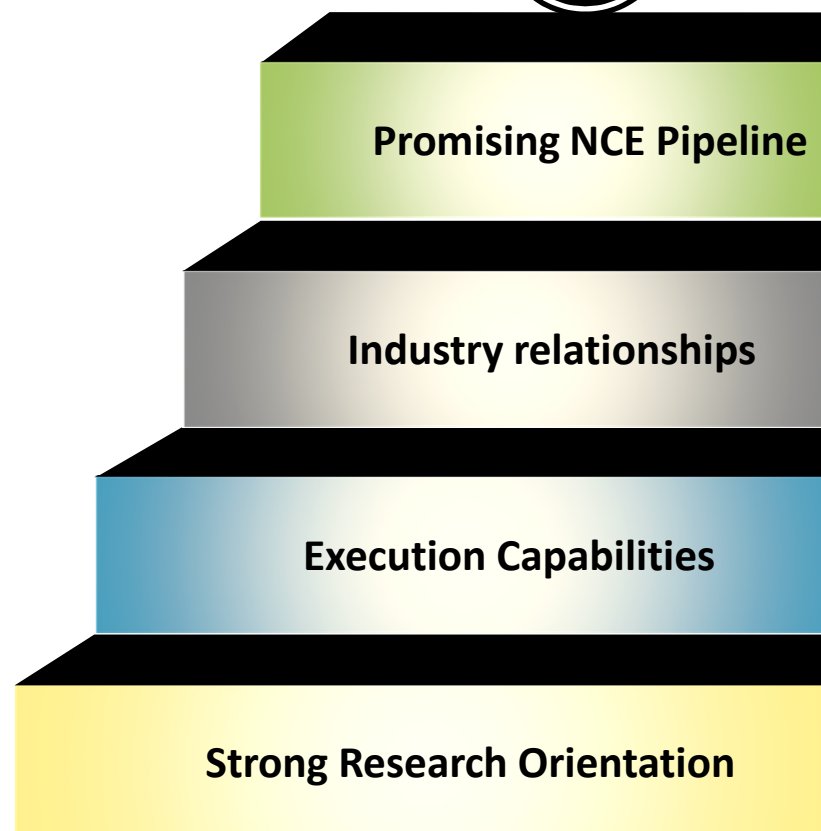
Focus on driving quality research projects for clients

In search of new CNS therapies for better living

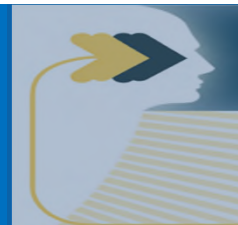
Business Drivers



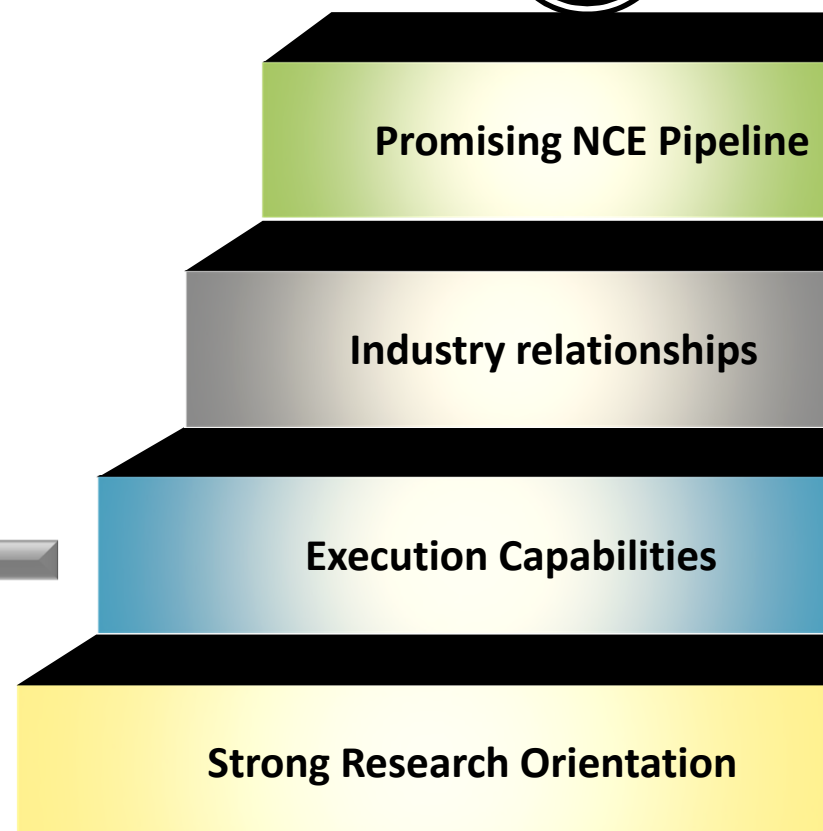
- An integrated research service provider with unmatched capabilities
- Well qualified research team of 375+ scientists of which 30 are PhD holders
- Undertaken 775+ CRAMS projects since inception
- Pioneer in CRAMS business – research to execution



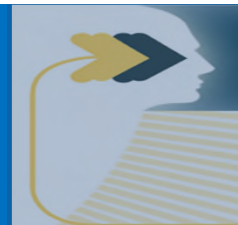
Business Drivers



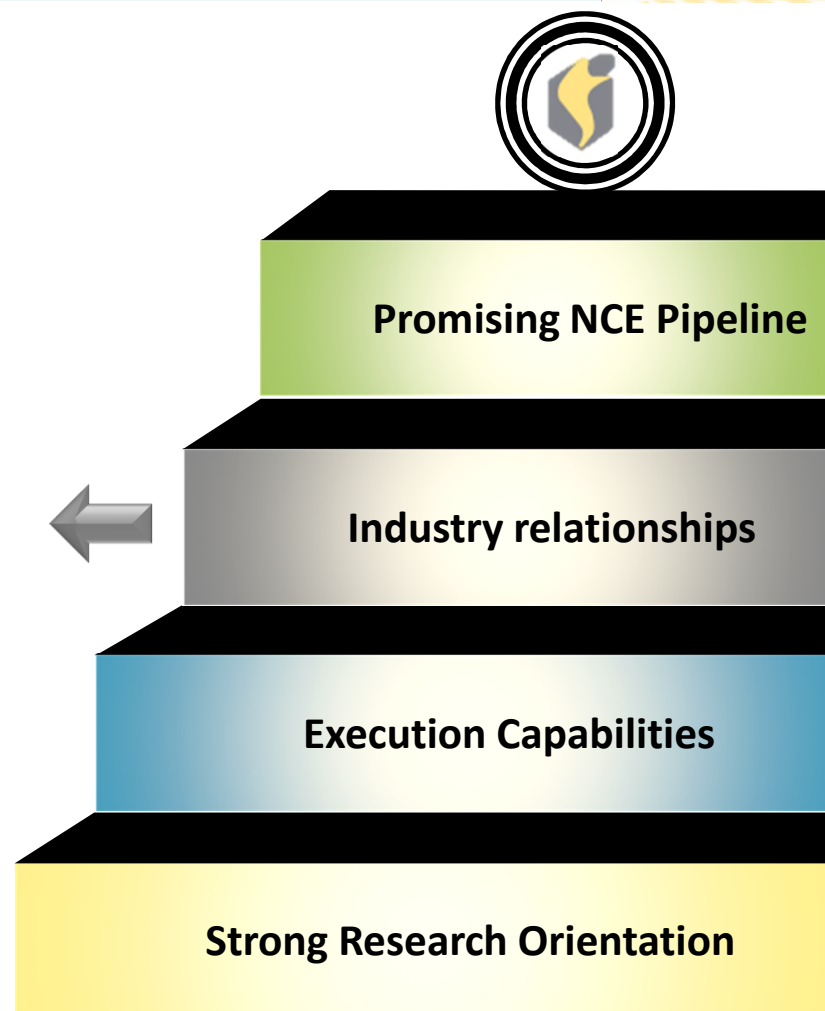
- Present across the entire CRAMS value chain – intermediates & APIs
- Leveraging on research capabilities to delivering NCE research
- State of the art facilities located across



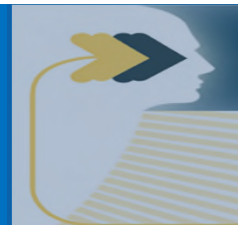
Business Drivers



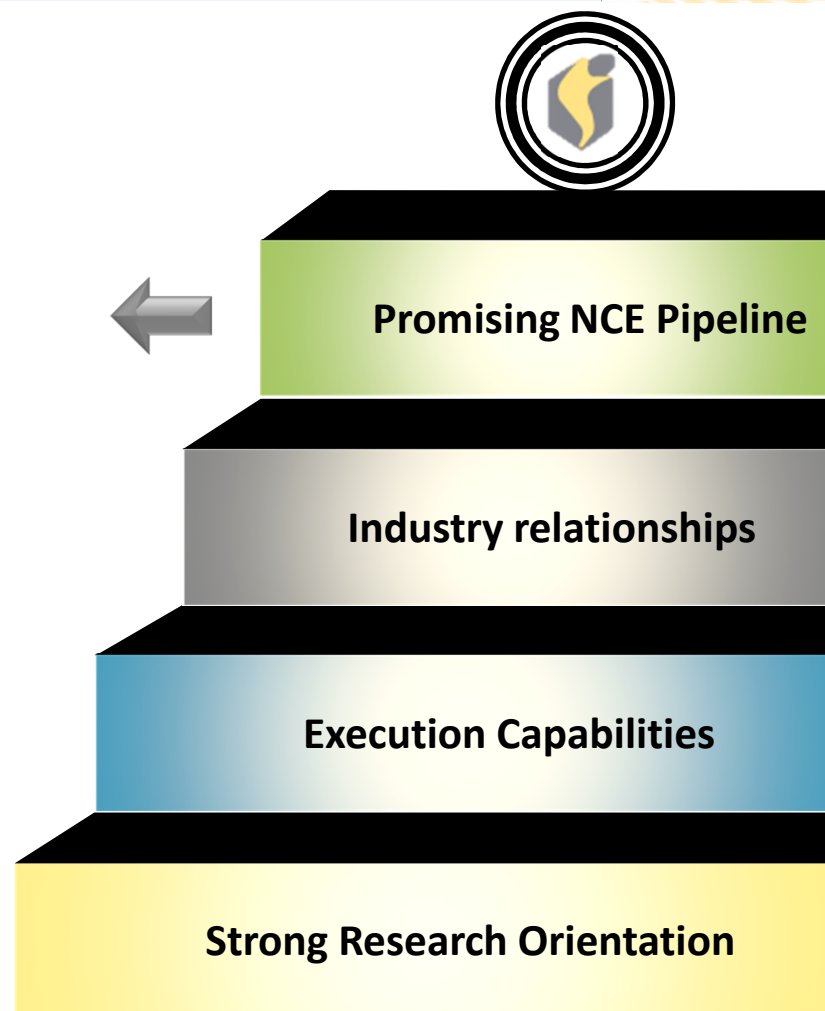
- Repeat business owing to long standing relationships with global companies
- Long term commercial supply opportunity with the launch of product by global sponsors
- Working with innovator companies in developed markets having stringent regulations – reflection of our research skills



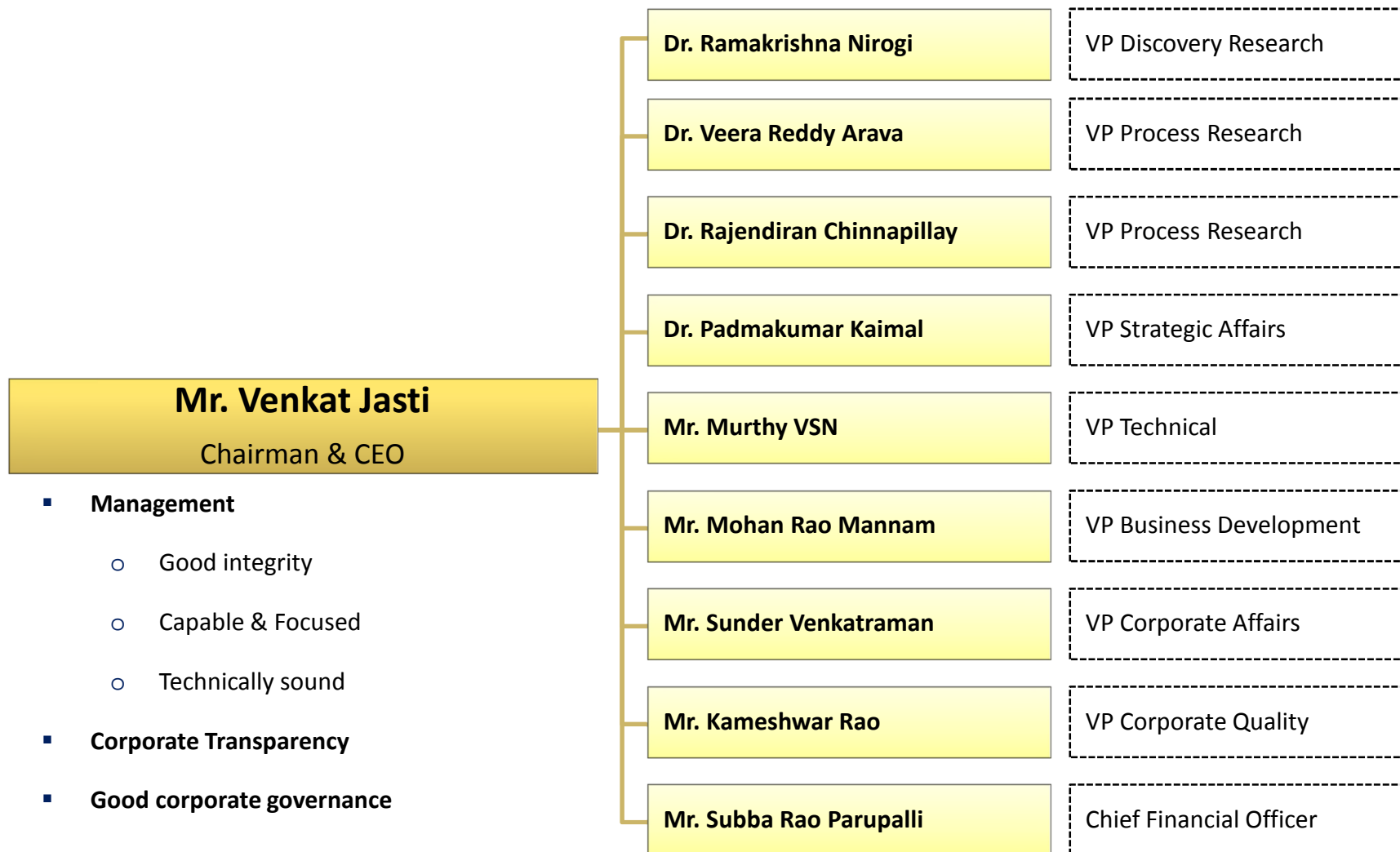
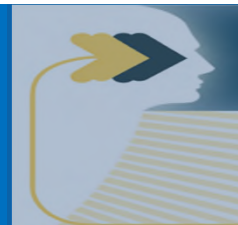
Business Drivers



- One of the few players in the world in the CNS segment research
- Built strong intellectual capabilities in CNS segment since 2005.
- Globally CNS is the second largest and fastest growing segment
- A single successful molecule offers significant opportunity
- Self funded NCE research pipeline of 13 molecules



Suven Management Team

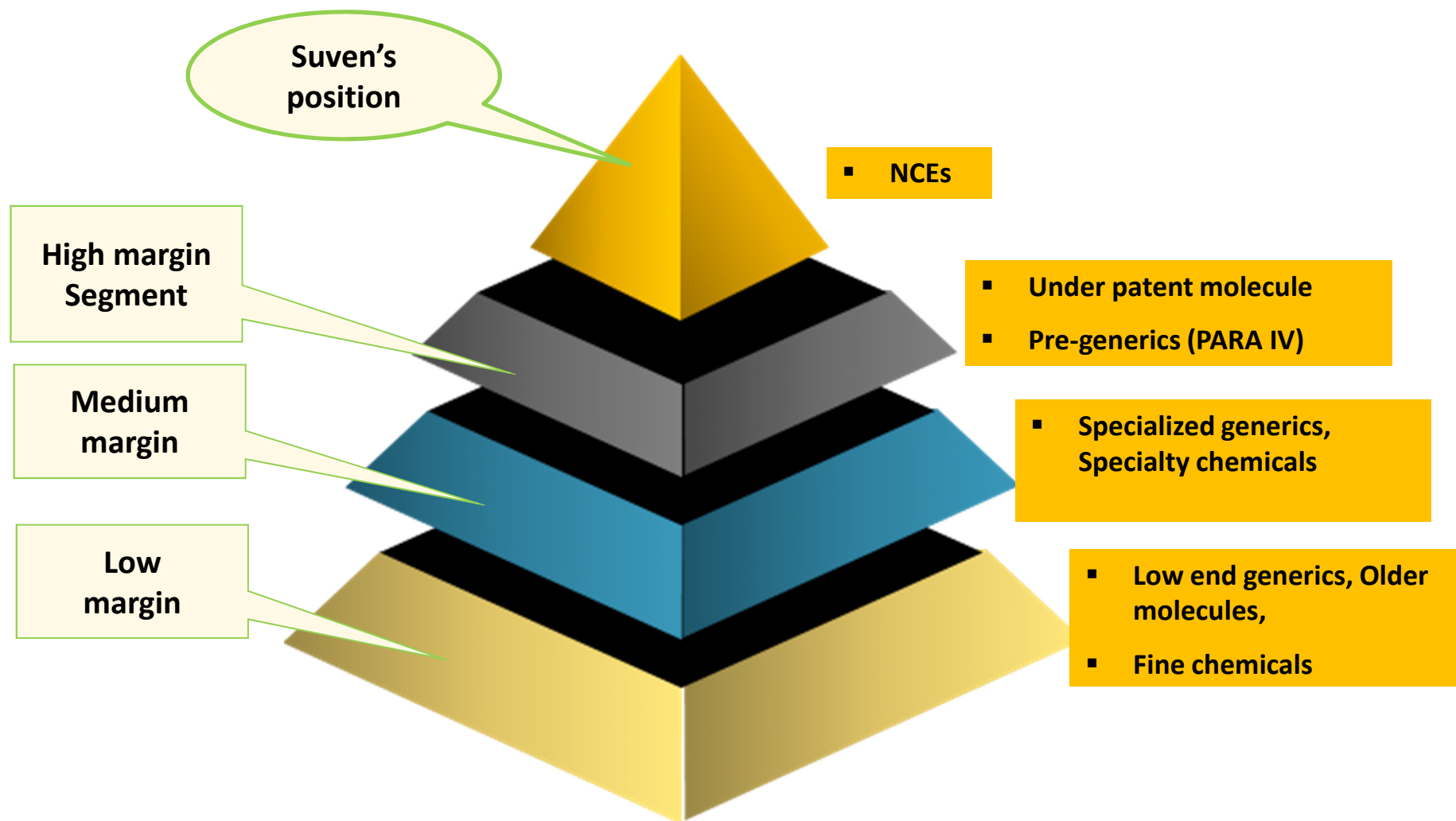
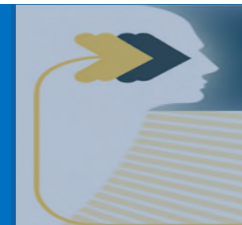


In search of new CNS therapies for better living

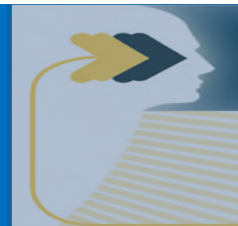
Our Business Strategy

CRAMS

The CRAMS Value Chain

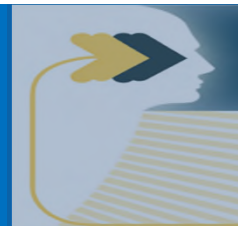


Suven CRAMS Revenue Profile



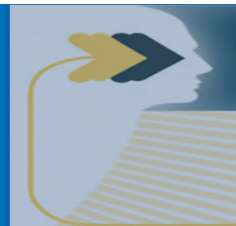
- Sales growth with strong customer relationship
- Multi-year NCE based contract research for chemistry development for global sponsors.
- Long term commercial supply opportunities
- Pipeline of CRAMS projects:
 - Phase 1 - 70
 - Phase 2 - 38
 - Phase 3 – 2
 - Commercial – 3

Suven CRAMS Market Opportunity



- Customer focused long standing relationships for various early phase to commercial chemistry development
- Geographically dispersed in global markets (USA, Europe, Japan, Korea and Israel)
- Niche products DMFs and ANDAs for regulated markets
- Growing opportunity for CRAMS and drug discovery services

CRAMS - Key Risks and Challenges

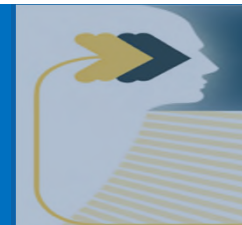


- Sustaining long term relationships with innovator companies
- Potential price fluctuation/attrition
- Likely increase in competition from other Indian/global players
- Potential for lumpiness in revenues and profits

Our Business Strategy

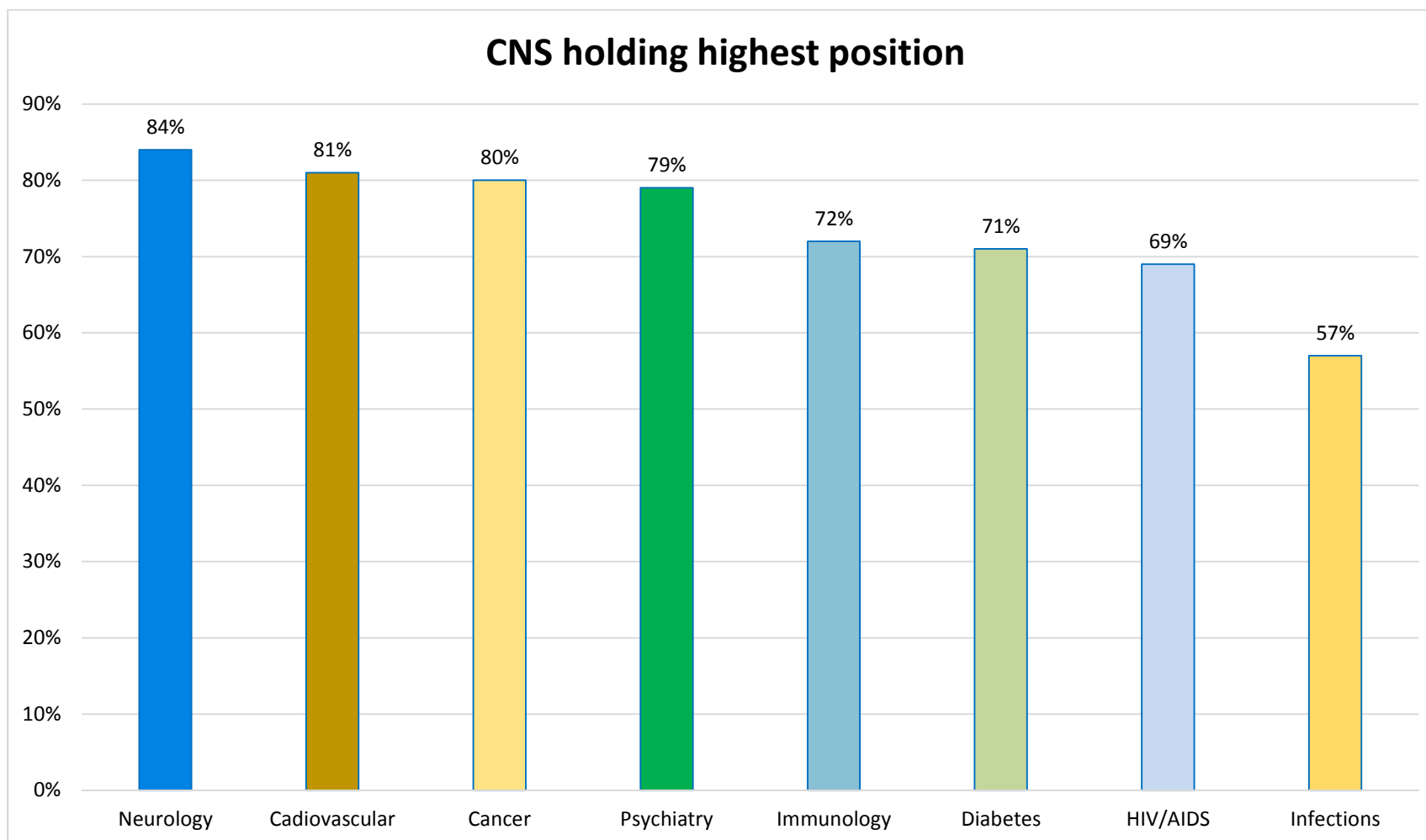
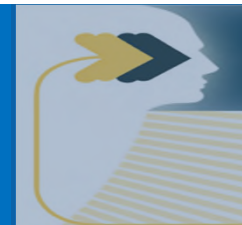
Drug Discovery and Development

Suven's chosen therapeutic area: CNS



- Why CNS?
- Central Nervous System (CNS) market is the Second Largest Therapeutic Category (15%) and it is one of the Fastest Growing segment
- Highly unmet medical need
- More than 200 compounds under development
- Challenges – High attrition during discovery and clinical development
- Highly rewarding – Based on the recent licensing deals in this segment

Potential First-in-Class medicines in selected therapeutic areas in United States

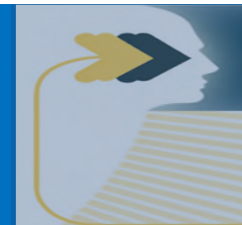


Source: PhRMA 2015 report and article from Analysis Group. Innovation in the biopharmaceutical pipeline: a multidimensional view, January 2013



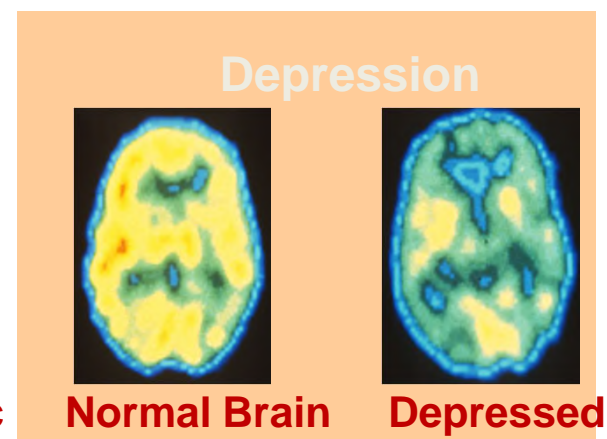
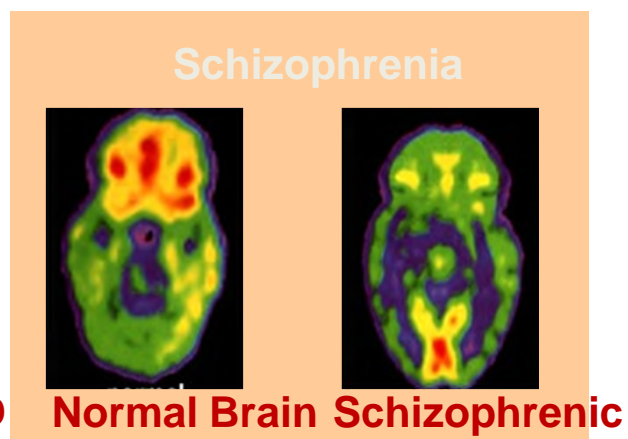
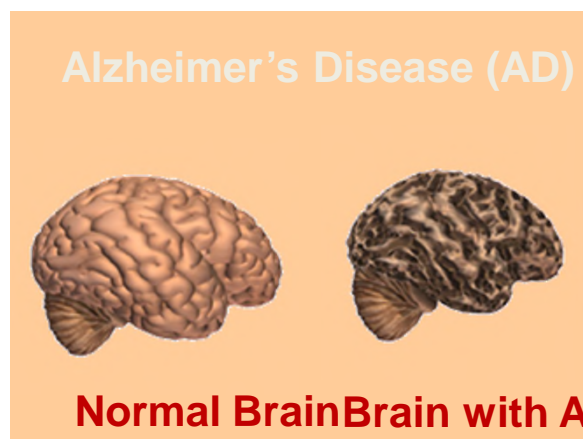
In search of new CNS therapies for better living

In Search of New CNS Therapies



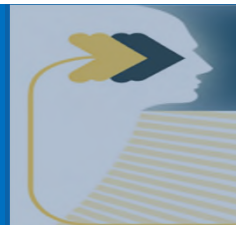
Suven's core focus - Neuroscience

Focused in Neuroscience, the most challenging area in drug discovery



To discover & develop Differentiated Therapeutics
for the treatment of neurodegenerative disorders

In Search of New CNS Therapies



Chosen Therapeutic Targets

Alzheimer's Disease

- ◆ **Potential to be a symptomatic treatment**
 - 5-HT₆ receptor antagonist
 - Histamine H₃ receptor inverse agonist
- ◆ **Potential to be both symptomatic and disease modifying treatment**
 - 5-HT₄ receptor partial agonist
 - M1 receptor positive allosteric modulator

Schizophrenia

- Dopamine D₂, 5-HT_{2A}, SSRI

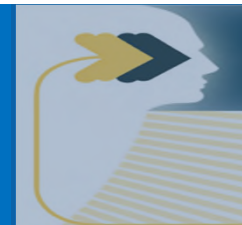
Depression

- Cholinergic $\alpha 4\beta 2$ antagonist





Pain

- Cannabinoid 2 receptor agonist

In Search of New CNS Therapies

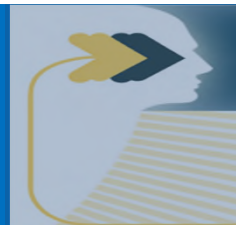


NCE Assets for Partnering

Candidates	Pre-clinical & GLP Tox	Clinical Phase			Indication
		I	II	III	
SUVN-502 5-HT ₆ antagonist					Cognitive Deficits Associated with Alzheimer's Disease
SUVN-G3031 H ₃ inverse agonist					
SUVN-D4010 5-HT ₄ agonist					
SUVN-911 α4β2 antagonist					Depression (MDD)

Potential to address unmet medical needs

Suven's CNS Research



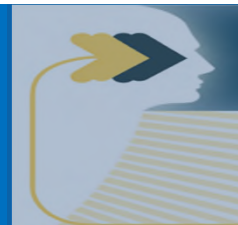
Promising Pipeline with Well differentiated Assets

Novel Mechanisms with First-in-Class Potential

Excellent Probability of Clinical and Regulatory Success

Health for Patients – Value for Partners

In Search of New CNS Therapies

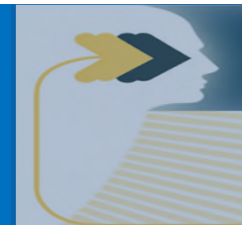


SUVN-502

SUVN-502 is a safe, potent, selective, orally available, brain penetrant and pure *5-HT₆ antagonist* being developed for the symptomatic treatment of Alzheimer's disease

Current Status: Phase 2A POC study in progress - USA

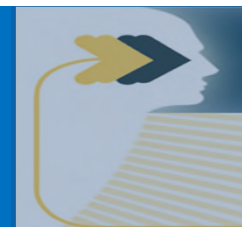
5-HT₆ Antagonists in Clinical Development



SUVN-502 

Company	Compound ID	Indication	Stage of Development
Lundbeck	Lu AE58054 (Idalopirdine)	Alzheimer's Disease	Phase-III
Roivant Neurosciences	RVT-101 (Intepirdine)	Alzheimer's Disease	Phase-III
Suven Life Sciences	SUVN-502	Alzheimer's Disease	Phase-II
Biotie Therapies	SYN120	Parkinson's Disease Dementia	Phase-II

Differentiation from Competitor 5-HT₆ Antagonists (Efficacy)



SUVN-502



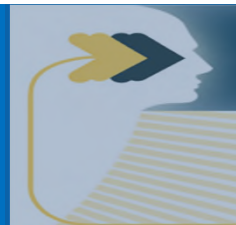
	RVT-101 (Intepirdine)	Lu AE58054 (Idalopirdine)	SUVN-502
Standalone treatment	↑ acetylcholine, enhanced procognitive effects	No effects	↑ acetylcholine, enhanced procognitive effects
In combination with donepezil	↑ acetylcholine, enhanced procognitive effects	↑ acetylcholine, enhanced procognitive effects	↑ acetylcholine, enhanced procognitive effects
In combination with donepezil and memantine	No reports	No reports	↑ acetylcholine, enhanced procognitive effects

Only compound with preclinical POC in combination with donepezil and memantine

In search of new CNS therapies for better living

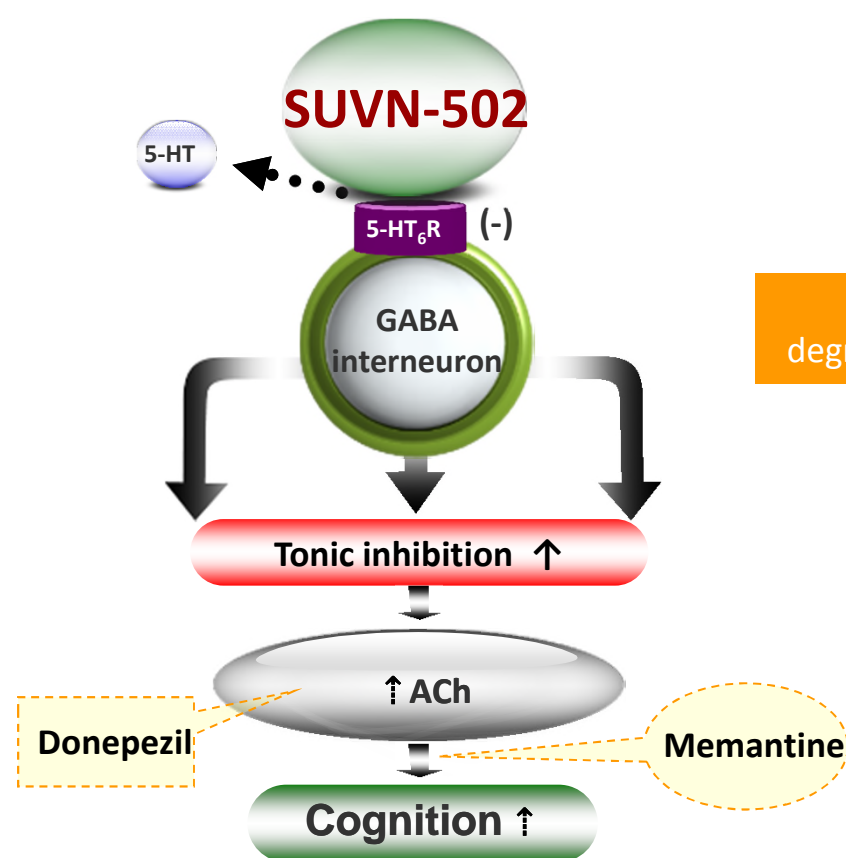
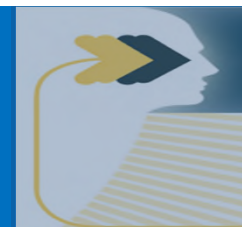


A Well Differentiated Asset



- **Pure 5-HT₆ receptor antagonist (>1200 fold selectivity over 5-HT_{2A} receptor)**
- Potentiates the preclinical efficacy of current SOC for AD treatment
- No gastrointestinal side effects in aged population (Phase I study)
- No liver toxicity in healthy elderly (Phase I MA study)
- No drug-drug interactions and dose limiting toxicity
- No effect of food, gender and age on pharmacokinetics
- Excellent human pharmacokinetics for once a day treatment
- **Well differentiated Asset and Excellent Probability of Clinical Success**

Rationale for Phase 2 Proof of Concept Study

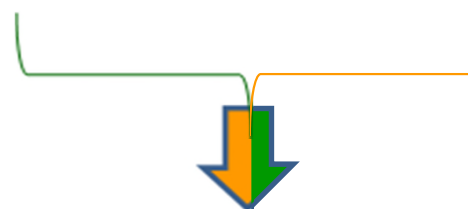


SUVN-502 enhance hippocampal acetylcholine/glutamate release



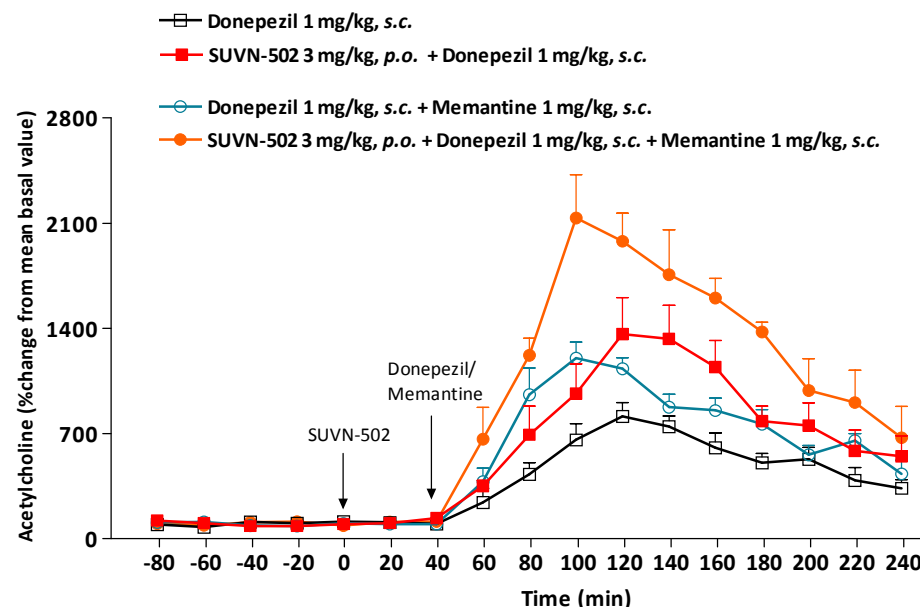
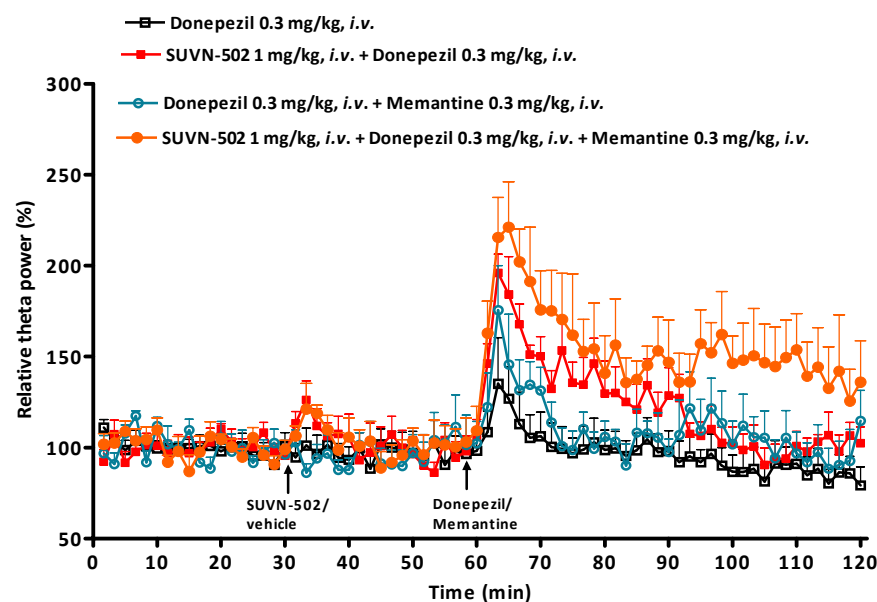
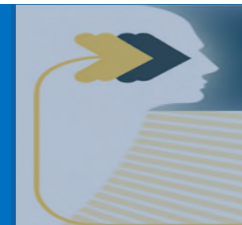
Donepezil blocks degradation of acetylcholine

Memantine protect neurons from glutamate toxicity



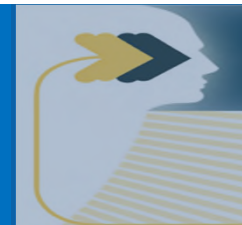
**SUVN-502, Donepezil and Memantine
triple combination
may have greater efficacy and better tolerability**

Rationale for Phase 2 Proof of Concept Study

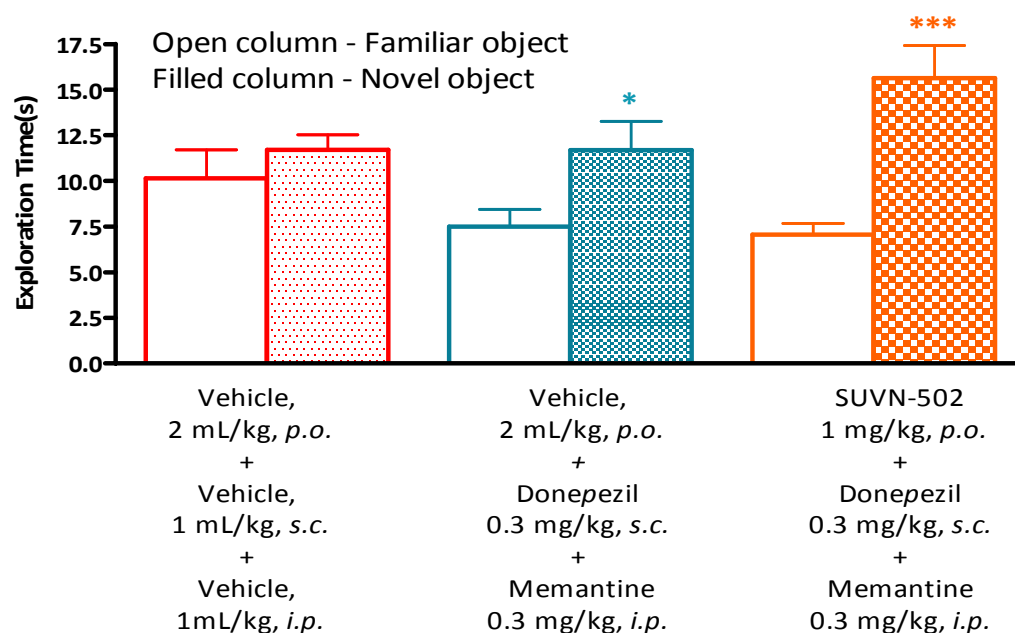


SUVN-502 potentiates the neurochemical and electrophysiological effects of donepezil and memantine combination in rats

Rationale for Phase 2 Proof of Concept Study

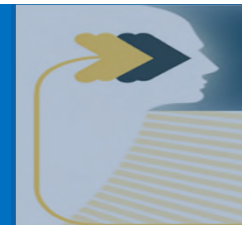


Object Recognition Task (14 days treatment)



- Combination of SUVN-502, Donepezil and Memantine is superior to the Combination of Donepezil and Memantine in preclinical animal models
- The effect observed in preclinical species may translate to efficacy in humans

Phase 2 Study Design

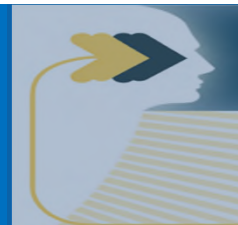


Days	Day -28 to Day -14	Baseline	Week 4	Week 13	Week 26 or Early Term	Week 30 Follow Up
Visits	1	2	3	4	5	6
	Screening	<-----Double-Blind Treatment Period-----> Total ~ 537 Moderate AD subjects Placebo or SUVN-502 (low and high dose) All treatments once daily				Single-Blind Placebo
	<-----Concomitant Alzheimer's Disease Therapy-----> Donepezil (10 mg) & Memantine 10 mg twice daily [or Namenda XR (28mg)] or Namzaric™ (28/10):					

Primary efficacy end point : ADAS – Cog 11

In search of new CNS therapies for better living





US FDA Regulated

Primary Outcome Measure ADAScog-11

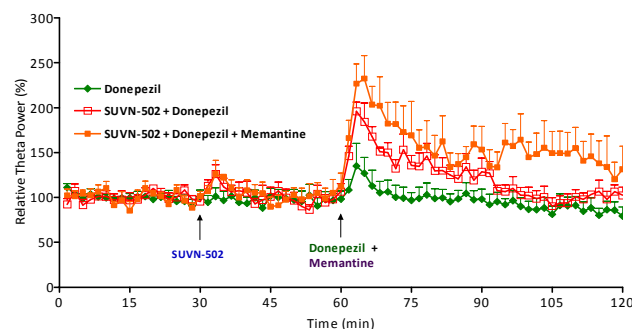
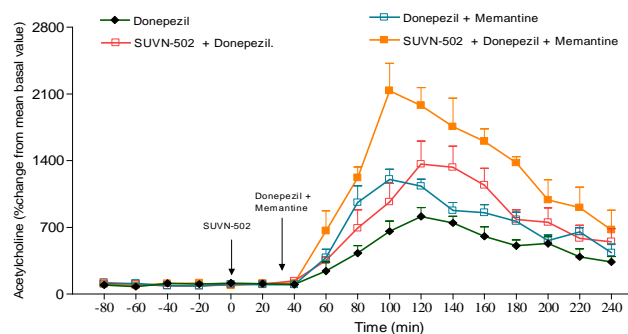
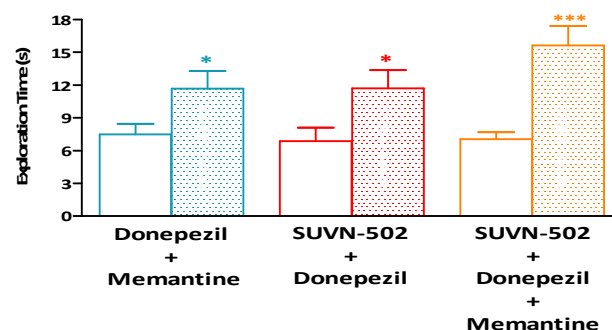
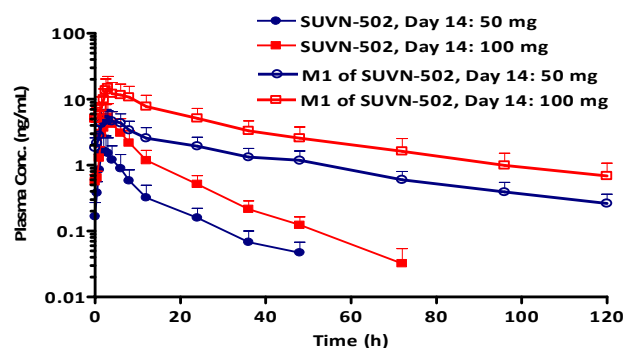
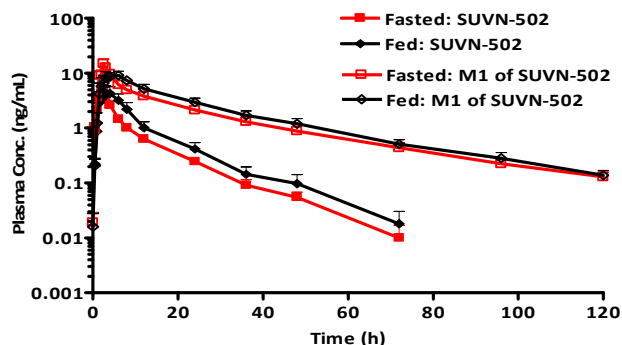
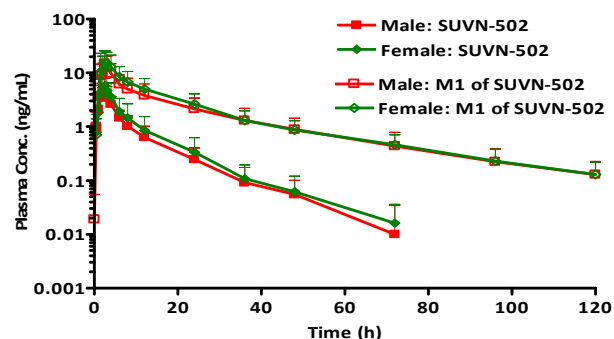
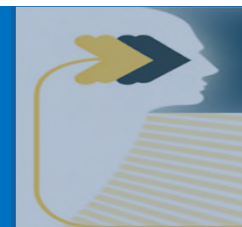
Secondary Outcome Measures

MMSE, CDR-SB, ADCS-ADL, NPI, C-SDD, C-SSRS, Safety and Tolerability

Inclusion Criteria

Moderate Alzheimer's Disease Diagnosed for at least 1 Year and Treatment with Stable Doses of Donepezil and Memantine for 3 Months

First-in-Class Phase-2 in Progress

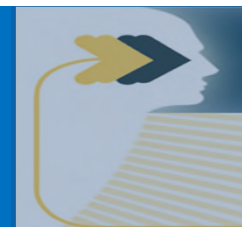


**SUVN-502 +
Donepezil +
Memantine
represents a
Promising new
approach for the
Symptomatic
Treatment of
Alzheimer's Disease**

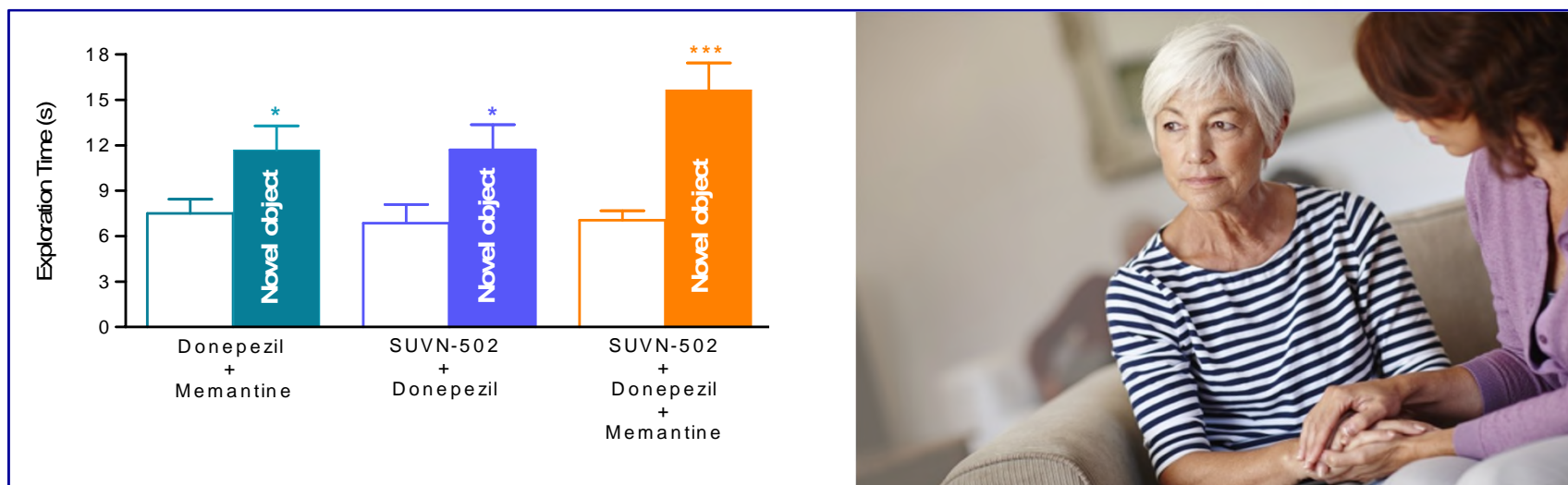


In search of new CNS therapies for better living

Phase 2A POC Study of SUVN-502

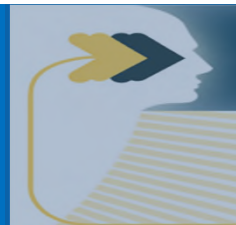


SUVN-502 



Recruiting Sites / Investigators / Patients

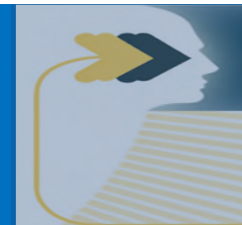
SUVN-502 + Donepezil + Memantine Represents a Promising New Approach for Symptomatic Treatment of Alzheimer's Disease



SUVN-G3031

Current Status: Phase-1 Completed in USA

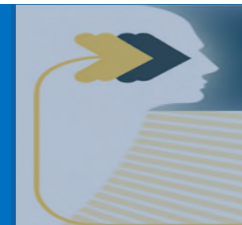
SUVN-G3031: Best in Class H₃ Clinical Candidate



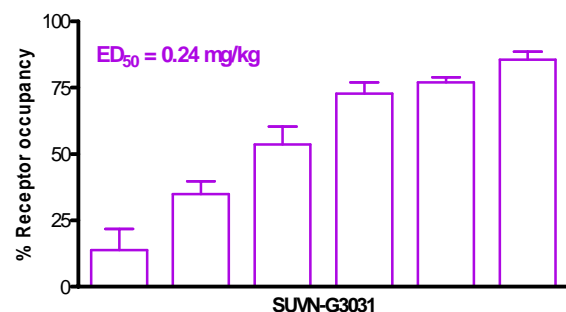
Current Status: Phase-1 Completed in USA

- Potent and selective **histamine H₃ receptor inverse agonist**
- Good brain penetration with adequate unbound concentration
- Robust efficacy in animal models with increase in acetylcholine levels
- Potentiates the efficacy of cholinesterase inhibitor in animal models
- No dose limiting toxicity and No sleep related side effects
- Translatable biomarker available for POC study
- Well tolerated with favorable pharmacokinetics for once a day dosing
- Steady state concentrations achieved within 6 days; no sleep related side effects

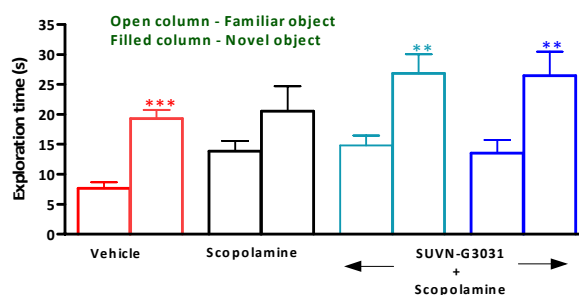
SUVN-G3031: Best in Class H₃ Clinical Candidate



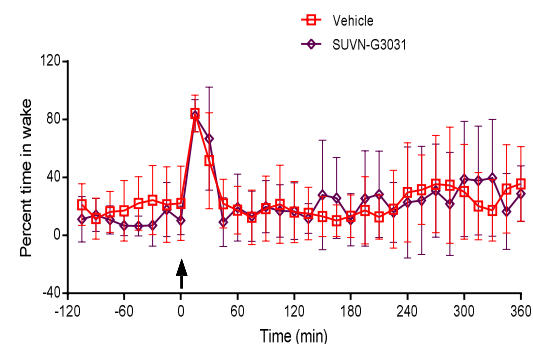
Target Engagement in Rats



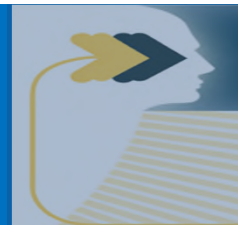
Object Recognition Task in Rats



No sleep related side effects



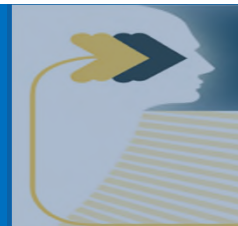
- Well tolerated in humans with dose dependent pharmacokinetics
- Suitable for once a day oral dosing
- Projected human efficacy concentrations achieved at low doses in Phase 1 study
- Phase 2 (POC) protocol under development



SUVN-D4010

Current Status: Phase-1 Completed in USA

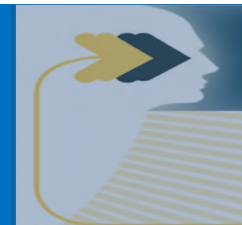
SUVN-D4010: Dual Mechanism of Action



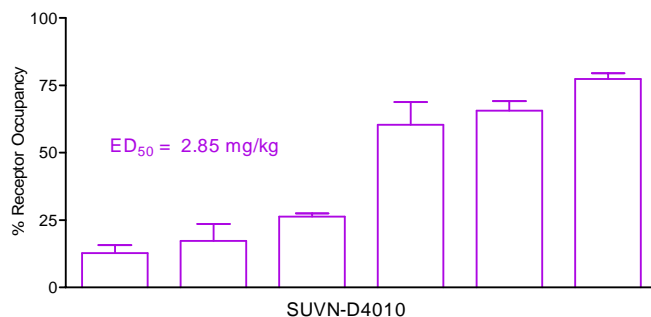
Current Status: Phase-1 Completed in USA

- Selective **Serotonin-4 receptor (5-HT₄)** partial agonist
- Clean hERG, phospholipidosis and AMES
- Orally bioavailable with good brain penetration
- Good correlation between affinity, free fraction, occupancy and efficacy
- Robust efficacy in animal models
- Potentiates the efficacy of cholinesterase inhibitors in animal models
- Disease modifying effects in animal models
- Translatable biomarker available for POC study
- No effect on ECG in the dog telemetry study

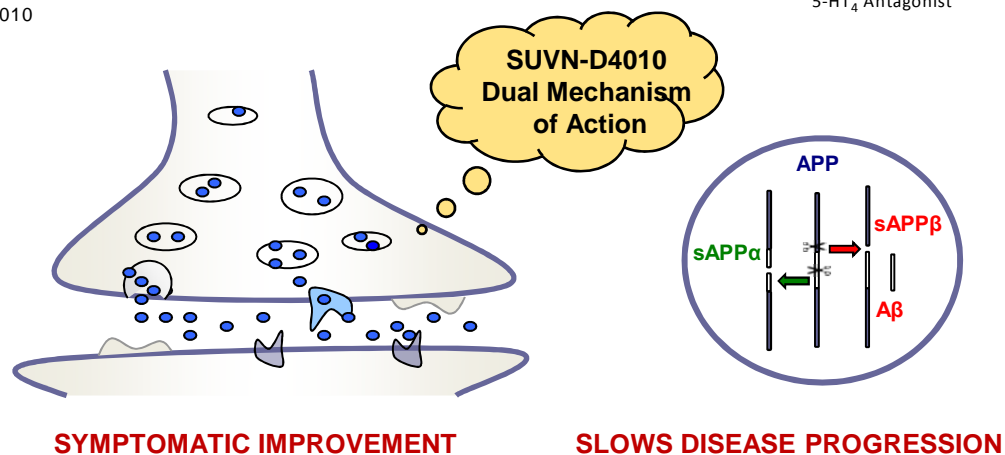
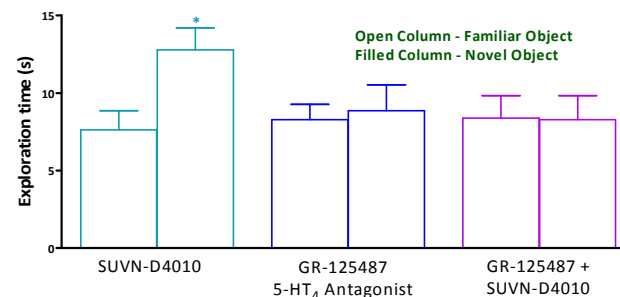
SUVN-D4010: Key Biology Results



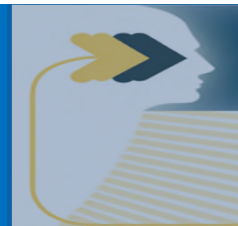
Target Engagement in Rats



Object Recognition Task in Rats



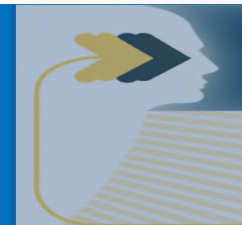
Well tolerated in humans with dose dependent pharmacokinetics in Phase 1 single and multiple ascending dose studies



SUVN-911

Current Status: IND in preparation - USA

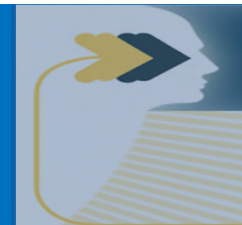
SUVN-911 for Major Depressive Disorders (MDD)



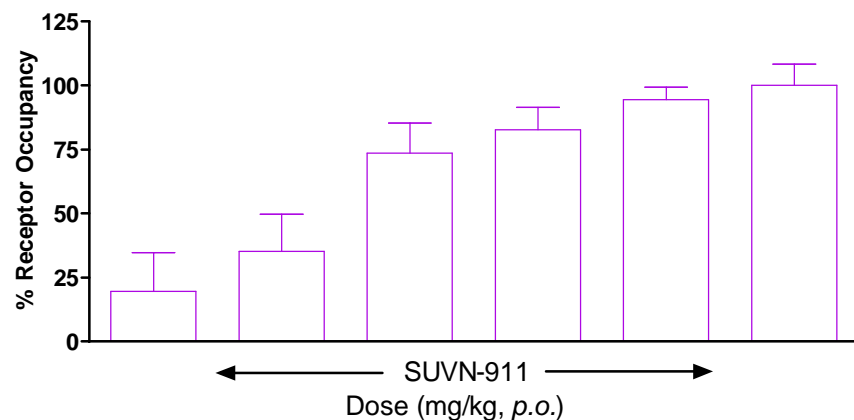
Current Status: IND in preparation - USA

- Novel, potent and selective **$\alpha 4\beta 2$ nAChR antagonist**
- Excellent ADME properties with no drug-drug interaction liability
- Robust efficacy in animal models of depression
- Increase in cortical serotonin levels
- Translatable biomarker available for POC study
- Demonstrated good safety margin in preclinical species
- Well protected intellectual property in all major countries

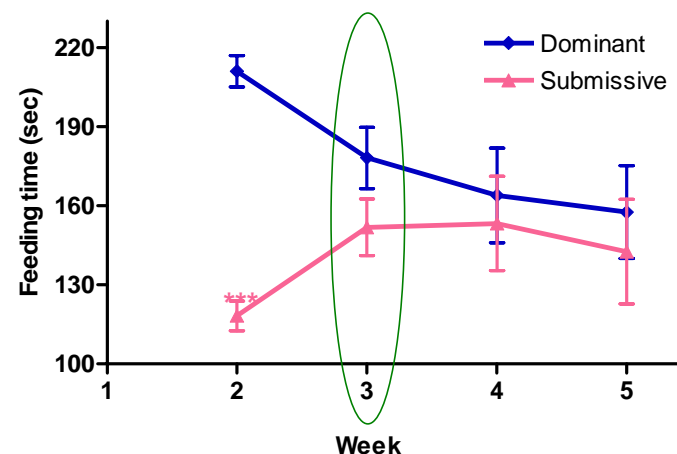
SUVN-911: Key Biology Results



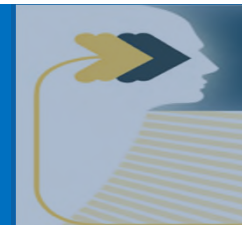
Target Engagement in Rats



Dominant Submissive Assay in Rats



- Addresses major limitations of current MDD therapeutics by offering Rapid onset of action, No sexual dysfunction and is Procognitive
- Phase -1 enabling GLP studies completed and IND filing in progress

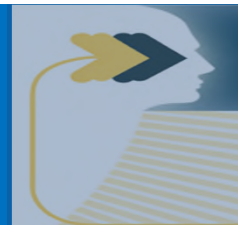


Suven NCE Assets for Partnering

- **SUVN-502** for Cognition in Alzheimer's **Commenced Phase 2A** (POC) clinical trial in USA in September 2015 (537 patients)
- **SUVN-G3031** for Cognition in Alzheimer's **Completed Phase 1** Clinical Trial in USA under US-IND
- **SUVN-D4010** for Cognition in Alzheimer's **Completed Phase 1** Clinical Trial in USA under US-IND
- **SUVN-911** for Major Depressive Disorders (MDD) - **IND in preparation**

Our Financial Approach

Financial Approach



R&D cost expensed out each year

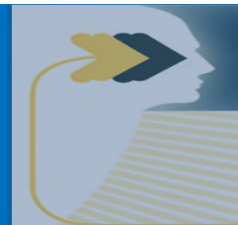
Prudent utilization of cash flows

Low debt

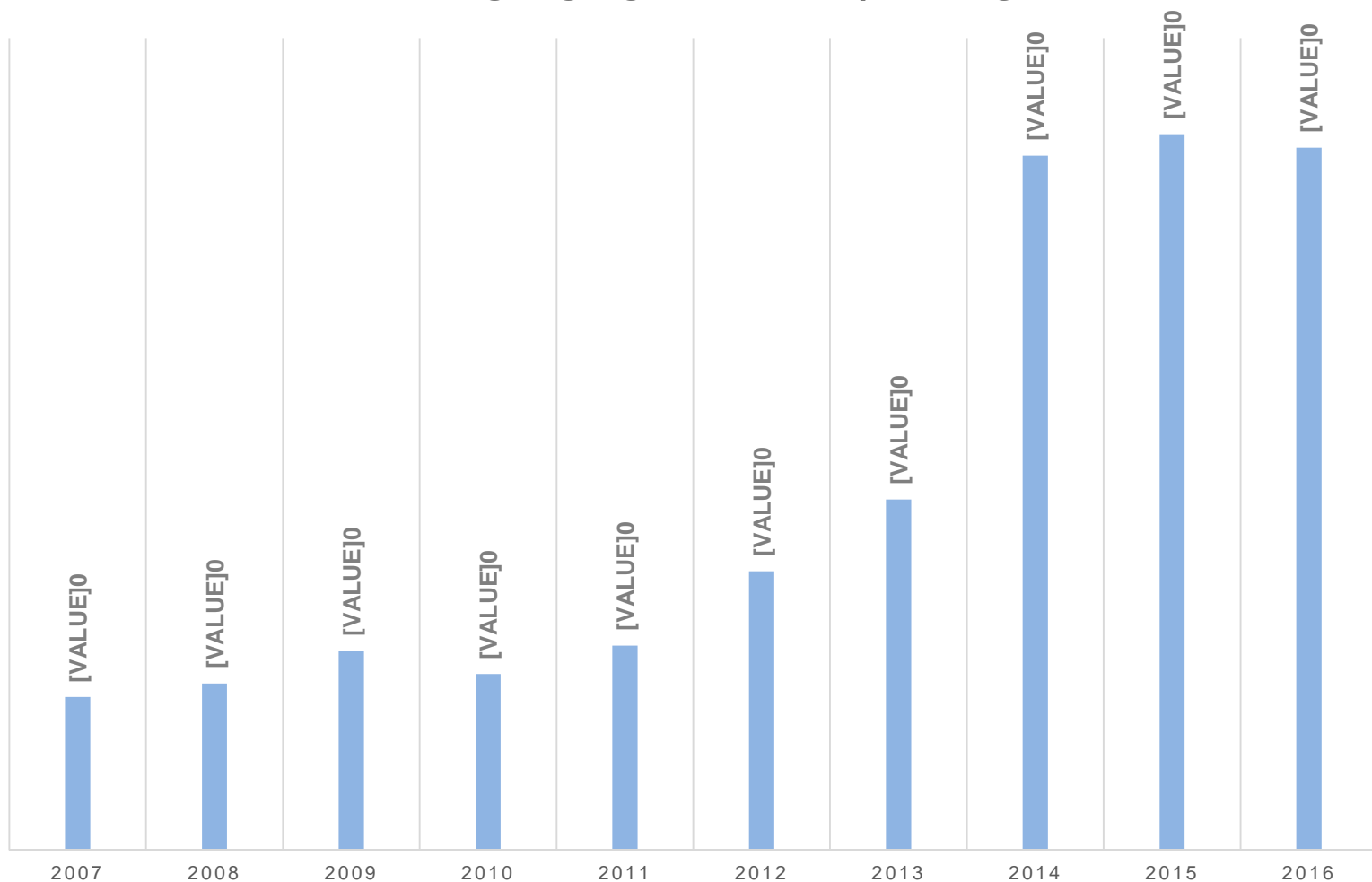
Shareholder value creation focus

Consistently dividend paying

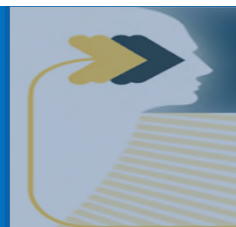
CRAMS Growth



REVENUE GROWTH - INR/MILLION



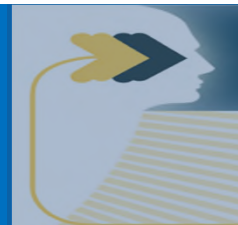
Financial Snapshot



All figures in INR Million except ratios and per share data

Year ending March 31'	2015-16	2014-15	Growth %
Income	5,188.73	5,294.36	-2.00%
Pre-R&D EBITDA	2,055.55	2,250.02	-8.64%
Pre-R&D EBITDA Margin	39.62%	42.50%	
EBITDA	1,426.04	1,680.40	-15.14%
EBITDA Margin	27.48%	31.74%	
EBIT	1,258.83	1,562.64	-19.44%
EBIT Margin	24.26%	29.52%	
Financing costs	54.17	47.09	
Taxes	254.98	428.04	
Net Profit after tax	949.69	1,087.50	-12.67%
NP Margin	18.30%	20.54%	
EPS (basic & diluted not annualised)	7.46	9.04	
Paid up share capital (One Rupee Share)	127.28	127.28	
Depreciation	167.20	117.76	
R&D expenses	629.51	569.63	10.51%

Key Ratios FY16



PAT to Income

18.30%

EBIDTA to Income

27.48%

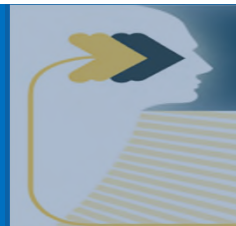
Cash Flow to Income

21.53%

Pre - R&D EBITDA to Income

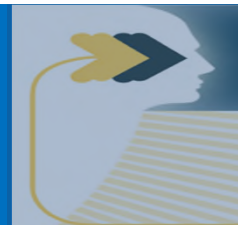
39.62%

Key Takeaways



- Growing CRAMS Revenue
- Self funded drug discovery & development in CNS
- Integrated solutions provider for CNS out of Asia
- Future revenue potential for Suven's CNS pipeline

Contact



Suven, Inc.

1100 Cornwall Road, Suite 110
Monmouth Junction, New Jersey 08852, USA
Tel: +1 732 274 0037

www.suvenincusa.com

Suven Life Sciences Ltd.

Serene Chambers, Road No. 5, Ave 5
Banjara Hills, Hyderabad 500034, India
Tel: +91 40 2354 1142/3314

www.suven.com

Venkat Jasti, Chairman & CEO

jasti@suven.com

+91 939 248 3001

+1 732 822 8479

Sunder Venkatraman, VP Corporate Affairs

vsunder@suven.com

+91 939 248 3011

+1 732 718 9024

