

User manual for Online Trade file Activation and Installation



Contents

- 1. Online Trade file Activation 3
- 2. Online Trade file Installation guild 3
- 3. How to use Online Trade file..... 8

1. Online Trade file Activation

Details to be provided by Members for connecting Online trade file application with BSE Trading System:-

A. Trading member/ Clearing member to provide following details on email :- bsehelp@bseindia.com

1. **Trading member code:** For example 9018
2. **Trading member type:** For example TM/ CM/ PCM / TCM (For Equity Segment value to be provided as TM)
3. **Mode of connection:** Lease line / Internet

In case of Lease line: Lease line IP address of machine connected to BSE Exchange. For Example IP address in range of 10.xxx.xxx.xxx

In case of Internet: Static IP of machine where OTD set-up will be is installed.

4. **Segment:** Equity / Derivatives /Currency Derivatives/ Commodity Derivatives

B. Exchange will map details provided by trading member and provide configuration file (settings.ini) via e-mail. Trading member to copy same in the folder where Online Trade file (OTD.exe) is installed.

2. Online Trade file Installation guide

Installation Steps of Online Trade file application

PREREQUISITES:-

.Net Frame Work 4.0 and above
Lease Line / Internet connectivity on the machine
512MB RAM and above

STEPS:-

Download the Online trade file application available on following link :-

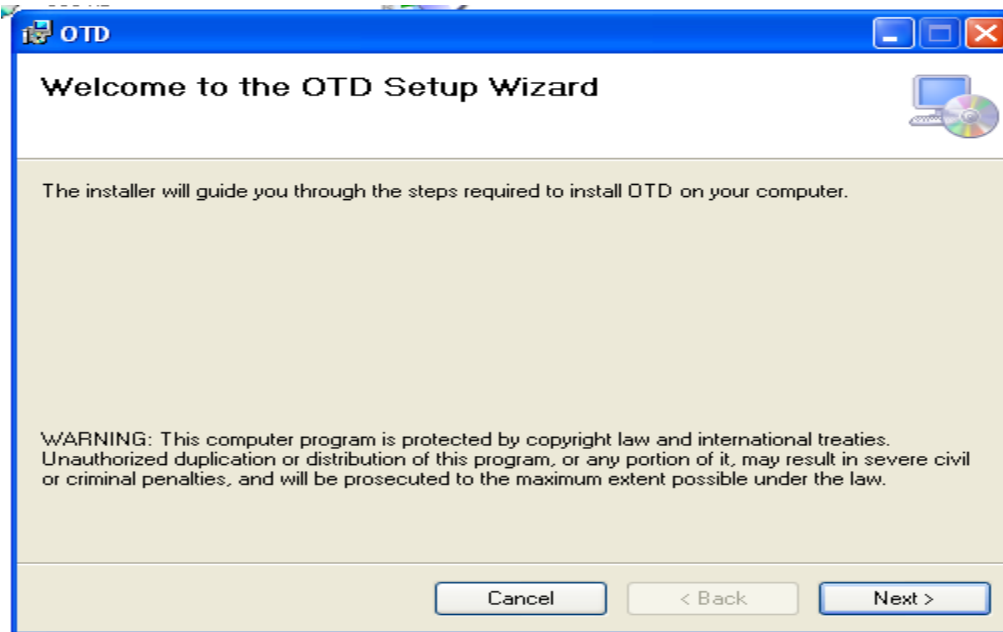
<http://www.bseindia.com/boltpluslivesetup.aspx>

Double click on set up.exe (otd->otd->release->setup)

Click on next button during the installation process

Exe will be installed on default path c:\program files\bse\otd\otd.exe or path provided during installation.

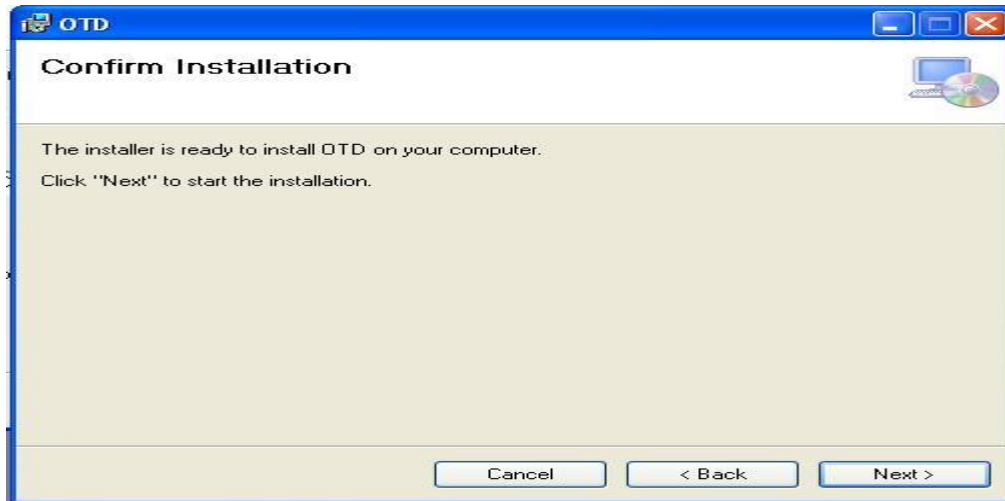
Once setup is completed you will get quick icon 'OTD' on Desktop.



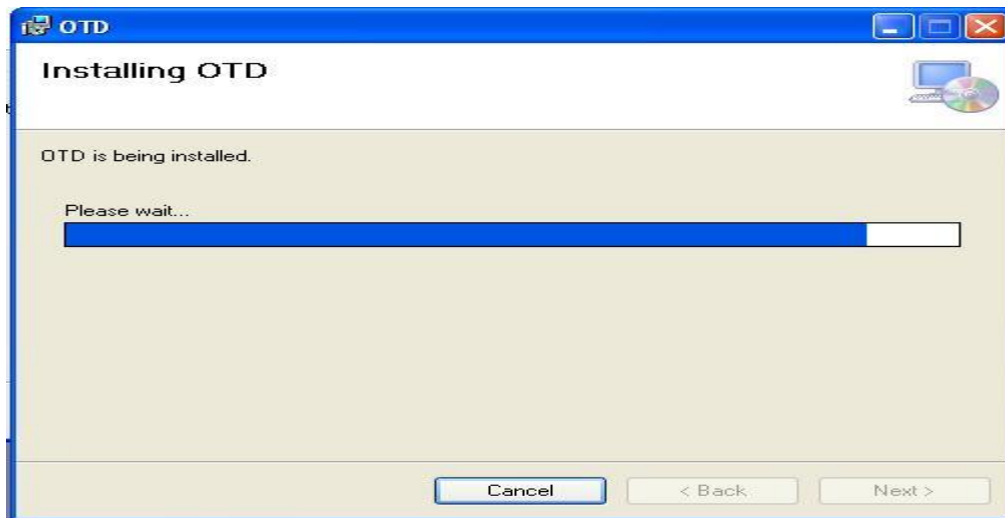
- Click on "next" to install the application on the machine. Is shown below.



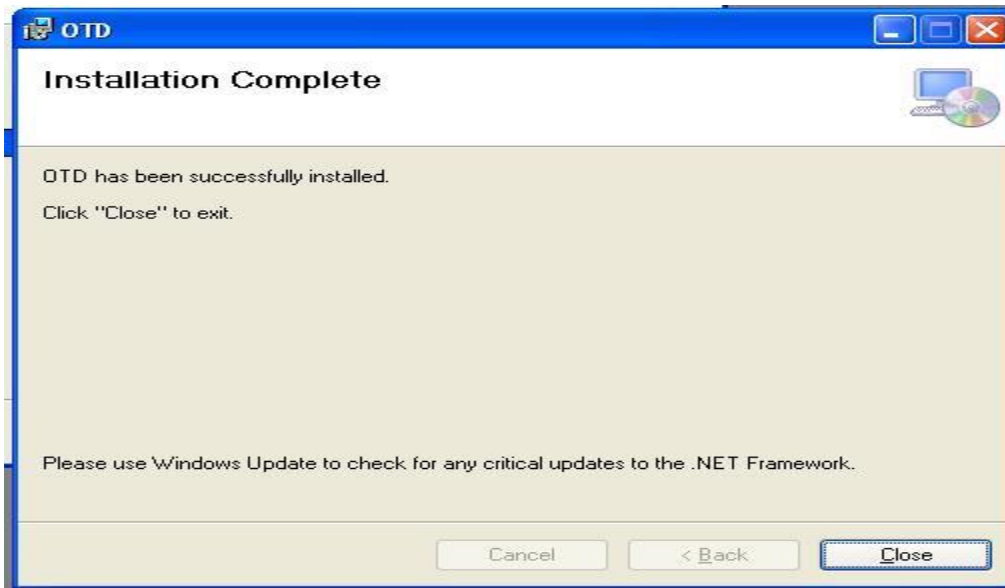
- On clicking on "Next" the following screen is displayed.



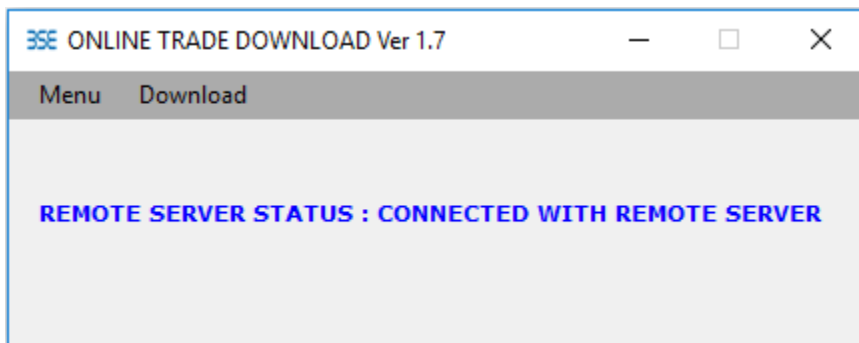
- Click "Next"
- The next screen available to the member states that "OTD" is being installed as shown below



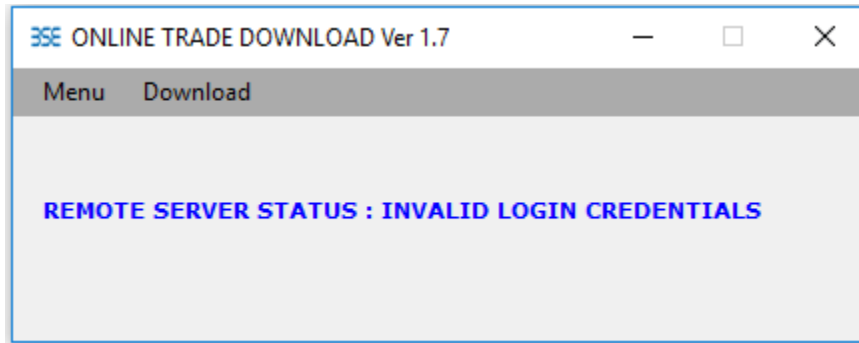
- Once "OTD" has been successfully installed into the system, the following screen appears



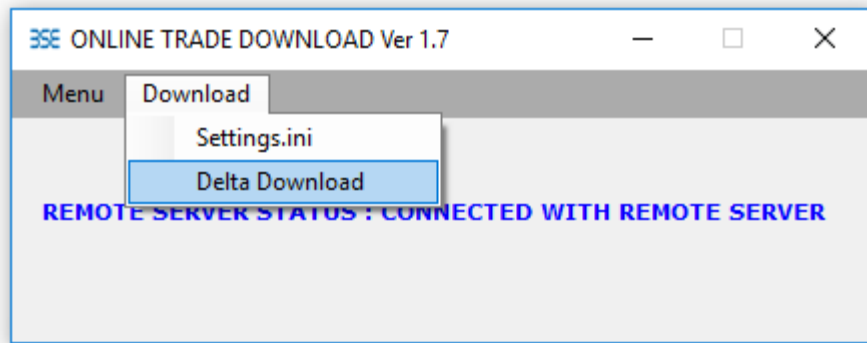
- Click on "close"
- The member can view a quick icon "OTD.exe" on desktop.
- If User Credentials are matched then following screen will be displayed indicating that connectivity has been established.



- In case of incorrect user credentials, following screen will appear.



- In case user want to download all the trades from start of the day till the current time then user can use the below “Delta Download” option.



- When user clicks on “Delta Download” option OTD set-up creates back-up of existing trade file and new trade file is generated in same folder.

3.How to use Online Trade file

- A. Trading member to e-mail requested detail mentioned in point 1(A) to bsehelp@bseindia.com.
- B. Once the necessary mapping is completed members is provided configuration file (settings.ini) from Exchange, which needs to be copied within the OTD folder where 'OTD.exe' is installed.
- C. User to click on 'OTD.exe' installed in his machine which will be connected to Exchange with message '**REMOTE SERVER STATUS: CONNECTED WITH REMOTE SERVER**' and auto Trade file generation will start.
- D. The online trade file shall be generated in CSV format in the same folder where OTD.exe is present.

- Values provided in settings.in file by Exchange

```
REMOTESERVERIP=XX.X.XXX.XXX
REMOTESERVERPORT=XXXX
MEMBERID=XXX (Member code)
BBSID=BAG89
LOGINID= XXX (Member code)
PASSWORD=BSE@98
ALLOWDOWNLOAD=Y
TIMESTAMP=08:00:00
RECONNECT=10000
INTERVALFORSENDATA=30
MEMBERTYPE= (CM / TM)
1=EQ
2=EQD
3=BFX
4=SLB
5=DB
7=BCX
8=EGR
0=OTHERS
Proxy=N
EncryptPassword=N
```

DO's and DON'Ts

- A. Users should not keep online trade file open else auto updation of Trade file will not happen.
- B. To view trades, user should copy trade file from OTD Folder and save the trade file in different location. It is recommended to take the copy of file rather than reading file directly from the location where we are writing data in file.
- C. Do not close OTD.exe once the online trade file is downloaded. If OTD.exe is closed, auto updation of trades in online trade file will not happen.

