



Installation Guide for BOLTPLUS IML

Dated: January 27, 2014

TABLE OF CONTENTS

- 1. **INTRODUCTION**..... 3
- 2. **PRE-REQUISITE**..... 3
 - 2.1 **System Requirements**..... 3
 - 2.2 **CO Files**..... 4
 - 2.3 **Currency OMB** 5
- 3. **INSTALL PROCEDURE OF BOLTPLUS IML**..... 5
- 4. **BOLTPLUS IML CONFIGURATION**..... 10
- 5. **DAILY OPERATIONS** 12
 - 5.1 **BOLTPLUS IML Application**..... 12
 - 5.2 **CO File**..... 12
- 6. **NEW FEATURES IN BOLTPLUS IML**..... 13
 - 6.1 **Dash Board & Event Info** 13
 - 6.2 **Modes in IML:** 13
 - 6.3 **Broadcast:** 14

Installation Guide for use of BOLTPLUS IML

1. INTRODUCTION

IML facilitates Trading members to trade on BSE platform using their customized Trading application. IML acts as a gateway between the Third party software and Exchange's trading engine. Now BSE is introducing a NEW IML called as BOLTPLUS IML, for connecting to the new trading system – BOLTPLUS.

The BOLTPLUS IML provides the flexibility to the user to connect either the equity derivatives or the Currency Derivatives segment seamlessly. The existing BOLT IML setup will be used to connect to the Equity market segment only. To achieve this user needs to run different IML instances for different markets. The IML folder needs to be different for each instance of market.

These IML instances can run on a single system. The only changes required to be done at the IML.INI file. In this file the Host, Broadcast & PORTL related field's needs to be defined as per the segment.

Note: The PORTL field in the IML.INI file needs to be unique for each IML instance running on the same system.

2. PRE-REQUISITE

2.1 System Requirements

Item	Minimum Requirements
System Configuration	Pentium 4 or higher machine
Memory	2 GB RAM or higher depending on OS
Network Cards	2
Free Disk Space	10 GB or more
OS	Windows XP SP2 Windows Server 2003 Windows 7

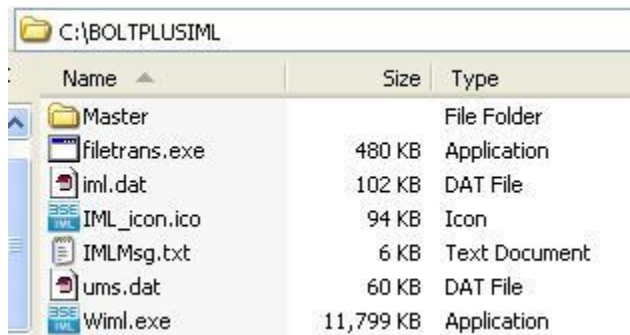
Installation Guide for BOLTPlus IML

Windows Server 2008

2.2 CO Files

i) CO Files for Currency Derivatives

Download the Master folder available from the BSE website link and put it in the folder where Currency BOLTPLUS-IML is installed as shown below.

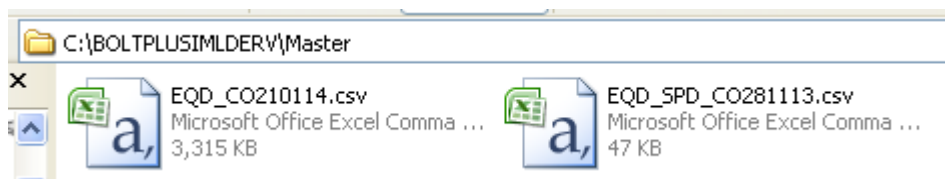


The Master folder contains the CO files for Currency and Currency Spread instruments. These files are compulsory as shown below.



ii) CO Files for Equity Derivatives

Download the Master folder available from the BSE website link and put it in the folder where Derivative BOLTPLUS-IML is installed. The Master folder contains the CO files for Derivative and Derivative Spread instruments. These files are compulsory as shown below.



The CO files needs to be updated daily in the Master folder. Only 2 CO files required in the Master folder. So the user needs to delete the existing CO files and paste the new CO files in the Master folder. If multiple CO files will be available in the Master folder then IML will pick the latest CO File. After updation, the user needs to restart the IML application.

2.3 Currency and Equity Derivatives OMB

The updated Currency Derivatives & Equity Derivatives OMB is available at <http://www.bseindia.com/boltpluslivesetup.aspx> (For Production)

<http://www.bseindia.com/nta.aspx>

3. INSTALL PROCEDURE OF BOLTPLUS IML

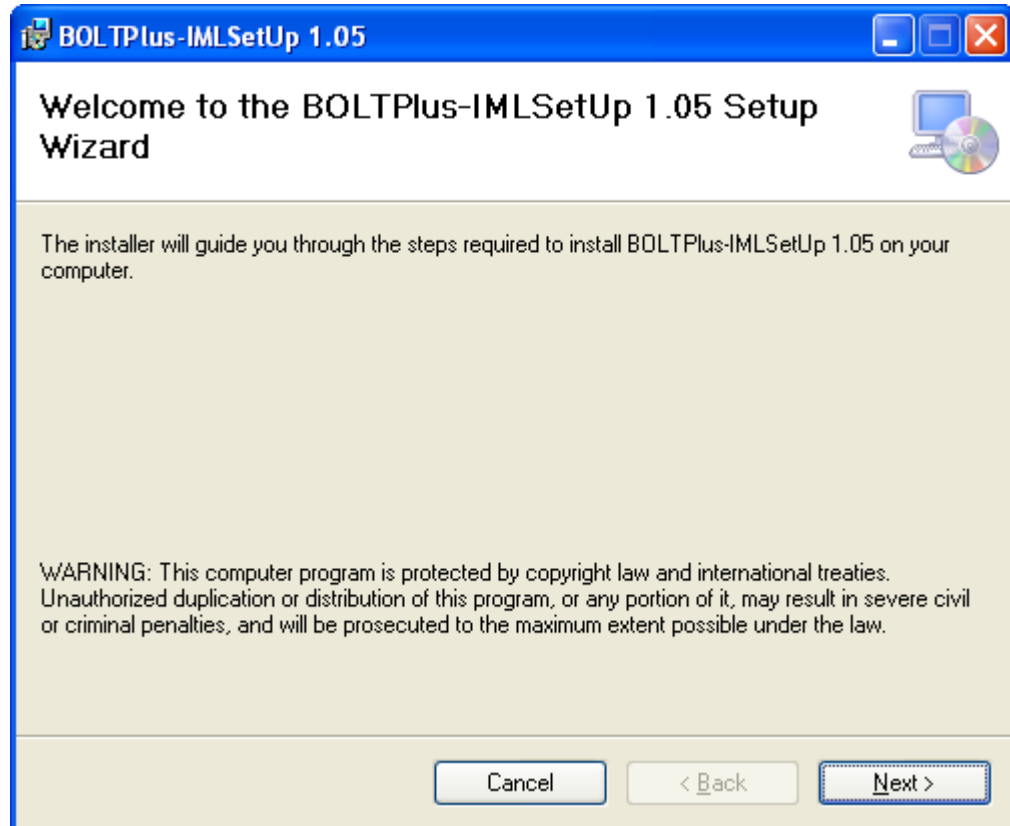
Step for installing the BOLTPLUS IML Version (**Note: The actual version number and the version number displayed in the below screen shots may vary**)

1. Uninstall the current BOLTPLUS IML if exists.
2. Download the BOLTPLUS IML <Version No.> from our BSE Website i.e. **BOLTPLUS-IMLSetUp.msi**.
3. After downloading double click on the BOLTPLUS-IML Installer Application i.e. **BOLTPLUS-IMLSetUp.msi**.

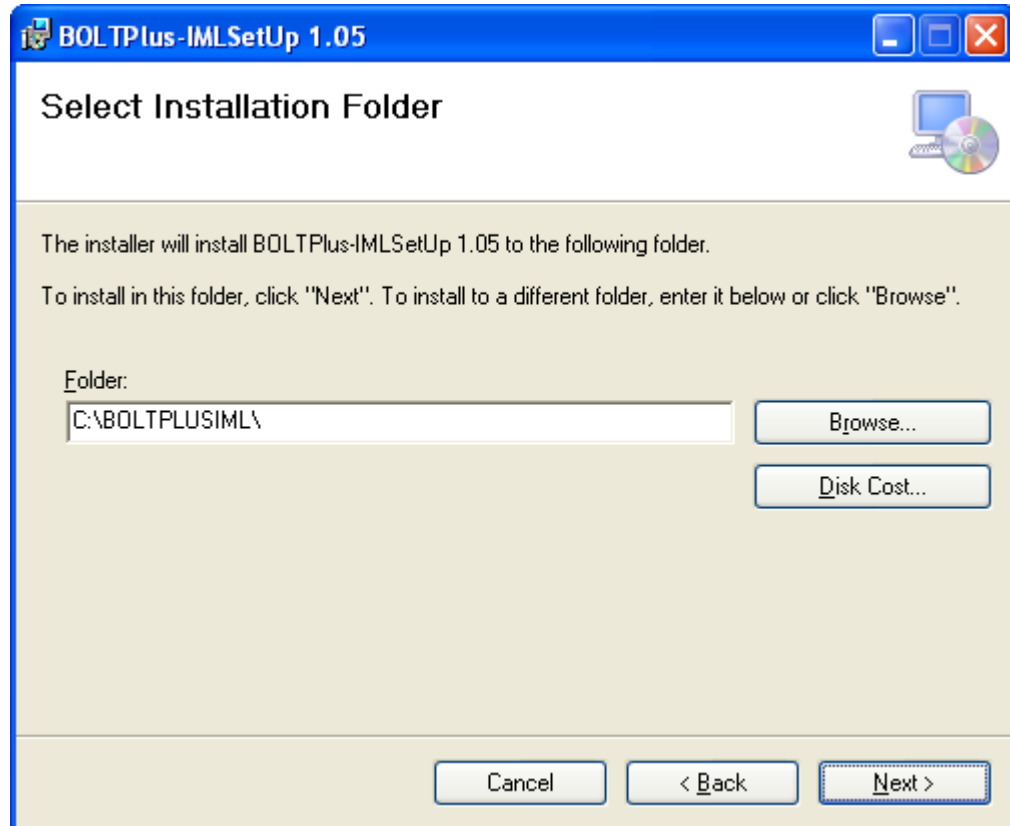


BOLTPlus-IMLSetUp.msi

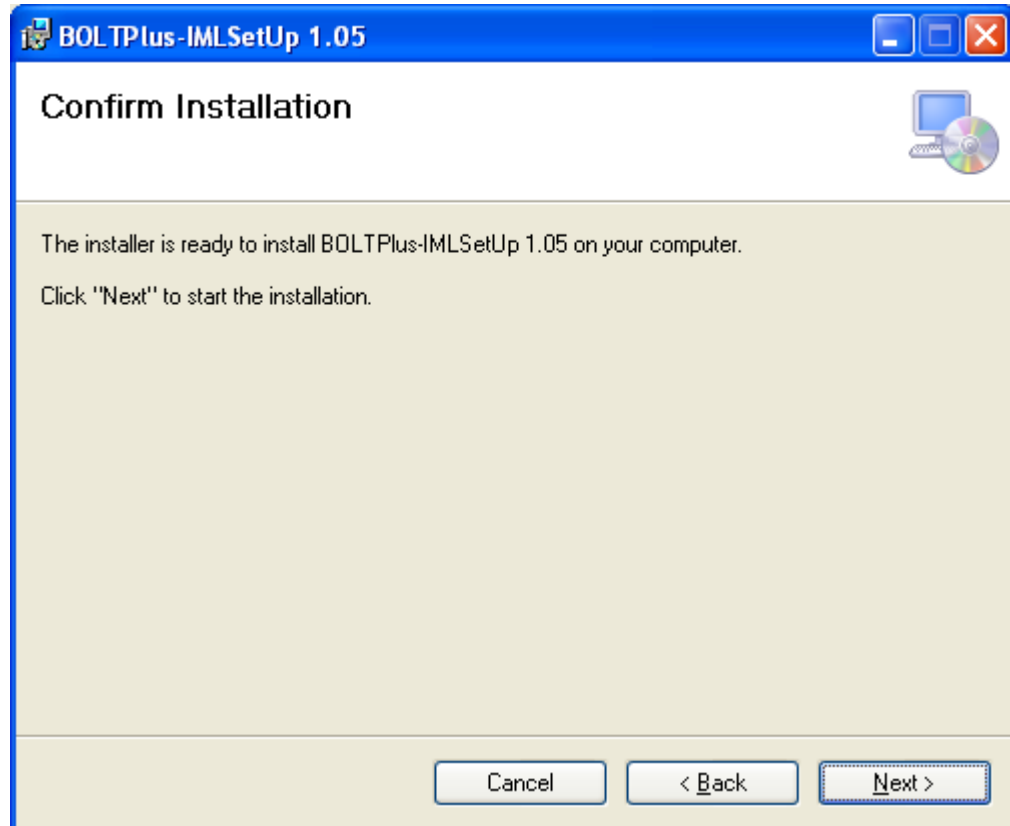
4. When you run the BOLTPLUS-IMLSetUp.msi you will get following Welcome screen as given below (Click on Next to Continue)



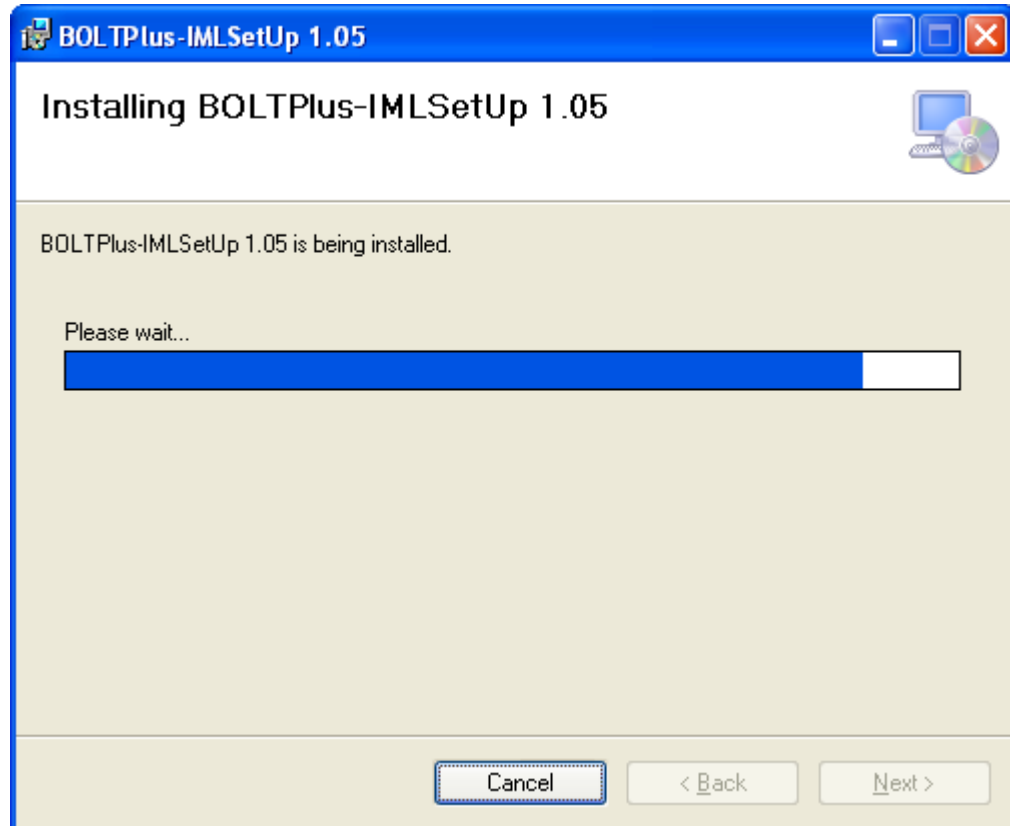
5. After clicking on the Next button, it will ask you for the folder location to install the IML Version <Version No.> the default location is "C:\BOLTPLUSIML\". You can change the location, if required. After providing your folder setting click Next button.



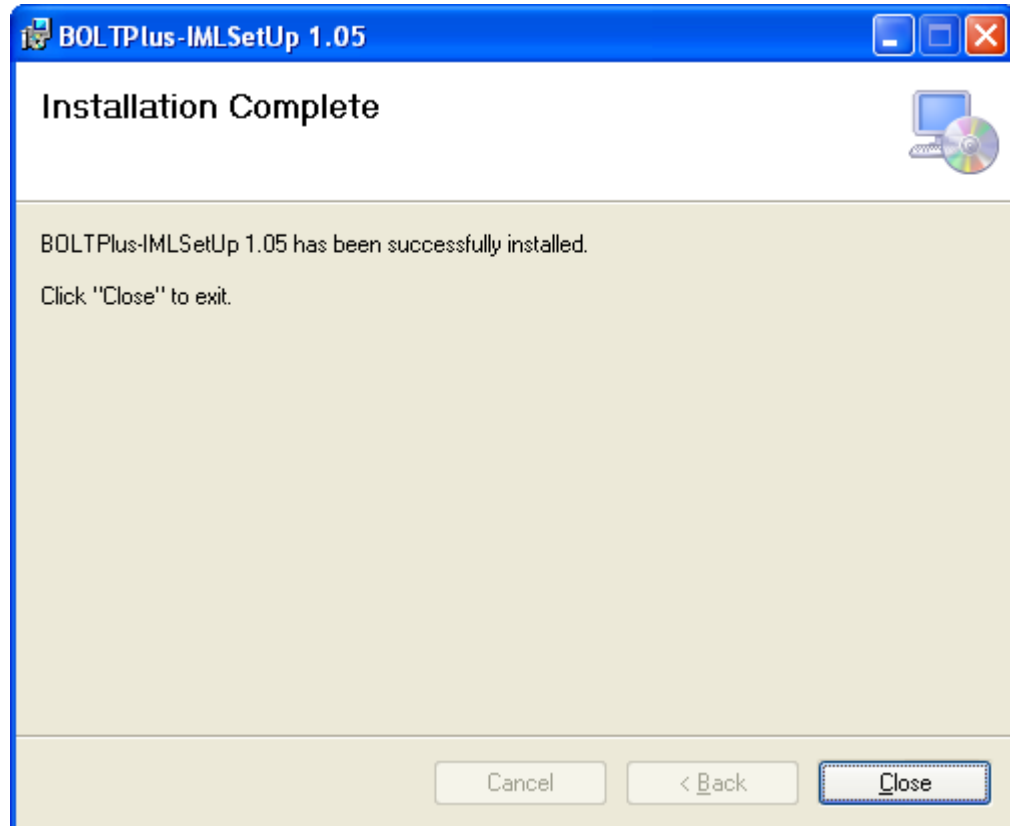
6. The Next window is to confirm Installation window. Click Next Button to continue to install the IML Version <Version No.>.



7. IML Version <Version No.> Installing progress Window



8. Installation Complete Window. Click Close Button.



After Installing BOLTPLUS IML Version successfully, a shortcut icon will be created on Desktop as shown below.



4. BOLTPLUS IML CONFIGURATION

The user needs to put the iml.ini in the BOLTPLUS-IML folder. If the iml.ini is available for the existing BOLT setup then just copy the file and paste in the BOLTPLUS-IML folder. Then add the below mentioned fields in the iml.ini file as shown below

- i) **IML Parameter for Currency Derivatives**

Production Environment for Currency Derivatives

PORTL=[To be entered by user]

NTAHOST=10.255.255.6

NTAPORT=10908

NTAHOSTALT=10.255.255.7

NTAPORTALT=10908

UDPNTAHOST=229.0.0.21

UDPINPORT=10996

UDPNTAADDR= <User Input> [The i.p. where IML will rebroadcast NTA Broadcast]

UDPOUTPORT= <User Input> [The port where IML will rebroadcast NTA Broadcast]

Simulation or Test Environment for Currency Derivatives

PORTL=[To be entered by user]

NTAHOST=10.255.254.6

NTAPORT=10508

NTAHOSTALT=10.255.254.6

NTAPORTALT=10508

UDPNTAHOST=229.0.0.29

UDPINPORT=10596

UDPNTAADDR= <User Input> [The i.p. where IML will rebroadcast NTA Broadcast]

UDPOUTPORT= <User Input> [The port where IML will rebroadcast NTA Broadcast]

ii) IML Parameter for Equity Derivatives

Production Environment for Equity Derivatives

PORTL=[To be entered by user]

NTAHOST=10.255.255.6

NTAPORT=11908

NTAHOSTALT=10.255.255.6

NTAPORTALT=11908

UDPNTAHOST=228.0.0.21

UDPINPORT=11996

Installation Guide for BOLTPlus IML

UDPNTAADDR= <User Input> [The i.p. where IML will rebroadcast NTA Broadcast]

UDPOUTPORT= <User Input> [The port where IML will rebroadcast NTA Broadcast]

Simulation or Test Environment for Equity Derivatives

PORTL=[To be entered by user]

NTAHOST=10.255.254.6

NTAPORT=11508

NTAHOSTALT=10.255.254.6

NTAPORTALT=11508

UDPNTAHOST=226.1.2.49

UDPINPORT=11596

UDPNTAADDR= <User Input> [The i.p. where IML will rebroadcast NTA Broadcast]

UDPOUTPORT= <User Input> [The port where IML will rebroadcast NTA Broadcast]

Note: Please ensure proper MEMBERID field entered in the iml.ini field.

OR

If the user does not have iml.ini at all then he needs to download the new iml.ini file from the BSE website link and save it in the BOLTPLUS-IML folder and change few parameters as per requirement. If the user wanted to connect to BOLT also then he needs to ask for the TermID field value to BSE.

5. DAILY OPERATIONS

5.1 BOLTPLUS IML Application

BOLTPLUS IML application must be closed daily at end of day. This is required to read the fresh CO files on IML start up.

5.2 CO File

The CO files needs to be updated daily in the Master folder. Only 2 CO files required in the Master folder. So the user needs to delete the existing CO files and paste the new CO files in the Master folder. If multiple CO files are available then IML will pick the latest CO File.

6. NEW FEATURES IN BOLTPLUS IML

6.1 Dash Board & Event Info

The dashboard will have BOLTPLUS broadcast count as shown below & the “Event Information” will display BOLTPLUS related information.

The screenshot displays the IML software interface. The title bar reads "IML Version[Beta] 2.05 [Optimized mode] Member: 9069 - BOLTPLUS Equity Derivatives". Below the title bar, there are status indicators: "Settings", "HOST Time : 17:05", "Mode : Interactive", and "BroadCast Count : 1".

TraderId	LogdOn	OrdReq	OrdRep	QryReq	QryRep	TotReq	TotRep	UMS	OrdQueue	QryQueue	TPS Error...	N/W Error
1	Yes	1	1	10	10	16	16	15	0	0	0	0

Below the data table is the "Event Information:" section, dated "Date: 27/1/2014". It contains a table of events:

Trader Id	Time	Event Type	Event Description
1	17:05:19:997	Info	Equity Derivatives Logged On
1	17:05:21:861	Info	Sending Session(LF-Standard) Logon Request for: 906900001
1	17:05:21:861	Info	Equity Derivatives Actual Socket Connected
1	17:05:21:861	Info	Connecting to Primary Equity Derivatives 10.255.254.6 on 11506
1	17:05:21:861	Info	Equity Derivatives Default Socket Connected
1	17:05:21:861	Info	Connecting to Equity Derivatives 10.255.254.6 on 11508
-1	17:05:21:846	Info	Spread Contracts File read: Master//EQD_SPD_CO281113.csv
-1	17:05:21:846	Info	Contracts File read: Master//EQD_CO210114.csv

A "Save As" button is located at the bottom right of the interface.

6.2 Configuration Setting in IML:

The user can set the IML configuration parameters through IML as shown below

Configuration Setting

Mode: BOLTPlus BOLT BOTH

BOLT Host Side (Interactive and Broadcast)

Member Id	9069	Trader Id	202
BOLT Host IP	10.1.101.93	Port 1	2349
BOLT Alt Host IP	0	Port 2	0
BOLT Host MultiCast IP	229.0.0.30	BOLT UDP Host Port	10597

BOLTPlus Host Side (Interactive and Broadcast)

BOLTPlus Host IP	10.255.254.6	BOLTPlus Port No	11508
BOLTPlus Alt Host IP	192.168.244.242	BOLTPlus Alt Port No	11608
BOLTPlus Host MulticastIP	229.0.0.22	BOLTPlus UDP Host Port	10997

TPS Side / Current Settings

TPS Port No.	5007	Interface IP	10.228.61.13
BOLT UDP Address	10.228.61.13	BOLT UDP Port	5478
BOLTPlus UDP Address	10.228.61.13	BOLTPlus UDP Port	5479

Change Save Cancel Close

6.3 Broadcast:

The broadcast is dependent on the UDPNTAHOST & UDPINPORT of the IML.ini file. Once connected to BOLTPLUS broadcasts will be received for the configured IP & Port. If the user selects broadcast only mode then also broadcasts will be received from the IP & Port configured in the IML.ini.

Please write to the following email IDs for any queries –

- iml.info@bseindia.com
- nawaid.pathan@bseindia.com

