

BSE
EXPERIENCE THE NEW

BOLT *Plus*





BOLTPlus - Installation Guide

19/11/2013

This is Installation guide for BSE BoltPlus TM which is a New Trader Workstation Solution from Marketplace Technologies for BSE Currency



TABLE OF CONTENTS

Introduction.....	4
Check List for Preparing the System	5
Network Pre-Requisites for Install.....	6
Network Pre-Requisites – BSE Network	6
Installing BOLT Plus – Initial Check	10
How to Download BOLTPlus and its prerequisites	11
BSE BOLT Plus Installation	12
F.A.Q Frequently Asked Questions	14
Contact Us	17



INTRODUCTION

Welcome! This guide describes how to get started using BoltPlus™ for BSE Currency Segment and steps for the installation and troubleshooting.

BoltPlus™ for BSE CURRENCY segment is a comprehensive software application suite for real time trading of Currency Derivatives on BSE Ltd. BoltPlus™ for BSE CURRENCY segment incorporates not only the markets best practices but also is extremely customizable as per individual need.

The BoltPlus™ for BSE CURRENCY segment Trading System is available for trading through the BSE Leased lines ,MPLS and as well as VSATs

This user guide will explain and familiarize you with the basic information you need to install BoltPlus™ for BSE CURRENCY segment successfully.



CHECKLIST FOR PREPARING THE SYSTEM

Before Installing BoltPlus™ for BSE CURRENCY segment please go through the following Check List.

SOFTWARE /HARDWARE PRE-REQUISITES FOR INSTALL

The various Pre-requisites for BSE BoltPlus™ are detailed as follows

SOFTWARE /HARDWARE PRE-REQUISITES

HARDWARE	SOFTWARE
Min 1 GB RAM or above Screen Resolution - 1024X 768 Display	Operating Systems Supported - OS - WINXP SP2 or SP3, WIN 7. Software - MS Dotnet Framework 4 **3391-WindowsInstaller-KB893803- v2-x86**,wic_x86_enu**

**These set ups are to be used in case we face error while installing the Dot Net Framework Set Up

NETWORK PRE-REQUISITES FOR INSTALL

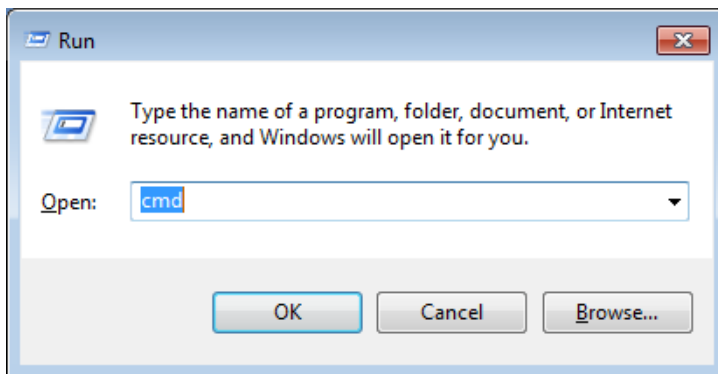
NETWORK PRE-REQUISITES – BSE Network

SERVICES	HOST	PORT
BSE BoltPlus™ Login Server	10.1.101.35	6080
BSE BoltPlus™ Broadcast Server	10.1.101.35	9092
BSE BoltPlus™ FTP Server	10.1.101.35	21

MANUAL NETWORK SERVICE AVAILABILITY CHECK

To manually check the connectivity use telnet

Go to Start -> Run or press windows key + r and enter cmd

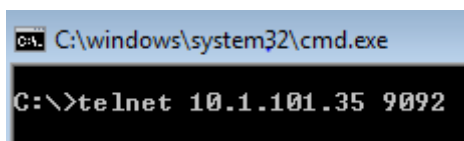


In the command prompt type

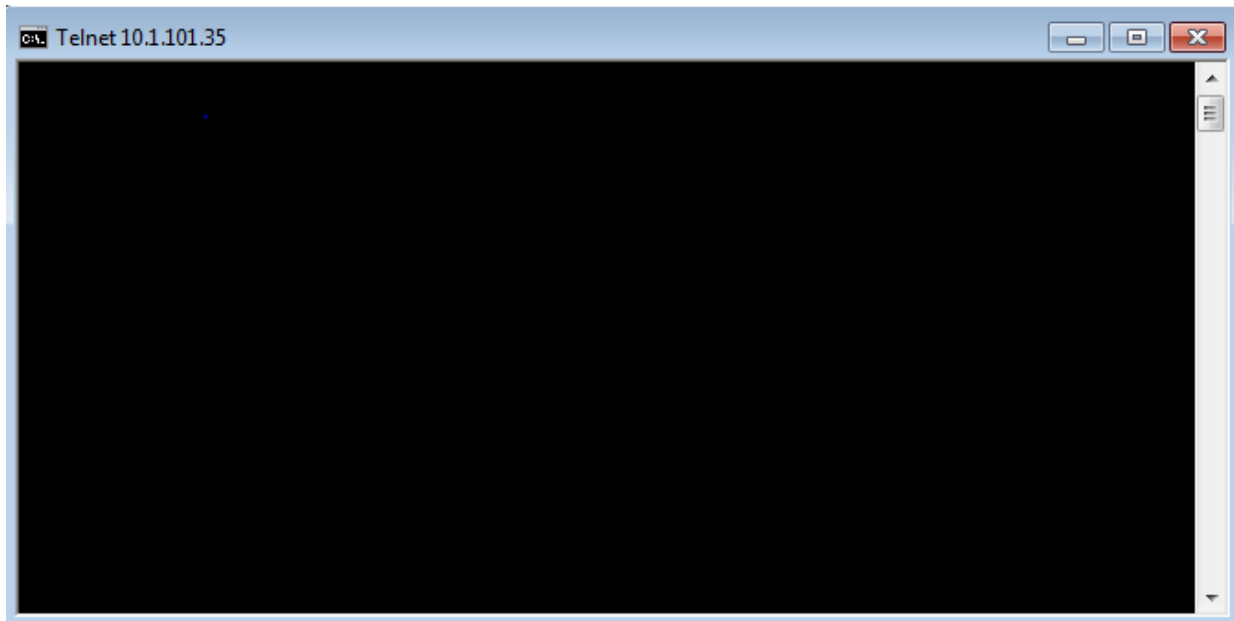
Telnet *(Service host ip) (port)*

Example:

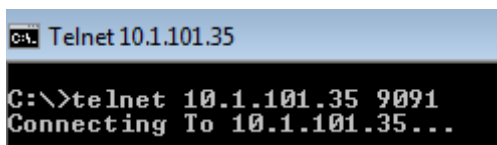
Telnet 10.1.101.35 9092 (To Check Leased Line Broadcast Connectivity)



If available it will give a blank screen with a blinking browser close the window by pressing on the X button



Else it would give an error message saying the connection cannot be established. If you receive such an error kindly request the Network Administrator to open the Ports on the host ips given.



NOTES

On Windows 7 ,In case Telnet client is not installed by default, it will show you an error

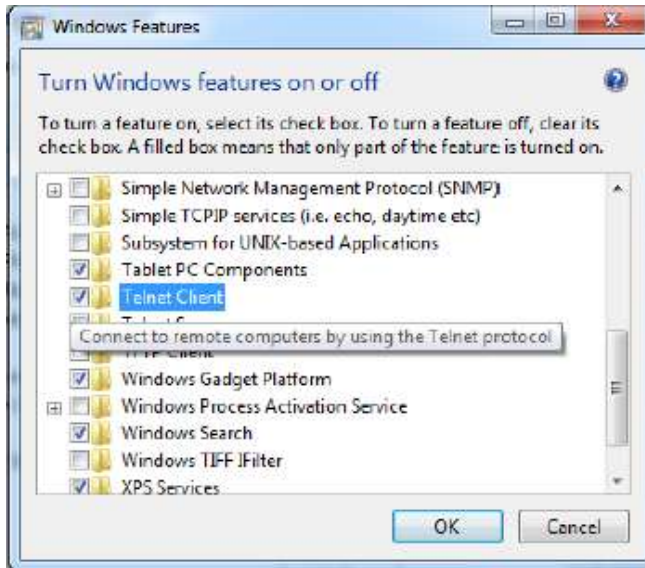
To configure Telnet

go to Control Panel -> Programs and Features.

On the left click on Turn Windows Features On or Off



Select telnet client and click on ok to install the telnet client.



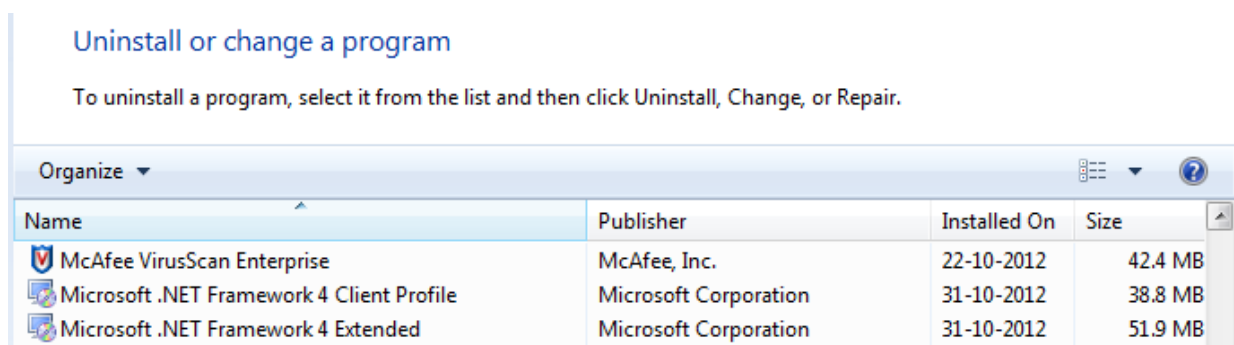
INSTALLING BOLTPlus™– INITIAL CHECK

1.) If BoltPlus™ is already installed then uninstall the earlier version of BSE BoltPlus™ and remove the Folder from your computer.

2.) Check whether .NET framework 4.0 has been installed on your computer

For Windows XP: Control Panel -> Add/ Remove Programs

For Windows VISTA / 7: Control Panel -> Programs and Features



Name	Publisher	Installed On	Size
McAfee VirusScan Enterprise	McAfee, Inc.	22-10-2012	42.4 MB
Microsoft .NET Framework 4 Client Profile	Microsoft Corporation	31-10-2012	38.8 MB
Microsoft .NET Framework 4 Extended	Microsoft Corporation	31-10-2012	51.9 MB

3.) Check whether you have administrative rights to install BSE BoltPlus™ or else for Non Administrative users (Win XP) install in any location other than “Program Files”.

HOW TO DOWNLOAD BSE BoltPlus™ AND ITS PREREQUISITES

To download BSE BoltPlus™ and the corresponding prerequisites got to the BSE website at www.bseindia.com



Go to the downloads Section:

http://www.bseindia.com/downloads/boltplus/BoltPlus_Production.zip

Go to the BoltPlus™ Downloads:

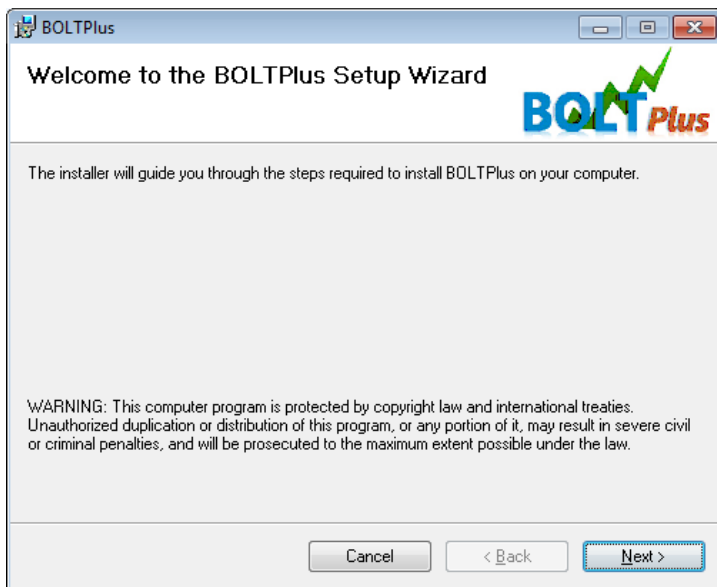
Download the .NET EXE for the exe as a prerequisite.

Select BoltPlus™ & download.

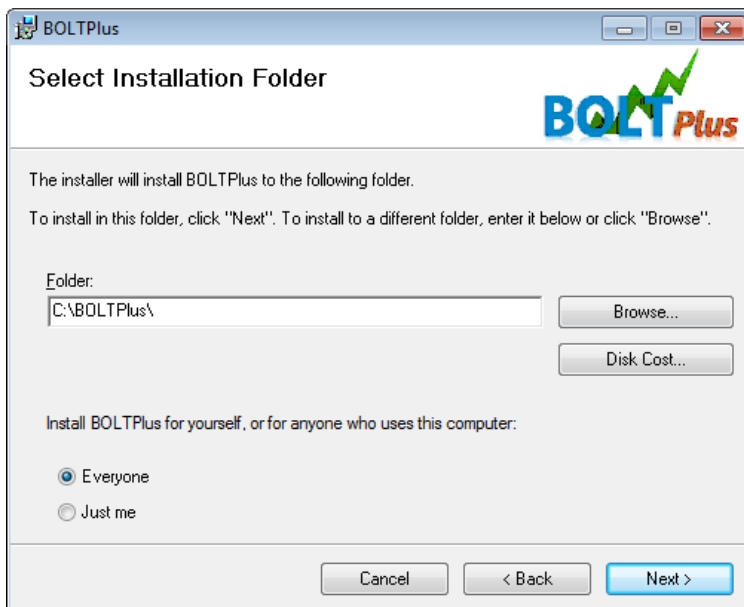
BSE BOLTPlus™ INSTALLATION

Download the zip file and extract the installer from the zip file.

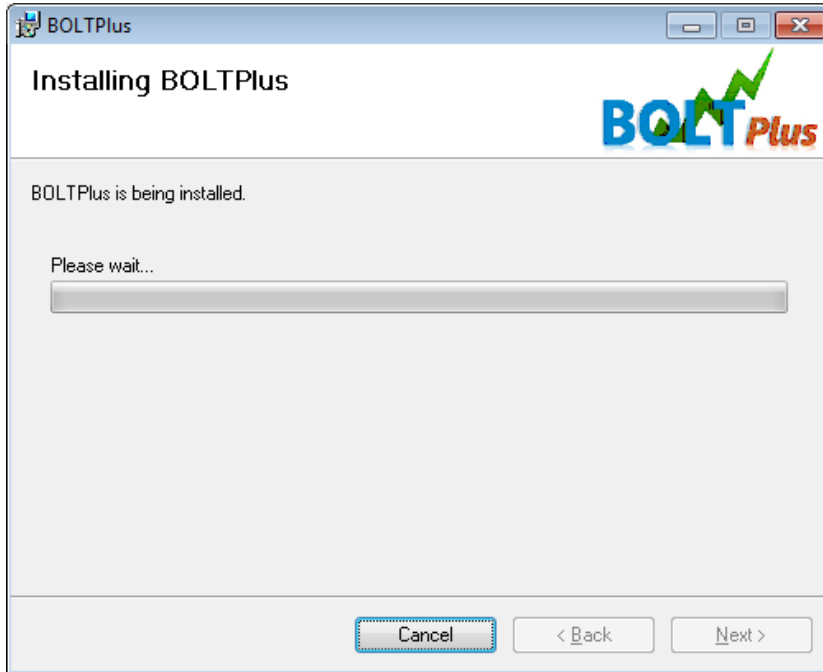
Run the installer



Choose the Program installation directory (Default: C:\BOLTPlus)



Note: If you are facing issues in Windows 7 and vista then install it in another Drive.



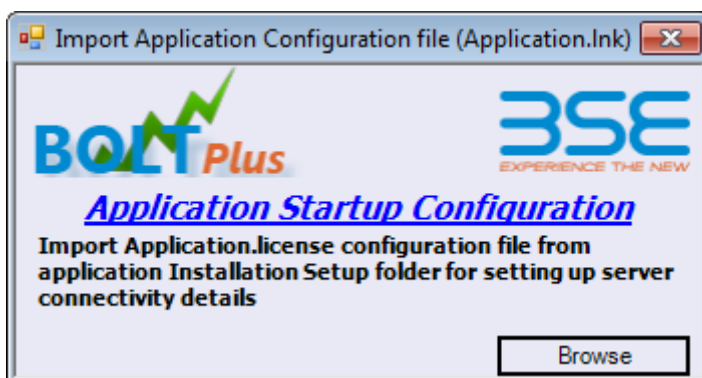
Once In installation is complete BOLTPLUS Icon would be created on the desktop.

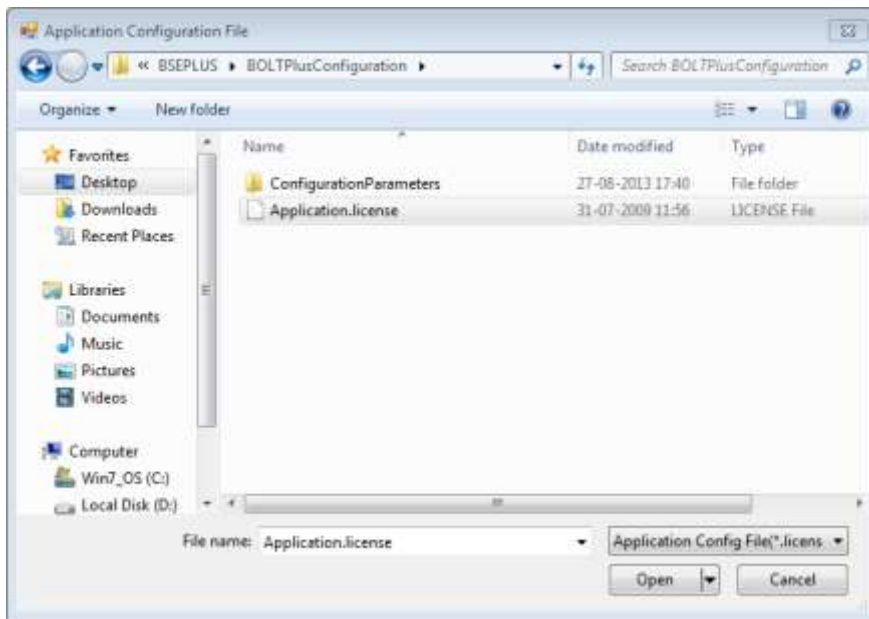
Double click or right-click and start the application.



On Once login the Application would prompt the user to update the required license.

Click on “Browse” and select the Application.license file as shown below.





After the setup is successfully completed the installer ask whether you wish to start BSE BoltPlus TM

F.A.Q FREQUENTLY ASKED QUESTIONS

Some of the frequently asked questions are

Q The application does not start or exits at start giving an error

A. Dot net Framework has not been installed please install it from the link given above

2. On opening of Order/Trade / Net Position the application crashes

A. Dotnet framework 4.0 has not been installed please install it from the link given above

3. I am receiving an error “Underlying connection has been closed”

Connectivity to the BSE BoltPlus™ has been lost. Please check your connectivity

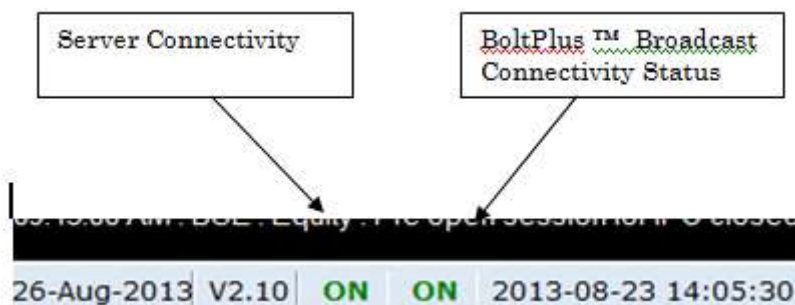
4. I am getting a 407 authentication error

The connectivity that you use requires authentication kindly enter your proxy and authentication details in the Connection settings window

5. I am unable to receive broadcast

BoltPlus™ requires that the Ports 9092 for Broadcast and 21 for FTP be opened for the server ip given in the connection settings as shown below.

In case of no broadcast Please check on Status Bar



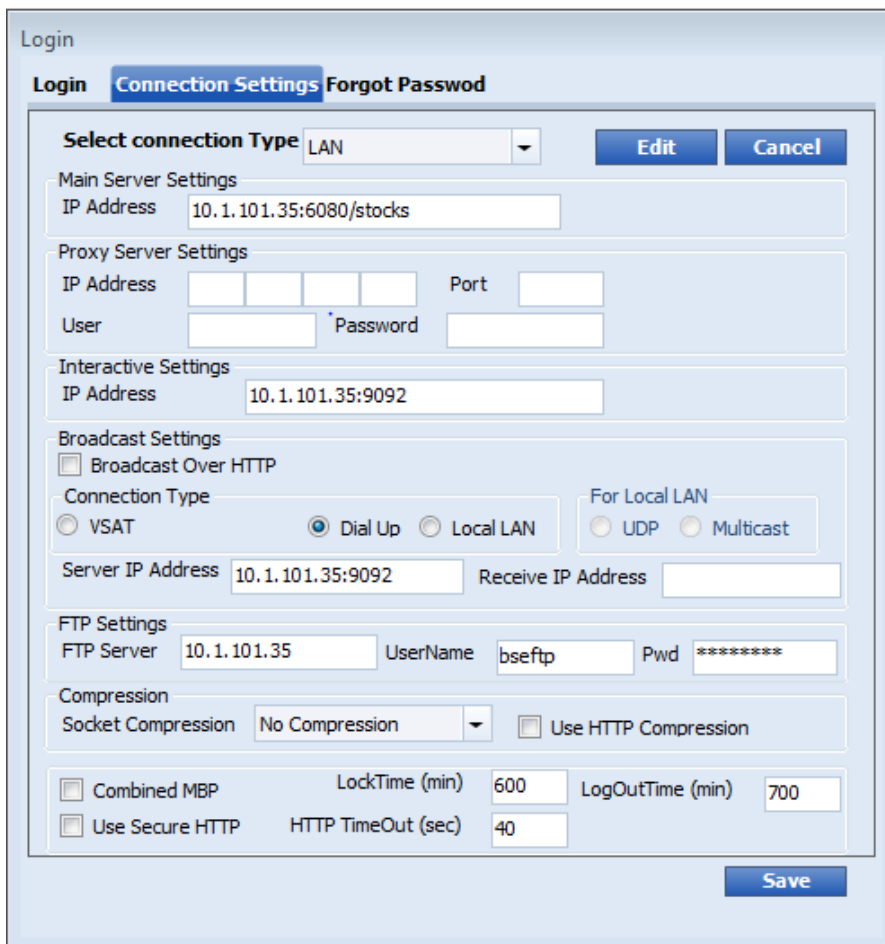
If the Server Connectivity and broadcast Connectivity is showing Off with Red Status then the connectivity with the broadcast server is broken please check connectivity.

26-Aug-2013 | V2.10 | OFF | OFF | 2013-08-23 14:05:30

If you are able to open the various reports but are unable to get broadcast please check whether you are able to connect to the Port 9092 of the server given in the connection settings.

To find manually whether your Port is opened

Find your Server IP in the Login Window -> Connection settings -> Server IP Address



6. I am unable to install .NET framework 4.0 / BoltPlus™ is crashing in Windows Vista/ Windows 7

There is an update for .NET that is provided for this issue on the BSE Website / FTP link in the Downloads Section -> BoltPlus™ Downloads section



7. The BSE BoltPlus™ system crashes on Windows Vista/ Windows 7 even after the patch?

Please install in a location other than Program Files and check.



CONTACT US

You can contact the BoltPlus™ Team on - +91 22 2272 8080/8042/8889/8283/8228.

Or write to us on – fow@mktech.in