

TEL : 0091- 217 - 2310824  
: 0091- 217 - 2451500  
FAX : 0091- 217 - 2451521  
E-MAIL : info@balajiamines.com  
WEBSITE : http://www.balajiamines.com

*Balaji*



ISO 9001:2008

www.tuv.com  
ID 9105038797

CIN : L24132MH1988PLC049387

## AMINES LIMITED

REGD. OFF. : 'BALAJI TOWERS'  
No. 9/1A /1, HOTGI ROAD,  
AASARA CHOWK,  
SOLAPUR - 413 224. (INDIA)

To  
The Secretary  
Listing Department  
The BSE Limited  
Phiroze Jeejeebhoy Towers,  
Dalal Street, MUMBAI – 400 001

Date: 02-11-2015

Dear Sir,

**Sub: Rectification of heading of Part-II in the financial results for the quarter ended 30<sup>th</sup> September 2015 submitted - Reg.,**

With reference to above cited subject, please find enclosed herewith the rectified with heading of Part-II in Unaudited Financial Results for the quarter ended 30<sup>th</sup> September 2015 and there is no other change in the figures.

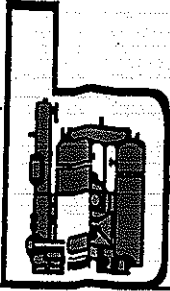
Kindly upload the revised file on the portal.

**FOR BALAJI AMINES LIMITED**

*Arati V. Bandi*

**ARATI V. BANDI**  
Company Secretary





TEL : +91-40-27898206 / 27892071  
 FAX : +91-40-27816171  
 E-MAIL : infohyd@balajiamines.com  
 unit2mktg@balajiamines.com  
 WEBSITE : www.balajiamines.com

# Balaji



CIN : L24132MH1988PLCO49387

## AMINES LTD.

Admn. Off :  
 3rd FLOOR, K.P.R. HOUSE, S.P. ROAD,  
 SECUNDERABAD - 500 003. (INDIA)

**Balaji Amines Limited**  
 (An ISO 9001:2008 Company)  
 CIN : L24132MH1988PLCO49387

Regd. Office : - "Balaji Towers", 9/1A/1, Hotgi Road, Aasara Chowk, Solapur - 413 224

**PART I**

STATEMENT OF UN-AUDITED FINANCIAL RESULTS FOR THE HALF YEAR AND QUARTER ENDED 30<sup>TH</sup> SEPTEMBER 2015  
 (₹ In Lakhs except earnings per shares)

Sl. No.	Particulars	Quarter ended			Half year ended		Year ended
		30.09.2015	30.06.2015	30.09.2014	30.09.2015	30.09.2014	31.03.2015
		Unaudited	Unaudited	Unaudited	Unaudited	Unaudited	Audited
1	Income from operations						
	(a) Net sales/income from operations ( Net of excise duty )	15881.64	15963.64	15044.56	31845.28	31491.58	60486.18
	(b) Other operating income	0.00	0.00	0.00	0.00	0.00	0.00
	Total income from operations (net)	15881.64	15963.64	15044.56	31845.28	31491.58	60486.18
2	Expenses						
	(a) Cost of materials consumed	8747.51	8248.35	8040.95	16995.86	18368.38	34933.65
	(b) Changes in inventories of finished goods & work-in-progress	445.93	1232.54	490.96	1678.47	283.08	137.48
	(c) Employee benefits expense	687.84	654.82	553.91	1342.66	1125.33	2446.49
	(d) Depreciation	439.15	439.15	492.55	878.30	982.85	1859.02
	(e) Other expenses	3205.56	2929.48	3267.69	6135.04	6527.50	12732.70
	Total expenses	13525.99	13504.34	12846.06	27030.33	27287.14	52109.34
3	Profit / (Loss) from operations before other income, finance costs and exceptional items (1-2)	2355.65	2459.30	2198.50	4814.95	4204.44	8376.84
4	Other income	75.52	67.54	85.29	143.06	163.08	338.83
5	Profit / (Loss) from ordinary activities before finance costs and exceptional items (3 + 4)	2431.17	2526.84	2283.79	4958.01	4367.52	8715.67
6	Finance costs	518.54	572.93	794.20	1091.47	1629.93	3141.60

1 of 6 pages

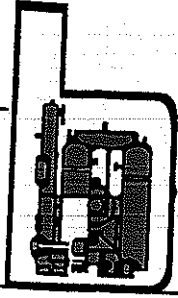


Regd. Office : "Balaji Towers", No. 9/1A/1, Hotgi Road, Aasara Chowk Solapur - 413 003.

Fax : (0217) 2451521, Phones : (0217) 2451523, 2451524, E-mail : info@balajiamines.com

Unit II Works : Beside APSEB Sub Station II, IDA, Bollaram - 502 325, Jinnaram Mandal, Medak Dist. Telangana.

Phones : 08458-329660, Telefax : 08458-279240, E-mail : works2@balajiamines.com



TEL : +91-40-27898206 / 27892071  
FAX : +91-40-27816171  
E-MAIL : infohyd@balajiamines.com  
unit2mktg@balajiamines.com  
WEBSITE : www.balajiamines.com

# Balaji



CIN : L24132MH1988PLCO49387

## AMINES LTD.

Admn. Off :  
3rd FLOOR, K.P.R. HOUSE, S.P. ROAD,  
SECUNDERABAD - 500 003. (INDIA)

7	Profit / (Loss) from ordinary activities after finance costs but before exceptional items (5 - 6)	1912.63	1953.91	1489.59	3866.54	2737.59	5574.07
8	Exceptional items	0.00	0.00	0.00	0.00	0.00	0.00
9	Profit / (Loss) from ordinary activities before tax (7 + 8)	1912.63	1953.91	1489.59	3866.54	2737.59	5574.07
10	Tax expense	731.34	672.29	581.05	1403.63	898.03	1938.25
11	Net Profit / (Loss) from ordinary activities after tax (9 - 10)	1181.29	1281.62	908.54	2462.91	1839.56	3635.82
12	Extraordinary items (net of tax expense)	0.00	0.00	0.00	0.00	0.00	0.00
13	Net Profit / (Loss) for the period (11 + 12)	1181.29	1281.62	908.54	2462.91	1839.56	3635.82
14	Paid-up equity share capital (Face Value of each Share ₹2/-)	648.02	648.02	648.02	648.02	648.02	648.02
15	Reserve excluding Revaluation Reserves as per balance sheet of previous accounting year	23124.54	23124.54	19576.02	23124.54	19576.02	19576.02
16	Earning Per Share (₹)						
	i) Basic and diluted EPS before extraordinary items for the period, for the year to date, and for the previous year (not to be annualised)	3.64	3.96	2.81	7.60	5.68	11.22
	ii) Basic and diluted EPS after extraordinary items for the period, for the year to date, and for the previous year (not to be annualised)	3.64	3.96	2.81	7.60	5.68	11.22



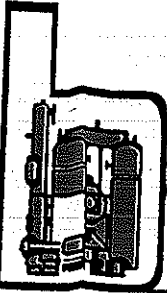
2 of 6 pages

Regd. Office: "Balaji Towers", No. 9/1A/1, Hotgi Road, Aasara Chowk, Solapur - 413 003.

■ Fax : (0217) 2451521, Phones : (0217) 2451523, 2451524, E-mail : info@balajiamines.com

Unit II Works : Beside APSEB Sub Station II, IDA, Bollaram - 502 325, Jinnaram Mandal, Medak Dist. Telangana.

■ Phones : 08458-329660, Telefax : 08458-279240, E-mail : works2@balajiamines.com



TEL : +91-40-27898206 / 27892071  
 FAX : +91-40-27816171  
 E-MAIL : infohyd@balajiamines.com  
 unit2mktg@balajiamines.com  
 WEBSITE : www.balajiamines.com

# Balaji



CIN : L24132MH1988PLCO49387

## AMINES LTD.

Admn. Off :  
 3rd FLOOR, K.P.R. HOUSE, S.P. ROAD,  
 SECUNDERABAD - 500 003. (INDIA)

### PART II SELECTED INFORMATION FOR THE QUARTER ENDED 30<sup>TH</sup> SEPTEMBER 2015

A	PARTICULARS OF SHAREHOLDING	Quarter ended			Half year ended		Year ended
		30.09.2015	30.06.2015	30.09.2014	30.09.2015	30.09.2014	31.03.2015
1	Public shareholding						
	- Number of shares	14775013	14775013	14794918	14775013	14794918	14764664
	- Percentage of shareholding	45.60	45.60	45.66	45.60	45.66	45.56
2	Promoters and Promoter Group Shareholding **	17625987	17625987	17606082	17625987	17606082	17624082
a)	Pledged / Encumbered						
	Number of shares	6432000	6732000	6732000	6432000	6732000	6732000
	Percentage of shares (as a % of the total shareholding of promoter and promoter group)	36.49	38.19	38.24	36.49	38.19	38.20
	Percentage of shares (as a % of the total share capital of the company)	19.85	20.78	20.78	19.85	20.78	20.78
b)	Non - encumbered						
	Number of shares	11193987	10893987	10874082	11193987	10893987	10892082
	Percentage of shares (as a % of the total shareholding of the Promoter and Promoter group)	63.50	61.80	61.76	63.50	61.80	61.80
	Percentage of shares (as a % of the total share capital of the company)	34.55	33.62	33.56	34.55	33.62	33.61
	Particulars	3 months ended 30.09.2015					
B	INVESTOR COMPLAINTS						
	Pending at the beginning of the quarter	Nil					
	Received during the quarter	Nil					
	Disposed of during the quarter	Nil					
	Remaining unresolved at the end of the quarter	Nil					



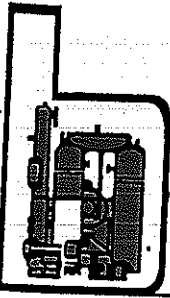
3 of 6 pages

Regd. Office : "Balaji Towers", No. 97A/1, Hotgi Road, Aasara Chowk, Solapur - 413 003.

■ Fax : (0217) 2451521, Phones : (0217) 2451523, 2451524, E-mail : info@balajiamines.com

Unit II Works : Beside APSEB Sub Station II, IDA, Bollaram - 502 325, Jinnaram Mandal, Medak Dist. Telangana.

■ Phones : 08458-329660, Telefax : 08458-279240, E-mail : works2@balajiamines.com



TEL : +91-40-27898206 / 27892071  
 FAX : +91-40-27816171  
 E-MAIL : infohyd@balajiamines.com  
 unit2mktg@balajiamines.com  
 WEBSITE : www.balajiamines.com

# Balaji



CIN : L24132MH1988PLC049367

## AMINES LTD.

Admn. Off :  
 3rd FLOOR, K.P.R. HOUSE, S.P. ROAD,  
 SECUNDERABAD - 500 003. (INDIA)

### Segment Information

( ₹ In Lakhs )

Sl.No.	Particulars	Quarter ended			Half year ended		Year ended
		30.09.2015	30.06.2015	30.09.2014	30.09.2015	30.09.2014	31.03.2015
		Unaudited	Unaudited	Unaudited	Unaudited	Unaudited	Audited
1	Segment Revenue						
	Amines Division	15584.58	15627.75	14801.79	31212.33	31001.51	59356.19
	Hotel Division	302.07	337.89	244.68	639.96	496.38	1148.67
	Sub Total :	15886.65	15965.64	15046.47	31852.29	31497.89	60504.86
	Less: Inter-segment revenue	5.01	2.00	2.31	7.01	6.31	18.68
	Net revenue from operations	15881.64	15963.64	15044.16	31845.28	31491.58	60486.18
2	Segment Results before Tax & Interest						
	Amines Division	2514.25	2607.99	2373.75	5122.24	4565.78	9170.33
	Hotel Division	-83.08	-81.15	-90.36	-164.23	-198.26	-454.66
	Total :	2431.17	2526.84	2283.39	4958.01	4367.52	8715.67
	Less : Interest						
	Amines Division	451.95	503.75	701.09	955.70	1440.60	2781.91
	Hotel Division	66.59	69.18	93.11	135.77	189.33	359.69
	Total :	518.54	572.93	794.20	1091.47	1629.93	3141.60
	Segment Profit/Loss (-) before tax						
	Amines Division	2062.30	2104.24	1672.66	4166.54	3125.18	6388.42
	Hotel Division	-149.67	-150.33	-183.47	-300.00	-387.59	-814.35
	Total :	1912.63	1953.91	1489.19	3866.54	2737.59	5574.07
3	Segment Assets						
	Amines Division	46937.42	48166.55	49342.41	46937.42	49342.41	49972.92
	Hotel Division	9711.92	9888.34	10412.56	9712	10412.56	10039.25
	Total :	56649.34	58054.89	59754.97	56649.34	59754.97	60012.17
4	Segment Liabilities						
	Amines Division	27897.20	30061.64	33836.25	27897.20	33836.25	32964.74
	Hotel Division	3245.95	3349.61	4599.85	3245.95	4599.85	3590.34
	Total :	31143.15	33411.25	38436.10	31143.15	38436.10	36555.08

4 of 6 pages

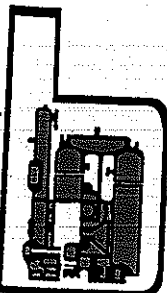


Regd. Office "Balaji Towers", No. 9/1A/1, Hotgi Road, Aasara Chowk, Solapur - 413 003.

Fax : (0217) 2451521, Phones : (0217) 2451523, 2451524, E-mail : info@balajiamines.com

Unit II Works : Beside APSEB Sub Station II, IDA, Bollaram - 502 325, Jinnaram Mandal, Medak Dist. Telangana.

Phones : 08458-329660, Telefax : 08458-279240, E-mail : works2@balajiamines.com



TEL : +91-40-27898206 / 27892071  
 FAX : +91-40-27816171  
 E-MAIL : infohyd@balajiamines.com  
 unit2mktg@balajiamines.com  
 WEBSITE : www.balajiamines.com

# Balaji



CIN : L24132MH1988PLCO49387

## AMINES LTD.

Admn. Off :  
 3rd FLOOR, K.P.R. HOUSE, S.P. ROAD,  
 SECUNDERABAD - 500 003. (INDIA)

1) Notes: Statement of Assets & Liabilities

(₹ in Lakhs)

Particulars	Current Half Year ended 30.09.2015 (Unaudited)	Year ended 31.03.2015 (Audited)
<b>A EQUITY AND LIABILITIES</b>		
<b>1 Shareholders' funds</b>		
(a) Share capital	648.02	648.02
(b) Reserves and surplus	25587.43	23124.54
(c) Money received against share warrants		
<b>Sub-total - Shareholders' funds</b>	<b>26235.45</b>	<b>23772.56</b>
<b>2 Share application money pending allotment</b>		
<b>3 Non-current liabilities</b>		
(a) Long-term borrowings	4773.55	7287.97
(b) Deferred tax liabilities (net)	5452.39	4946.76
(c) Other long-term liabilities	159.55	799.50
(d) Long-term provisions		
<b>Sub-total - Non-current liabilities</b>	<b>10385.49</b>	<b>13034.23</b>
<b>4 Current liabilities</b>		
(a) Short-term borrowings	10690.48	13555.34
(b) Trade payables	3942.24	4419.18
(c) Other current liabilities	3573.42	3761.30
(d) Short-term provisions	2551.52	1785.03
<b>Sub-total - Current liabilities</b>	<b>20757.66</b>	<b>23520.85</b>
<b>TOTAL - EQUITY AND LIABILITIES</b>	<b>57378.60</b>	<b>60327.64</b>
<b>B ASSETS</b>		
<b>1 Non-current assets</b>		
(a) Fixed assets	31267.31	32107.78
(b) Capital work in progress	729.27	315.47
(c) Non-current investments	71.28	71.28
(d) Deferred tax assets (net)	0.00	0.00
(e) Long-term loans and advances	73.86	73.68
(f) Other non-current assets	225.11	220.63
<b>Sub-total - Non-current assets</b>	<b>32366.83</b>	<b>32788.84</b>



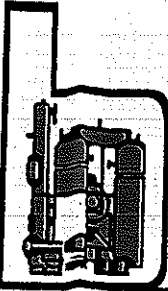
5 of 6 pages

Regd. Office: "Balaji Towers", No. 9/A/1, Hotgi Road, Aasara Chowk, Solapur - 413 003.

Fax : (0217) 2451521, Phones : (0217) 2451523, 2451524, E-mail : info@balajiamines.com

Unit II Works : Beside APSEB Sub Station II, IDA, Bollaram - 502 325, Jinnaram Mandal, Medak Dist. Telangana.

Phones : 08458-329660, Telefax : 08458-279240, E-mail : works2@balajiamines.com



TEL : +91-40-27898206 / 27892071  
FAX : +91-40-27816171  
E-MAIL : infohyd@balajiamines.com  
unit2mktg@balajiamines.com  
WEBSITE : www.balajiamines.com

# Balaji



CIN : L24132MH1988PLCO49387

## AMINES LTD.

Admn. Off :  
3rd FLOOR, K.P.R. HOUSE, S.P. ROAD,  
SECUNDERABAD - 500.003. (INDIA)

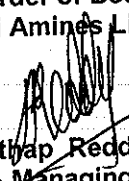
2 Current assets			
(a)	Current investments	2944.00	2944.00
(b)	Inventories	6936.24	8952.95
(c)	Trade receivables	10768.39	11498.11
(d)	Cash and cash equivalents	492.30	668.98
(e)	Short-term loans and advances	3870.84	3474.76
(f)	Other current assets	0.00	0.00
	<b>Sub-total - Current assets</b>	<b>25011.77</b>	<b>27538.80</b>
	<b>TOTAL - ASSETS</b>	<b>57378.60</b>	<b>60327.64</b>

- The above unaudited results have been reviewed by the audit committee and taken on record by the Board of Directors at their meeting held on 31.10.2015.
- The Limited Review by the Statutory Auditors for the Quarter and Half year ended 30<sup>th</sup> September 2015 as required under clause 41 of the Listing Agreement has been completed and the related Report is being forwarded to stock Exchanges. This report does not have any impact on the above Results and Notes which needs to be explained.
- Corresponding figures in previous year have been regrouped wherever considered necessary.
- Segment wise reporting as applicable under AS-17 for the Quarter and Half year ended 30<sup>th</sup> September 2015, given separately.

\*The Shares are pledged in favour of Banks to Secure various credit facilities to the company

Date: 31/10/2015  
Place : Secunderabad

By order of Board  
For Balaji Amines Limited

  
A Prathap Reddy  
Chairman & Managing Director

6 of 6 pages

Regd. Office "Balaji Towers", No. 9/1A/1, Hotgi Road, Aasara Chowk, Solapur - 413 003.

■ Fax : (0217) 2451521, Phones : (0217) 2451523, 2451524, E-mail : info@balajiamines.com

Unit II Works : Beside APSEB Sub Station II, IDA, Bollaram - 502 325, Jinnaram Mandal, Medak Dist. Telangana.

■ Phones : 08458-329660, Telefax : 08458-279240, E-mail : works2@balajiamines.com