

# RELIANCE

**Reliance Defence and Engineering Limited**  
(Formerly Pipavav Defence and Offshore Engineering Company Limited)  
Reliance Centre, Off Western Express Highway,  
Santa Cruz (East) Mumbai 400 055  
Tel: +91 22 3303 1000, Fax: +91 22 3303 3662  
www.reliancedefence.co  
CIN: L35110GJ1997PLC033193

January 18, 2017

**The General Manager**  
**Corporate Relationship Department**  
**BSE Limited,**  
Phiroze Jeejeeboy Towers  
Dalal Street,  
Mumbai- 400 001  
**BSE Scrip Code: 533107**

**The Manager**  
**National Stock Exchange of India Ltd**  
Exchange Plaza, 5<sup>th</sup> Floor,  
Plot No. C/1, G Block  
Bandra Kurla Complex, Bandra (E)  
Mumbai - 400 051  
**NSE Symbol: RDEL**

Dear Sirs,

**Sub: Delivery of a newbuilt Panamax Bulk Carrier**

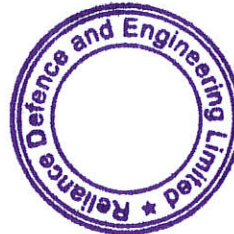
We enclose herewith a copy of the Media Release being issued by the Company on the subject matter.

Kindly bring the above to the notice of the members.

Yours faithfully,  
For Reliance Defence and Engineering Limited



**Ajit Dabholkar**  
**Corporate Counsel & Company Secretary**



Encl : 1 page



**Reliance Defence and Engineering Limited**  
(Formerly Pipavav Defence and Offshore Engineering  
Company Limited)  
Reliance Centre,  
Off Western Express Highway,  
Santa Cruz (East), Mumbai 400 055  
Tel: +91 22 33031000, Fax: +91 22 33033662  
www.reliancedefence.co  
CIN: L35110GJ1997PLC033193

## **MEDIA RELEASE**

### **RELIANCE DEFENCE AND ENGINEERING LTD (RDEL)**

**DELIVERED A NEWBUILT PANAMAX BULK CARRIER TO ONE OF THE LARGEST  
INTERNATIONAL SHIPPING COMPANY**

**SEVENTH PANAMAX VESSELS WITH ICE - CLASS TECHNOLOGY MEETING THE  
LATEST ENVIRONMENTAL NORMS.**

**ONE OF THE LARGEST DRY BULK CARRIER OF ITS CLASS BUILT IN INDIA**

**RELIANCE SHIPYARD THE ONLY INDIAN PRIVATE SECTOR SHIPYARD  
TO DELIVER A PANAMAX CLASS VESSEL TILL DATE.**

**Mumbai, January 18, 2017:** Reliance Defence and Engineering Limited has successfully delivered yet another 74,500 DWT new-built Ice-class Panamax Bulk Carrier viz. 'Sea Amber' on January 17, 2017 to an international customer.

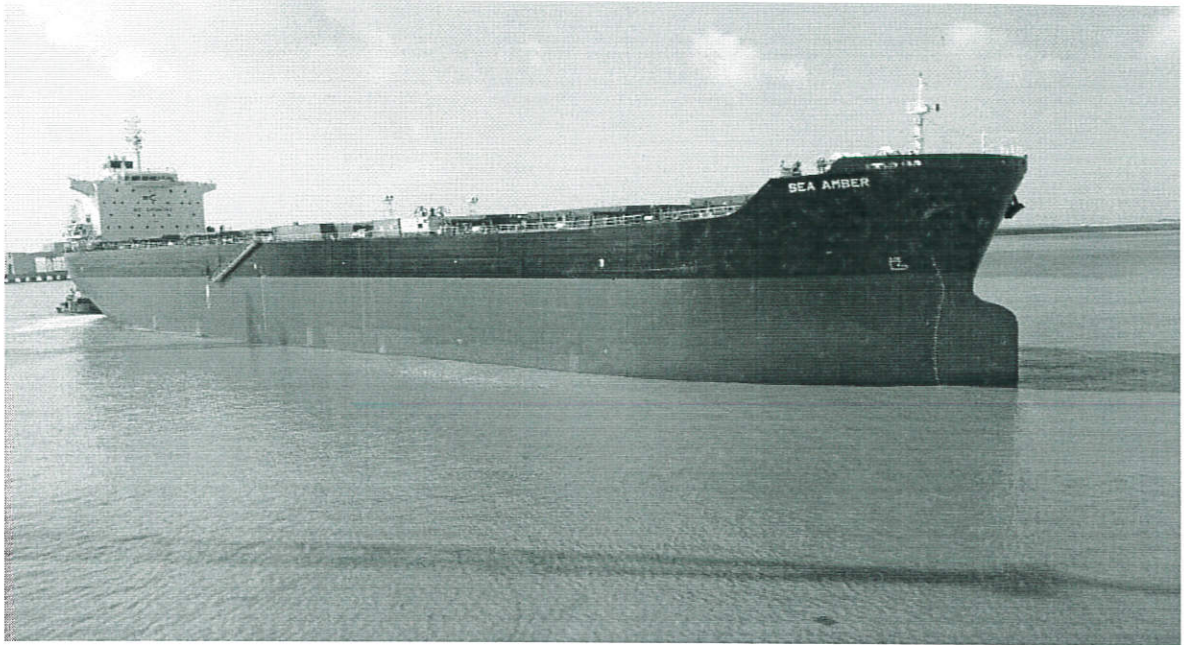
Reliance Shipyard has delivered till date seven similar size, Ice-class Panamax Vessels to its international customers. The Ship has been built as per one of the best-in-class international standards meeting the toughest environmental emission norms as well as fuel economy (EEDI standard).

These are the largest dry bulk carriers of its class ever built in India. RDEL is the only Indian Shipyard to achieve this landmark.

Reliance Shipyard with the largest dry-dock of the country has successfully mastered the block-construction technique through unique 'modular construction technology' for building large ships for both commercial usage and Navy. The Shipyard meets the latest "Performance Standards for Protective Coating (PSPC)" which ensures most advanced painting solution protecting the marine life while providing the enhanced life to the Ships.



# RELIANCE



## Dimension of the Vessel are as follows:

Length, overall	: 224.90 meters
Breadth, moulded	: 32.25 meters
Depth, moulded	: 19.70 meters

## Reliance Defence and Engineering Limited

Reliance Defence and Engineering Limited (RDEL) has the largest engineering infrastructure in India and is one of the largest in the world. The Company is the first private sector company in India to obtain the licence and contract to build warships. The facility houses the only modular shipbuilding facility with a capacity to build fully fabricated and outfitted blocks. The fabrication facility is spread over 2.1 million sq. ft. The shipyard has a pre-erection berth of 980 meters length and 40 meters width, and 2 Goliath cranes with combined lifting capacity of 1,200 tonnes, besides outfitting berth length of 780 meters.

## For further details, contact:

**Shri Daljeet S Singh**  
+91 9312014099  
Daljeet.S.Singh@relianceada.com

