

Baba Arts Ltd

532380

Company Profile

Baba Arts Limited formerly known as Galaxy Digi Systems Ltd is a company that is engaged in production, post-production and multimedia businesses. The company does post-production of TV serials, advertising films, animation films, music shows, and music videos. The expected Operating Cycle for production is in the range of 18 to 24 months. It also trades in the Intellectual Property Rights (IPR) of films and film production. Baba Arts became a public limited company in 1999, and has a studio in Mumbai to cater to the needs of the Indian television industry. Mr. Gordhan P Tanwani is the promoter of Baba Arts. The company's top management also includes Mr. Gordhan Tanwani as the Chairman of the Board, and Mr. Santosh A. Shah as a Non-Executive Independent Director. Mr. Shah has more than 25 years of experience in almost every facet of accounting profession. He has experience in the fields of statutory audit, internal audit, concurrent audit of various corporates, banks, financial institutions, PSU's and non-corporate entities.

Quarterly Results

	3-2013	6-2013	9-2013	12-2013	3-2014
Revenue	5.68	1.30	2.62	0.91	0.06
Other Income	0.11	0.06	0.07	0.03	0.13
Total Income	5.79	1.36	2.69	0.94	0.20
Expenditure	-4.76	-1.46	-2.59	-0.94	-0.37
Interest	-0.02	-0.03	-0.01	-0.02	-0.01
PBDT	1.01	-0.12	0.08	-0.03	-0.18
Depreciation	-0.07	-0.07	-0.08	-0.06	-0.07
PBT	0.95	-0.19	0.01	-0.09	-0.25
Tax	-0.27	-	-	-	-
Net Profit	0.59	-0.19	0.01	-0.09	-0.23
Equity	10.32	10.32	10.32	10.32	10.32
EPS	0.06	-0.02	-	-0.01	-0.02
CEPS	0.06	-0.01	0.01	-	-0.02
OPM (%)	18.19	-7.46	3.74	-0.55	-268.75
NPM (%)	10.44	-14.46	0.23	-10.23	-362.50

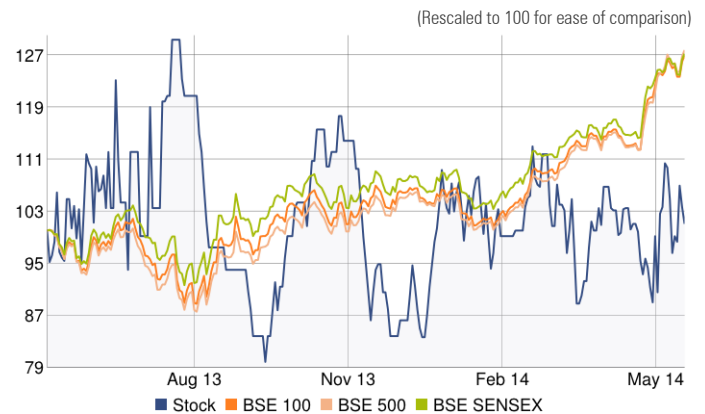
*Standalone figures

Sector Consumer Cyclical
Industry Media - Diversified

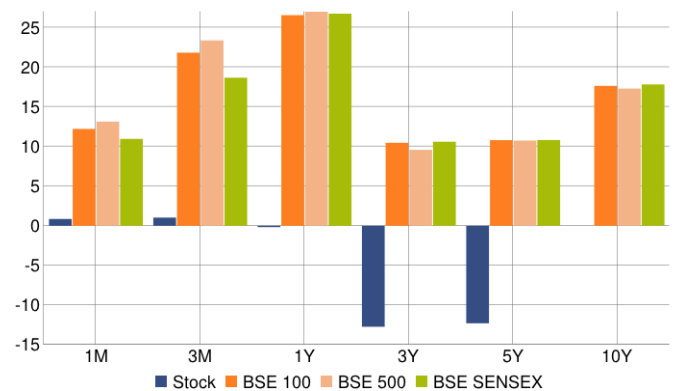
Stock Price

Price in Rs.

Last Close Price 5.86 (03/06/2014) 52 Wk High/Low 7.50/4.63
Market Cap (Cr.) 63.98 (30/05/2014) Avg. Volume 6356.86 (1 Mo)



Trailing Returns



Profitability

Values in Rs. Crores

	2009	2010	2011	2012	2013
Return on Assets %	0.10	0.09	0.05	0.04	0.02
Return on Equity %	0.14	0.20	0.12	0.07	0.02
Asset Turnover	2.70	2.82	1.30	0.60	0.23
Net Margin %	0.04	0.03	0.03	0.07	0.10
Financial Leverage%	1.45	2.75	2.46	1.09	1.05

Financial Health

Values in Rs. Crores

	2009	2010	2011	2012	2013
Long Term Debt	0.20	4.28	9.52	-	-
Total Equity	24.36	28.00	31.50	33.82	34.66
Debt/Equity	0.01	0.15	0.30	-	-
Working Capital	20.82	29.21	38.05	30.54	31.43