

User Manual for Market Watch

(Your desktop channel by BSE)

(Version 1.0.0.8)

Table of Contents

1.ABOUT MKT WATCH:	3
• WHAT IS MKT WATCH?	3
• DO I NEED TO BE A REGISTERED USER WITH BSEINDIA.COM TO USE MKT WATCH?	3
• DO I NEED TO BE CONNECTED TO THE INTERNET ALL THE TIME WHEN I AM USING MKT WATCH?	3
2.INSTALLING MKT WATCH:	4
• SYSTEM REQUIREMENTS:	4
• INSTALLATION STEPS:	4
• DESKTOP SHORTCUT AND SYSTEM TRAY ICON:	6
3.FUNCTIONALITIES:	7
• FEATURES:	7
SENSEX VIEW	7
Sensex Value:	7
NAVIGATION ICONS	8
a) My Scrips:	8
b) Graph:	9
c) Quote:	10
d) Shortcut:	10
e) Mkt Watch Shrink Arrow:	11
MARKET VIEW	12
a) Market Trend:	12
4.SUPPORT	13
• TECHNICAL:	13
• FUNCTIONAL:	14

1. About Mkt Watch:

- **What is Mkt Watch?**

Mkt Watch is a gadget, which gets BSE's data on your Desktop. It is a Free to use tool* and gives a good view of the market to the users.

- **Do I need to be a registered user with BSEIndia.com to use Mkt Watch?**

One need not be a registered user* with BSEIndia.com to use Mkt Watch. Mkt Watch can be downloaded from www.bseindia.com site and used.

- **Do I need to be connected to the Internet all the time when I am using Mkt Watch?**

Yes, one needs to be connected to Internet all the time to use the Mkt Watch.

(* indicates that the above mentioned are subject to changes by BSE Ltd.)

Download Mkt Watch

While downloading, in case you see an alert prompt on your browser, it is a normal alert by the Browser security feature. It is safe to continue. Click on 'save' to continue download.

2. Installing Mkt Watch:

- **System Requirements:**

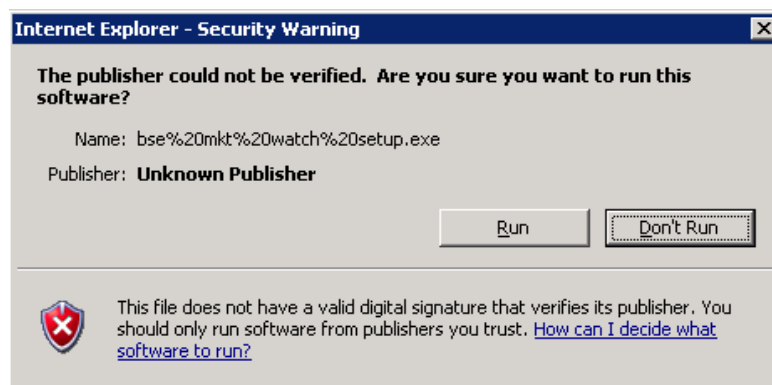
- Required OS: Windows 2000 or above
- Required Browser: Internet Explorer 5.0 or above, Netscape7.0, Mozilla
- Free Disk space: Minimum 10MB
- RAM: Minimum 64 MB

- **Installation Steps:**

Installation of Mkt Watch involves some basic steps. Details of each steps is given below:

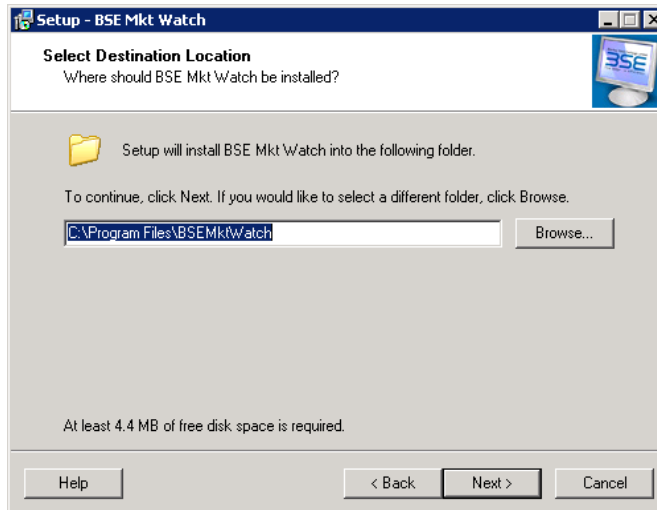
Double click on 'BSEMktWatchSetup.exe' from the folder where you have saved the Mkt Watch.exe

Some times when you start the installation, the security warning screen can appear as below. Just click on **Run** button to start Installation.



Your installation will start with a Welcome screen. Click on 'Next' to continue

- a. In the below screen of Select Destination Location, the application will be installed

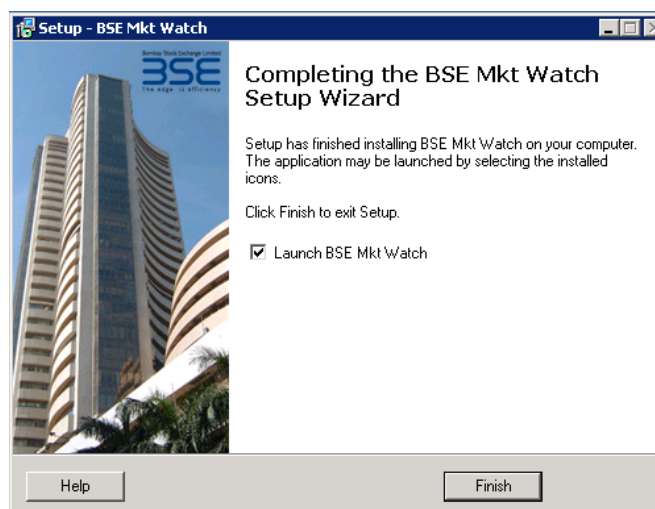


The destination location if required can be changed from the screen above or the default destination can be chosen.

Once the destination location is chosen, click on **Next** Button.

Please follow the Instruction as provided in subsequent screens and click on **Next** Button till you reach below final screen.

- b. Installation Completed:

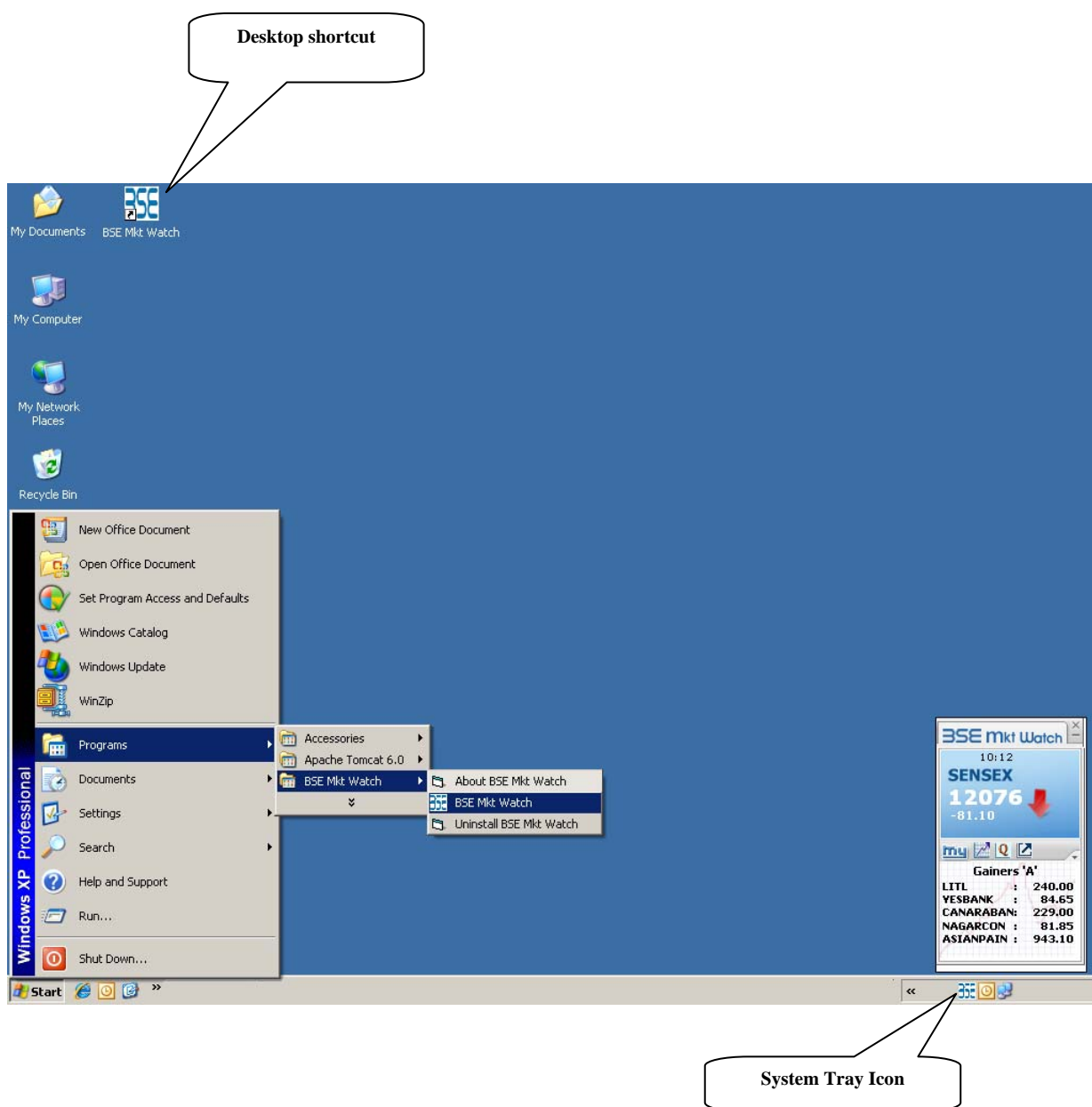


The installation at this stage is completed. You can now close the above window and launch the Mkt Watch.

- **Desktop Shortcut and System Tray Icon:**

On successful installation of the gadget a **desktop shortcut** is automatically created. One can directly start the gadget by clicking on this Shortcut.

Once the gadget is started an **icon appears in the system tray**. Features of Mkt Watch are explained in the next section.



3. Functionalities:

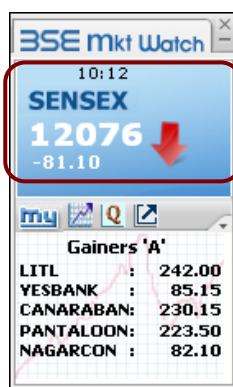
Using Mkt Watch is very simple as it involves minimum of our intervention. On start up (if connected to the Internet) the gadget automatically starts getting data. Following is the information that can be viewed on it.

- **Features:**

SENSEX VIEW

Sensex Value:

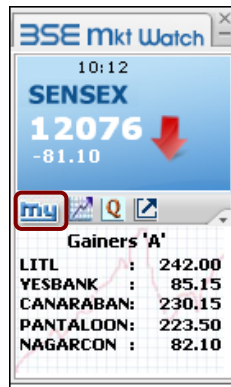
The SENSEX value along with the absolute change and the up/down arrow shows the movement of SENSEX. The background color of the SENSEX value indicates the change from the previous value and the arrow indicates change from the previous close.



NAVIGATION ICONS

a) My Scrips:

Personalize your BSE Mkt Watch by adding Scrips that you wish to track



To add Scrips in 'My Scrips' click on 'My' icon as shown above, a window as shown below will open.

Enter scrip name or scrip code for search.

My Scrips

Enter Scrip Name/ Scrip Code :

Scrip Code	Scrip Name	Scrip ID
530517	Relaxo Footwears Ltd	RELAXO
532124	Reliable Ventures India Ltd	RELIABVEN
500111	Reliance Capital Ltd	RELCAPITAL
503162	Reliance Chemotex Industries Ltd	RELCHEMQ
532712	Reliance Communications Ltd	RCOM
523445	Reliance Industrial Infrastructure Ltd	RIIL
500325	Reliance Industries Ltd	RIL
500390	Reliance Infrastructure Ltd	RELINFRA
532709	Reliance Natural Resources Ltd	RNRL
532743	Reliance Petroleum Ltd	RPL

My Scrips (6/6)

Scrip Code	Scrip Name	Scrip ID
500325	Reliance Industries Ltd	RIL
500500	Hindustan Motors Ltd	HINDMOTOR
503162	Reliance Chemotex Industries Ltd	RELCHEMQ
532124	Reliable Ventures India Ltd	RELIABVEN
500390	Reliance Infrastructure Ltd	RELINFRA
532709	Reliance Natural Resources Ltd	RNRL

Search Result will be displayed here

Your selected Scrip will be displayed here

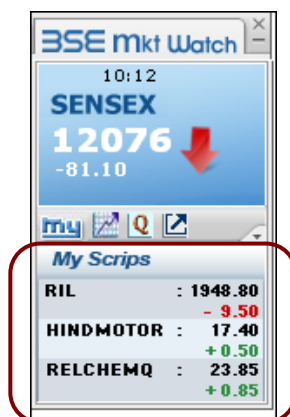
Adding a Scrip

After searching the scrip, select the scrip and click on add button. It will add the scrip in **My Scrip** section. You can add Maximum 6 Scrips.

Deleting a Scrip

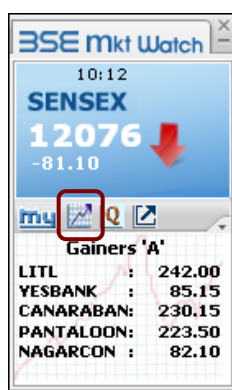
If you want to delete scrip, just select the scrip and click on the Delete button, it will delete the scrip from your **My Scrip**

After adding your favorite scrip you can view your scrip in the gadget.



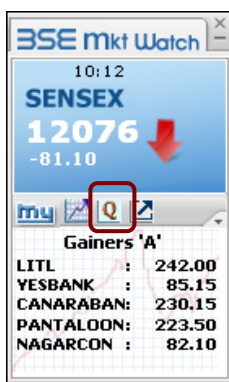
b) Graph:

Clicking on this icon will open the BSE SENSEX intraday graph.



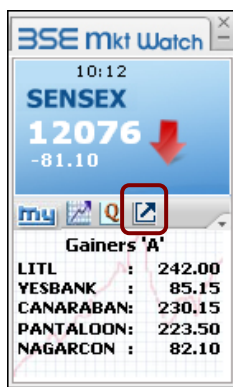
c) Quote: 

Click on this icon will open the get quote page through which live stock prices and other scrip related information are available.



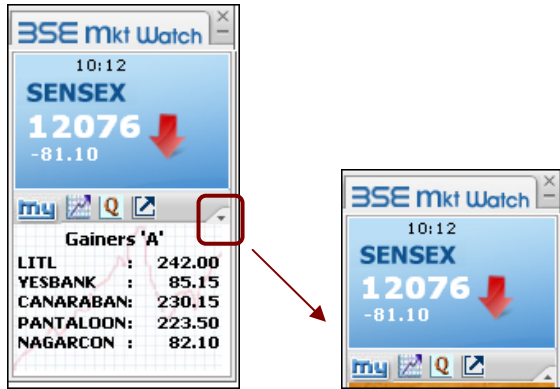
d) Shortcut: 

Right click anywhere on the Gadget or on the icon in system tray. Available are some of the exclusive reports and direct access to BSEindia site



e) Mkt Watch Shrink Arrow:

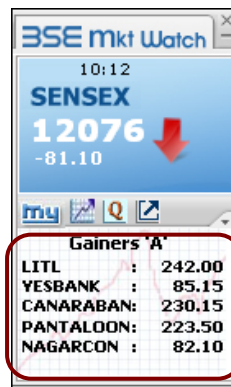
Clicking on this arrow will shrink and expand the Mkt Watch.



MARKET VIEW

a) Market Trend:

This area shows the market trend by listing the Gainers/Losers of A group and the Advances / Declines.

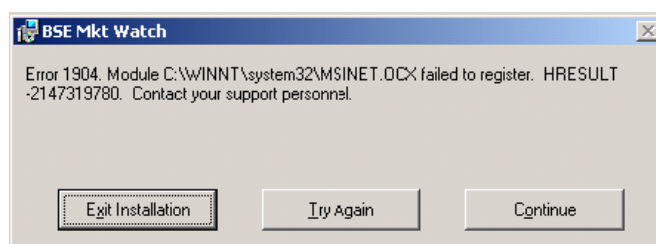


4. Support

- **Technical:**

While installing the Mkt watch in case you encounter certain problems, here is the guide to take you through:

Error Message:



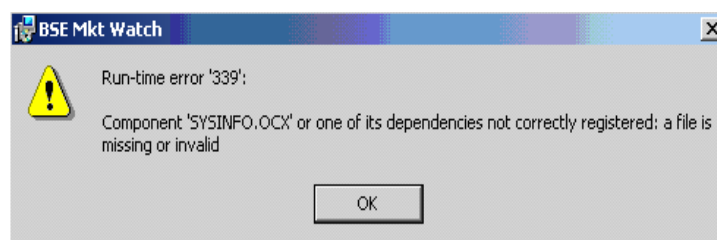
Reason:

- i. The above component may be in use currently. Click on 'continue' to complete the installation.

Solution:

- i. If problem persists, close all applications on your system and re-try.
- ii. Contact your System Administrator or Technical support for further help.

Error Message:



Reason:

- i. This tool needs installation privileges on 'System32' folder.

Solution:

- i. Contact your System Administrator or Technical support.

- **Functional:**

After the Installation some time your Mkt watch may look like as given below:



Reason:

- Your system monitoring is working on 120 DPI (Dot per Inch.) setting.

Solution:

- You have to change the setting to 96 DPI.
- Right click on desktop & click on properties.
- Click on the Settings Tab
- Go to the advance setting
- In the general tab, go to DPI Setting & change that setting to 96 DPI.

Understanding your problem will help us serve you better. Email us your problems/queries at info@bseindia.com

We thank you for choosing Mkt Watch for your desktop. It is and will remain our endeavor to enhance our user experience. We welcome [suggestions / feedback](#) from you.